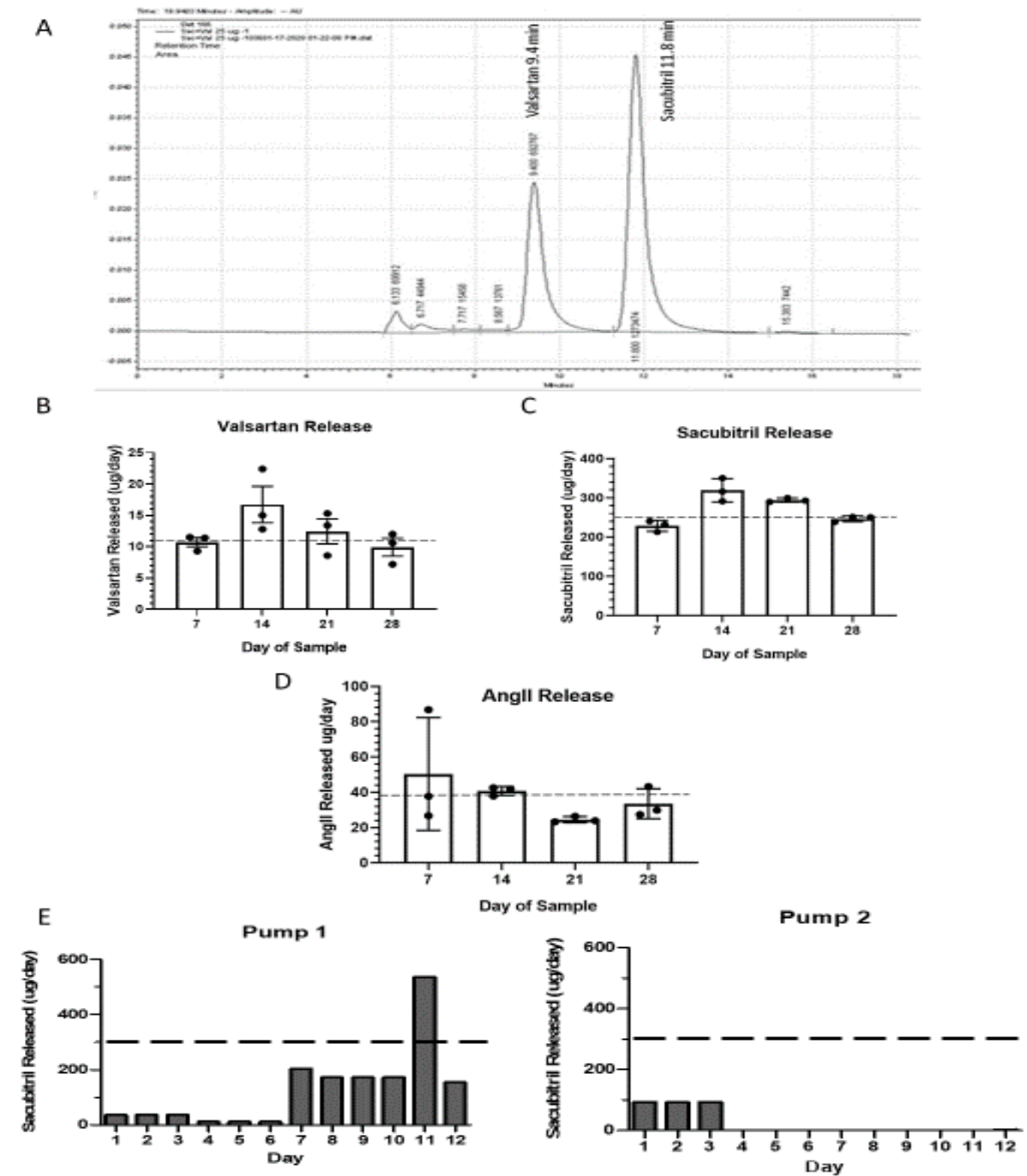


Supplemental Data

**Therapeutic assessment of combination therapy with a neprilysin inhibitor and
angiotensin type 1 receptor antagonist on angiotensin II-induced atherosclerosis,
abdominal aortic aneurysms, and hypertension**

Yasir AlSiraj*, Sean E. Thatcher*, Ching Ling Liang, Heba Ali, Mark Ensor, Lisa A.

Cassis



Supplemental Figure 1. Characterization of release of valsartan and/or sacubitril in the presence of AngII within osmotic minipumps. A, HPLC chromatogram of sacubitril and valsartan. B, Release rates of valsartan, sacubitril or AngII from osmotic minipumps over a 21 day period. Horizontal dotted lines represent anticipated release rates of each compound. C, Release rates of sacubitril (15 mg/kg/day) from two individual pumps. Horizontal dotted lines represent anticipated sacubitril release rates at the calculated dose. Data are mean \pm SD with dots representing individual pump release rates.