

**JPET/2020/266163 - Version 3**

**Neuroimmune mechanisms and sex/gender-dependent effects in the  
pathophysiology of mental disorders**

Alexandros G. Kokkosis and Stella E. Tsirka

Department of Pharmacological Sciences, Stony Brook University, Stony Brook, New York

Correspondence should be addressed to S.E. Tsirka (styliani-anna.tsirka@stonybrook.edu)

**JPET/2020/266163 - Version 3**

## **Neuroimmune mechanisms and sex effects in mental disorders**

Styliani-Anna (Stella) E. Tsirka,

Department of Pharmacological Sciences BST8, Rm 192

Stony Brook University

Stony Brook, NY 11794-8651

Tel: 631-444-3859

Fax: 631-444-3218

Email: [styliani-anna.tsirka@stonybrook.edu](mailto:styliani-anna.tsirka@stonybrook.edu)

**Word count:**

**Abstract:** 176 words

**Significance Statement:** 43 words

**Introduction:** 310 words

## **Abstract**

Innate and adaptive immune mechanisms have emerged as critical regulators of CNS homeostasis and mental health. A plethora of immunological factors have been reported to interact with emotion- and behavior-related neuronal circuits, modulating susceptibility and resilience to mental disorders. However, it remains unclear whether immune dysregulation is a cardinal causal factor, or an outcome of the pathologies associated with mental disorders. Emerging variations in immune regulatory pathways based on sex differences provide an additional framework for discussion in these psychiatric disorders. In this review, we present the current literature pertaining to the effects that disrupted immune pathways have in mental disorder pathophysiology, including immune dysregulation in CNS and periphery, microglial activation, and disturbances of the blood-brain barrier. In addition, we present the suggested origins of such immune dysregulation, and discuss the gender and sex influence of the neuroimmune substrates which contribute to mental disorders. The findings challenge the conventional view of these disorders and open the window to a diverse spectrum of innovative therapeutic targets, which focus on the immune-specific pathophenotypes in neuronal circuits and behavior.

## **Significance Statement**

The involvement of gender-dependent inflammatory mechanisms on the development of mental pathologies is gaining momentum. This review addresses these novel factors and presents the accumulating evidence introducing microglia and proinflammatory elements as critical components and potential targets, for the treatment of mental disorders.

## List of Abbreviations

<b>ACC</b>	Anterior Cingulate Cortex	<b>EAAT</b>	Excitatory Amino-Acid Transporters
<b>ACTH</b>	Adrenocorticotrophic Hormone	<b>EEG</b>	Electroencephalogram
<b>AMPA</b>	$\alpha$ -amino-3-hydroxy-5-methyl-4-isoxazolepropionic acid	<b>GABA</b>	Gamma Aminobutyric Acid
<b>AMY</b>	Amygdala	<b>GAD</b>	Generalized Anxiety Disorder
<b>AVP</b>	Arginine Vasopressin	<b>GFAP</b>	Glial Fibrillary Acidic Protein
<b>BBB</b>	Blood-Brain Barrier	<b>GR</b>	Glucocorticoid Receptor
<b>BD</b>	Bipolar Disorder	<b>GWAS</b>	Genome-Wide Association Studies
<b>BDNF</b>	Brain-Derived Neurotrophic Factor	<b>HPA</b>	Hypothalamic–Pituitary–Adrenal
<b>BH4</b>	Tetrahydrobiopterin	<b>HPC</b>	Hippocampus
<b>BMI</b>	Body Mass Index	<b>HRV</b>	Heart Rate Variability
<b>Cg</b>	Cingulate Gyrus	<b>HSC</b>	Hematopoietic Stem Cell
<b>CMS</b>	Chronic Mild Stress	<b>HYPO</b>	Hypothalamus
<b>CNS</b>	Central Nervous System	<b>ICAM-1</b>	Intercellular Adhesion Molecule-1
<b>CR</b>	Complement Receptor	<b>IDO</b>	Indoleamine 2,3 Dioxygenase
<b>CRH</b>	Corticotropin Releasing Hormone	<b>IFN</b>	Interferon
<b>CRP</b>	C-Reactive Protein	<b>IL</b>	Interleukin
<b>CSF</b>	Cerebrospinal fluid	<b>KYN</b>	Kynurenine
<b>CSF-1</b>	Colony Stimulating Factor 1	<b>LPS</b>	Lipopolysaccharide
<b>CUS</b>	Chronic Unpredictable Stress	<b>MAPK</b>	Mitogen-Activated Protein Kinase
<b>DAMPs</b>	Damage-Associated Molecular Patterns	<b>MCP-1</b>	Monocyte Chemoattractant Protein-1
<b>DAT</b>	Dopamine Transporter	<b>MDD</b>	Major Depressive Disorder
<b>DMS-5</b>	Diagnostic and Statistical Manual of Mental Disorders fifth edition	<b>MFG</b>	Medial Frontal Gyrus
		<b>MHC</b>	Major Histocompatibility Complex
		<b>MIA</b>	Maternal Immune Activation
		<b>mPFC</b>	Medial Prefrontal Cortex

**JPET/2020/266163 - Version 3**

**MS** Multiple Sclerosis

**NF-κB** Nuclear Factor-κB

**NGF** Neurotrophic Growth Factor

**NMDA** N-methyl-D-aspartate

**NSAIDs** Non-Steroidal Anti-Inflammatory

Drugs

**OFC** Orbitofrontal Cortex

**PAMPs** Pathogen-Associated

Molecular Patterns

**PD** Panic Disorder

**Poly(I:C)** Polyinosinic:Polycytidylic Acid

**PPD** Peri-Partum Depression

**PRD** Phobia-Related Disorder

**PRR** Pattern Recognition Receptor

**PTSD** Post-Traumatic Stress Disorder

**QUIN** Quinolinic Acid

**RNS** Reactive Nitrogen Species

**ROS** Reactive Oxygen Species

**RSDS** Repeated Social Defeat Stress

**SCZ** Schizophrenia

**SERT** Serotonin Reuptake Transporters

**SSRIs** Selective Serotonin Reuptake

Inhibitors

**TGF-β** Transforming Growth Factor-β

**TLR** Toll-Like Receptor

**TNF-α** Tumor Necrosis Factor-α

**TSPO** Translocator Protein

**VCAM-1** Vascular Cell Adhesion Molecule-1

**WHO** World Health Organization

**YLDs** Years Lived with Disability

## **1. Introduction**

Psychiatric or mental disorders include several syndromes manifested through physiological, behavioral, emotional and cognitive symptoms. Over a billion people worldwide suffer from mental disorders, with Anxiety-Related Disorders, Major Depressive Disorder (MDD), Bipolar Disorder (BD), Post-Traumatic Stress Disorder (PTSD) and Schizophrenia (SCZ) accounting for more than 80% Disease et al. (2018). The World Health Organization (WHO) estimates that the global burden of mental disorders translates to ~32% of years lived with disability (YLDs) (Vigo et al., 2016), as the current pharmacotherapies prove ineffective for up to 50% of patients (Pfau et al., 2018). Insufficient understanding of underlying disease mechanisms as well as gender influence in disease manifestation are thought to cause the observed treatment resistance.

A growing body of evidence suggests that neuroimmunologic processes affect both neuronal integrity and neuropathology, revealing new targets for the development of effective therapeutics (Russo and Nestler, 2013; Miller et al., 2017; Pape et al., 2019). Multiple clinical studies have reported, through genome-wide association studies (GWAS) (Howard et al., 2019; Marques et al., 2019) and postmortem histopathological findings (Mechawar and Savitz, 2016), that many patients with mental disorders exhibit chronic inflammation and immune system dysregulation accompanied by increased peripheral and central nervous system (CNS) inflammatory markers (Sandiego et al., 2015; Goldsmith et al., 2016; Wohleb et al., 2016).

Here we provide an overview of the interplay between neuroinflammation and CNS homeostasis during neuropsychiatric dysfunctions. CNS neuroinflammation is predominantly initiated by the resident immune, macrophage-like cells, the microglia, along with brain macrophages and astrocytes (Prinz and Priller, 2014). We discuss upstream causes of immune dysregulation in mental disorders, focusing on recent insights, suggesting that inflammatory mechanisms are implicated in the mental disorder pathophysiology. We also summarize the sex and gender effects upon mental disorder prevalence and severity through the prism of neuroinflammatory mechanisms and suggest the necessity to take them into account in mental

disorder therapeutics.

## **2. Neuroimmune Interactions in Brain Homeostasis**

The CNS has been considered an ‘immune-privileged’ system guarded by the blood-brain barrier (BBB) (Forrester et al., 2018). Despite its protection, the brain exhibits significant immunological properties, and is in constant interaction with the peripheral immune system (Pape et al., 2019). The immune system along with neurons and glial cells orchestrate the cognitive, emotional and social properties in the healthy brain (Blank and Prinz, 2013). Significantly, although microglia account only for ~10% of the cells in CNS, they have emerged as crucial neuroinflammatory effectors of these functions (Tay et al., 2017a; Pape et al., 2019). They continuously survey their microenvironment with their short, fine and highly motile processes, regulating CNS homeostasis (surveillance state) (Davalos et al., 2005; Nimmerjahn et al., 2005) from development through adulthood (Blank and Prinz, 2013; Prinz and Priller, 2014; Forrester et al., 2018). In the healthy adult brain, homeostatic microglia phagocytose cellular debris (Fourgeaud et al., 2016), modulate myelin levels (Miron et al., 2013; Safaiyan et al., 2016; Hagemeyer et al., 2017), monitor neurogenesis (Sierra et al., 2010; Gemma and Bachstetter, 2013), release cell signaling factors (Parkhurst et al., 2013), and act as vital components of synapse formation, plasticity and function (Hanisch and Kettenmann, 2007; Wake et al., 2009; Tremblay et al., 2011; Bialas and Stevens, 2013). Acting as professional phagocytes of the CNS, microglia engulf axon parts, terminals and dendritic spines, thereby contributing to synaptic activity modulation in CNS areas implicated in behavioral experiences (such as learning/memory, fear-anxiety, anhedonia and social tasks), via a Transforming Growth Factor- $\beta$  (TGF $\beta$ )-dependent complement cascade (Paolicelli et al., 2011; Tremblay et al., 2011; Schafer et al., 2012; Miyamoto et al., 2016; Torres et al., 2016; Tay et al., 2017a). Their process motility can dramatically change in response to neuronal activity and neurotransmitter levels (Li et al., 2012; Abiega et al., 2016). Interestingly, a recent study demonstrated that microglia-mediated synaptic reorganization is

**JPET/2020/266163 - Version 3**

responsible for the dissociation of hippocampal engrams during adulthood and affects previously encoded memories (Wang et al., 2020).

Microglial activation drives the neuroinflammation evident in neurological (Ransohoff, 2016a) and neuropsychiatric diseases (Mondelli et al., 2017; Li and Barres, 2018). Microglia respond swiftly to a variety of environmental cues (e.g. immune challenges, injury, diseases) through various cell surface receptors, including toll-like (TLRs), phagocytic (CR3, CR4) and scavenger receptors (CD36, CD91). During this response they alter significantly their morphology, and release cytokines, chemokines, reactive oxygen/nitrogen species (ROS/RNS) and trophic factors. Previously, microglial activation was conceptually categorized into a bimodal scheme, based on the study of peripheral macrophages: resulting in either 'cytotoxic' effects on neurons and oligodendrocytes (M1 type), or 'protective' effects through phagocytic capacity and support of neurite outgrowth (M2 type) (Ransohoff, 2016b). More recently, however, microglial activation is considered multidimensional, with several activation stages and overlap in gene expression (Ransohoff, 2016b; Salter and Stevens, 2017; Li and Barres, 2018).

There are three other CNS macrophage types: perivascular, meningeal and choroid plexus macrophages, located at the interface between the circulation and the parenchyma (Prinz et al., 2017). Furthermore, circulating myeloid cells, such as monocytes, granulocytes and dendritic cells, reside in the CNS vasculature network (Li and Barres, 2018). In several diseases or injuries, monocytes may promptly infiltrate the brain parenchyma and differentiate into microglia-like cells to alleviate or exacerbate disease progression (Ginhoux et al., 2010; Prinz and Priller, 2014; Li and Barres, 2018).

Another piece of the neuroimmune crosstalk is regulated by astrocytes which express chemokine, cytokine and complement receptors, allowing them to interact with microglia and macrophages and get activated to serve several functions including neurotrophic support, synaptic homeostasis, mitigating oxidative stress, neuron–glia signaling and others (Sofroniew and Vinters, 2010; Khakh and Sofroniew, 2015; Liddelow and Barres, 2015). Acute astrocytic



activation may exert both reparative functions [e.g. through secretion of neurotrophic factors (BDNF, NGF) and glutamate clearance] or neurotoxic functions leading to neuronal loss and behavioral alterations (Sanacora and Banasr, 2013; Khakh and Sofroniew, 2015; Liddelow and Barres, 2015; Haroon et al., 2017). Astrocytes can also act as ‘gate-keepers’ through their BBB regulation, controlling trafficking of peripheral immune cells to the CNS (Abbott et al., 2006).

### **3. Involvement of immune dysregulation in mental disorders: an evolutionary perspective**

Recent, converging human and animal data show that stress-related neurocircuitry and immune system coevolved to act synergistically and shield organisms from environmental threats. During a stressful experience, a “fight or flight” reaction is usually observed involving activation of inflammatory pathways [e.g. nuclear factor- $\kappa$ B (NF- $\kappa$ B)], leading to significant increases in circulating levels of proinflammatory cytokines, such as interleukin-6 (IL-6) (Pace et al., 2006; Koo et al., 2010; Sasayama et al., 2013; Wohleb et al., 2016; Felger et al., 2018). These inflammatory responses do not target specific pathogens, but rather environmental stressors, commonly observed in acute inflammatory diseases and mental disorders (such as MDD, SCZ, BD) (Pace and Miller, 2009; Derry et al., 2013; Goldsmith et al., 2016).

From an evolutionary perspective, it is hypothesized that modern humans have hereditary genomic predisposition towards inflammation, as a defensive response to environmental dangers and threatening stimuli (psychosocial stressors). The behavioral responses, that now are adapted to mental disorders, may have been used to enhance survival and reproduction in highly pathogenic and threatening environments many years ago (the pathogen host hypothesis) (Miller and Raison, 2016). Consequently, mammals had to conserve energy for healing wounds and infections (social avoidance and anhedonia support this metabolic shunt), while maintaining hypervigilance against an attack from enemies (hyperalertness in stress and manic disorders) (Raison and Miller, 2013; Slavich and Irwin, 2014).

Equally important to the pathogen host hypothesis of mental disorders is our detachment from

### **JPET/2020/266163 - Version 3**

an array of microbes which were previously ubiquitous in our microbiota (skin, gut, oral and nasal) (Rook et al., 2015). Studies suggest that these microbes (commensals and symbiotes) have significantly contributed to the suppression of inflammatory responses through TGF- $\beta$  signaling (Raison et al., 2010b; Rook et al., 2015). In modern times, sanitized urban environments resulted in decreased exposure to microbes and their immunoregulatory input. In the absence of these inflammatory regulators, the increased current psychosocial challenges and stressors have elicited increased immune responses, accounting for the high comorbidity of mental and inflammatory disorders (Prinz and Priller, 2014; Mechawar and Savitz, 2016; Miller and Raison, 2016; Wohleb et al., 2016).

### **Causal factors of immune dysregulation in mental disorders**

Two broad etiologic factors have been recognized as causes of mental disorder pathology: genetic susceptibility and environmental factors (Smoller, 2016). The latter include chronic stress, traumatic life events (physical, emotional, sexual abuse, bullying), malnutrition, drug abuse, social isolation and prenatal environment (poor nutrition, exposure to drugs or toxins, and maternal infections or stress) (Wong and Licinio, 2001). Genetic sensitivity to environmental risks (Jaffee and Price, 2007; Belsky et al., 2009) can induce epigenetic changes at different levels, (e.g. neuroinflammatory, neurotransmitter, and brain connectivity), thus modifying the ability to adapt to subsequent stressors (Arango et al., 2018). Below, we discuss several causal factors of immune dysregulation affecting mental disorders.

#### ***Stress***

Stress is believed to trigger psychiatric symptoms through immune system overactivation and escalation of the risk of mental disorder occurrence (Bergink et al., 2014). The immune system swiftly responds to stress through hormones (cortisol, epinephrine and norepinephrine) and sympathetic nervous system (SNS). This can happen via the hypothalamic–pituitary–adrenal (HPA) axis activation (the cardinal stress-mediated neuroendocrine system as a result of

**JPET/2020/266163 - Version 3**

corticotropin releasing hormone (CRH) and arginine vasopressin (AVP) secretion, which stimulate the secretion of adrenocorticotrophic hormone (ACTH) (Faravelli et al., 2012). ACTH can then stimulate glucocorticoid release, specifically cortisol, from the adrenal cortex, mobilizing immune cell trafficking in the body (Dhabhar et al., 2012; Faravelli et al., 2012). This acute reaction can potentially cause chronic low-grade inflammatory responses characterized by intensified proinflammatory responses of Tumor Necrosis Factor- $\alpha$  (TNF- $\alpha$ ), IL-6 and Interferon- $\gamma$  (IFN- $\gamma$ ) (Glaser and Kiecolt-Glaser, 2005) (Figure 1).

Recurrent stress (chronic stress) affects the production, reactivity and circulation of immune cells promoting detrimental inflammatory responses (Trottier et al., 2008). Several animal studies have demonstrated that chronic stress can induce immune dysregulation via glucocorticoid receptor (GR) resistance and inhibition of the HPA axis feedback loop, leading to pro-inflammatory cytokine production and a concomitant suppression of anti-inflammatory cytokines and immunosuppressive pathways (Stark et al., 2001; Frank et al., 2007; Engler et al., 2008; Heidt et al., 2014b).

Early human studies in long-term social anxiety (bullying, social status changes or hierarchy) they reported higher rates of persistent anxiety, depression, low self-esteem and incidence of illness (Marmot and Feeney, 1997; Griffin et al., 2002; Stansfeld et al., 2003). Correspondingly, clinical studies have concluded that chronic or early-life stress can induce transcriptional changes that promote susceptibility to hyper-inflammatory responses leading to a “biological imprinting” (Pace et al., 2006; Miller et al., 2008; Danese et al., 2011). For instance, teenagers with a history of childhood adversity have high IL-6 levels correlating with subsequent development of depression (Miller and Cole, 2012). Peripheral C-Reactive protein (CRP) and proinflammatory cytokine levels were shown to predict future PTSD development after traumatic and acute stressful events (Pervanidou et al., 2007; Eraly et al., 2014). Similarly, a meta-analysis of clinical studies revealed an enhanced proinflammatory profile (CRP, IL-6 and TNF- $\alpha$ ) in adults with early-life childhood trauma and maltreatment (Baumeister et al., 2016). Changes in inflammatory gene

### JPET/2020/266163 - Version 3

expression mediated by epigenetic mechanisms (for example for *FKBP5*, a factor associated with glucocorticoid sensitivity and mental disorders), have been linked with childhood traumatic experiences and elevated inflammatory responses (Jones, 2013; Klengel et al., 2013).

In the CNS, preclinical data have indicated that repeated psychosocial stress and early-life traumatic events can induce microglial activation [through stress hormones, cytokines, pattern recognition receptor (PRR) agonists and neurotransmitters], raising the risk of mental disorders later in life (Giovanoli et al., 2013; Howes and McCutcheon, 2017). In the hippocampus (HPC) and medial prefrontal cortex (mPFC), psychosocial stress increases the levels of extracellular ATP, which induces the NLRP3-dependent inflammasome, leading to microglial interleukin IL-1 $\beta$  release (Pantazatos et al., 2017). Likewise, toll-like receptors TLR-2 and TLR-4 can mediate repeated stress-induced gene expression and TNF- $\alpha$ /IL-1 $\alpha$  secretion from the mPFC microglia (Wohleb et al., 2012; Nie et al., 2018; Furuyashiki and Kitaoka, 2019). Finally, restraint stress induces neurotransmitter, such as glutamate and GABA, alterations which influence microglial activation, proliferation and motility (Nair and Bonneau, 2006; Fontainhas et al., 2011). Together these findings suggest causal relationships between psychosocial stressors and early life stress/trauma with immune dysregulation, inflammation, and development of mental disorders.

#### *Genetic factors*

Since genetics along with stress are the most important psychopathological contributors, the 'diathesis-stress' (diathesis being the genetic component) model constitutes the principal etiologic hypothesis for mental disorders (Smoller, 2016). Diathesis-stress suggests that genetic vulnerability and environmental stressors can escalate the predisposition to disorder, which in turn occurs once the threshold of sufficient liability is crossed. Previous studies using family members and twins revealed that mental disorders had heritable components to varying degrees. More recently molecular studies have started identifying specific genetic variations related with psychiatric disorder phenotypes.

### JPET/2020/266163 - Version 3

Significantly, genome studies have associated MDD with immune-related genes involved in the IL-6, interferon (IFN), and natural killer (NK) cell signaling pathways. Specifically, genes upregulated in MDD include TNF- $\alpha$  receptor (*TNFRSF10C*), MAPK14, IL-6 receptor, STAT3 (Wong et al., 2017) and several IFN-related genes (e.g., *MX1*, *OAS1*, *IFIT3*, *PTPN6*, *IRF7*) (Mostafavi et al., 2014). NK-related genes are downregulated (*GZMB*, *KLRK1*, *PRF1*, *SH2D1B*, *KLRD1*, *NFATC2*) (Jansen et al., 2016). The *TRPM2* gene (influences reactive oxygen species production and exacerbates NLRP3 inflammasome) was also significantly associated with MDD (Wong et al., 2017). Finally, a recent study points to a stress-related neuroinflammatory association with MDD, potentially via p75NTR/NGF (nerve growth factor) and innate immune TLR signaling (Chan et al., 2020). These results support and link the neurotrophic (Duman and Li, 2012) and neuroimmune hypotheses of depression (Hodes et al., 2015).

Schizophrenia (SCZ) typically emerges in early adulthood and is characterized by episodic or continuous alterations of the perception of reality, behavior and cognition (Foley et al., 2017). GWAS studies have identified promising target genes, widely involved in dopaminergic (*DRD2*) and glutamatergic neurotransmission (*GRM3*, *GRIN2A*, *SRR*, *CLCN3*, and *GRIA1*), in neuronal calcium signaling (e.g., *CACNB2*, *CACNA1I*, *CACNA1C*, *RIMS1*) and synaptic function (*PAK6*, *KCTD13*, *CNTN4*) (Foley et al., 2017). Significantly though, the top genetic correlations in schizophrenia come from the major histocompatibility complex (*MHC*) and B-cell activation loci (*CD19*, *CD20*), rendering immune pathways at the center of schizophrenia research (O'Dushlaine et al., 2015).

Bipolar Disorder (BD) is a manic-depressive disorder that causes sudden changes in mood, concentration, energy and activity levels, ranging from manic to depressive episodes. Several studies have associated BD within SNPs in genes encoding cytokines or immune function (*IFN- $\gamma$* , *IL-6*, *IL-1*, *TLR2*, *TLR4*, *PTGS2*, *CCL2*, *CCL3*) (Fries et al., 2019). A transcriptome-wide analysis included 1600 patients with SCZ and BD, and reported the upregulation of members of IFN and NF- $\kappa$ B pathways (Guan et al., 2019).

### JPET/2020/266163 - Version 3

Based on these studies, inflammatory, monoaminergic, and glutamatergic elements constitute the genetic “diathesis” and interact to coordinate the genetic predisposition of individuals to mental disorders.

#### *Pathogen-related inflammation and autoimmunity*

Chronic disturbances in the innate and adaptive immunity systems are likely to dysregulate CNS function and alter cognitive performance. Frequently, pathogenic infection of the CNS drives the adaptive systemic inflammation called “sickness behavior”, which is manifested as social withdrawal, depressed mood, anhedonia, irritability, fatigue, impaired concentration, muscle pain, and fever. The symptoms overlap significantly with those observed in several mental disorders and are considered the result of reallocating energy resources to combat infection and enhance host survival. Evidence from long-term studies has demonstrated that hospitalization due to infection increases the risk for major depression by 62% (Benros et al., 2011). In rodents perinatal infection and systemic inflammatory responses induce cognitive deficits, comparable to the psychosis observed in young adults after early infection (Khandaker et al., 2015). Similarly, *Streptococcus pyogenes* infection is frequently correlated with subsequent mental and autoimmune psychiatric disorders.

In a prospective study of severe infection (*Helicobacter pylori*, *Chlamydia pneumoniae*, CMV, HSV-1 and HSV-2), high viral burden was associated with cognitive decline (Katan et al., 2013). In addition, high CMV antibody titers have been identified in MDD subjects relative to controls (Rector et al., 2014), while infection with the protozoan *Toxoplasma gondii* has been associated with increased risk for SCZ (Torrey et al., 2007), MDD, manic and suicidal behavior (Dickerson et al., 2014; Sugden et al., 2016). Studies suggest that *T.gondii* encodes proteins homologous to neurotrophic factors and dopamine metabolism, possibly modulating dopaminergic neurotransmission (Carruthers and Suzuki, 2007), leading to activation of kynurenine (KYN) pathway metabolites in the brain (Notarangelo et al., 2014).

The mechanistic associations between inflammation and mental disorders remain incomplete though. Microglial inflammasome activation constitutes a potential response to proinflammatory mediators (Heneka et al., 2018; Zhang et al., 2018), thereby increasing the risk for mental disorders (Misiak et al., 2019). The systemic proinflammatory cytokine (such as TNF- $\alpha$ , IL-1 $\beta$ , IL-6) release in response to infection or injury can also affect the CNS through activation of cerebral endothelial cells and microglia (D'Mello and Swain, 2017). Cytokines can exert neurotoxic effects through reactive oxygen species (ROS) production and alterations of glutamatergic and monoamine transmission.

The equilibrium between CNS and the immune system resembles a double-edged sword: on one side are the positive effects of the evolutionarily-advantageous sickness behavior, while on the other side are the detrimental effects of chronic inflammation which lead to neurotoxicity, cognitive decline and mental dysfunction.

Such equilibrium imbalances are observed in autoimmune inflammatory responses and mental disorders. In fact, there is significantly higher comorbidity of autoimmune disorders with mental disorder patients than there is in general population (Vonk et al., 2007; Korczak et al., 2011; Kosmidis et al., 2012). At the same time, autoimmune diseases consist a high risk factor for subsequent diagnosis of mental disorder (45% increase) (Benros et al., 2013). A subset of mental disorder patients exhibit increased levels of circulating auto-antibodies: patients with MDD and BD may present comorbidity with autoimmune thyroiditis, evident by the presence of thyroperoxidase antibodies (Pop et al., 1998; Kupka et al., 2002); patients with MS may experience neuropsychological alterations and chronic anxiety, as in MDD (Feinstein et al., 2014) or SCZ (Andreassen et al., 2015).

Whether autoimmune antibodies consist causal factor or outcome of the psychopathological process of mental disorders, is still unknown. Nevertheless, there are cases of psychosis and depression reporting the presence of autoantibodies targeting neurotransmission in limbic encephalitis patients (Dalmau et al., 2011; Kayser et al., 2013). Therefore, it becomes gradually

recognized that a subset of mental disorder patients may in fact suffer from an autoimmune disease. Lennox et al., (Lennox et al., 2012; Dahm et al., 2014) wrote in an editorial: “Antibody screening in young people presenting with psychosis, seizures and cognitive disturbance is now part of routine clinical practice in neurological and intensive care settings”.

#### **4. Integrating neuroimmune systems in mental disorder pathogenesis**

##### **Neuroinflammatory Mechanisms in Anxiety and Depressive Disorders**

Anxiety and depressive disorders represent the leading class of mental disorders, with MDD affecting yearly 300 million people worldwide (Ferrari et al., 2013; Disease et al., 2018). They persist throughout life, and have high comorbidity with other disorders including PTSD, BD and SCZ (Conway et al., 2006; Hettema et al., 2011). Family and GWAS studies implicate genetic factors [~30% contribution (Otte et al., 2016)] in the etiology of the disorders (monoaminergic, glutamatergic, neurotrophic and stress hormone genes) (Smoller, 2016). However, exposure to chronic stress, traumatic experiences and environmental factors are the most essential contributors for the onset of these disorders (Abelson et al., 2007; Dieleman et al., 2015).

In anxiety and depressive disorders the fear-emotion processing network is stimulated in frontal (such as anterior cingulate cortex: ACC) and limbic areas (amygdala; AMY) (Gorman et al., 2000). Enhanced AMY-ACC connectivity has been correlated with augmentation of threatening stimuli in anxiety disorders, MDD and PTSD (Killgore et al., 2014; Fonzo et al., 2015), and is accompanied by increased IL-6 levels (Muscatell et al., 2015). These increases are linked to social withdrawal, cognitive disturbances, depression (Harrison et al., 2009; Muscatell et al., 2015) and lower serotonin status (Hornboll et al., 2018). Exposure to stressful and traumatic events induce the HPA axis and cortisol release to counteract, via NF $\kappa$ B inhibition, the norepinephrine-induced immune system activation and proinflammatory responses (Figure 1). This balance is dysregulated during chronic activation of the HPA axis, leading to negative feedback and GR resistance.



### JPET/2020/266163 - Version 3

In anxiety disorders, studies have demonstrated that Generalized Anxiety Disorder (GAD), Panic Disorder (PD) and phobic patients have significantly increased cortisol levels (Mantella et al., 2008; Staufenbiel et al., 2013) and subsequent upsurges of sympathetic tone (Blechert et al., 2007; Alvares et al., 2013), leading to immune activation and inflammation. Anxiety disorder patients (children and adults) exhibit elevated proinflammatory (CRP, TNF- $\alpha$ , IL-1 $\beta$  and IL-6) and reduced anti-inflammatory (IL-2, IL-4) responses, when compared to healthy controls (Brambilla et al., 1999; Hoge et al., 2009; Copeland et al., 2012; Vogelzangs et al., 2013; Wagner et al., 2015), as well as increased and highly sensitized lymphocytic T-cell populations (Th17) (Boscarino and Chang, 1999; Vieira et al., 2010). However, some other reports have described small or no changes in proinflammatory responses (Brambilla et al., 1999; Vogelzangs et al., 2013; Wagner et al., 2015). These discrepancies could be attributed to: i) the wide phenotypic and etiologic spectrum of anxiety disorders, ii) notions that only severe anxiety cases manifest increased inflammatory responses iii) gender and iv) comorbid mental or physical health problems.

In depressive disorders, early hypotheses had proposed that pathology stems from monoaminergic (Heninger et al., 1996) and glutamatergic alterations in the CNS (Kendell et al., 2005; Northoff and Sibille, 2014). However, approximately 40-50% of MDD patients are not responsive to antidepressants (Krishnan and Nestler, 2008), potentially reflecting that other disease mechanisms may be at play. The initial association between inflammation and depression was formed after the development of depression symptoms following long-term IFN- $\alpha$  treatment in patients with hepatitis C (Renault et al., 1987; Conversano et al., 2015). In a subsequent study that was investigating the association of peripheral immune system and depression, Maes et al. identified elevated numbers of Ly6C<sup>hi</sup> monocytes and neutrophils in the blood of MDD patients (Maes et al., 1992), proposing the inflammatory hypothesis of depression (Smith, 1991; Maes, 1995).

Since then, a plethora of studies have reported high levels of proinflammatory markers (CRP,

TNF- $\alpha$ , IL-6, IL-1 $\beta$ ) in depression patients (Maes et al., 1997; Miller et al., 2009; Dowlati et al., 2010; Khandaker et al., 2014; Mostafavi et al., 2014; Miller and Raison, 2016; Felger et al., 2018) (Howren et al., 2009; Mostafavi et al., 2014; Strawbridge et al., 2015; Goldsmith et al., 2016; Felger et al., 2018). Epidemiological studies (Whitehall II) on large community samples (>3,000 individuals) and a decade of follow up demonstrated that elevated blood levels of IL-6 and CRP could be used as prognostic markers of depressive symptoms (Gimeno et al., 2009). In support of that, elevated cortisol levels, GR insensitivity and dysregulation of the hypothalamic–pituitary–adrenal (HPA) axis have been consistently correlated with the inflammatory manifestations during MDD (Turecki and Meaney, 2016). In a recent single-nucleus RNA sequencing study of PFC in MDD patients, co-chaperones of GRs (HSP90 and FKBP5) were downregulated (Nagy et al., 2020), while in a systematic meta-analysis it was demonstrated that increased inflammation (TNF- $\alpha$ , IL-6) is correlated with glucocorticoid resistance, and elevated levels of cortisol in MDD patients (Perrin et al., 2019).

Respective increases of innate immune markers (TNF- $\alpha$ , IL-1 $\beta$ , IL-6, TLR3, TLR4) (Miller et al., 2009; Miller and Raison, 2016), along with microglial and astrocytic activation in several brain areas (PFC, HPC, ACC), have been reported in post-mortem MDD brain samples (Steiner et al., 2008b; Rao et al., 2010; Torres-Platas et al., 2014; Nagy et al., 2015). Microarray analyses of MDD individuals identified significant upregulation of immune transcripts (cytokines, complement) (Shelton et al., 2011; Kim et al., 2016). Neuroinflammation in MDD patients has also been visualized by positron emission tomography (PET) using the translocator protein (TSPO; microgliosis and astrogliosis marker) (Setiawan et al., 2015b).

In animal studies, exposure to psychosocial / environmental stressors (stress section) has similarly revealed high cortisol and ACTH levels in plasma, elevated hypothalamic (HYPO) CRH expression, and concomitant increases of proinflammatory plasma cytokines (Engler et al., 2005; Ramirez et al., 2016). Chronic stress can induce neuronal activation in the anxiety/threat appraisal areas (PFC, AMY and HPC), through glutamatergic and norepinephrine signaling (Perrotti et al.,

2004; Musazzi et al., 2015), leading to neuroendocrine stimulation and GC release (Ulrich-Lai and Herman, 2009). In a mouse depression model [repeated social defeat stress (RSDS)] innate immune GR resistance was correlated with high cortisol levels (Avitsur et al., 2002), increased IL-6 plasma levels (Janssen et al., 2010), and these effects were IL-1 $\beta$  or adrenergic signaling dependent (Jankord et al., 2010). Accordingly, chronic stress-induced activation of  $\beta$ 3 adrenergic receptor and downregulation of chemokine ligand-12 (CXCL12) have been shown to induce increases in hematopoietic stem cell (HSC) activity and peripheral elevation of monocytes and neutrophils (Engler et al., 2004; Wohleb et al., 2013; Heidt et al., 2014a).

#### *Microglial interplay in anxiety and depressive disorders*

Microglia and macrophages are believed to have a pivotal role in depressive-like behavior (Wohleb et al., 2014b; Wohleb et al., 2014c; Reader et al., 2015; Ramirez et al., 2016; Ramirez et al., 2017; Stein et al., 2017; Bollinger and Wohleb, 2019). Early work has demonstrated that in chronic stress models,  $\beta$ -adrenergic receptor signaling can induce microglial hypertrophy, pro-inflammatory cell activation (CD14, CD86, and TLR4) and cytokine expression (IL-6, IL-1 $\beta$ , TNF- $\alpha$  and IL-1 $\beta$ ) leading to depressive phenotype (Johnson et al., 2005; Blandino et al., 2006; Wohleb et al., 2011). These microglial-mediated effects are reduced by: i) GC receptor antagonist RU486 (Wohleb et al., 2018; Horchar and Wohleb, 2019), ii) propranolol administration ( $\beta$ -adrenergic receptor antagonist), or iii) by knocking out IL-1R in mice (Wohleb et al., 2011). These results suggest that chronic stress-induced inhibition of HPA axis may readily engage microglia, propagate inflammatory responses driving associated behavioral consequences (Figure 1).

Contributors to the chronic stress-signal propagation are the PRR family of TLRs, associated with increased release of damage-associated molecular patterns (DAMPs), which in turn promote NLRP3 inflammasome activation, TSPO increase (Wang et al., 2018), and IL-1 $\beta$  release (Pan et al., 2014; Fleshner et al., 2017). Recently, a study by Nie et al. (Nie et al., 2018), reported that RSDS can activate microglia through TLR2 and TLR4, increased IL-1 $\alpha$  and TNF- $\alpha$  expression,

### JPET/2020/266163 - Version 3

leading to atrophy of mPFC neurons and social avoidance (Nie et al., 2018). The use of double knockout mouse model (TLR-Double KO) or neutralizing antibodies for the cytokines rescued those effects, highlighting the pivotal role of TLRs on microglial activation during chronic stress.

Associated with microglial activation and concomitant inflammatory responses are activation markers (CD68), specific morphological features (e.g., branch length and number, soma volume), phagocytic activity and oxidative stress. Interestingly, RSDS studies have demonstrated that microglial activation (CD68), ROS production, and phagocytic activity (*ex vivo*) are upregulated in groups susceptible to stress, suggesting microglia-mediated neuronal dysfunction (Lehmann et al., 2016; Lehmann et al., 2018; Nie et al., 2018; Lehmann et al., 2019). Several studies have also attempted to visualize stress-induced morphological changes in microglia, but the results are mixed (Wohleb et al., 2011; Hinwood et al., 2012; Wohleb et al., 2012; Walker et al., 2013; Wohleb et al., 2013; Wohleb et al., 2014a; Lehmann et al., 2016; McKim et al., 2016). Possible reasons for these discrepancies in the literature might be the differences in the stress paradigms [the nature and intensity of stressor (acute or chronic)] as well as lack of sensitivity and inconsistencies in the quantification of microglial morphology.

To examine the role of microglia in the onset of depression, some studies utilized an *a priori* microglial ablation (~95%) by the CSF1R antagonist PLX5622 (PLX) (McKim et al., 2018; Weber et al., 2018; Lehmann et al., 2019). Ablation before RSDS resulted in resilience to chronic stress, reductions of reactive oxygen (ROS) formation, monocyte recruitment, pro-inflammatory cytokines and depression-related behavioral tests (McKim et al., 2018; Weber et al., 2018; Lehmann et al., 2019). Remarkably, repopulation of microglia after PLX withdrawal [clonal expansion of microglia (Tay et al., 2017b)] was sufficient to reinitiate this cascade of events and recapitulate the depression-like effects in mice. These results, however, unveil more questions regarding the role of microglia during depression: i) could chronic stress potentially induce microglial epigenetic changes at depression onset? ii) is the neuronal sensitization (adverse activated areas) also contributing to a microglial “re-education” after repopulation? iii) what are

the significance and microglial phenotype of the relatively uncharacterized resilient to stress animals? and iv) what is the contribution of peripheral leukocytes in these processes?

Regarding the latter, bone marrow–derived leukocytes can enter the brain through the BBB epithelial lining and contribute to depression pathophysiology (Banks et al., 1994; Banks et al., 1995), a finding both in postmortem studies in MDD patients (Torres-Platas et al., 2014), and in RSDS animals (CNS infiltration and differentiation of proinflammatory Ly6C<sup>hi</sup> monocytes to macrophages) (Varvel et al., 2012; Wohleb et al., 2013) (Figure 1). A recent study exhibited that this recruitment can be mediated by neurovascular adhesion of IL-1 $\beta$ -producing monocytes (VCAM-1 and ICAM-1) to the CNS parenchyma (McKim et al., 2018). This finding is of particular interest, considering that chronic stress may disrupt BBB integrity through alterations in the tight junction protein Cldn5 (Reader et al., 2015; Menard et al., 2017; Lehmann et al., 2018; Dudek et al., 2020). Interestingly, microglial activation and extracellular matrix degradation are believed to significantly contribute to BBB leakiness (Lehmann et al., 2016; Lehmann et al., 2018).

However, immune activation is not consistently reported in all depression cases (Lamers et al., 2013; Gold, 2015). For instance, a recent study by Punder et al. demonstrated that only the MDD patients with history of childhood adversity exhibited heightened inflammation (de Punder et al., 2018), while microglial activation in post-mortem studies is detectable in MDD patients that committed suicide (Steiner et al., 2008a; Steiner et al., 2011; Schnieder et al., 2014). These observations, suggest that immune activation may manifest only in moderate to severe depressive cases, accounting also for the treatment resistance reported in them (Figure 2).

## **Neuroinflammatory Highlights in Traumatic, Bipolar and Schizophrenia Disorders**

### *Post-Traumatic Stress Disorder*

PTSD is a severe and heterogeneous psychiatric condition, which develops in individuals who have experienced traumatic or dangerous events (i.e. threat of death, injury, sexual violence), and is characterized by significant comorbidities with MDD and PD (Dedert et al., 2010; Norrholm

### JPET/2020/266163 - Version 3

et al., 2011). Innate immune response genes and anxiety/stress vulnerability genes are thought to contribute to PTSD heritability (Hauger et al., 2012; Skelton et al., 2012; Smoller, 2016), while exposure to trauma is a risk factor for dysregulated HPA axis function (elevated CRH levels) (Carpenter et al., 2004; Lee et al., 2005; Michopoulos et al., 2017) and inflammation (Michopoulos et al., 2015a). In fact, individuals exposed to childhood abuse, maltreatment, socio-economic difficulties or parental separation may exhibit increased proinflammatory activity during adulthood (Taylor et al., 2006; Hartwell et al., 2013; Lacey et al., 2013; McDade et al., 2013; Matthews et al., 2014; Tursich et al., 2014; Baumeister et al., 2016; Lin et al., 2016; Michopoulos et al., 2017). Studies have reported in PTSD patients elevated circulating concentrations of TNF- $\alpha$ , INF- $\gamma$ , IL-1 $\beta$ , IL-2, IL-6 and ICAM-1, which correlated positively with PTSD symptoms (von Kanel et al., 2007; Hoge et al., 2009; Oganessian et al., 2009; Vidovic et al., 2011; Guo et al., 2012; Plantinga et al., 2013; Newton et al., 2014; Bersani et al., 2016). Respectively, CSF levels of CRP and IL-6 have been found elevated in PTSD (Baker et al., 2001; Heath et al., 2013; Plantinga et al., 2013; Lindqvist et al., 2014; Bersani et al., 2016), constituting risk factors for diagnosis (Michopoulos et al., 2015b). However, there are also studies that have described no change or even decreased levels of CRP, IL-6 and IL-2 in individuals with PTSD (Song et al., 2007; McCanlies et al., 2011; Muhtz et al., 2011). Similar discrepancies have been reported in studies examining anti-inflammatory plasma cytokine levels in PTSD patients (IL-4, IL-8 and IL-10) (von Kanel et al., 2007; Hoge et al., 2009; Smith et al., 2011; Guo et al., 2012; Lindqvist et al., 2014; Jergovic et al., 2015; de Oliveira et al., 2018).

A meta-analysis of 20 PTSD independent studies sought to address these inconsistencies, revealing that pro-inflammatory markers (IL-1 $\beta$ , IL-6, TNF- $\alpha$ , and IFN- $\gamma$ ) are elevated and positively correlated with the illness duration in PTSD patients (Passos et al., 2015). Another recent correlational study in traumatized women reported significant associations between higher concentrations of CRP, disease severity and PTSD symptoms (Powers et al., 2019).

To summarize, these findings suggest that pharmaceutical interventions targeting

### **JPET/2020/266163 - Version 3**

inflammatory responses, could potentially supplement the traditional psychotropic medications for severe cases of PTSD.

#### *Bipolar Disorder*

Bipolar Disorder (BD) is a mental disorder characterized by frequent shifts in mood, activity levels and concentration, ranging from manic episodes to depressive states. Studies have reported immune dysregulation during acute manic or depressive episodes, which is characterized by increased plasma levels of pro-inflammatory cytokines (TNF- $\alpha$ , IL-1 $\beta$ , IL-2R, IL-6 and IL-10) (Hope et al., 2011; Soderlund et al., 2011; Cetin et al., 2012; Munkholm et al., 2013; Stertz et al., 2013; Muneer, 2016). Similarly, postmortem analyses in BD patients' frontal cortex have demonstrated elevated mRNA and protein levels of IL-1b, CD11b and iNOS (Rao et al., 2010).

Exacerbated inflammatory responses have been recorded by PET imaging, showing a significant increase of TSPO binding in the HPC of BD patients (Haarman et al., 2014). Interestingly, studies have found microglial and monocytic activation with subsequent serum BDNF losses during manic or depressive phases, suggesting synaptic alterations between episodes (Drexhage et al., 2011; Parkhurst et al., 2013).

At present, research regarding the crosstalk between inflammatory responses and cognitive performance in BD is extremely limited. The above studies, however, provide preliminary evidence of proinflammatory contributions on BD pathophysiology.

#### *Schizophrenia*

Schizophrenia (SCZ) is a chronic, heterogeneous and severe mental disorder affecting 1%–3% of the general population worldwide. It presents positive (hallucinations and movement disorders), negative (anhedonia, fatigue, asocial or atonic behavior) and cognitive symptoms (executive and memory functions) (van Os and Kapur, 2009). Epidemiological studies have

reported that prenatal maternal infection (influenza, *Toxoplasma gondii*, herpes simplex virus type 2 and cytomegalovirus) constitutes a risk factor for the offspring to develop SCZ during adulthood (Brown and Derkits, 2010; Khandaker et al., 2013; Canetta et al., 2014). This correlation between maternal infection and SCZ is also supported by rodent models of maternal immune activation with polyinosinic:polycytidylic acid [poly(I:C)] in mid-gestation (Hui et al., 2018), with the offspring displaying SCZ behavioral phenotypes (Meyer et al., 2009; Patterson, 2009; Giovanoli et al., 2013).

Equally important, SCZ pathophysiology has been associated with the genetic loci of MHCII (Shi et al., 2009; Stefansson et al., 2009), predominantly genes involving complement C4, suggesting microglial involvement (Sekar et al., 2016). High C4 expression has been detected in neuron and astrocyte subsets from SCZ patient postmortem samples (HPC and PFC), while C4 knockout mice display impaired synaptic refinement (Sekar et al., 2016). Significantly, PET studies reveal increased TSPO binding in the HPC and frontal cortex of SCZ patients (van Berckel et al., 2008; Doorduyn et al., 2009; Bloomfield et al., 2016; Marques et al., 2019), while the density of MHCII-positive amoeboid microglia is increased (Wierzbica-Bobrowicz et al., 2005; Busse et al., 2012; Fillman et al., 2013).

A meta-analysis of blood cytokine levels in SCZ patients revealed elevated expression of IFN- $\gamma$ , IL-6, IL-8, IL-1RA, IL-1 $\beta$ , IL-10 and TNF- $\alpha$  during psychotic episodes (Goldsmith et al., 2016), while a recent study of frontal cortex areas in SCZ patients, demonstrated elevated macrophage numbers and vascular adhesion molecules expression (ICAM-1, VCAM-1), further highlighting the presence of inflammation in SCZ (Cai et al., 2020).

### **Inflammatory effects on neurotransmitter metabolism**

There are several proposed inflammatory mechanisms by which monoamine (serotonin, dopamine) and glutamate neurotransmission may be affected:

#### *Monoamines*



Compelling evidence supports the idea that monoamine synaptic deficits result from excessive inflammatory cytokine levels in mental disorders. Many studies have focused on the impact of inflammatory cytokines on serotonin transporter (SERT) function, a primary target for anxiety- and depression-related disorders. In a lipopolysaccharide (LPS)-induced depressive-like model, interleukin-1 $\beta$  (IL-1 $\beta$ ) and tumor necrosis factor- $\alpha$  (TNF- $\alpha$ ) induction resulted in induction of SERT expression [through p38 mitogen-activated protein kinase (MAPK)] and diminished serotonin synaptic levels (Zhu et al., 2010). This has been replicated in human studies, correlating blood TNF- $\alpha$  concentrations with increased SERT binding activity (Krishnadas et al., 2016), supporting the hypothesis that inflammation promotes resistance to selective serotonin reuptake inhibitors (SSRIs), as observed in mood and anxiety disorder patients (Strawbridge et al., 2015).

Cytokine-induced activation of the immunosuppressive enzyme indoleamine 2,3 dioxygenase (IDO) also significantly alters serotonin production. IDO activity can be induced by several inflammatory signaling mechanisms, such as NF- $\kappa$ B, and divert tryptophan metabolism from serotonin into KYN (Muller and Schwarz, 2007), which is metabolized to neurotoxic quinolinic acid (QUIN) by activated microglia and brain-infiltrating macrophages (Raison et al., 2010a). Studies on MDD patients demonstrated direct correlation of plasma inflammatory markers (e.g., TNF- $\alpha$ ) with plasma KYN and cerebrospinal fluid (CSF) KYN/tryptophan levels, exhibiting greater depression severity in those patients (Haroon et al., 2020).

Dopamine is a monoamine neurotransmitter with essential roles in the regulation of reward, motivation and psychomotor activity (Haber, 2014). Alterations in dopamine levels are responsible for some of the most characteristic symptoms of mental disorders: anhedonia, persistent fatigue, loss of interest and psychomotor deficits. Within weeks after administration of the cytokine IFN- $\alpha$ , patients experience symptoms (Capuron et al., 2002; Capuron and Miller, 2004) due to dopamine loss (Capuron et al., 2012). Similar results were reported in animal studies (Felger et al., 2007; Felger et al., 2013) where LPS or cytokine administration (IL-1 $\beta$  or IL-6) in mice resulted in loss of interest and reduction in reward sensitivity (Yohn et al., 2016; Bartlett et al., 2018). Another

essential cofactor in monoamine synthesis, tetrahydrobiopterin (BH<sub>4</sub>), decreases in response to inflammation-induced oxidative stress [ROS and reactive nitrogen species (RNS)], inducing anxiety and depressive symptoms (Neurauter et al., 2008; Haroon et al., 2012; Felger et al., 2013).

Despite the rich literature reporting dopamine level alterations in response to cytokine administration, little research has been conducted to associate inflammation with analogous dopamine responses in mental disorder patients. For instance, MDD and chronic fatigue syndrome patients with elevated inflammatory markers (such as CRP and cytokines) demonstrated aberrant connectivity within reward-related corticostriatal neurocircuitry (Miller et al., 2014; Felger et al., 2016).

Altogether, these data suggest that the current first-line treatment regimens which activate monoamine receptors, support dopamine synthesis and block dopamine reuptake would ultimately have greater likelihood of success and longer efficacy if they were to be combined with anti-inflammatory medications. In agreement with that, MDD patients with high inflammation exhibit greater responses to SSRIs used in combination with the DAT blocker bupropion than to SSRI monotherapy (Jha et al., 2017).

### *Glutamate*

Glutamatergic neurotransmission is another system through which cytokines influence reward, motor and threat-related circuitry (Tilleux and Hermans, 2007; Ida et al., 2008; Miller et al., 2009; Vezzani and Viviani, 2015; Birey et al., 2017; Murrough et al., 2017). Inflammatory cytokines at physiological levels can induce synaptogenesis by: i) inducing AMPA activity post-synaptically, ii) promoting glutamate clearance [through excitatory amino-acid transporters (EAAT)], iii) maintaining and protecting synapses by NMDARs stimulation through cytokine receptor activation (Santello et al., 2011; Pribiag and Stellwagen, 2014; Haroon et al., 2017).

During chronic inflammatory diseases, cytokine levels can dramatically increase, resulting to

persistent NF- $\kappa$ B activity and neurotoxicity (Santello and Volterra, 2012): TNF- $\alpha$  and IL-1 $\beta$  enhance risk for excitotoxicity by activating NMDAR signaling, (Vezzani and Viviani, 2015), or inhibiting EAATs (which clear glutamate) in HPC slices (Zou and Crews, 2005). Interestingly, use of NMDAR antagonists blocks the cytokine-potentiated glutamate neurotoxicity, signifying the role of NMDA signaling in inflammatory-mediated neurotoxicity, and mental disorders (Zou and Crews, 2005).

Inflammatory cytokines and related components have been shown to induce glutamate neurotoxicity through microglia and astrocytes (Tilleux and Hermans, 2007; Ida et al., 2008; Haroon et al., 2017). Importantly, upon cytokine stimulation and subsequent microglial activation, large quantities of glutamate can be synthesized and released into synapses (Takeuchi et al., 2006). In addition, glutamate can be directly trafficked from microglia into astrocytes (through gap junctions) leading to EAAT dysfunction (Takeuchi et al., 2008). This glial glutamate release can stimulate extrasynaptic neuronal NMDARs and lead to BDNF loss and excitotoxicity (Hardingham et al., 2002; Hardingham and Bading, 2010).

## **5. Sex and gender differences in immunoneuropsychiatry**

The definition and usage of the terms sex and gender in the literature of mental disorders have sometimes been elusive and difficult to define. The term “sex differences” describes the biological dissimilarities between male and female subjects, while the term “gender differences” describes the differential effects that psychosocial, cultural and environmental factors have on men and women (Muehlenhard and Peterson, 2011). As such, the term sex is used for the animal studies assessing sex hormone influences (progesterone, estrogen, estradiol) or genetics of mental disorders, and both the sex (biological) and gender (environment and experience) components are used in human cases (Oertelt-Prigione, 2012; Kuehner, 2017).

### **Justifying the gender gap in mental disorders**

**JPET/2020/266163 - Version 3**

Differences in the epidemiology and symptomatology of mental disorders in men and women are well-established, and with the exception of late onset schizophrenia, women have significantly higher chronic prevalence of anxiety, depressive and bipolar disorders (Boyd et al., 2015; Riecher-Rössler, 2017a; Riecher-Rössler, 2017b; Disease et al., 2018; Yu, 2018; Rehm and Shield, 2019). A compelling body of evidence suggests that women are more vulnerable to psychosocial environmental stressors (due to sex hormone influence and blunted HPA axis stress responses), leading to higher prevalence of mental disorders.

Sex hormones can regulate various brain neurotransmitter pathways (serotonergic, dopaminergic and GABAergic), modulating the sensitivity towards psychosocial influences. For instance, estradiol and progesterone fluctuations during menstrual cycle augment vulnerability of women towards psychosocial stressors, but also significantly promote the overactivation, consolidation and non-extinction of stressful experiences (Li and Graham, 2017). Stressful and emotion-negative stimuli (Kemp et al., 2004) induce greater activation of locus coeruleus (nucleus responding to stress and panic) in women compared to men (Filkowski et al., 2017; Bangasser et al., 2018).

Animal studies suggest that this difference in coping with anxiety and trauma stems from a sex-dependent HPA axis hypoactivation (Kajantie and Phillips, 2006). Specifically, low estradiol and progesterone levels (during menstruation, post-partum and post-menopausal periods) attenuate the SNS-adrenal and HPA axis responsiveness, leading to repressed stress-coping capability (Figure 1) (Kajantie and Phillips, 2006; Shansky et al., 2010). Studies demonstrate, however, that the decrease in cortisol release after stress exposure leads to lack of buffering mechanisms in emotional pathways (PFC-AMY) (Het et al., 2012; Kuehner, 2017). Most compelling evidence are the increased anxiety and depression prevalence post puberty/menarche (Kessler, 2003; Angold and Costello, 2006; Bale and Epperson, 2015), attributing these effects on ovarian hormonal level fluctuation (Costello et al., 2007). Similarly, atypical depression (a characteristic example of HPA hypoactivation, predominantly observed in

women) also presents this pathophenotype. (Albert, 2015; Kuehner, 2017). Estradiol fluctuations can also exert pronounced effects on fear/memory and emotional extinction in anxiety-related and PTSD pathophysiology (Li and Graham, 2017).

Environmental and psychosocial influence is equally responsible for the gender differences observed in mental disorders (Kuehner, 2017; Riecher-Rössler, 2017b). Notably, reports demonstrate that domestic violence, sexual abuse (Kuehner, 2017; Oram et al., 2017), discrimination and other risk factors can also contribute to the higher incidence of mental disorder in women (Hankin et al., 2007; Zahn-Waxler et al., 2008). As the prevalence of childhood sexual and emotional abuse is significantly higher in women than men, it constitutes an important contributor to gender differences in mental disorders (Kuehner, 2017).

### **Sex influence and inflammation in mental disorders**

Several physiologic systems (HPA axis, immune dysregulation, neuroplasticity) have been implicated to the etiopathogenesis of mental disorders, and sex differences (hormone regulation and genetics) significantly modulate these processes (Rubinow and Schmidt, 2019) (Figure 2). Importantly, sex hormones are key regulators of both innate and adaptive immune cell function (Rubinow and Schmidt, 2019; Slavich and Sacher, 2019), affecting immune cell progeny, proliferation and cytokine production (Oertelt-Prigione, 2012; Trigunaite et al., 2015).

#### *Anxiety and depressive disorders*

Epidemiological studies show robust gender-related differences in prevalence (2 to 3-fold higher in women), severity and comorbidity reported in anxiety, traumatic and depressive disorders (Li and Graham, 2017; Rehm and Shield, 2019). Sex hormonal fluctuations are associated with heightened inflammatory responses in women compared to men (Giletta et al., 2018). In a meta-analysis of 26 studies, women were more prone in developing MDD following IFN- $\alpha$  treatment (Udina et al., 2012). Similar sensitivity to inflammatory components (endotoxin

**JPET/2020/266163 - Version 3**

exposure) was observed in MDD women, more than men, despite the similar magnitude in cytokine responses (IL-6, TNF- $\alpha$ ) (Moieni et al., 2015). A recent longitudinal study highlighted the association between systemic inflammation and depression, demonstrating higher depression scores and inflammatory levels (CRP, IL-6 and fibrinogen) in women, compared to men (Beydoun et al., 2020). Recently, a study focusing on severe suicidal peri-partum depression (PPD), implicated KYN pathway dysregulation followed by increased plasma inflammatory responses (IL-6, IL-8, IL-2 and QUIN) and serotonergic system alterations (Achtyes et al., 2020).

Besides the demonstrated gender-based differences of inflammatory expression, a recent study reported gender-dependent molecular signatures in MDD patient transcriptome (Seney et al., 2018). Both genders revealed elevated expression levels for MHC and antigen-processing genes in corticolimbic areas (AMY, PFC, Cg), but microglial-related gene expression showed significant region-dependent decreases in women and respective increases in men. Gender differences were also reported in synaptic function and plasticity genes (higher in women than men), suggesting increased microglial phagocytosis of dendritic neuronal spines (Seney et al., 2018). However, considering the grave effects that gonadal hormones exert in mental disorders during adolescence, it is important to further explore the gender differences emerging on early adulthood.

Microglia have been considered in the past as a homogeneous cell population (Ginhoux and Williams, 2016). However, single-cell RNA sequencing has revealed signatures associated with distinct physiological microglial functions and subtypes (Li and Barres, 2018; Hammond et al., 2019). Interestingly, Hoxb8-expressing microglia, which account for one-third of all microglia in the adult mouse brain), could be related to sex differences in mood disorder pathophysiology (De et al., 2018): loss of function of microglial Hoxb8, caused anxiety-related symptoms and obsessive compulsion with higher severity in female mice, potentially regulated by progesterone and  $\beta$ -estradiol (Tränkner et al., 2019).

Animal work has provided additional insights on the sex differences observed in microglial-

### JPET/2020/266163 - Version 3

mediated immune mechanisms during mental disorders. Restraint stress can augment microglial density and affect microglial CX3CR1 expression only in the PFC of female rats (Bollinger et al., 2016). Microglia-related transcriptional alterations in iNOS, Arg1, and CD200 suggested that male and female rat microglia respond differently (Bollinger et al., 2016). Sex differences were also obvious in microglial morphological features in several brain regions (AMY, OFC and HPC) (Bollinger et al., 2017), possibly affecting differentially neuronal plasticity.

#### *Traumatic and Schizophrenia disorders*

Females have higher PTSD prevalence than males (Olf et al., 2007) and higher heritability (Duncan et al., 2018). Sex hormones influence the noradrenergic response to aversive stimuli (Segal and Cahill, 2009; Lithari et al., 2010) and show greater AMY sensitivity after threatening stimuli (Williams et al., 2005), corroborating previous reports of inflammatory gender-dependent differences in PTSD individuals (Neylan et al., 2011). A recent PTSD transcriptome mega-analysis of seven types of trauma (intrapersonal, assault, combat, childhood and others) demonstrated a shared molecular convergence in inflammatory cytokine, innate immune and IFN-signaling cascades in both genders (Breen et al., 2018). However, the study also revealed gender-dependent alterations in several signaling modules (IL-12, MAPK, wound healing and lipid metabolism), which were associated with specific modes of trauma (Breen et al., 2018). Correspondingly, in a recent PTSD rodent model, researchers detected sex-specific transcriptional responses to trauma, involving NF- $\kappa$ B activation (TNF- $\alpha$  upregulation) and dysregulated synaptic plasticity in female HPC (Kim and Uddin, 2020).

In SCZ higher disease severity and frequency is evident in men (Abel et al., 2010), and the mean disease onset is 5 years earlier than women (Andersen, 2003). Interestingly, there is an increase of SCZ psychotic episodes in women when post-partum (when estrogen levels drop suddenly) (Riecher-Rössler, 2017a), as well as around menopause (Castle and Murray, 1993). These data support the “estrogen hypothesis”, which postulates that estrogen can exert a

protective effect in SCZ (Grigoriadis and Seeman, 2002).

The SCZ etiopathogenesis, compared to other mental disorders, involves predominantly neurodevelopmental abnormalities correlated with genetic factors and maternal infections as pathogenic contributors. It is believed that estrogen modulates microglial receptors and activity (Sierra et al., 2008) reducing inflammation (Sarvari et al., 2011). This sex-dependent hypothesis in SCZ human studies has focused on MHCII-microglial activation, evident in post-mortem studies of SCZ patients (Sekar et al., 2016; Mondelli et al., 2017). In a recent study, variations of complement component C4 in blood, brain and lymphoblastoid cells drove stronger vulnerability and severity in men than in women (Kamitaki et al., 2020). Both C4 and its effector C3 are found at higher levels in plasma and CSF from men aged between 20 to 50 years, while in women this increase occurs after menopause (40-50 years) (Ritchie et al., 2004; Gaya da Costa et al., 2018). As C4 increase occurs during the same time frame as disease vulnerability, it is suggested that microglial complement receptors in SCZ disorder may be affected differently by sex.

This hypothesis is also supported by several rodent maternal immune activation (MIA) studies, in which male offspring are more vulnerable than female (Mattei et al., 2014; Deane et al., 2017; Hui et al., 2018; Notter et al., 2018). Interestingly, studies have revealed sex-based increases of inflammatory responses and “dark” microglial density (the cells appear dark in electron microscopy and interact with blood vessels and synapses), as well as extensive synapse interaction and oxidative stress in the HPC of males after exposure to prenatal PolyI:C. Therefore, prenatal infection may differentially affect microglial responses in each gender (Hui et al., 2018).

Overall, microglia emerge as key players in traumatic and schizophrenia disorder onset but is still not clear whether these inflammatory effects occur only in a subset of severe disease cases, or whether these mechanisms are exerted in a sex-dependent manner (Figure 2).

## **Conclusions**



### JPET/2020/266163 - Version 3

Increasing evidence supports inflammatory mechanisms underlying the pathophysiology of mental disorders. Immune mechanisms have pronounced regulatory effects on the psychosocial stressor-genetic diathesis interaction (Figure 1), demonstrating heightened inflammatory load in mental disorders. However, despite the evident induction of peripheral and CNS immune components and mediators in mental disorder patients, these effects are not consistently reported. Could this possibly mean that inflammatory responses and microglial activation are evident only on a subset of patients with distinct pathophenotype or disease severity? (Figure 2)

Post-mortem studies from severe cases of depression, trauma and psychoses have reported association with microglial activation and increases of peripheral and central pro-inflammatory responses (Haarman et al., 2014; Setiawan et al., 2015a; Cattaneo et al., 2016; Mondelli et al., 2017; Raison, 2017; Wittenberg et al., 2020). These observations suggest that inflammatory cytokines along with microglial activity may serve as prognostic markers of disease development, severity as well as expected resistance to treatment. With this in mind, anti-inflammatory regimens could be utilized to supplement the current anti-depressant treatments: non-steroidal anti-inflammatory drugs (NSAIDS), minocycline and other immunosuppressive drugs (Miller et al., 2017; Raison, 2017; Pfau et al., 2018; Wittenberg et al., 2020), targeting moderate to severe disease cases.

Sex hormones play equally important role in mental disease modulation (Figure 2). Gender effects have come to provide an additional layer of complexity to immunopsychiatry, integrating psychosocial, genetic and developmental factors under the prism of sex hormonal influence. This complexity though, if used correctly, would introduce gender as a valuable part of this equation, and unveil novel pharmacological interventions for modern psychiatry.

### Acknowledgements

### **JPET/2020/266163 - Version 3**

We thank members of the lab for helpful discussions. This work was partially supported by an AHA predoctoral fellowship 19PRE34370044 (AGK) and R01MH123093.

### **Authorship Contributions**

A.G.K wrote and edited and SET contributed to the writing and editing of the manuscript

## References

- Abbott NJ, Rönnbäck L and Hansson E (2006) Astrocyte-endothelial interactions at the blood-brain barrier. *Nature reviews Neuroscience* **7**:41-53.
- Abel KM, Drake R and Goldstein JM (2010) Sex differences in schizophrenia. *International review of psychiatry (Abingdon, England)* **22**:417-428.
- Abelson JL, Khan S, Liberzon I and Young EA (2007) HPA axis activity in patients with panic disorder: review and synthesis of four studies. *Depression and anxiety* **24**:66-76.
- Abiega O, Beccari S, Diaz-Aparicio I, Nadjar A, Layé S, Leyrolle Q, Gómez-Nicola D, Domercq M, Pérez-Samartín A, Sánchez-Zafra V, Paris I, Valero J, Savage JC, Hui C-W, Tremblay M-È, Deudero JJP, Brewster AL, Anderson AE, Zaldumbide L, Galbarriatu L, Marinas A, Vivanco Md, Matute C, Maletic-Savatic M, Encinas JM and Sierra A (2016) Neuronal Hyperactivity Disturbs ATP Microgradients, Impairs Microglial Motility, and Reduces Phagocytic Receptor Expression Triggering Apoptosis/Microglial Phagocytosis Uncoupling. *PLoS Biol* **14**:e1002466-e1002466.
- Achtyes E, Keaton SA, Smart L, Burmeister AR, Heilman PL, Krzyzanowski S, Nagalla M, Guillemin GJ, Escobar Galvis ML, Lim CK, Muzik M, Postolache TT, Leach R and Brundin L (2020) Inflammation and kynurenine pathway dysregulation in post-partum women with severe and suicidal depression. *Brain, behavior, and immunity* **83**:239-247.
- Albert PR (2015) Why is depression more prevalent in women? *Journal of psychiatry & neuroscience : JPN* **40**:219-221.
- Alvares GA, Quintana DS, Kemp AH, Van Zwieten A, Balleine BW, Hickie IB and Guastella AJ (2013) Reduced heart rate variability in social anxiety disorder: associations with gender and symptom severity. *PloS one* **8**:e70468.
- Andersen SL (2003) Trajectories of brain development: point of vulnerability or window of opportunity? *Neuroscience and biobehavioral reviews* **27**:3-18.
- Andreassen OA, Harbo HF, Wang Y, Thompson WK, Schork AJ, Mattingsdal M, Zuber V, Bettella F, Ripke S, Kelsoe JR, Kendler KS, O'Donovan MC, Sklar P, McEvoy LK, Desikan RS, Lie BA, Djurovic S and Dale AM (2015) Genetic pleiotropy between multiple sclerosis and schizophrenia but not bipolar disorder: differential involvement of immune-related gene loci. *Molecular psychiatry* **20**:207-214.
- Angold A and Costello EJ (2006) Puberty and depression. *Child and adolescent psychiatric clinics of North America* **15**:919-937, ix.
- Arango C, Díaz-Caneja CM, McGorry PD, Rapoport J, Sommer IE, Vorstman JA, McDaid D, Marín O, Serrano-Drozowskyj E, Freedman R and Carpenter W (2018) Preventive strategies for mental health. *The lancet Psychiatry* **5**:591-604.
- Avitsur R, Stark JL, Dhabhar FS and Sheridan JF (2002) Social stress alters splenocyte phenotype and function. *Journal of neuroimmunology* **132**:66-71.
- Baker DG, Ekhtor NN, Kasckow JW, Hill KK, Zoumakis E, Dashevsky BA, Chrousos GP and Geraciotti TD, Jr. (2001) Plasma and cerebrospinal fluid interleukin-6 concentrations in posttraumatic stress disorder. *Neuroimmunomodulation* **9**:209-217.
- Bale TL and Epperson CN (2015) Sex differences and stress across the lifespan. *Nat Neurosci* **18**:1413-1420.
- Bangasser DA, Eck SR, Telenson AM and Salvatore M (2018) Sex differences in stress regulation of arousal and cognition. *Physiology & behavior* **187**:42-50.
- Banks WA, Kastin AJ and Broadwell RD (1995) Passage of cytokines across the blood-brain barrier. *Neuroimmunomodulation* **2**:241-248.
- Banks WA, Kastin AJ and Gutierrez EG (1994) Penetration of interleukin-6 across the murine blood-brain barrier. *Neuroscience letters* **179**:53-56.
- Bartlett EA, DeLorenzo C, Sharma P, Yang J, Zhang M, Petkova E, Weissman M, McGrath PJ, Fava M, Ogden RT, Kurian BT, Malchow A, Cooper CM, Trombello JM, McInnis M, Adams

- P, Oquendo MA, Pizzagalli DA, Trivedi M and Parsey RV (2018) Pretreatment and early-treatment cortical thickness is associated with SSRI treatment response in major depressive disorder. *Neuropsychopharmacology : official publication of the American College of Neuropsychopharmacology* **43**:2221-2230.
- Baumeister D, Akhtar R, Ciufolini S, Pariante CM and Mondelli V (2016) Childhood trauma and adulthood inflammation: a meta-analysis of peripheral C-reactive protein, interleukin-6 and tumour necrosis factor-alpha. *Molecular psychiatry* **21**:642-649.
- Belsky J, Jonassaint C, Pluess M, Stanton M, Brummett B and Williams R (2009) Vulnerability genes or plasticity genes? *Molecular psychiatry* **14**:746-754.
- Benros ME, Nielsen PR, Nordentoft M, Eaton WW, Dalton SO and Mortensen PB (2011) Autoimmune diseases and severe infections as risk factors for schizophrenia: a 30-year population-based register study. *The American journal of psychiatry* **168**:1303-1310.
- Benros ME, Waltoft BL, Nordentoft M, Ostergaard SD, Eaton WW, Krogh J and Mortensen PB (2013) Autoimmune diseases and severe infections as risk factors for mood disorders: a nationwide study. *JAMA Psychiatry* **70**:812-820.
- Bergink V, Gibney SM and Drexhage HA (2014) Autoimmunity, inflammation, and psychosis: a search for peripheral markers. *Biol Psychiatry* **75**:324-331.
- Bersani FS, Wolkowitz OM, Lindqvist D, Yehuda R, Flory J, Bierer LM, Makotina I, Abu-Amara D, Coy M, Reus VI, Epel ES, Marmar C and Mellon SH (2016) Global arginine bioavailability, a marker of nitric oxide synthetic capacity, is decreased in PTSD and correlated with symptom severity and markers of inflammation. *Brain, behavior, and immunity* **52**:153-160.
- Beydoun MA, Obhi HK, Weiss J, Canas JA, Beydoun HA, Evans MK and Zonderman AB (2020) Systemic inflammation is associated with depressive symptoms differentially by sex and race: a longitudinal study of urban adults. *Molecular psychiatry* **25**:1286-1300.
- Bialas AR and Stevens B (2013) TGF- $\beta$  signaling regulates neuronal C1q expression and developmental synaptic refinement. *Nature neuroscience* **16**:1773-1782.
- Birey F, Kokkosis AG and Aguirre A (2017) Oligodendroglia-lineage cells in brain plasticity, homeostasis and psychiatric disorders. *Current opinion in neurobiology* **47**:93-103.
- Blandino P, Jr., Barnum CJ and Deak T (2006) The involvement of norepinephrine and microglia in hypothalamic and splenic IL-1 $\beta$  responses to stress. *Journal of neuroimmunology* **173**:87-95.
- Blank T and Prinz M (2013) Microglia as modulators of cognition and neuropsychiatric disorders. *Glia* **61**:62-70.
- Blechert J, Michael T, Grossman P, Lajtman M and Wilhelm FH (2007) Autonomic and respiratory characteristics of posttraumatic stress disorder and panic disorder. *Psychosomatic medicine* **69**:935-943.
- Bloomfield PS, Selvaraj S, Veronese M, Rizzo G, Bertoldo A, Owen DR, Bloomfield MA, Bonoldi I, Kalk N, Turkheimer F, McGuire P, de Paola V and Howes OD (2016) Microglial Activity in People at Ultra High Risk of Psychosis and in Schizophrenia: An [(11)C]PBR28 PET Brain Imaging Study. *The American journal of psychiatry* **173**:44-52.
- Bollinger JL, Bergeon Burns CM and Wellman CL (2016) Differential effects of stress on microglial cell activation in male and female medial prefrontal cortex. *Brain, behavior, and immunity* **52**:88-97.
- Bollinger JL, Collins KE, Patel R and Wellman CL (2017) Behavioral stress alters corticolimbic microglia in a sex- and brain region-specific manner. *PloS one* **12**:e0187631.
- Bollinger JL and Wohleb ES (2019) The formative role of microglia in stress-induced synaptic deficits and associated behavioral consequences. *Neuroscience letters* **711**:134369.
- Boscarino JA and Chang J (1999) Higher abnormal leukocyte and lymphocyte counts 20 years after exposure to severe stress: research and clinical implications. *Psychosomatic medicine* **61**:378-386.

- Boyd A, Van de Velde S, Vilagut G, de Graaf R, O'Neill S, Florescu S, Alonso J and Kovess-Masfety V (2015) Gender differences in mental disorders and suicidality in Europe: results from a large cross-sectional population-based study. *Journal of affective disorders* **173**:245-254.
- Brambilla F, Bellodi L and Perna G (1999) Plasma levels of tumor necrosis factor-alpha in patients with panic disorder: effect of alprazolam therapy. *Psychiatry research* **89**:21-27.
- Breen MS, Tylee DS, Maihofer AX, Neylan TC, Mehta D, Binder EB, Chandler SD, Hess JL, Kremen WS, Risbrough VB, Woelk CH, Baker DG, Nievergelt CM, Tsuang MT, Buxbaum JD and Glatt SJ (2018) PTSD Blood Transcriptome Mega-Analysis: Shared Inflammatory Pathways across Biological Sex and Modes of Trauma. *Neuropsychopharmacology : official publication of the American College of Neuropsychopharmacology* **43**:469-481.
- Brown AS and Derkits EJ (2010) Prenatal infection and schizophrenia: a review of epidemiologic and translational studies. *The American journal of psychiatry* **167**:261-280.
- Busse S, Busse M, Schiltz K, Biela H, Gos T, Brisch R, Mawrin C, Schmitt A, Jordan W, Muller UJ, Bernstein HG, Bogerts B and Steiner J (2012) Different distribution patterns of lymphocytes and microglia in the hippocampus of patients with residual versus paranoid schizophrenia: further evidence for disease course-related immune alterations? *Brain, behavior, and immunity* **26**:1273-1279.
- Cai HQ, Catts VS, Webster MJ, Galletly C, Liu D, O'Donnell M, Weickert TW and Weickert CS (2020) Increased macrophages and changed brain endothelial cell gene expression in the frontal cortex of people with schizophrenia displaying inflammation. *Molecular psychiatry* **25**:761-775.
- Canetta S, Sourander A, Surcel HM, Hinkka-Yli-Salomaki S, Leiviska J, Kellendonk C, McKeague IW and Brown AS (2014) Elevated maternal C-reactive protein and increased risk of schizophrenia in a national birth cohort. *The American journal of psychiatry* **171**:960-968.
- Capuron L, Gumnick JF, Musselman DL, Lawson DH, Reemsnyder A, Nemeroff CB and Miller AH (2002) Neurobehavioral effects of interferon-alpha in cancer patients: phenomenology and paroxetine responsiveness of symptom dimensions. *Neuropsychopharmacology : official publication of the American College of Neuropsychopharmacology* **26**:643-652.
- Capuron L and Miller AH (2004) Cytokines and psychopathology: lessons from interferon-alpha. *Biol Psychiatry* **56**:819-824.
- Capuron L, Pagnoni G, Drake DF, Woolwine BJ, Spivey JR, Crowe RJ, Votaw JR, Goodman MM and Miller AH (2012) Dopaminergic mechanisms of reduced basal ganglia responses to hedonic reward during interferon alfa administration. *Archives of general psychiatry* **69**:1044-1053.
- Carpenter LL, Tyrka AR, McDougle CJ, Malison RT, Owens MJ, Nemeroff CB and Price LH (2004) Cerebrospinal fluid corticotropin-releasing factor and perceived early-life stress in depressed patients and healthy control subjects. *Neuropsychopharmacology : official publication of the American College of Neuropsychopharmacology* **29**:777-784.
- Carruthers VB and Suzuki Y (2007) Effects of Toxoplasma gondii infection on the brain. *Schizophrenia bulletin* **33**:745-751.
- Castle DJ and Murray RM (1993) The epidemiology of late-onset schizophrenia. *Schizophrenia bulletin* **19**:691-700.
- Cattaneo A, Ferrari C, Uher R, Bocchio-Chiavetto L, Riva MA and Pariante CM (2016) Absolute Measurements of Macrophage Migration Inhibitory Factor and Interleukin-1-β mRNA Levels Accurately Predict Treatment Response in Depressed Patients. *The international journal of neuropsychopharmacology* **19**.
- Cetin T, Guloksuz S, Cetin EA, Gazioglu SB, Deniz G, Oral ET and van Os J (2012) Plasma concentrations of soluble cytokine receptors in euthymic bipolar patients with and without subsyndromal symptoms. *BMC psychiatry* **12**:158.

- Chan RF, Turecki G, Shabalín AA, Guintivano J, Zhao M, Xie LY, van Grootheest G, Kaminsky ZA, Dean B, Penninx B, Aberg KA and van den Oord E (2020) Cell Type-Specific Methylome-wide Association Studies Implicate Neurotrophin and Innate Immune Signaling in Major Depressive Disorder. *Biol Psychiatry* **87**:431-442.
- Conversano C, Carmassi C, Carlini M, Casu G, Gremigni P and Dell'Osso L (2015) Interferon alpha Therapy in Patients with Chronic Hepatitis C Infection: Quality of Life and Depression. *Hematology reports* **7**:5632.
- Conway KP, Compton W, Stinson FS and Grant BF (2006) Lifetime comorbidity of DSM-IV mood and anxiety disorders and specific drug use disorders: results from the National Epidemiologic Survey on Alcohol and Related Conditions. *The Journal of clinical psychiatry* **67**:247-257.
- Copeland WE, Shanahan L, Worthman C, Angold A and Costello EJ (2012) Generalized anxiety and C-reactive protein levels: a prospective, longitudinal analysis. *Psychological medicine* **42**:2641-2650.
- Costello EJ, Worthman C, Erkanli A and Angold A (2007) Prediction from low birth weight to female adolescent depression: a test of competing hypotheses. *Archives of general psychiatry* **64**:338-344.
- D'Mello C and Swain MG (2017) Immune-to-Brain Communication Pathways in Inflammation-Associated Sickness and Depression. *Current topics in behavioral neurosciences* **31**:73-94.
- Dahm L, Ott C, Steiner J, Stepniak B, Teegen B, Saschenbrecker S, Hammer C, Borowski K, Begemann M, Lemke S, Rentzsch K, Probst C, Martens H, Wienands J, Spalletta G, Weissenborn K, Stocker W and Ehrenreich H (2014) Seroprevalence of autoantibodies against brain antigens in health and disease. *Annals of neurology* **76**:82-94.
- Dalmau J, Lancaster E, Martinez-Hernandez E, Rosenfeld MR and Balice-Gordon R (2011) Clinical experience and laboratory investigations in patients with anti-NMDAR encephalitis. *The Lancet Neurology* **10**:63-74.
- Danese A, Caspi A, Williams B, Ambler A, Sugden K, Mika J, Werts H, Freeman J, Pariante CM, Moffitt TE and Arseneault L (2011) Biological embedding of stress through inflammation processes in childhood. *Molecular psychiatry* **16**:244-246.
- Davalos D, Grutzendler J, Yang G, Kim JV, Zuo Y, Jung S, Littman DR, Dustin ML and Gan W-B (2005) ATP mediates rapid microglial response to local brain injury in vivo. *Nature neuroscience* **8**:752-758.
- de Oliveira JF, Wiener CD, Jansen K, Portela LV, Lara DR, Souza LDM, da Silva RA, Moreira FP and Osés JP (2018) Serum levels of interleukins IL-6 and IL-10 in individuals with posttraumatic stress disorder in a population-based sample. *Psychiatry research* **260**:111-115.
- de Punder K, Entringer S, Heim C, Deuter CE, Otte C, Wingenfeld K and Kuehl LK (2018) Inflammatory Measures in Depressed Patients With and Without a History of Adverse Childhood Experiences. *Frontiers in psychiatry* **9**:610.
- De S, Van Deren D, Peden E, Hockin M, Boulet A, Titen S and Capecchi MR (2018) Two distinct ontogenies confer heterogeneity to mouse brain microglia. *Development (Cambridge, England)* **145**.
- Deane AR, Millar J, Bilkey DK and Ward RD (2017) Maternal immune activation in rats produces temporal perception impairments in adult offspring analogous to those observed in schizophrenia. *PloS one* **12**:e0187719.
- Dedert EA, Calhoun PS, Watkins LL, Sherwood A and Beckham JC (2010) Posttraumatic stress disorder, cardiovascular, and metabolic disease: a review of the evidence. *Annals of behavioral medicine : a publication of the Society of Behavioral Medicine* **39**:61-78.

- Derry HM, Fagundes CP, Andridge R, Glaser R, Malarkey WB and Kiecolt-Glaser JK (2013) Lower subjective social status exaggerates interleukin-6 responses to a laboratory stressor. *Psychoneuroendocrinology* **38**:2676-2685.
- Dhabhar FS, Malarkey WB, Neri E and McEwen BS (2012) Stress-induced redistribution of immune cells--from barracks to boulevards to battlefields: a tale of three hormones--Curt Richter Award winner. *Psychoneuroendocrinology* **37**:1345-1368.
- Dickerson F, Stallings C, Origoni A, Vaughan C, Katsafanas E, Khushalani S and Yolken R (2014) Antibodies to Toxoplasma gondii in individuals with mania. *Bipolar disorders* **16**:129-136.
- Dieleman GC, Huizink AC, Tulen JH, Utens EM, Creemers HE, van der Ende J and Verhulst FC (2015) Alterations in HPA-axis and autonomic nervous system functioning in childhood anxiety disorders point to a chronic stress hypothesis. *Psychoneuroendocrinology* **51**:135-150.
- Disease GBD, Injury I and Prevalence C (2018) Global, regional, and national incidence, prevalence, and years lived with disability for 354 diseases and injuries for 195 countries and territories, 1990-2017: a systematic analysis for the Global Burden of Disease Study 2017. *Lancet* **392**:1789-1858.
- Doorduyn J, de Vries EF, Willemsen AT, de Groot JC, Dierckx RA and Klein HC (2009) Neuroinflammation in schizophrenia-related psychosis: a PET study. *Journal of nuclear medicine : official publication, Society of Nuclear Medicine* **50**:1801-1807.
- Dowlati Y, Herrmann N, Swardfager W, Liu H, Sham L, Reim EK and Lanctot KL (2010) A meta-analysis of cytokines in major depression. *Biol Psychiatry* **67**:446-457.
- Drexhage RC, Hoogenboezem TH, Versnel MA, Berghout A, Nolen WA and Drexhage HA (2011) The activation of monocyte and T cell networks in patients with bipolar disorder. *Brain, behavior, and immunity* **25**:1206-1213.
- Dudek KA, Dion-Albert L, Lebel M, LeClair K, Labrecque S, Tuck E, Ferrer Perez C, Golden SA, Tamminga C, Turecki G, Mechawar N, Russo SJ and Menard C (2020) Molecular adaptations of the blood-brain barrier promote stress resilience vs. depression. *Proceedings of the National Academy of Sciences of the United States of America* **117**:3326-3336.
- Duman RS and Li N (2012) A neurotrophic hypothesis of depression: role of synaptogenesis in the actions of NMDA receptor antagonists. *Philosophical transactions of the Royal Society of London Series B, Biological sciences* **367**:2475-2484.
- Duncan LE, Ratanatharathorn A, Aiello AE, Almli LM, Amstadter AB, Ashley-Koch AE, Baker DG, Beckham JC, Bierut LJ, Bisson J, Bradley B, Chen CY, Dalvie S, Farrer LA, Galea S, Garrett ME, Gelernter JE, Guffanti G, Hauser MA, Johnson EO, Kessler RC, Kimbrel NA, King A, Koen N, Kranzler HR, Logue MW, Maihofer AX, Martin AR, Miller MW, Morey RA, Nugent NR, Rice JP, Ripke S, Roberts AL, Saccone NL, Smoller JW, Stein DJ, Stein MB, Sumner JA, Uddin M, Ursano RJ, Wildman DE, Yehuda R, Zhao H, Daly MJ, Liberzon I, Ressler KJ, Nievergelt CM and Koenen KC (2018) Largest GWAS of PTSD (N=20 070) yields genetic overlap with schizophrenia and sex differences in heritability. *Molecular psychiatry* **23**:666-673.
- Engler H, Bailey MT, Engler A and Sheridan JF (2004) Effects of repeated social stress on leukocyte distribution in bone marrow, peripheral blood and spleen. *Journal of neuroimmunology* **148**:106-115.
- Engler H, Bailey MT, Engler A, Stiner-Jones LM, Quan N and Sheridan JF (2008) Interleukin-1 receptor type 1-deficient mice fail to develop social stress-associated glucocorticoid resistance in the spleen. *Psychoneuroendocrinology* **33**:108-117.
- Engler H, Engler A, Bailey MT and Sheridan JF (2005) Tissue-specific alterations in the glucocorticoid sensitivity of immune cells following repeated social defeat in mice. *Journal of neuroimmunology* **163**:110-119.

- Eraly SA, Nievergelt CM, Maihofer AX, Barkauskas DA, Biswas N, Agorastos A, O'Connor DT and Baker DG (2014) Assessment of plasma C-reactive protein as a biomarker of posttraumatic stress disorder risk. *JAMA Psychiatry* **71**:423-431.
- Faravelli C, Lo Sauro C, Godini L, Lelli L, Benni L, Pietrini F, Lazzeretti L, Talamba GA, Fioravanti G and Ricca V (2012) Childhood stressful events, HPA axis and anxiety disorders. *World journal of psychiatry* **2**:13-25.
- Feinstein A, Magalhaes S, Richard JF, Audet B and Moore C (2014) The link between multiple sclerosis and depression. *Nature reviews Neurology* **10**:507-517.
- Felger JC, Alagbe O, Hu F, Mook D, Freeman AA, Sanchez MM, Kalin NH, Ratti E, Nemeroff CB and Miller AH (2007) Effects of interferon-alpha on rhesus monkeys: a nonhuman primate model of cytokine-induced depression. *Biol Psychiatry* **62**:1324-1333.
- Felger JC, Haroon E, Patel TA, Goldsmith DR, Wommack EC, Woolwine BJ, Le N-A, Feinberg R, Tansey MG and Miller AH (2018) What does plasma CRP tell us about peripheral and central inflammation in depression? *Molecular psychiatry*.
- Felger JC, Li L, Marvar PJ, Woolwine BJ, Harrison DG, Raison CL and Miller AH (2013) Tyrosine metabolism during interferon-alpha administration: association with fatigue and CSF dopamine concentrations. *Brain, behavior, and immunity* **31**:153-160.
- Felger JC, Li Z, Haroon E, Woolwine BJ, Jung MY, Hu X and Miller AH (2016) Inflammation is associated with decreased functional connectivity within corticostriatal reward circuitry in depression. *Molecular psychiatry* **21**:1358-1365.
- Ferrari AJ, Charlson FJ, Norman RE, Patten SB, Freedman G, Murray CJ, Vos T and Whiteford HA (2013) Burden of depressive disorders by country, sex, age, and year: findings from the global burden of disease study 2010. *PLoS Med* **10**:e1001547.
- Filkowski MM, Olsen RM, Duda B, Wanger TJ and Sabatinelli D (2017) Sex differences in emotional perception: Meta analysis of divergent activation. *Neuroimage* **147**:925-933.
- Fillman SG, Cloonan N, Catts VS, Miller LC, Wong J, McCrossin T, Cairns M and Weickert CS (2013) Increased inflammatory markers identified in the dorsolateral prefrontal cortex of individuals with schizophrenia. *Molecular psychiatry* **18**:206-214.
- Fleshner M, Frank M and Maier SF (2017) Danger Signals and Inflammasomes: Stress-Evoked Sterile Inflammation in Mood Disorders. *Neuropsychopharmacology : official publication of the American College of Neuropsychopharmacology* **42**:36-45.
- Foley C, Corvin A and Nakagome S (2017) Genetics of Schizophrenia: Ready to Translate? *Current psychiatry reports* **19**:61.
- Fontainhas AM, Wang M, Liang KJ, Chen S, Mettu P, Damani M, Fariss RN, Li W and Wong WT (2011) Microglial morphology and dynamic behavior is regulated by ionotropic glutamatergic and GABAergic neurotransmission. *PloS one* **6**:e15973.
- Fonzo GA, Ramsawh HJ, Flagan TM, Sullivan SG, Letamendi A, Simmons AN, Paulus MP and Stein MB (2015) Common and disorder-specific neural responses to emotional faces in generalised anxiety, social anxiety and panic disorders. *The British journal of psychiatry : the journal of mental science* **206**:206-215.
- Forrester JV, McMenamin PG and Dando SJ (2018) CNS infection and immune privilege. *Nature reviews Neuroscience* **19**:655-671.
- Fourgeaud L, Través PG, Tufail Y, Leal-Bailey H, Lew ED, Burrola PG, Callaway P, Zagórska A, Rothlin CV, Nimmerjahn A and Lemke G (2016) TAM receptors regulate multiple features of microglial physiology. *Nature* **532**:240-244.
- Frank MG, Baratta MV, Sprunger DB, Watkins LR and Maier SF (2007) Microglia serve as a neuroimmune substrate for stress-induced potentiation of CNS pro-inflammatory cytokine responses. *Brain, behavior, and immunity* **21**:47-59.
- Fries GR, Walss-Bass C, Bauer ME and Teixeira AL (2019) Revisiting inflammation in bipolar disorder. *Pharmacology, biochemistry, and behavior* **177**:12-19.



- Furuyashiki T and Kitaoka S (2019) Neural mechanisms underlying adaptive and maladaptive consequences of stress: Roles of dopaminergic and inflammatory responses. *Psychiatry and clinical neurosciences* **73**:669-675.
- Gaya da Costa M, Poppelaars F, van Kooten C, Mollnes TE, Tedesco F, Würzner R, Trouw LA, Truedsson L, Daha MR, Roos A and Seelen MA (2018) Age and Sex-Associated Changes of Complement Activity and Complement Levels in a Healthy Caucasian Population. *Front Immunol* **9**:2664.
- Gemma C and Bachstetter AD (2013) The role of microglia in adult hippocampal neurogenesis. *Frontiers in cellular neuroscience* **7**:229-229.
- Giletta M, Slavich GM, Rudolph KD, Hastings PD, Nock MK and Prinstein MJ (2018) Peer victimization predicts heightened inflammatory reactivity to social stress in cognitively vulnerable adolescents. *Journal of child psychology and psychiatry, and allied disciplines* **59**:129-139.
- Gimeno D, Kivimäki M, Brunner EJ, Elovainio M, De Vogli R, Steptoe A, Kumari M, Lowe GD, Rumley A, Marmot MG and Ferrie JE (2009) Associations of C-reactive protein and interleukin-6 with cognitive symptoms of depression: 12-year follow-up of the Whitehall II study. *Psychological medicine* **39**:413-423.
- Ginhoux F, Greter M, Leboeuf M, Nandi S, See P, Gokhan S, Mehler MF, Conway SJ, Ng LG, Stanley ER, Samokhvalov IM and Merad M (2010) Fate mapping analysis reveals that adult microglia derive from primitive macrophages. *Science (New York, NY)* **330**:841-845.
- Ginhoux F and Williams M (2016) Tissue-Resident Macrophage Ontogeny and Homeostasis. *Immunity* **44**:439-449.
- Giovanoli S, Engler H, Engler A, Richetto J, Voget M, Willi R, Winter C, Riva MA, Mortensen PB, Feldon J, Schedlowski M and Meyer U (2013) Stress in puberty unmasks latent neuropathological consequences of prenatal immune activation in mice. *Science (New York, NY)* **339**:1095-1099.
- Glaser R and Kiecolt-Glaser JK (2005) Stress-induced immune dysfunction: implications for health. *Nature reviews Immunology* **5**:243-251.
- Gold PW (2015) The organization of the stress system and its dysregulation in depressive illness. *Molecular psychiatry* **20**:32-47.
- Goldsmith D, Rapaport M and Miller BJ (2016) A meta-analysis of blood cytokine network alterations in psychiatric patients: comparisons between schizophrenia, bipolar disorder and depression. *Molecular psychiatry* **21**:1696-1709.
- Gorman JM, Kent JM, Sullivan GM and Coplan JD (2000) Neuroanatomical hypothesis of panic disorder, revised. *The American journal of psychiatry* **157**:493-505.
- Griffin JM, Fuhrer R, Stansfeld SA and Marmot M (2002) The importance of low control at work and home on depression and anxiety: do these effects vary by gender and social class? *Social science & medicine* (1982) **54**:783-798.
- Grigoriadis S and Seeman MV (2002) The role of estrogen in schizophrenia: implications for schizophrenia practice guidelines for women. *Canadian journal of psychiatry Revue canadienne de psychiatrie* **47**:437-442.
- Guan J, Cai JJ, Ji G and Sham PC (2019) Commonality in dysregulated expression of gene sets in cortical brains of individuals with autism, schizophrenia, and bipolar disorder. *Transl Psychiatry* **9**:152.
- Guo M, Liu T, Guo JC, Jiang XL, Chen F and Gao YS (2012) Study on serum cytokine levels in posttraumatic stress disorder patients. *Asian Pacific journal of tropical medicine* **5**:323-325.
- Haarman BC, Riemersma-Van der Lek RF, de Groot JC, Ruhe HG, Klein HC, Zandstra TE, Burger H, Schoevers RA, de Vries EF, Drexhage HA, Nolen WA and Doorduyn J (2014) Neuroinflammation in bipolar disorder - A [(11)C]-(R)-PK11195 positron emission tomography study. *Brain, behavior, and immunity* **40**:219-225.

- Haber SN (2014) The place of dopamine in the cortico-basal ganglia circuit. *Neuroscience* **282**:248-257.
- Hagemeyer N, Hanft K-M, Akritidou M-A, Unger N, Park ES, Stanley ER, Staszewski O, Dimou L and Prinz M (2017) Microglia contribute to normal myelinogenesis and to oligodendrocyte progenitor maintenance during adulthood. *Acta Neuropathol* **134**:441-458.
- Hammond TR, Dufort C, Dissing-Olesen L, Giera S, Young A, Wysoker A, Walker AJ, Gergits F, Segel M, Nemesh J, Marsh SE, Saunders A, Macosko E, Ginhoux F, Chen J, Franklin RJM, Piao X, McCarroll SA and Stevens B (2019) Single-Cell RNA Sequencing of Microglia throughout the Mouse Lifespan and in the Injured Brain Reveals Complex Cell-State Changes. *Immunity* **50**:253-271.e256.
- Hanisch U-K and Kettenmann H (2007) Microglia: active sensor and versatile effector cells in the normal and pathologic brain. *Nature neuroscience* **10**:1387-1394.
- Hankin BL, Mermelstein R and Roesch L (2007) Sex differences in adolescent depression: stress exposure and reactivity models. *Child development* **78**:279-295.
- Hardingham GE and Bading H (2010) Synaptic versus extrasynaptic NMDA receptor signalling: implications for neurodegenerative disorders. *Nat Rev Neurosci* **11**:682-696.
- Hardingham GE, Fukunaga Y and Bading H (2002) Extrasynaptic NMDARs oppose synaptic NMDARs by triggering CREB shut-off and cell death pathways. *Nat Neurosci* **5**:405-414.
- Haroon E, Miller AH and Sanacora G (2017) Inflammation, Glutamate, and Glia: A Trio of Trouble in Mood Disorders. *Neuropsychopharmacology : official publication of the American College of Neuropsychopharmacology* **42**:193-215.
- Haroon E, Raison CL and Miller AH (2012) Psychoneuroimmunology meets neuropsychopharmacology: translational implications of the impact of inflammation on behavior. *Neuropsychopharmacology : official publication of the American College of Neuropsychopharmacology* **37**:137-162.
- Haroon E, Welle JR, Woolwine BJ, Goldsmith DR, Baer W, Patel T, Felger JC and Miller AH (2020) Associations among peripheral and central kynurenine pathway metabolites and inflammation in depression. *Neuropsychopharmacology : official publication of the American College of Neuropsychopharmacology* **45**:998-1007.
- Harrison NA, Brydon L, Walker C, Gray MA, Steptoe A, Dolan RJ and Critchley HD (2009) Neural origins of human sickness in interoceptive responses to inflammation. *Biol Psychiatry* **66**:415-422.
- Hartwell KJ, Moran-Santa Maria MM, Twal WO, Shaftman S, DeSantis SM, McRae-Clark AL and Brady KT (2013) Association of elevated cytokines with childhood adversity in a sample of healthy adults. *Journal of psychiatric research* **47**:604-610.
- Hauger RL, Olivares-Reyes JA, Dautzenberg FM, Lohr JB, Braun S and Oakley RH (2012) Molecular and cell signaling targets for PTSD pathophysiology and pharmacotherapy. *Neuropharmacology* **62**:705-714.
- Heath NM, Chesney SA, Gerhart JI, Goldsmith RE, Luborsky JL, Stevens NR and Hobfoll SE (2013) Interpersonal violence, PTSD, and inflammation: potential psychogenic pathways to higher C-reactive protein levels. *Cytokine* **63**:172-178.
- Heidt T, Sager HB, Courties G, Dutta P, Iwamoto Y, Zaltsman A, von Zur Muhlen C, Bode C, Fricchione GL, Denninger J, Lin CP, Vinegoni C, Libby P, Swirski FK, Weissleder R and Nahrendorf M (2014a) Chronic variable stress activates hematopoietic stem cells. *Nature medicine* **20**:754-758.
- Heidt T, Sager HB, Courties G, Dutta P, Iwamoto Y, Zaltsman A, von Zur Muhlen C, Bode C, Fricchione GL, Denninger J, Lin CP, Vinegoni C, Libby P, Swirski FK, Weissleder R and Nahrendorf M (2014b) Chronic variable stress activates hematopoietic stem cells. *Nat Med* **20**:754-758.
- Heneka MT, McManus RM and Latz E (2018) Inflammasome signalling in brain function and neurodegenerative disease. *Nat Rev Neurosci* **19**:610-621.

- Heninger GR, Delgado PL and Charney DS (1996) The revised monoamine theory of depression: a modulatory role for monoamines, based on new findings from monoamine depletion experiments in humans. *Pharmacopsychiatry* **29**:2-11.
- Het S, Schoofs D, Rohleder N and Wolf OT (2012) Stress-induced cortisol level elevations are associated with reduced negative affect after stress: indications for a mood-buffering cortisol effect. *Psychosomatic medicine* **74**:23-32.
- Hettema JM, Webb BT, Guo AY, Zhao Z, Maher BS, Chen X, An SS, Sun C, Aggen SH, Kendler KS, Kuo PH, Otowa T, Flint J and van den Oord EJ (2011) Prioritization and association analysis of murine-derived candidate genes in anxiety-spectrum disorders. *Biol Psychiatry* **70**:888-896.
- Hinwood M, Morandini J, Day TA and Walker FR (2012) Evidence that microglia mediate the neurobiological effects of chronic psychological stress on the medial prefrontal cortex. *Cerebral cortex (New York, NY : 1991)* **22**:1442-1454.
- Hodes GE, Kana V, Menard C, Merad M and Russo SJ (2015) Neuroimmune mechanisms of depression. *Nat Neurosci* **18**:1386-1393.
- Hoge EA, Brandstetter K, Moshier S, Pollack MH, Wong KK and Simon NM (2009) Broad spectrum of cytokine abnormalities in panic disorder and posttraumatic stress disorder. *Depression and anxiety* **26**:447-455.
- Hope S, Dieset I, Agartz I, Steen NE, Ueland T, Melle I, Aukrust P and Andreassen OA (2011) Affective symptoms are associated with markers of inflammation and immune activation in bipolar disorders but not in schizophrenia. *Journal of psychiatric research* **45**:1608-1616.
- Horchar MJ and Wohleb ES (2019) Glucocorticoid receptor antagonism prevents microglia-mediated neuronal remodeling and behavioral despair following chronic unpredictable stress. *Brain, behavior, and immunity* **81**:329-340.
- Hornboll B, Macoveanu J, Nejad A, Rowe J, Elliott R, Knudsen GM, Siebner HR and Paulson OB (2018) Neuroticism predicts the impact of serotonin challenges on fear processing in subgenual anterior cingulate cortex. *Sci Rep* **8**:17889.
- Howard DM, Adams MJ, Clarke TK, Hafferty JD, Gibson J, Shirali M, Coleman JRI, Hagenaars SP, Ward J, Wigmore EM, Alloza C, Shen X, Barbu MC, Xu EY, Whalley HC, Marioni RE, Porteous DJ, Davies G, Deary IJ, Hemani G, Berger K, Teismann H, Rawal R, Arolt V, Baune BT, Dannlowski U, Domschke K, Tian C, Hinds DA, and Me Research T, Major Depressive Disorder Working Group of the Psychiatric Genomics C, Trzaskowski M, Byrne EM, Ripke S, Smith DJ, Sullivan PF, Wray NR, Breen G, Lewis CM and McIntosh AM (2019) Genome-wide meta-analysis of depression identifies 102 independent variants and highlights the importance of the prefrontal brain regions. *Nat Neurosci* **22**:343-352.
- Howes OD and McCutcheon R (2017) Inflammation and the neural diathesis-stress hypothesis of schizophrenia: a reconceptualization. *Transl Psychiatry* **7**:e1024.
- Howren MB, Lamkin DM and Suls J (2009) Associations of depression with C-reactive protein, IL-1, and IL-6: a meta-analysis. *Psychosomatic medicine* **71**:171-186.
- Hui CW, St-Pierre A, El Hajj H, Remy Y, Hebert SS, Luheshi GN, Srivastava LK and Tremblay ME (2018) Prenatal Immune Challenge in Mice Leads to Partly Sex-Dependent Behavioral, Microglial, and Molecular Abnormalities Associated with Schizophrenia. *Frontiers in molecular neuroscience* **11**:13.
- Ida T, Hara M, Nakamura Y, Kozaki S, Tsunoda S and Ihara H (2008) Cytokine-induced enhancement of calcium-dependent glutamate release from astrocytes mediated by nitric oxide. *Neuroscience letters* **432**:232-236.
- Jaffee SR and Price TS (2007) Gene-environment correlations: a review of the evidence and implications for prevention of mental illness. *Molecular psychiatry* **12**:432-442.

- Jankord R, Zhang R, Flak JN, Solomon MB, Albertz J and Herman JP (2010) Stress activation of IL-6 neurons in the hypothalamus. *American journal of physiology Regulatory, integrative and comparative physiology* **299**:R343-351.
- Jansen R, Penninx BW, Madar V, Xia K, Milaneschi Y, Hottenga JJ, Hammerschlag AR, Beekman A, van der Wee N, Smit JH, Brooks AI, Tischfield J, Posthuma D, Schoevers R, van Grootheest G, Willemsen G, de Geus EJ, Boomsma DI, Wright FA, Zou F, Sun W and Sullivan PF (2016) Gene expression in major depressive disorder. *Molecular psychiatry* **21**:339-347.
- Janssen DG, Caniato RN, Verster JC and Baune BT (2010) A psychoneuroimmunological review on cytokines involved in antidepressant treatment response. *Human psychopharmacology* **25**:201-215.
- Jergovic M, Bendelja K, Savic Mlakar A, Vojvoda V, Aberle N, Jovanovic T, Rabatic S, Sabioncello A and Vidovic A (2015) Circulating levels of hormones, lipids, and immune mediators in post-traumatic stress disorder - a 3-month follow-up study. *Frontiers in psychiatry* **6**:49.
- Jha MK, Minhajuddin A, Gadad BS, Greer T, Grannemann B, Soyombo A, Mayes TL, Rush AJ and Trivedi MH (2017) Can C-reactive protein inform antidepressant medication selection in depressed outpatients? Findings from the CO-MED trial. *Psychoneuroendocrinology* **78**:105-113.
- Johnson JD, Campisi J, Sharkey CM, Kennedy SL, Nickerson M, Greenwood BN and Fleshner M (2005) Catecholamines mediate stress-induced increases in peripheral and central inflammatory cytokines. *Neuroscience* **135**:1295-1307.
- Jones R (2013) Neurogenetics: Trauma and stress, from child to adult. *Nature reviews Genetics* **14**:77.
- Kajantie E and Phillips DI (2006) The effects of sex and hormonal status on the physiological response to acute psychosocial stress. *Psychoneuroendocrinology* **31**:151-178.
- Kamitaki N, Schizophrenia Working Group of the Psychiatric Genomics C, Psychosis Endophenotypes International C and Wellcome Trust Case-Control C (2020) Complement genes contribute sex-biased vulnerability in diverse disorders. *Nature*.
- Katan M, Moon YP, Paik MC, Sacco RL, Wright CB and Elkind MS (2013) Infectious burden and cognitive function: the Northern Manhattan Study. *Neurology* **80**:1209-1215.
- Kayser MS, Titulaer MJ, Gresa-Arribas N and Dalmau J (2013) Frequency and characteristics of isolated psychiatric episodes in anti-N-methyl-D-aspartate receptor encephalitis. *JAMA neurology* **70**:1133-1139.
- Kemp AH, Silberstein RB, Armstrong SM and Nathan PJ (2004) Gender differences in the cortical electrophysiological processing of visual emotional stimuli. *Neuroimage* **21**:632-646.
- Kendell SF, Krystal JH and Sanacora G (2005) GABA and glutamate systems as therapeutic targets in depression and mood disorders. *Expert opinion on therapeutic targets* **9**:153-168.
- Kessler RC (2003) Epidemiology of women and depression. *Journal of affective disorders* **74**:5-13.
- Khakh BS and Sofroniew MV (2015) Diversity of astrocyte functions and phenotypes in neural circuits. *Nature neuroscience* **18**:942-952.
- Khandaker GM, Cousins L, Deakin J, Lennox BR, Yolken R and Jones PB (2015) Inflammation and immunity in schizophrenia: implications for pathophysiology and treatment. *The lancet Psychiatry* **2**:258-270.
- Khandaker GM, Pearson RM, Zammit S, Lewis G and Jones PB (2014) Association of serum interleukin 6 and C-reactive protein in childhood with depression and psychosis in young adult life: a population-based longitudinal study. *JAMA Psychiatry* **71**:1121-1128.
- Khandaker GM, Zimbron J, Lewis G and Jones PB (2013) Prenatal maternal infection, neurodevelopment and adult schizophrenia: a systematic review of population-based studies. *Psychological medicine* **43**:239-257.

- Killgore WD, Britton JC, Schwab ZJ, Price LM, Weiner MR, Gold AL, Rosso IM, Simon NM, Pollack MH and Rauch SL (2014) Cortico-limbic responses to masked affective faces across ptsd, panic disorder, and specific phobia. *Depression and anxiety* **31**:150-159.
- Kim GS and Uddin M (2020) Sex-specific and shared expression profiles of vulnerability and resilience to trauma in brain and blood. *Biology of Sex Differences* **11**:13.
- Kim S, Hwang Y, Webster MJ and Lee D (2016) Differential activation of immune/inflammatory response-related co-expression modules in the hippocampus across the major psychiatric disorders. *Molecular psychiatry* **21**:376-385.
- Klengel T, Mehta D, Anacker C, Rex-Haffner M, Pruessner JC, Pariante CM, Pace TW, Mercer KB, Mayberg HS, Bradley B, Nemeroff CB, Holsboer F, Heim CM, Ressler KJ, Rein T and Binder EB (2013) Allele-specific FKBP5 DNA demethylation mediates gene-childhood trauma interactions. *Nat Neurosci* **16**:33-41.
- Koo JW, Russo SJ, Ferguson D, Nestler EJ and Duman RS (2010) Nuclear factor-kappaB is a critical mediator of stress-impaired neurogenesis and depressive behavior. *Proceedings of the National Academy of Sciences of the United States of America* **107**:2669-2674.
- Korczak DJ, Pereira S, Koulajian K, Matejcek A and Giacca A (2011) Type 1 diabetes mellitus and major depressive disorder: evidence for a biological link. *Diabetologia* **54**:2483-2493.
- Kosmidis MH, Bozikas VP, Giannouli V, Karavatos A and Fokas K (2012) Familial comorbidity of bipolar disorder and multiple sclerosis: genetic susceptibility, coexistence or causal relationship? *Behavioural neurology* **25**:341-349.
- Krishnadas R, Nicol A, Sassarini J, Puri N, Burden AD, Leman J, Combet E, Pimlott S, Hadley D, McInnes IB and Cavanagh J (2016) Circulating tumour necrosis factor is highly correlated with brainstem serotonin transporter availability in humans. *Brain, behavior, and immunity* **51**:29-38.
- Krishnan V and Nestler EJ (2008) The molecular neurobiology of depression. *Nature* **455**:894-902.
- Kuehner C (2017) Why is depression more common among women than among men? *The lancet Psychiatry* **4**:146-158.
- Kupka RW, Nolen WA, Post RM, McElroy SL, Altshuler LL, Denicoff KD, Frye MA, Keck PE, Jr., Leverich GS, Rush AJ, Suppes T, Pollio C and Drexhage HA (2002) High rate of autoimmune thyroiditis in bipolar disorder: lack of association with lithium exposure. *Biol Psychiatry* **51**:305-311.
- Lacey RE, Kumari M and McMunn A (2013) Parental separation in childhood and adult inflammation: the importance of material and psychosocial pathways. *Psychoneuroendocrinology* **38**:2476-2484.
- Lamers F, Vogelzangs N, Merikangas KR, de Jonge P, Beekman AT and Penninx BW (2013) Evidence for a differential role of HPA-axis function, inflammation and metabolic syndrome in melancholic versus atypical depression. *Molecular psychiatry* **18**:692-699.
- Lee R, Geraciotti TD, Jr., Kasckow JW and Coccaro EF (2005) Childhood trauma and personality disorder: positive correlation with adult CSF corticotropin-releasing factor concentrations. *The American journal of psychiatry* **162**:995-997.
- Lehmann ML, Cooper HA, Maric D and Herkenham M (2016) Social defeat induces depressive-like states and microglial activation without involvement of peripheral macrophages. *Journal of neuroinflammation* **13**:224.
- Lehmann ML, Weigel TK, Cooper HA, Elkahloun AG, Kigar SL and Herkenham M (2018) Decoding microglia responses to psychosocial stress reveals blood-brain barrier breakdown that may drive stress susceptibility. *Scientific Reports* **8**:11240.
- Lehmann ML, Weigel TK, Poffenberger CN and Herkenham M (2019) The Behavioral Sequelae of Social Defeat Require Microglia and Are Driven by Oxidative Stress in Mice. *The Journal of neuroscience : the official journal of the Society for Neuroscience* **39**:5594-5605.

- Lennox B, Coles A and Vincent A (2012) Antibody-mediated encephalitis: A treatable cause of schizophrenia. *The British journal of psychiatry : the journal of mental science* **200**:92-94.
- Li Q and Barres BA (2018) Microglia and macrophages in brain homeostasis and disease. *Nature reviews Immunology* **18**:225-242.
- Li SH and Graham BM (2017) Why are women so vulnerable to anxiety, trauma-related and stress-related disorders? The potential role of sex hormones. *The lancet Psychiatry* **4**:73-82.
- Li Y, Du X-F, Liu C-S, Wen Z-L and Du J-L (2012) Reciprocal regulation between resting microglial dynamics and neuronal activity in vivo. *Dev Cell* **23**:1189-1202.
- Liddel S and Barres B (2015) SnapShot: Astrocytes in Health and Disease. *Cell* **162**:1170-1170.e1171.
- Lin JE, Neylan TC, Epel E and O'Donovan A (2016) Associations of childhood adversity and adulthood trauma with C-reactive protein: A cross-sectional population-based study. *Brain, behavior, and immunity* **53**:105-112.
- Lindqvist D, Wolkowitz OM, Mellon S, Yehuda R, Flory JD, Henn-Haase C, Bierer LM, Abu-Amara D, Coy M, Neylan TC, Makotkine I, Reus VI, Yan X, Taylor NM, Marmar CR and Dhabhar FS (2014) Proinflammatory milieu in combat-related PTSD is independent of depression and early life stress. *Brain, behavior, and immunity* **42**:81-88.
- Lithari C, Frantzidis CA, Papadelis C, Vivas AB, Klados MA, Kourtidou-Papadeli C, Pappas C, Ioannides AA and Bamidis PD (2010) Are females more responsive to emotional stimuli? A neurophysiological study across arousal and valence dimensions. *Brain topography* **23**:27-40.
- Maes M (1995) Evidence for an immune response in major depression: a review and hypothesis. *Progress in neuro-psychopharmacology & biological psychiatry* **19**:11-38.
- Maes M, Bosmans E, De Jongh R, Kenis G, Vandoolaeghe E and Neels H (1997) Increased serum IL-6 and IL-1 receptor antagonist concentrations in major depression and treatment resistant depression. *Cytokine* **9**:853-858.
- Maes M, Van der Planken M, Stevens WJ, Peeters D, DeClerck LS, Bridts CH, Schotte C and Cosyns P (1992) Leukocytosis, monocytosis and neutrophilia: hallmarks of severe depression. *Journal of psychiatric research* **26**:125-134.
- Mantella RC, Butters MA, Amico JA, Mazumdar S, Rollman BL, Begley AE, Reynolds CF and Lenze EJ (2008) Salivary cortisol is associated with diagnosis and severity of late-life generalized anxiety disorder. *Psychoneuroendocrinology* **33**:773-781.
- Marmot M and Feeney A (1997) General explanations for social inequalities in health. *IARC scientific publications*:207-228.
- Marques TR, Ashok AH, Pillinger T, Veronese M, Turkheimer FE, Dazzan P, Sommer IEC and Howes OD (2019) Neuroinflammation in schizophrenia: meta-analysis of in vivo microglial imaging studies. *Psychological medicine* **49**:2186-2196.
- Mattei D, Djodari-Irani A, Hadar R, Pelz A, de Cossio LF, Goetz T, Matyash M, Kettenmann H, Winter C and Wolf SA (2014) Minocycline rescues decrease in neurogenesis, increase in microglia cytokines and deficits in sensorimotor gating in an animal model of schizophrenia. *Brain, behavior, and immunity* **38**:175-184.
- Matthews KA, Chang YF, Thurston RC and Bromberger JT (2014) Child abuse is related to inflammation in mid-life women: role of obesity. *Brain, behavior, and immunity* **36**:29-34.
- McCanlies EC, Araia SK, Joseph PN, Mnatsakanova A, Andrew ME, Burchfiel CM and Violanti JM (2011) C-reactive protein, interleukin-6, and posttraumatic stress disorder symptomatology in urban police officers. *Cytokine* **55**:74-78.
- McDade TW, Hoke M, Borja JB, Adair LS and Kuzawa C (2013) Do environments in infancy moderate the association between stress and inflammation in adulthood? Initial evidence from a birth cohort in the Philippines. *Brain, behavior, and immunity* **31**:23-30.

- McKim DB, Niraula A, Tarr AJ, Wohleb ES, Sheridan JF and Godbout JP (2016) Neuroinflammatory Dynamics Underlie Memory Impairments after Repeated Social Defeat. *The Journal of neuroscience : the official journal of the Society for Neuroscience* **36**:2590-2604.
- McKim DB, Weber MD, Niraula A, Sawicki CM, Liu X, Jarrett BL, Ramirez-Chan K, Wang Y, Roeth RM, Sucaldito AD, Sobol CG, Quan N, Sheridan JF and Godbout JP (2018) Microglial recruitment of IL-1 $\beta$ -producing monocytes to brain endothelium causes stress-induced anxiety. *Molecular psychiatry* **23**:1421-1431.
- Mechawar N and Savitz J (2016) Neuropathology of mood disorders: do we see the stigmata of inflammation? *Transl Psychiatry* **6**:e946.
- Menard C, Pfau ML, Hodes GE, Kana V, Wang VX, Bouchard S, Takahashi A, Flanigan ME, Aleyasin H, LeClair KB, Janssen WG, Labonté B, Parise EM, Lorsch ZS, Golden SA, Heshmati M, Tamminga C, Turecki G, Campbell M, Fayad ZA, Tang CY, Merad M and Russo SJ (2017) Social stress induces neurovascular pathology promoting depression. *Nature neuroscience* **20**:1752-1760.
- Meyer U, Feldon J and Fatemi SH (2009) In-vivo rodent models for the experimental investigation of prenatal immune activation effects in neurodevelopmental brain disorders. *Neuroscience and biobehavioral reviews* **33**:1061-1079.
- Michopoulos V, Norrholm SD and Jovanovic T (2015a) Diagnostic Biomarkers for Posttraumatic Stress Disorder: Promising Horizons from Translational Neuroscience Research. *Biol Psychiatry* **78**:344-353.
- Michopoulos V, Powers A, Gillespie CF, Ressler KJ and Jovanovic T (2017) Inflammation in Fear- and Anxiety-Based Disorders: PTSD, GAD, and Beyond. *Neuropsychopharmacology : official publication of the American College of Neuropsychopharmacology* **42**:254-270.
- Michopoulos V, Rothbaum AO, Jovanovic T, Almlil LM, Bradley B, Rothbaum BO, Gillespie CF and Ressler KJ (2015b) Association of CRP genetic variation and CRP level with elevated PTSD symptoms and physiological responses in a civilian population with high levels of trauma. *The American journal of psychiatry* **172**:353-362.
- Miller AH, Haroon E and Felger JC (2017) Therapeutic Implications of Brain–Immune Interactions: Treatment in Translation. *Neuropsychopharmacology : official publication of the American College of Neuropsychopharmacology* **42**:334-359.
- Miller AH, Jones JF, Drake DF, Tian H, Unger ER and Pagnoni G (2014) Decreased basal ganglia activation in subjects with chronic fatigue syndrome: association with symptoms of fatigue. *PLoS one* **9**:e98156.
- Miller AH, Maletic V and Raison CL (2009) Inflammation and its discontents: the role of cytokines in the pathophysiology of major depression. *Biol Psychiatry* **65**:732-741.
- Miller AH and Raison CL (2016) The role of inflammation in depression: from evolutionary imperative to modern treatment target. *Nature reviews Immunology* **16**:22-34.
- Miller GE, Chen E, Sze J, Marin T, Arevalo JM, Doll R, Ma R and Cole SW (2008) A functional genomic fingerprint of chronic stress in humans: blunted glucocorticoid and increased NF- $\kappa$ B signaling. *Biol Psychiatry* **64**:266-272.
- Miller GE and Cole SW (2012) Clustering of depression and inflammation in adolescents previously exposed to childhood adversity. *Biol Psychiatry* **72**:34-40.
- Miron VE, Boyd A, Zhao J-W, Yuen TJ, Ruckh JM, Shadrach JL, van Wijngaarden P, Wagers AJ, Williams A, Franklin RJM and French-Constant C (2013) M2 microglia and macrophages drive oligodendrocyte differentiation during CNS remyelination. *Nature neuroscience* **16**:1211-1218.
- Misiak B, Ricceri L and Sasiadek MM (2019) Transposable Elements and Their Epigenetic Regulation in Mental Disorders: Current Evidence in the Field. *Frontiers in genetics* **10**:580.

- Miyamoto A, Wake H, Ishikawa AW, Eto K, Shibata K, Murakoshi H, Koizumi S, Moorhouse AJ, Yoshimura Y and Nabekura J (2016) Microglia contact induces synapse formation in developing somatosensory cortex. *Nat Commun* **7**:12540-12540.
- Moieni M, Irwin MR, Jevtic I, Olmstead R, Breen EC and Eisenberger NI (2015) Sex Differences in Depressive and Socioemotional Responses to an Inflammatory Challenge: Implications for Sex Differences in Depression. *Neuropsychopharmacology : official publication of the American College of Neuropsychopharmacology* **40**:1709-1716.
- Mondelli V, Vernon AC, Turkheimer F, Dazzan P and Pariante CM (2017) Brain microglia in psychiatric disorders. *The lancet Psychiatry* **4**:563-572.
- Mostafavi S, Battle A, Zhu X, Potash JB, Weissman MM, Shi J, Beckman K, Haudenschild C, McCormick C, Mei R, Gaineroff MJ, Gindes H, Adams P, Goes FS, Mondimore FM, MacKinnon DF, Notes L, Schweizer B, Furman D, Montgomery SB, Urban AE, Koller D and Levinson DF (2014) Type I interferon signaling genes in recurrent major depression: increased expression detected by whole-blood RNA sequencing. *Molecular psychiatry* **19**:1267-1274.
- Muehlenhard CL and Peterson ZD (2011) Distinguishing Between Sex and Gender: History, Current Conceptualizations, and Implications. *Sex Roles* **64**:791-803.
- Muhtz C, Godemann K, von Alm C, Wittekind C, Goemann C, Wiedemann K, Yassouridis A and Kellner M (2011) Effects of chronic posttraumatic stress disorder on metabolic risk, quality of life, and stress hormones in aging former refugee children. *The Journal of nervous and mental disease* **199**:646-652.
- Muller N and Schwarz MJ (2007) The immune-mediated alteration of serotonin and glutamate: towards an integrated view of depression. *Molecular psychiatry* **12**:988-1000.
- Muneer A (2016) The Neurobiology of Bipolar Disorder: An Integrated Approach. *Chonnam medical journal* **52**:18-37.
- Munkholm K, Brauner JV, Kessing LV and Vinberg M (2013) Cytokines in bipolar disorder vs. healthy control subjects: a systematic review and meta-analysis. *Journal of psychiatric research* **47**:1119-1133.
- Murrough JW, Abdallah CG and Mathew SJ (2017) Targeting glutamate signalling in depression: progress and prospects. *Nat Rev Drug Discov* **16**:472-486.
- Musazzi L, Treccani G and Popoli M (2015) Functional and structural remodeling of glutamate synapses in prefrontal and frontal cortex induced by behavioral stress. *Frontiers in psychiatry* **6**:60.
- Muscatell KA, Dedovic K, Slavich GM, Jarcho MR, Breen EC, Bower JE, Irwin MR and Eisenberger NI (2015) Greater amygdala activity and dorsomedial prefrontal-amygdala coupling are associated with enhanced inflammatory responses to stress. *Brain, behavior, and immunity* **43**:46-53.
- Nagy C, Maitra M, Tanti A, Suderman M, Theroux JF, Davoli MA, Perlman K, Yerko V, Wang YC, Tripathy SJ, Pavlidis P, Mechawar N, Ragoussis J and Turecki G (2020) Single-nucleus transcriptomics of the prefrontal cortex in major depressive disorder implicates oligodendrocyte precursor cells and excitatory neurons. *Nat Neurosci*.
- Nagy C, Suderman M, Yang J, Szyf M, Mechawar N, Ernst C and Turecki G (2015) Astrocytic abnormalities and global DNA methylation patterns in depression and suicide. *Molecular psychiatry* **20**:320-328.
- Nair A and Bonneau RH (2006) Stress-induced elevation of glucocorticoids increases microglia proliferation through NMDA receptor activation. *Journal of neuroimmunology* **171**:72-85.
- Neurauter G, Schrocksnadel K, Scholl-Burgi S, Sperner-Unterwieser B, Schubert C, Ledochowski M and Fuchs D (2008) Chronic immune stimulation correlates with reduced phenylalanine turnover. *Current drug metabolism* **9**:622-627.



- Newton TL, Fernandez-Botran R, Miller JJ and Burns VE (2014) Interleukin-6 and soluble interleukin-6 receptor levels in posttraumatic stress disorder: associations with lifetime diagnostic status and psychological context. *Biological psychology* **99**:150-159.
- Neylan TC, Sun B, Rempel H, Ross J, Lenoci M, O'Donovan A and Pulliam L (2011) Suppressed monocyte gene expression profile in men versus women with PTSD. *Brain, behavior, and immunity* **25**:524-531.
- Nie X, Kitaoka S, Tanaka K, Segi-Nishida E, Imoto Y, Ogawa A, Nakano F, Tomohiro A, Nakayama K, Taniguchi M, Mimori-Kiyosue Y, Kakizuka A, Narumiya S and Furuyashiki T (2018) The Innate Immune Receptors TLR2/4 Mediate Repeated Social Defeat Stress-Induced Social Avoidance through Prefrontal Microglial Activation. *Neuron* **99**:464-479.e467.
- Nimmerjahn A, Kirchhoff F and Helmchen F (2005) Resting microglial cells are highly dynamic surveillants of brain parenchyma in vivo. *Science (New York, NY)* **308**:1314-1318.
- Norrholm SD, Jovanovic T, Olin IW, Sands LA, Karapanou I, Bradley B and Ressler KJ (2011) Fear extinction in traumatized civilians with posttraumatic stress disorder: relation to symptom severity. *Biol Psychiatry* **69**:556-563.
- Northoff G and Sibille E (2014) Why are cortical GABA neurons relevant to internal focus in depression? A cross-level model linking cellular, biochemical and neural network findings. *Molecular psychiatry* **19**:966-977.
- Notarangelo FM, Wilson EH, Horning KJ, Thomas MA, Harris TH, Fang Q, Hunter CA and Schwarcz R (2014) Evaluation of kynurenine pathway metabolism in Toxoplasma gondii-infected mice: implications for schizophrenia. *Schizophrenia research* **152**:261-267.
- Notter T, Coughlin JM, Gschwind T, Weber-Stadlbauer U, Wang Y, Kassiou M, Vernon AC, Benke D, Pomper MG, Sawa A and Meyer U (2018) Translational evaluation of translocator protein as a marker of neuroinflammation in schizophrenia. *Molecular psychiatry* **23**:323-334.
- O'Dushlaine C, The N and Pathway Analysis Subgroup of the Psychiatric Genomics C (2015) Psychiatric genome-wide association study analyses implicate neuronal, immune and histone pathways. *Nature Neuroscience* **18**:199-209.
- Oertelt-Prigione S (2012) The influence of sex and gender on the immune response. *Autoimmunity reviews* **11**:A479-485.
- Oganesyan LP, Mkrtchyan GM, Sukiasyan SH and Boyajyan AS (2009) Classic and alternative complement cascades in post-traumatic stress disorder. *Bulletin of experimental biology and medicine* **148**:859-861.
- Olf M, Langeland W, Draijer N and Gersons BP (2007) Gender differences in posttraumatic stress disorder. *Psychol Bull* **133**:183-204.
- Oram S, Khalifeh H and Howard LM (2017) Violence against women and mental health. *The lancet Psychiatry* **4**:159-170.
- Otte C, Gold SM, Penninx BW, Pariante CM, Etkin A, Fava M, Mohr DC and Schatzberg AF (2016) Major depressive disorder. **2**:16065.
- Pace TW and Miller AH (2009) Cytokines and glucocorticoid receptor signaling. Relevance to major depression. *Annals of the New York Academy of Sciences* **1179**:86-105.
- Pace TW, Mletzko TC, Alagbe O, Musselman DL, Nemeroff CB, Miller AH and Heim CM (2006) Increased stress-induced inflammatory responses in male patients with major depression and increased early life stress. *The American journal of psychiatry* **163**:1630-1633.
- Pan Y, Chen XY, Zhang QY and Kong LD (2014) Microglial NLRP3 inflammasome activation mediates IL-1 $\beta$ -related inflammation in prefrontal cortex of depressive rats. *Brain, behavior, and immunity* **41**:90-100.
- Pantazatos SP, Huang YY, Rosoklija GB, Dwork AJ, Arango V and Mann JJ (2017) Whole-transcriptome brain expression and exon-usage profiling in major depression and suicide:

- evidence for altered glial, endothelial and ATPase activity. *Molecular psychiatry* **22**:760-773.
- Paolicelli RC, Bolasco G, Pagani F, Maggi L, Scianni M, Panzanelli P, Giustetto M, Ferreira TA, Guiducci E, Dumas L, Ragozzino D and Gross CT (2011) Synaptic pruning by microglia is necessary for normal brain development. *Science (New York, NY)* **333**:1456-1458.
- Pape K, Tamouza R, Leboyer M and Zipp F (2019) Immunoneuropsychiatry - novel perspectives on brain disorders. *Nature reviews Neurology* **15**:317-328.
- Parkhurst CN, Yang G, Ninan I, Savas JN, Yates JR, 3rd, Lafaille JJ, Hempstead BL, Littman DR and Gan W-B (2013) Microglia promote learning-dependent synapse formation through brain-derived neurotrophic factor. *Cell* **155**:1596-1609.
- Passos IC, Vasconcelos-Moreno MP, Costa LG, Kunz M, Brietzke E, Quevedo J, Salum G, Magalhaes PV, Kapczinski F and Kauer-Sant'Anna M (2015) Inflammatory markers in post-traumatic stress disorder: a systematic review, meta-analysis, and meta-regression. *The lancet Psychiatry* **2**:1002-1012.
- Patterson PH (2009) Immune involvement in schizophrenia and autism: etiology, pathology and animal models. *Behavioural brain research* **204**:313-321.
- Perrin AJ, Horowitz MA, Roelofs J, Zunszain PA and Pariante CM (2019) Glucocorticoid Resistance: Is It a Requisite for Increased Cytokine Production in Depression? A Systematic Review and Meta-Analysis. *Frontiers in psychiatry* **10**:423.
- Perrotti LI, Hadeishi Y, Ulery PG, Barrot M, Monteggia L, Duman RS and Nestler EJ (2004) Induction of deltaFosB in reward-related brain structures after chronic stress. *The Journal of neuroscience : the official journal of the Society for Neuroscience* **24**:10594-10602.
- Pervanidou P, Kolaitis G, Charitaki S, Margeli A, Ferentinos S, Bakoula C, Lazaropoulou C, Papassotiriou I, Tsiantis J and Chrousos GP (2007) Elevated morning serum interleukin (IL)-6 or evening salivary cortisol concentrations predict posttraumatic stress disorder in children and adolescents six months after a motor vehicle accident. *Psychoneuroendocrinology* **32**:991-999.
- Pfau ML, Menard C and Russo SJ (2018) Inflammatory Mediators in Mood Disorders: Therapeutic Opportunities. *Annual review of pharmacology and toxicology* **58**:411-428.
- Plantinga L, Bremner JD, Miller AH, Jones DP, Velezdar E, Goldberg J and Vaccarino V (2013) Association between posttraumatic stress disorder and inflammation: a twin study. *Brain, behavior, and immunity* **30**:125-132.
- Pop VJ, Maartens LH, Leusink G, van Son MJ, Kottnerus AA, Ward AM, Metcalfe R and Weetman AP (1998) Are autoimmune thyroid dysfunction and depression related? *The Journal of clinical endocrinology and metabolism* **83**:3194-3197.
- Powers A, Dixon HD, Conneely K, Gluck R, Munoz A, Rochat C, Mendoza H, Hartzell G, Ressler KJ, Bradley B, Pace TWW, Umpierrez GE, Schwartz AC, Michopoulos V and Gillespie CF (2019) The differential effects of PTSD, MDD, and dissociation on CRP in trauma-exposed women. *Comprehensive psychiatry* **93**:33-40.
- Pribrig H and Stellwagen D (2014) Neuroimmune regulation of homeostatic synaptic plasticity. *Neuropharmacology* **78**:13-22.
- Prinz M, Erny D and Hagemeyer N (2017) Ontogeny and homeostasis of CNS myeloid cells. *Nat Immunol* **18**:385-392.
- Prinz M and Priller J (2014) Microglia and brain macrophages in the molecular age: from origin to neuropsychiatric disease. *Nat Rev Neurosci* **15**:300-312.
- Raison CL (2017) The Promise and Limitations of Anti-Inflammatory Agents for the Treatment of Major Depressive Disorder. *Current topics in behavioral neurosciences* **31**:287-302.
- Raison CL, Dantzer R, Kelley KW, Lawson MA, Woolwine BJ, Vogt G, Spivey JR, Saito K and Miller AH (2010a) CSF concentrations of brain tryptophan and kynurenines during immune stimulation with IFN-alpha: relationship to CNS immune responses and depression. *Molecular psychiatry* **15**:393-403.

- Raison CL, Lowry CA and Rook GA (2010b) Inflammation, sanitation, and consternation: loss of contact with coevolved, tolerogenic microorganisms and the pathophysiology and treatment of major depression. *Archives of general psychiatry* **67**:1211-1224.
- Raison CL and Miller AH (2013) The evolutionary significance of depression in Pathogen Host Defense (PATHOS-D). *Molecular psychiatry* **18**:15-37.
- Ramirez K, Fornaguera-Trias J and Sheridan JF (2017) Stress-Induced Microglia Activation and Monocyte Trafficking to the Brain Underlie the Development of Anxiety and Depression. *Current topics in behavioral neurosciences* **31**:155-172.
- Ramirez K, Niraula A and Sheridan JF (2016) GABAergic modulation with classical benzodiazepines prevent stress-induced neuro-immune dysregulation and behavioral alterations. *Brain, behavior, and immunity* **51**:154-168.
- Ransohoff RM (2016a) How neuroinflammation contributes to neurodegeneration. *Science (New York, NY)* **353**:777-783.
- Ransohoff RM (2016b) A polarizing question: do M1 and M2 microglia exist? *Nature neuroscience* **19**:987-991.
- Rao JS, Harry GJ, Rapoport SI and Kim HW (2010) Increased excitotoxicity and neuroinflammatory markers in postmortem frontal cortex from bipolar disorder patients. *Molecular psychiatry* **15**:384-392.
- Reader BF, Jarrett BL, McKim DB, Wohleb ES, Godbout JP and Sheridan JF (2015) Peripheral and central effects of repeated social defeat stress: monocyte trafficking, microglial activation, and anxiety. *Neuroscience* **289**:429-442.
- Rector JL, Dowd JB, Loerbroks A, Burns VE, Moss PA, Jarczok MN, Stalder T, Hoffman K, Fischer JE and Bosch JA (2014) Consistent associations between measures of psychological stress and CMV antibody levels in a large occupational sample. *Brain, behavior, and immunity* **38**:133-141.
- Rehm J and Shield KD (2019) Global Burden of Disease and the Impact of Mental and Addictive Disorders. *Current psychiatry reports* **21**:10-10.
- Renault PF, Hoofnagle JH, Park Y, Mullen KD, Peters M, Jones DB, Rustgi V and Jones EA (1987) Psychiatric complications of long-term interferon alfa therapy. *Archives of internal medicine* **147**:1577-1580.
- Riecher-Rössler A (2017a) Oestrogens, prolactin, hypothalamic-pituitary-gonadal axis, and schizophrenic psychoses. *The lancet Psychiatry* **4**:63-72.
- Riecher-Rössler A (2017b) Sex and gender differences in mental disorders. *The lancet Psychiatry* **4**:8-9.
- Ritchie RF, Palomaki GE, Neveux LM, Navolotskaia O, Ledue TB and Craig WY (2004) Reference distributions for complement proteins C3 and C4: a practical, simple and clinically relevant approach in a large cohort. *Journal of clinical laboratory analysis* **18**:1-8.
- Rook GA, Lowry CA and Raison CL (2015) Hygiene and other early childhood influences on the subsequent function of the immune system. *Brain research* **1617**:47-62.
- Rubinow DR and Schmidt PJ (2019) Sex differences and the neurobiology of affective disorders. *Neuropsychopharmacology : official publication of the American College of Neuropsychopharmacology* **44**:111-128.
- Russo SJ and Nestler EJ (2013) The brain reward circuitry in mood disorders. *Nat Rev Neurosci* **14**:609-625.
- Safaiyan S, Kannaiyan N, Snaidero N, Brioschi S, Biber K, Yona S, Edinger AL, Jung S, Rossner MJ and Simons M (2016) Age-related myelin degradation burdens the clearance function of microglia during aging. *Nature neuroscience* **19**:995-998.
- Salter MW and Stevens B (2017) Microglia emerge as central players in brain disease. *Nat Med* **23**:1018-1027.

- Sanacora G and Banasr M (2013) From pathophysiology to novel antidepressant drugs: glial contributions to the pathology and treatment of mood disorders. *Biol Psychiatry* **73**:1172-1179.
- Sandiego CM, Gallezot J-D, Pittman B, Nabulsi N, Lim K, Lin S-F, Matuskey D, Lee J-Y, O'Connor KC, Huang Y, Carson RE, Hannestad J and Cosgrove KP (2015) Imaging robust microglial activation after lipopolysaccharide administration in humans with PET. *Proceedings of the National Academy of Sciences of the United States of America* **112**:12468-12473.
- Santello M, Bezzi P and Volterra A (2011) TNF $\alpha$  controls glutamatergic gliotransmission in the hippocampal dentate gyrus. *Neuron* **69**:988-1001.
- Santello M and Volterra A (2012) TNF $\alpha$  in synaptic function: switching gears. *Trends in neurosciences* **35**:638-647.
- Sarvari M, Hrabovszky E, Kallo I, Solymosi N, Toth K, Liko I, Szeles J, Maho S, Molnar B and Liposits Z (2011) Estrogens regulate neuroinflammatory genes via estrogen receptors  $\alpha$  and  $\beta$  in the frontal cortex of middle-aged female rats. *Journal of neuroinflammation* **8**:82.
- Sasayama D, Hattori K, Wakabayashi C, Teraishi T, Hori H, Ota M, Yoshida S, Arima K, Higuchi T, Amano N and Kunugi H (2013) Increased cerebrospinal fluid interleukin-6 levels in patients with schizophrenia and those with major depressive disorder. *Journal of psychiatric research* **47**:401-406.
- Schafer DP, Lehrman EK, Kautzman AG, Koyama R, Mardinly AR, Yamasaki R, Ransohoff RM, Greenberg ME, Barres BA and Stevens B (2012) Microglia sculpt postnatal neural circuits in an activity and complement-dependent manner. *Neuron* **74**:691-705.
- Schnieder TP, Trencevska I, Rosoklija G, Stankov A, Mann JJ, Smiley J and Dwork AJ (2014) Microglia of prefrontal white matter in suicide. *Journal of neuropathology and experimental neurology* **73**:880-890.
- Segal SK and Cahill L (2009) Endogenous noradrenergic activation and memory for emotional material in men and women. *Psychoneuroendocrinology* **34**:1263-1271.
- Sekar A, Bialas AR, de Rivera H, Davis A, Hammond TR, Kamitaki N, Tooley K, Presumey J, Baum M, Van Doren V, Genovese G, Rose SA, Handsaker RE, Daly MJ, Carroll MC, Stevens B and McCarroll SA (2016) Schizophrenia risk from complex variation of complement component 4. *Nature* **530**:177-183.
- Seney ML, Huo Z, Cahill K, French L, Puralewski R, Zhang J, Logan RW, Tseng G, Lewis DA and Sibille E (2018) Opposite Molecular Signatures of Depression in Men and Women. *Biol Psychiatry* **84**:18-27.
- Setiawan E, Wilson AA, Mizrahi R, Rusjan PM, Miler L, Rajkowska G, Suridjan I, Kennedy JL, Rekkas PV and Houle S (2015a) Role of translocator protein density, a marker of neuroinflammation, in the brain during major depressive episodes. *JAMA psychiatry* **72**:268-275.
- Setiawan E, Wilson AA, Mizrahi R, Rusjan PM, Miler L, Rajkowska G, Suridjan I, Kennedy JL, Rekkas PV, Houle S and Meyer JH (2015b) Role of translocator protein density, a marker of neuroinflammation, in the brain during major depressive episodes. *JAMA Psychiatry* **72**:268-275.
- Shansky RM, Hamo C, Hof PR, Lou W, McEwen BS and Morrison JH (2010) Estrogen promotes stress sensitivity in a prefrontal cortex-amygdala pathway. *Cerebral cortex (New York, NY : 1991)* **20**:2560-2567.
- Shelton RC, Claiborne J, Sidoryk-Wegrzynowicz M, Reddy R, Aschner M, Lewis DA and Mirnics K (2011) Altered expression of genes involved in inflammation and apoptosis in frontal cortex in major depression. *Molecular psychiatry* **16**:751-762.
- Shi J, Levinson DF, Duan J, Sanders AR, Zheng Y, Pe'er I, Dudbridge F, Holmans PA, Whittemore AS, Mowry BJ, Olincy A, Amin F, Cloninger CR, Silverman JM, Buccola NG, Byerley WF, Black DW, Crowe RR, Oksenberg JR, Mirel DB, Kendler KS, Freedman R and Gejman

- PV (2009) Common variants on chromosome 6p22.1 are associated with schizophrenia. *Nature* **460**:753-757.
- Sierra A, Encinas JM, Deudero JJP, Chancey JH, Enikolopov G, Overstreet-Wadiche LS, Tsirka SE and Maletic-Savatic M (2010) Microglia shape adult hippocampal neurogenesis through apoptosis-coupled phagocytosis. *Cell Stem Cell* **7**:483-495.
- Sierra A, Gottfried-Blackmore A, Milner TA, McEwen BS and Bulloch K (2008) Steroid hormone receptor expression and function in microglia. *Glia* **56**:659-674.
- Skelton K, Ressler KJ, Norrholm SD, Jovanovic T and Bradley-Davino B (2012) PTSD and gene variants: new pathways and new thinking. *Neuropharmacology* **62**:628-637.
- Slavich GM and Irwin MR (2014) From stress to inflammation and major depressive disorder: a social signal transduction theory of depression. *Psychol Bull* **140**:774-815.
- Slavich GM and Sacher J (2019) Stress, sex hormones, inflammation, and major depressive disorder: Extending Social Signal Transduction Theory of Depression to account for sex differences in mood disorders. *Psychopharmacology* **236**:3063-3079.
- Smith AK, Conneely KN, Kilaru V, Mercer KB, Weiss TE, Bradley B, Tang Y, Gillespie CF, Cubells JF and Ressler KJ (2011) Differential immune system DNA methylation and cytokine regulation in post-traumatic stress disorder. *American journal of medical genetics Part B, Neuropsychiatric genetics : the official publication of the International Society of Psychiatric Genetics* **156b**:700-708.
- Smith RS (1991) The macrophage theory of depression. *Medical hypotheses* **35**:298-306.
- Smoller JW (2016) The Genetics of Stress-Related Disorders: PTSD, Depression, and Anxiety Disorders. *Neuropsychopharmacology : official publication of the American College of Neuropsychopharmacology* **41**:297-319.
- Soderlund J, Olsson SK, Samuelsson M, Walther-Jallow L, Johansson C, Erhardt S, Landen M and Engberg G (2011) Elevation of cerebrospinal fluid interleukin-1ss in bipolar disorder. *Journal of psychiatry & neuroscience : JPN* **36**:114-118.
- Sofroniew MV and Vinters HV (2010) Astrocytes: biology and pathology. *Acta Neuropathol* **119**:7-35.
- Song C, Li X, Kang Z and Kadotomi Y (2007) Omega-3 fatty acid ethyl-eicosapentaenoate attenuates IL-1beta-induced changes in dopamine and metabolites in the shell of the nucleus accumbens: involved with PLA2 activity and corticosterone secretion. *Neuropsychopharmacology : official publication of the American College of Neuropsychopharmacology* **32**:736-744.
- Stansfeld SA, Head J, Fuhrer R, Wardle J and Cattell V (2003) Social inequalities in depressive symptoms and physical functioning in the Whitehall II study: exploring a common cause explanation. *Journal of epidemiology and community health* **57**:361-367.
- Stark JL, Avitsur R, Padgett DA, Campbell KA, Beck FM and Sheridan JF (2001) Social stress induces glucocorticoid resistance in macrophages. *American journal of physiology Regulatory, integrative and comparative physiology* **280**:R1799-1805.
- Staufenbiel SM, Penninx BW, Spijker AT, Elzinga BM and van Rossum EF (2013) Hair cortisol, stress exposure, and mental health in humans: a systematic review. *Psychoneuroendocrinology* **38**:1220-1235.
- Stefansson H, Ophoff RA, Steinberg S, Andreassen OA, Cichon S, Rujescu D, Werge T, Pietilainen OP, Mors O, Mortensen PB, Sigurdsson E, Gustafsson O, Nyegaard M, Tuulio-Henriksson A, Ingason A, Hansen T, Suvisaari J, Lonnqvist J, Paunio T, Borglum AD, Hartmann A, Fink-Jensen A, Nordentoft M, Hougaard D, Norgaard-Pedersen B, Bottcher Y, Olesen J, Breuer R, Moller HJ, Giegling I, Rasmussen HB, Timm S, Mattheisen M, Bitter I, Rethelyi JM, Magnusdottir BB, Sigmundsson T, Olason P, Masson G, Gulcher JR, Haraldsson M, Fossdal R, Thorgerirsson TE, Thorsteinsdottir U, Ruggeri M, Tosato S, Franke B, Strengman E, Kiemeny LA, Melle I, Djurovic S, Abramova L, Kaleda V, Sanjuan J, de Frutos R, Bramon E, Vassos E, Fraser G, Ettinger U, Picchioni M, Walker

- N, Touloupoulou T, Need AC, Ge D, Yoon JL, Shianna KV, Freimer NB, Cantor RM, Murray R, Kong A, Golimbet V, Carracedo A, Arango C, Costas J, Jonsson EG, Terenius L, Agartz I, Petursson H, Nothen MM, Rietschel M, Matthews PM, Muglia P, Peltonen L, St Clair D, Goldstein DB, Stefansson K and Collier DA (2009) Common variants conferring risk of schizophrenia. *Nature* **460**:744-747.
- Stein DJ, Vasconcelos MF, Albrechet-Souza L, Cereser KMM and de Almeida RMM (2017) Microglial Over-Activation by Social Defeat Stress Contributes to Anxiety- and Depressive-Like Behaviors. *Frontiers in behavioral neuroscience* **11**:207.
- Steiner J, Bielau H, Brisch R, Danos P, Ullrich O, Mawrin C, Bernstein H-G and Bogerts B (2008a) Immunological aspects in the neurobiology of suicide: elevated microglial density in schizophrenia and depression is associated with suicide. *Journal of psychiatric research* **42**:151-157.
- Steiner J, Bielau H, Brisch R, Danos P, Ullrich O, Mawrin C, Bernstein HG and Bogerts B (2008b) Immunological aspects in the neurobiology of suicide: elevated microglial density in schizophrenia and depression is associated with suicide. *Journal of psychiatric research* **42**:151-157.
- Steiner J, Walter M, Gos T, Guillemin GJ, Bernstein HG, Sarnyai Z, Mawrin C, Brisch R, Bielau H, Meyer zu Schwabedissen L, Bogerts B and Myint AM (2011) Severe depression is associated with increased microglial quinolinic acid in subregions of the anterior cingulate gyrus: evidence for an immune-modulated glutamatergic neurotransmission? *Journal of neuroinflammation* **8**:94.
- Stertz L, Magalhaes PV and Kapczinski F (2013) Is bipolar disorder an inflammatory condition? The relevance of microglial activation. *Current opinion in psychiatry* **26**:19-26.
- Strawbridge R, Arnone D, Danese A, Papadopoulos A, Herane Vives A and Cleare AJ (2015) Inflammation and clinical response to treatment in depression: A meta-analysis. *European neuropsychopharmacology : the journal of the European College of Neuropsychopharmacology* **25**:1532-1543.
- Sugden K, Moffitt TE, Pinto L, Poulton R, Williams BS and Caspi A (2016) Is Toxoplasma Gondii Infection Related to Brain and Behavior Impairments in Humans? Evidence from a Population-Representative Birth Cohort. *PloS one* **11**:e0148435.
- Takeuchi H, Jin S, Suzuki H, Doi Y, Liang J, Kawanokuchi J, Mizuno T, Sawada M and Suzumura A (2008) Blockade of microglial glutamate release protects against ischemic brain injury. *Experimental neurology* **214**:144-146.
- Takeuchi H, Jin S, Wang J, Zhang G, Kawanokuchi J, Kuno R, Sonobe Y, Mizuno T and Suzumura A (2006) Tumor necrosis factor-alpha induces neurotoxicity via glutamate release from hemichannels of activated microglia in an autocrine manner. *The Journal of biological chemistry* **281**:21362-21368.
- Tay TL, Bechade C, D'Andrea I, St-Pierre MK, Henry MS, Roumier A and Tremblay ME (2017a) Microglia Gone Rogue: Impacts on Psychiatric Disorders across the Lifespan. *Frontiers in molecular neuroscience* **10**:421.
- Tay TL, Mai D, Dautzenberg J, Fernandez-Klett F, Lin G, Sagar, Datta M, Drougard A, Stempf T, Ardura-Fabregat A, Staszewski O, Margineanu A, Sporbert A, Steinmetz LM, Pospisilik JA, Jung S, Priller J, Grun D, Ronneberger O and Prinz M (2017b) A new fate mapping system reveals context-dependent random or clonal expansion of microglia. *Nat Neurosci* **20**:793-803.
- Taylor SE, Eisenberger NI, Saxbe D, Lehman BJ and Lieberman MD (2006) Neural responses to emotional stimuli are associated with childhood family stress. *Biol Psychiatry* **60**:296-301.
- Tilleux S and Hermans E (2007) Neuroinflammation and regulation of glial glutamate uptake in neurological disorders. *Journal of neuroscience research* **85**:2059-2070.

- Torres-Platas SG, Cruceanu C, Chen GG, Turecki G and Mechawar N (2014) Evidence for increased microglial priming and macrophage recruitment in the dorsal anterior cingulate white matter of depressed suicides. *Brain, behavior, and immunity* **42**:50-59.
- Torres L, Danver J, Ji K, Miyauchi JT, Chen D, Anderson ME, West BL, Robinson JK and Tsirka SE (2016) Dynamic microglial modulation of spatial learning and social behavior. *Brain, behavior, and immunity* **55**:6-16.
- Torrey EF, Bartko JJ, Lun ZR and Yolken RH (2007) Antibodies to *Toxoplasma gondii* in patients with schizophrenia: a meta-analysis. *Schizophrenia bulletin* **33**:729-736.
- Tränkner D, Boulet A, Peden E, Focht R, Van Deren D and Capecchi M (2019) A Microglia Sublineage Protects from Sex-Linked Anxiety Symptoms and Obsessive Compulsion. *Cell reports* **29**:791-799. e793.
- Tremblay M-È, Stevens B, Sierra A, Wake H, Bessis A and Nimmerjahn A (2011) The role of microglia in the healthy brain. *The Journal of neuroscience : the official journal of the Society for Neuroscience* **31**:16064-16069.
- Trigunaite A, Dimo J and Jorgensen TN (2015) Suppressive effects of androgens on the immune system. *Cellular immunology* **294**:87-94.
- Trottier MD, Newsted MM, King LE and Fraker PJ (2008) Natural glucocorticoids induce expansion of all developmental stages of murine bone marrow granulocytes without inhibiting function. *Proceedings of the National Academy of Sciences of the United States of America* **105**:2028-2033.
- Turecki G and Meaney MJ (2016) Effects of the Social Environment and Stress on Glucocorticoid Receptor Gene Methylation: A Systematic Review. *Biol Psychiatry* **79**:87-96.
- Tursich M, Neufeld RW, Frewen PA, Harricharan S, Kibler JL, Rhind SG and Lanius RA (2014) Association of trauma exposure with proinflammatory activity: a transdiagnostic meta-analysis. *Transl Psychiatry* **4**:e413.
- Udina M, Castellvi P, Moreno-Espana J, Navines R, Valdes M, Fornis X, Langohr K, Sola R, Vieta E and Martin-Santos R (2012) Interferon-induced depression in chronic hepatitis C: a systematic review and meta-analysis. *The Journal of clinical psychiatry* **73**:1128-1138.
- Ulrich-Lai YM and Herman JP (2009) Neural regulation of endocrine and autonomic stress responses. *Nat Rev Neurosci* **10**:397-409.
- van Berckel BN, Bossong MG, Boellaard R, Kloet R, Schuitemaker A, Caspers E, Luurtsema G, Windhorst AD, Cahn W, Lammertsma AA and Kahn RS (2008) Microglia activation in recent-onset schizophrenia: a quantitative (R)-[11C]PK11195 positron emission tomography study. *Biol Psychiatry* **64**:820-822.
- van Os J and Kapur S (2009) Schizophrenia. *Lancet* **374**:635-645.
- Varvel NH, Grathwohl SA, Baumann F, Liebig C, Bosch A, Brawek B, Thal DR, Charo IF, Heppner FL, Aguzzi A, Garaschuk O, Ransohoff RM and Jucker M (2012) Microglial repopulation model reveals a robust homeostatic process for replacing CNS myeloid cells. *Proceedings of the National Academy of Sciences of the United States of America* **109**:18150-18155.
- Vezzani A and Viviani B (2015) Neuromodulatory properties of inflammatory cytokines and their impact on neuronal excitability. *Neuropharmacology* **96**:70-82.
- Vidovic A, Gotovac K, Vilibic M, Sabioncello A, Jovanovic T, Rabatic S, Folnegovic-Smalc V and Dekaris D (2011) Repeated assessments of endocrine- and immune-related changes in posttraumatic stress disorder. *Neuroimmunomodulation* **18**:199-211.
- Vieira MM, Ferreira TB, Pacheco PA, Barros PO, Almeida CR, Araujo-Lima CF, Silva-Filho RG, Hygino J, Andrade RM, Linhares UC, Andrade AF and Bento CA (2010) Enhanced Th17 phenotype in individuals with generalized anxiety disorder. *Journal of neuroimmunology* **229**:212-218.
- Vigo D, Thornicroft G and Atun R (2016) Estimating the true global burden of mental illness. *The lancet Psychiatry* **3**:171-178.

**JPET/2020/266163 - Version 3**

- Vogelzangs N, Beekman AT, de Jonge P and Penninx BW (2013) Anxiety disorders and inflammation in a large adult cohort. *Transl Psychiatry* **3**:e249.
- von Kanel R, Hepp U, Kraemer B, Traber R, Keel M, Mica L and Schnyder U (2007) Evidence for low-grade systemic proinflammatory activity in patients with posttraumatic stress disorder. *Journal of psychiatric research* **41**:744-752.
- Vonk R, van der Schot AC, Kahn RS, Nolen WA and Drexhage HA (2007) Is autoimmune thyroiditis part of the genetic vulnerability (or an endophenotype) for bipolar disorder? *Biol Psychiatry* **62**:135-140.
- Wagner EY, Wagner JT, Glaus J, Vandeleur CL, Castela E, Strippoli MP, Vollenweider P, Preisig M and von Kanel R (2015) Evidence for chronic low-grade systemic inflammation in individuals with agoraphobia from a population-based prospective study. *PloS one* **10**:e0123757.
- Wake H, Moorhouse AJ, Jinno S, Kohsaka S and Nabekura J (2009) Resting microglia directly monitor the functional state of synapses in vivo and determine the fate of ischemic terminals. *The Journal of neuroscience : the official journal of the Society for Neuroscience* **29**:3974-3980.
- Walker FR, Nilsson M and Jones K (2013) Acute and chronic stress-induced disturbances of microglial plasticity, phenotype and function. *Current drug targets* **14**:1262-1276.
- Wang C, Yue H, Hu Z, Shen Y, Ma J, Li J, Wang XD, Wang L, Sun B, Shi P, Wang L and Gu Y (2020) Microglia mediate forgetting via complement-dependent synaptic elimination. *Science (New York, NY)* **367**:688-694.
- Wang YL, Han QQ, Gong WQ, Pan DH, Wang LZ, Hu W, Yang M, Li B, Yu J and Liu Q (2018) Microglial activation mediates chronic mild stress-induced depressive- and anxiety-like behavior in adult rats. *Journal of neuroinflammation* **15**:21.
- Weber MD, McKim DB, Niraula A, Witcher KG, Yin W, Sobol CG, Wang Y, Sawicki CM, Sheridan JF and Godbout JP (2018) The Influence of Microglial Elimination and Repopulation on Stress Sensitization Induced by Repeated Social Defeat. *Biological Psychiatry*.
- Wierzbica-Bobrowicz T, Lewandowska E, Lechowicz W, Stepien T and Pasennik E (2005) Quantitative analysis of activated microglia, ramified and damage of processes in the frontal and temporal lobes of chronic schizophrenics. *Folia neuropathologica* **43**:81-89.
- Williams LM, Barton MJ, Kemp AH, Liddell BJ, Peduto A, Gordon E and Bryant RA (2005) Distinct amygdala-autonomic arousal profiles in response to fear signals in healthy males and females. *Neuroimage* **28**:618-626.
- Wittenberg GM, Stylianou A, Zhang Y, Sun Y, Gupta A, Jagannatha PS, Wang D, Hsu B, Curran ME, Khan S, Vértés PE, Cardinal R, Richardson S, Leday G, Freeman T, Hume D, Regan T, Wu Z, Pariante C, Cattaneo A, Zunszain P, Borsini A, Stewart R, Chandran D, Carvalho L, Bell J, Souza-Teodoro LH, Perry H, Harrison N, Jones D, Henderson RB, Chen G, Bullmore ET, Drevets WC and Consortium MRCI (2020) Effects of immunomodulatory drugs on depressive symptoms: A mega-analysis of randomized, placebo-controlled clinical trials in inflammatory disorders. *Molecular psychiatry* **25**:1275-1285.
- Wohleb E, McKim D, Sheridan J and Godbout J (2014a) *Monocyte Trafficking to the Brain with Stress and Inflammation: A Novel Axis of Immune-to-Brain Communication that Influences Mood and Behavior*.
- Wohleb ES, Fenn AM, Pacenta AM, Powell ND, Sheridan JF and Godbout JP (2012) Peripheral innate immune challenge exaggerated microglia activation, increased the number of inflammatory CNS macrophages, and prolonged social withdrawal in socially defeated mice. *Psychoneuroendocrinology* **37**:1491-1505.
- Wohleb ES, Franklin T, Iwata M and Duman RS (2016) Integrating neuroimmune systems in the neurobiology of depression. *Nat Rev Neurosci* **17**:497-511.
- Wohleb ES, Hanke ML, Corona AW, Powell ND, Stiner LTM, Bailey MT, Nelson RJ, Godbout JP and Sheridan JF (2011)  $\beta$ -Adrenergic Receptor Antagonism Prevents Anxiety-Like



- Behavior and Microglial Reactivity Induced by Repeated Social Defeat. *The Journal of Neuroscience* **31**:6277-6288.
- Wohleb ES, McKim DB, Sheridan JF and Godbout JP (2014b) Monocyte trafficking to the brain with stress and inflammation: a novel axis of immune-to-brain communication that influences mood and behavior. *Frontiers in neuroscience* **8**:447.
- Wohleb ES, Patterson JM, Sharma V, Quan N, Godbout JP and Sheridan JF (2014c) Knockdown of interleukin-1 receptor type-1 on endothelial cells attenuated stress-induced neuroinflammation and prevented anxiety-like behavior. *The Journal of neuroscience : the official journal of the Society for Neuroscience* **34**:2583-2591.
- Wohleb ES, Powell ND, Godbout JP and Sheridan JF (2013) Stress-induced recruitment of bone marrow-derived monocytes to the brain promotes anxiety-like behavior. *The Journal of neuroscience : the official journal of the Society for Neuroscience* **33**:13820-13833.
- Wohleb ES, Terwilliger R, Duman CH and Duman RS (2018) Stress-Induced Neuronal Colony Stimulating Factor 1 Provokes Microglia-Mediated Neuronal Remodeling and Depressive-like Behavior. *Biol Psychiatry* **83**:38-49.
- Wong M-L and Licinio J (2001) Research and treatment approaches to depression. *Nat Rev Neurosci* **2**:343-351.
- Wong ML, Arcos-Burgos M, Liu S, Velez JI, Yu C, Baune BT, Jawahar MC, Arolt V, Dannlowski U, Chuah A, Huttley GA, Fogarty R, Lewis MD, Bornstein SR and Licinio J (2017) The PHF21B gene is associated with major depression and modulates the stress response. *Molecular psychiatry* **22**:1015-1025.
- Yohn SE, Arif Y, Haley A, Tripodi G, Baqi Y, Muller CE, Miguel NS, Correa M and Salamone JD (2016) Effort-related motivational effects of the pro-inflammatory cytokine interleukin-6: pharmacological and neurochemical characterization. *Psychopharmacology* **233**:3575-3586.
- Yu S (2018) Uncovering the hidden impacts of inequality on mental health: a global study. *Translational psychiatry* **8**:98-98.
- Zahn-Waxler C, Shirtcliff EA and Marceau K (2008) Disorders of childhood and adolescence: gender and psychopathology. *Annual review of clinical psychology* **4**:275-303.
- Zhang CJ, Jiang M, Zhou H, Liu W, Wang C, Kang Z, Han B, Zhang Q, Chen X, Xiao J, Fisher A, Kaiser WJ, Murayama MA, Iwakura Y, Gao J, Carman J, Dongre A, Dubyak G, Abbott DW, Shi FD, Ransohoff RM and Li X (2018) TLR-stimulated IRAKM activates caspase-8 inflammasome in microglia and promotes neuroinflammation. *The Journal of clinical investigation* **128**:5399-5412.
- Zhu CB, Lindler KM, Owens AW, Daws LC, Blakely RD and Hewlett WA (2010) Interleukin-1 receptor activation by systemic lipopolysaccharide induces behavioral despair linked to MAPK regulation of CNS serotonin transporters. *Neuropsychopharmacology : official publication of the American College of Neuropsychopharmacology* **35**:2510-2520.
- Zou JY and Crews FT (2005) TNF alpha potentiates glutamate neurotoxicity by inhibiting glutamate uptake in organotypic brain slice cultures: neuroprotection by NF kappa B inhibition. *Brain research* **1034**:11-24.

## Legends for Figures

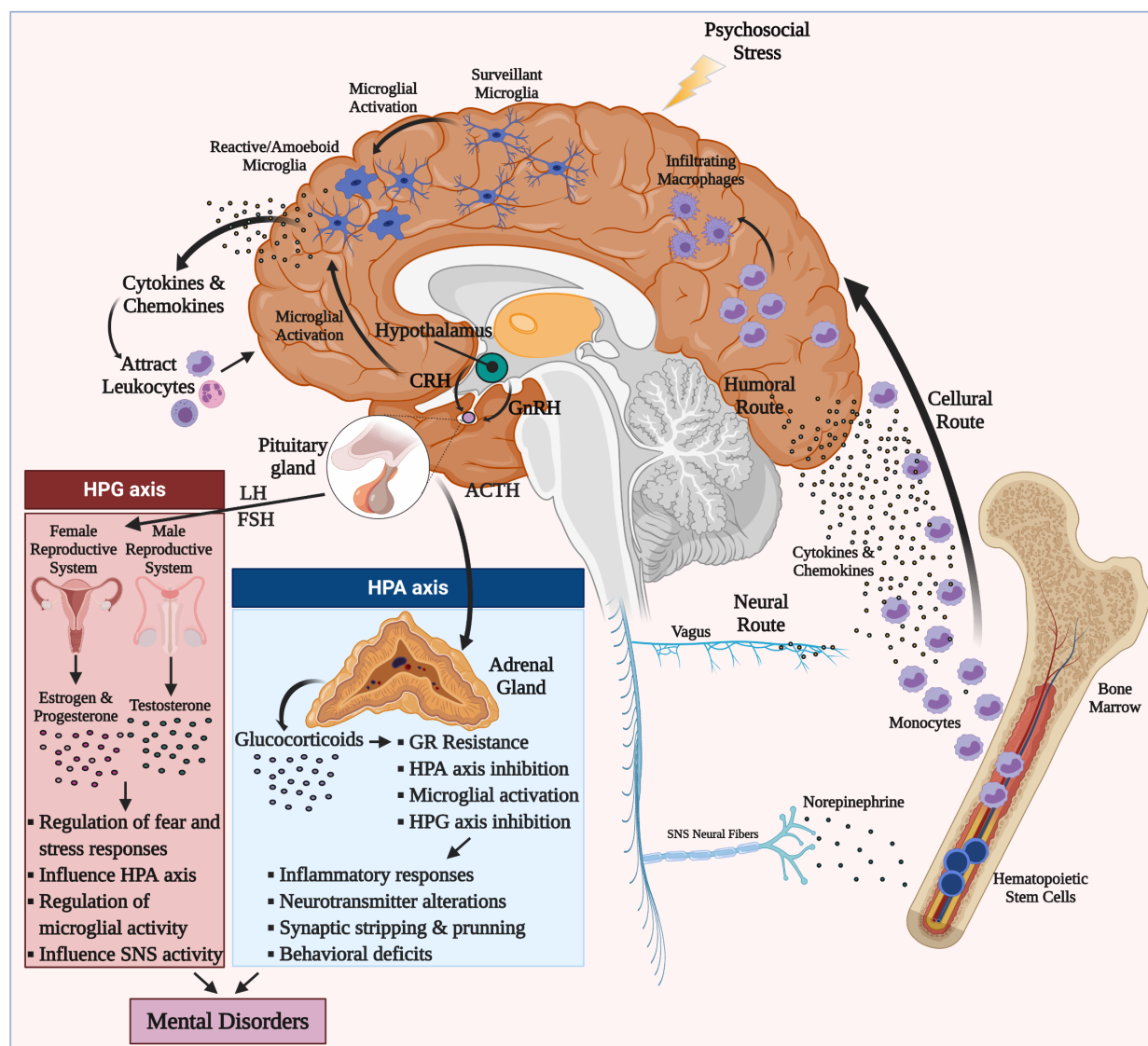


Figure 1

### Figure 1. Sex hormone influence and neuroimmune interplay in mental disorders.

The hypothalamic–pituitary–adrenal (HPA) and hypothalamic–pituitary–gonadal (HPG) axes interact with each other, and shape the downstream inflammatory responses, neurotransmitters, synaptic plasticity and behavioral deficits observed in mental disorders. During psychosocial environmental stressors, microglia get stimulated through activation of immune receptors [toll-like receptors (TLRs), corticotropin releasing hormone (CRH) receptors, cytokine and chemokine receptors]. Subsequent cytokine and chemokine secretion attracts activated myeloid cells to the

**JPET/2020/266163 - Version 3**

brain via the *cellular* route. Once in the brain, infiltrating macrophages can drive central inflammatory responses. During psychosocial stress, catecholamines [e.g., noradrenaline released by activated sympathetic nervous system (SNS) fibers] stimulate increases in myeloid cells (e.g., monocytes) in the periphery. Through induction of inflammatory signaling pathways (such as NF $\kappa$ B and NLRP3 inflammasome), more pro-inflammatory cytokines and chemokines are produced that contribute to glucocorticoid resistance through glucocorticoid receptor cleavage. Pro-inflammatory cytokines and chemokines can access CNS through humoral and neural routes. Monocytes then infiltrate CNS through a compromised blood-brain barrier and differentiate to activated macrophages. Sex hormones affect risk for mental disorders by modulating these pathways at several levels: they i) influence the perception, processing and regulation of threat and fear, ii) modulate SNS/HPA reactivity to psychosocial stressors and *importantly* iii) alter microglial and macrophage signal transduction through post-translational modifications and epigenetic changes. GnRH, gonadotropin releasing hormone; ACTH, adrenocorticotrophic hormone; LH, luteinizing hormone; FSH, follicle stimulating hormone; GR, glucocorticoid.

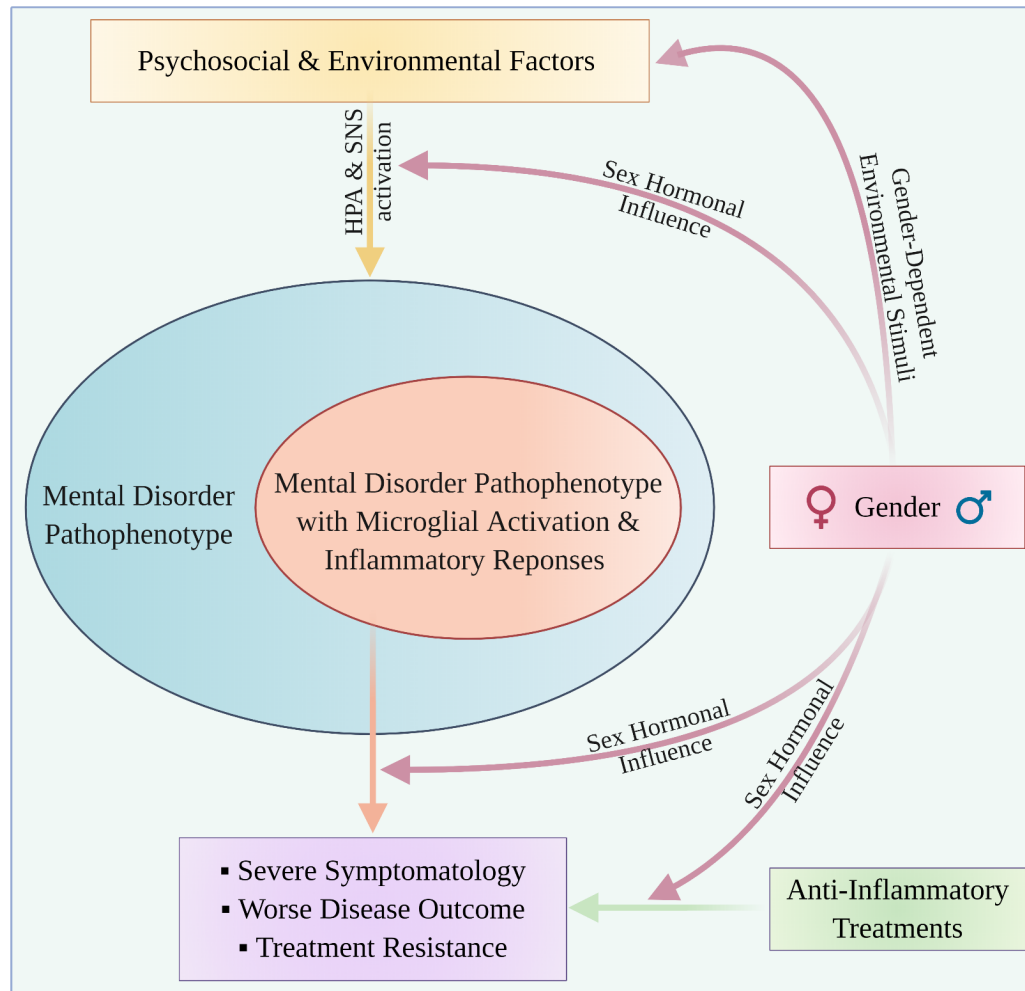


Figure 2

### Figure 2. Gender influence and neuroimmune interplay in mental disorders.

This conceptual model proposes that a wide range of psychosocial and environmental factors (e.g., stress, trauma, abuse, discrimination), induce CNS/peripheral inflammatory responses and microglial activation in a subset of mental disorder patients. These patients exhibit moderate to severe pathophenotype, worse disease outcome and resistance to conventional treatments. The gender can influence the underlying disease and treatment mechanisms on several levels, either via gender-dependent environmental factors or sex hormonal effects. Anti-inflammatory treatments can be used to supplement the current therapeutic regimens in this subset of patients.