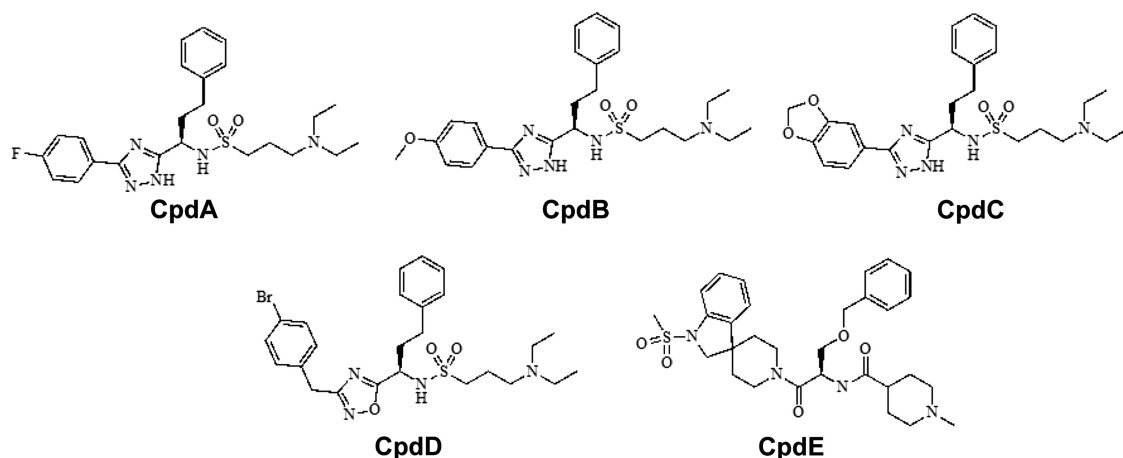


# Correction to “Pharmacologic Inhibition of Ghrelin Receptor Signaling Is Insulin Sparing and Promotes Insulin Sensitivity”

In the above article [Longo KA, Govek EK, Nolan A, McDonagh T, Charoenthongtrakul S, Giuliana DJ, Morgan K, Hixon J, Zhou C, Kelder B, Kopchick JJ, Saunders JO, Navia MA, Curtis R, DiStefano PS, and Geddes BJ (2011) *J Pharmacol Exp Ther* **339**:115–124], the compound structures were not fully identified in the article or in the Supplemental Figures. A new Supplemental Figure 2 has been published online and is shown below. The revised legend is “**Supplemental Fig. 2.** Chemical structures of ghrelin receptor antagonists.” The reference to the supplemental figure in the first paragraph of the *Results* section of the article has also been corrected to read “Compound structures are shown in Supplemental Fig. 2. In addition, compounds were routinely counterscreened against 20 to 100 other drug-like targets (GPCRs, transporters, ion channels, enzymes) and found to be 100- to 2000-fold selective for the human GhrR (data not shown).”



**Supplemental Fig. 2.** Chemical structures of ghrelin receptor antagonists.

The authors regret this error and apologize for any confusion and inconvenience it may have caused.

The online versions of this article have been corrected in departure from the print version.