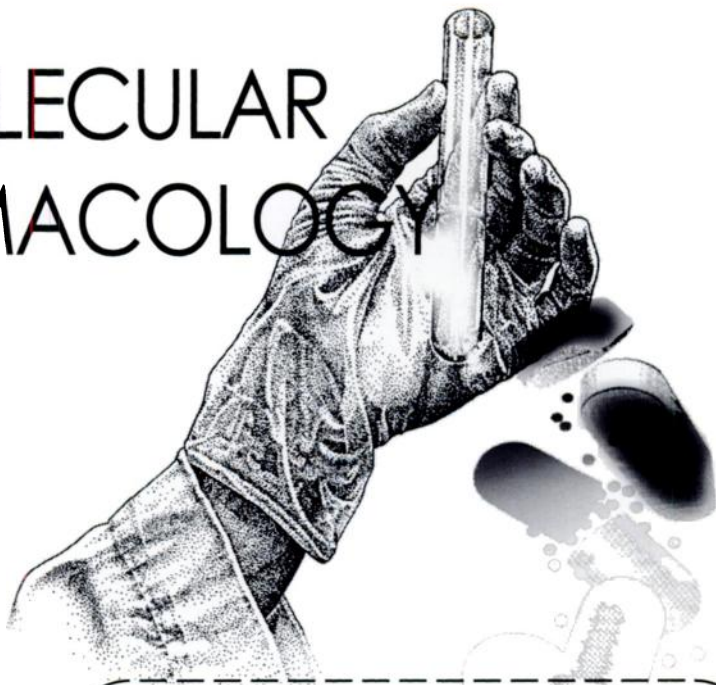


#1 for
impact among all
peer-reviewed
pharmacology journals
--SCI, 1993

Newsworthy and timely articles keep you up-to-date in your field.

MOLECULAR PHARMACOLOGY



Editor: **Raymond Dingledine, Ph.D.**
Emory University School of Medicine
Atlanta, Georgia

Is your special interest receptors and neurotransmitters...drug metabolism...antibiotic and anticancer drug actions...or other areas related to molecular basis of drug action? If so, you should be subscribing to **MOLECULAR PHARMACOLOGY**.

The editor's and editorial board's high standards ensure that the papers you read in **MOLECULAR PHARMACOLOGY** are on the cutting edge of research on drug action and selective toxicity at the molecular level. Original applications of biochemistry, biophysics, genetics, and molecular biology are juxtaposed with innovative pharmacologic research to elucidate basic problems in pharmacology and toxicology, including such areas as molecular mechanisms involved in drug receptor-effector coupling, xenobiotic metabolism, and antibiotic and anti-cancer drug action. Start your subscription today to ensure access to the most newsworthy papers in your field. *Monthly*

Cut out and send in the coupon or call toll-free to start your subscription immediately, **1-800-638-6423** from anywhere in the U.S. or Canada.



Williams & Wilkins
A WAVERLY COMPANY

YES! Enter my subscription.

Avoid future rate increases and ensure **uninterrupted** service—enter your multiyear subscription today!

MOLECULAR PHARMACOLOGY(monthly)

Individual: \$105/yr Institution: \$230/yr
(Please add \$30.00 outside the U.S.; Canada, also add 7% GST.)

New Subscription		Renewal
<input type="checkbox"/> 3 yrs	<input type="checkbox"/> 2 yrs	<input type="checkbox"/> 1 yr

Name _____

Address _____

City/State/Zip _____

Payment Options:

- Check enclosed (payable to Williams & Wilkins)
 Bill me American Express
 MasterCard VISA

Card # _____ Exp. date _____

Signature or P.O. # _____

MD subscribers must add state sales tax. Subscriptions outside the U.S. must be prepaid in U.S. dollars. In Japan, contact Igaku-Shoin, MYW, Ltd. (03) 5689-5400. Rates valid through October 31, 1995.

Please allow 8 weeks for delivery of your first issue. Surface mail delivery to countries outside the U.S. may take up to 16 weeks. Airmail rates available upon request.

Discounts available to members on all ASPET publications. SAVE 10% when ordering two. SAVE 15% when ordering three. SAVE 20% when ordering four.

Williams & Wilkins

P.O. Box 23291
Baltimore, Maryland 21203-9990

Broadway House
2-6 Fulham Broadway
London SW6 1AA England

MOL 55742

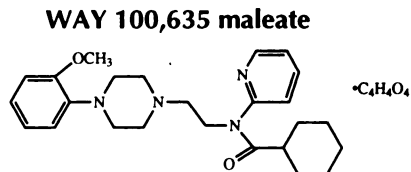
Printed in USA

J5042S ZMOE

RBI® THE RESEARCHER'S GOLD STANDARD

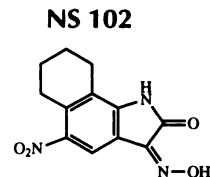
NEW PRODUCTS

EXCLUSIVE



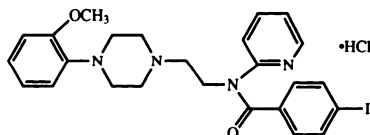
Highly selective 5HT_{1A} serotonin receptor antagonist
Cat. No. W-108

EXCLUSIVE



Competitive glutamate receptor antagonist with high selectivity for the low-affinity [³H]kainate binding site
Cat. No. N-179

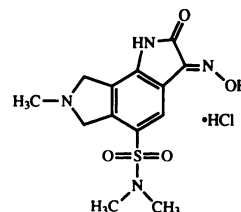
p-MPPI hydrochloride



Highly selective 5HT_{1A} serotonin receptor antagonist that penetrates the blood-brain barrier
Cat. No. M-204

NS 257 hydrochloride

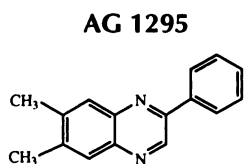
EXCLUSIVE



Selective, competitive AMPA antagonist with *in vivo* anticonvulsant activity

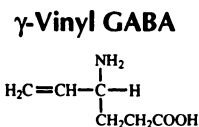
Cat. No. N-180

EXCLUSIVE



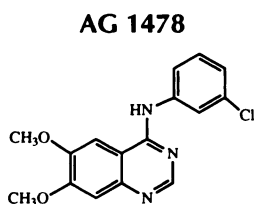
Selective platelet-derived growth factor receptor tyrosine kinase blocker
Cat. No. A-223

EXCLUSIVE



Selective GABA transaminase (GABA-T) inhibitor; anticonvulsant
Cat. No. V-110

EXCLUSIVE



Selective epidermal growth factor receptor blocker
Cat. No. A-222

Central Cannabinoid receptor, human recombinant (HEK-293)

A frozen aliquot of membranes from HEK-293 cells transfected with the human recombinant central cannabinoid receptor
Cat. No. C-217

M₂ Muscarinic receptor, human recombinant (CHO)

A frozen aliquot of membranes from CHO cells transfected with the human recombinant M₂ muscarinic receptor
Cat. No. M-195

RBI® RESEARCH BIOCHEMICALS INTERNATIONAL

One Strathmore Road, Natick, MA 01760-2447 USA
508-651-8151 • 800-736-3690 • Fax 508-655-1359 • 800-736-2480

DISTRIBUTORS - TELEPHONE

Australia, Arncliffe • 2-597-3688
Czech Republic, Olomouc • 68-551-7217
Denmark, Roedovre • 44-948822
France, Illkirch • 88-67-14-14

Germany, Köln • 221-497-2034
Hong Kong, Shatin • 649-9988
Israel, Jerusalem • 2-794951
Italy, Milano • 02-5088220
Japan, Tokyo • 03-5684-1622

Korea, Seoul • 2-945-2431
Norway, Oslo • 22-220411
Switzerland, Zurich • 01-312-1512
Taiwan, Taipei • 2-918-1206
United Kingdom, St. Albans • 01727-841414