

VOLUME 267 • NUMBER 2 • NOVEMBER 1993

JPETAB 267 (2) 567-1016 (1993)

ISSN 0022-3565

DEC 06 1993

MR. E. SMITH SCHWARTZ MEDICAL LIBRARY  
BRUNNEN KDALE HOSPITAL MEDICAL CENTER

# The Journal of PHARMACOLOGY

## AND EXPERIMENTAL THERAPEUTICS

*A Publication of The American Society  
for Pharmacology and Experimental Therapeutics  
Founded by John J. Abel—1909*

Edited for the Society by John A. Harvey



Published by Williams & Wilkins

# LAB ANIMAL RESEARCH EQUIPMENT

## TREMOR MONITOR

also Measures Ergometric Activity



- Uses computerized spectral analysis for tremor detection
- Measures ergometric activity
- Available for monitoring of one to eight animals

## RATS: TIDAL VOLUME/ RESPIRATION FREQUENCY



- Tidal volume
- Minute volume
- Inspiration/expiration times
- Maximum expiratory flow
- Accurate measurements of one to eight animals

## ECONOMICAL EXERCISER

with Air-Puff Stimulus



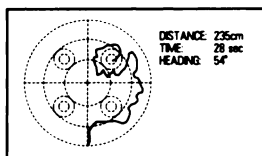
- Animal triggered air-puff promotes exercise
- Adjustable tread speed and grade
- Available with four or eight lanes

## EDUCATIONAL $\dot{V}O_2/\dot{V}CO_2$ ANIMAL METABOLIC SYSTEM



- Provides gas composition and flow information
- Data acquisition by RS-232
- Available with four or eight chambers for rats or mice

## WATER MAZE SOFTWARE



- New software for IBM-PC analyzes all important parameters of animal behavior in water maze
- Operates with the Videomex-V video tracking system

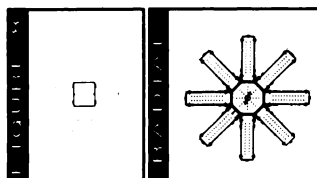
## ECONOMICAL ACTIVITY METERS

with GLP Compliant Software



- Separate ambulatory and non-ambulatory activity
- Can be grouped in large systems
- Use with standard molded animal cages

## FIGURE 8 & RADIAL MAZES



- Stainless Steel construction
- Equipped with IR beams
- 'Universal Maze Monitoring Software' collects, prints, and stores data

## VIDEOMEX-ONE

Video Tracking PC Interface



- Intelligent object/animal tracker
- Masks out interfering objects
- Raw x-y coordinate data is saved by an external computer for later analysis
- Animal activity software available

## END TIDAL $CO_2$ METER

for Rats and Mice



- Very low sample flow (5 and 20 cc/min)
- RS-232 output
- Printer output
- Up to 250 breaths/min

## HOTPLATE ANALGESIA METER



- Stable and Uniform platform temperature
- Adjustable platform temperature (40°C - 80°C)
- Data acquisition by RS-232
- Direct connection to any Epson compatible printer

## Columbus Instruments International Corporation

P.O. Box 44049 Columbus, Ohio 43204 USA

PH: (614) 276-0861 FAX: (614) 276-0529 Toll Free: 1-800-669-5011 TLX: 246514

**COPYRIGHT © 1993 BY THE AMERICAN SOCIETY FOR PHARMACOLOGY AND EXPERIMENTAL THERAPEUTICS**