

VOLUME 263 • NUMBER 2 • NOVEMBER 1992

JPETAB 263 (2) 413-904 (1992)

ISSN 0022-3565

MARIE SMITH SCHWARTZ MEDICAL LIBRARY  
BROOKDALE HOSPITAL MEDICAL CENTER

NOV 23 1992

**The Journal of**  
**PHARMACOLOGY**  
**AND EXPERIMENTAL THERAPEUTICS**

*A Publication of The American Society  
for Pharmacology and Experimental Therapeutics  
Founded by John J. Abel—1909*

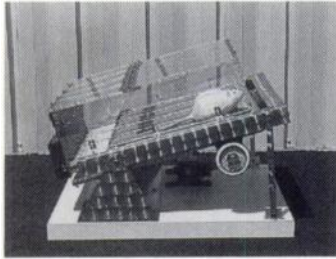
Edited for the Society by John A. Harvey



Published by Williams & Wilkins

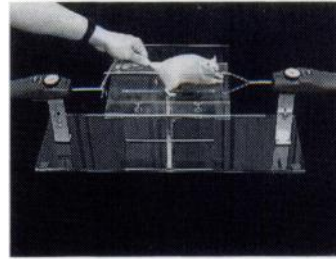
# LAB ANIMAL RESEARCH EQUIPMENT

## INEXPENSIVE EXERCISER



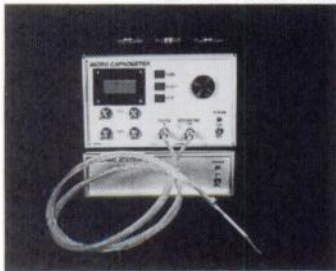
- \* For rats and mice -- 4-lane exerciser.
- \* Electronically controlled speed.
- \* Electric stimulation grids.

## GRIP STRENGTH METER for rats and mice



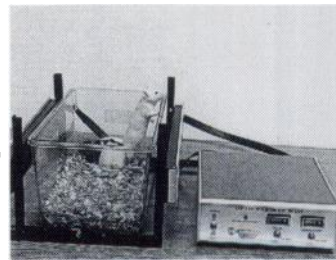
- \* Objectively measures animal deficiency in strength.

## END TIDAL CO<sub>2</sub> METER



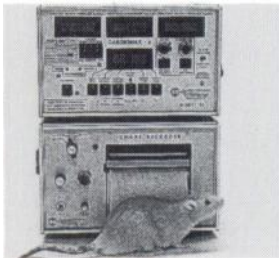
- \* Can be used for Rats
- \* Extremely small air sample flow -- 5ml/min.
- \* Analog output to most recorders.
- \* Digital display N<sub>2</sub>O measurements.

## INEXPENSIVE ANIMAL ACTIVITY METERS



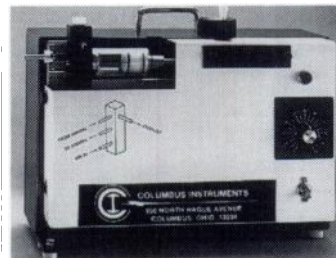
- \* "Mini" activity meter uses standard plastic cages.
- \* Can be used with rats or mice.
- \* 15 Infrared sensors.
- \* Separates ambulatory from total activity.
- \* Multi-cage system available w/ IBM-PC interface.

## CARDIAC OUTPUT FOR RATS



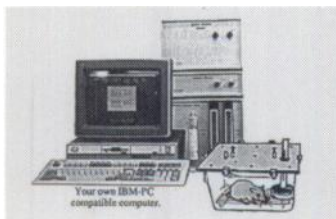
- \* Thermodilution method using 1/3 mm temp. microprobes.
- \* Can be interfaced to an IBM-PC.
- \* Measures: CO, S.V. BP, Mean Transit Time, Ejection Fraction and much more.

## VENTILATORS



- \* Mechanical (piston) positive pressure ventilators for rodents and larger animals.

## ECONOMICAL O<sub>2</sub>/CO<sub>2</sub> METABOLIC SYSTEM



- \* O<sub>2</sub> Consumption/CO<sub>2</sub> production computer (IBM-PC).
- \* Open-circuit indirect calorimeter.
- \* Completely computerized .
- \* Single channel.
- \* Also available-multi-channel

systems for rats, mice, bacteria, horses, and humans.

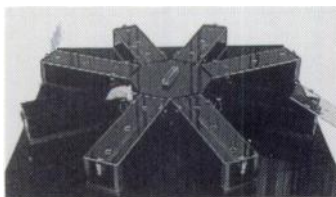
## 256 POINT THERMOMETER



- \* Interface to IBM-PC for 1 to 256 thermocouples.
- \* Variety of temp. probes (rectal, skin, implantable).
- \* Software provides graphics and real-time plotting.
- \* Also special software for Pyrogenic Activity studies.

*FDA registered for human use*

## MAZES -- "FIGURE 8" AND "RADIAL ARM"



- \* Computerized system with universal maze software (for IBM-PC) monitors interruption of 128 IR sensors.
- \* Data LOTUS 1-2-3 compatible.

## VIDEO TRACKERS FOR WATER MAZES



- \* Measures activity, distance traveled, pattern of movement, & rotations of multiple animals w/ 1 TV camera.
- \* Vertical activity (3-D) measurements w/ 2 cameras.
- \* Ideal for water maze, human and animal gait analysis.

For our complete catalog please contact: **Columbus Instruments International Corp.**

**P.O. Box 44049 Columbus, Ohio 43204 USA**

PH: (614) 488-6176 FAX: (614) 276-0529 TLX: 246514 Toll Free: 1-800-669-5011



COPYRIGHT © 1992 BY THE AMERICAN SOCIETY FOR PHARMACOLOGY AND EXPERIMENTAL THERAPEUTICS