

One of the top ranking journals in the field

PHARMACOLOGICAL REVIEWS

*Official Publication of the American Society for
Pharmacology and Experimental Therapeutics, Inc.*

Robert E. Stitzel, PhD, Editor
West Virginia University Medical Center

PHARMACOLOGICAL REVIEWS is a showcase for important review articles in your field, featuring longer papers on topics of high current interest. Recent articles include:

Selectivity in the Inhibition of Mammalian Cytochromes P-450 by Chemical Agents
MICHAEL MURRAY and GORDON F. REIDY

Cardiovascular Responses in Ageing: A Review
JAMES R. DOCHERTY

Experimental Models in Skin Pharmacology
MARTINE BOUCLIER, DANIEL CAVEY,
NICK KAIL, and CHRISTOPHER HENSBY

Pharmacology of Drugs that Alter Multidrug Resistance in Cancer
JAMES M. FORD and WILLIAM N. HAIT

Biochemical Pharmacology and Therapeutic Aspects of Thrombolytic Agents
R. FEARS

Antiepileptic Drugs: Pharmacological Mechanisms and Clinical Efficacy with Consideration of Promising Developmental Stage Compounds
MICHAEL A. ROGAWSKI and
ROGER J. PORTER

PHARMACOLOGICAL REVIEWS continues to publish the important, longer papers of interest to pharmacologists, physiologists, toxicologists, and biological chemists. No library serving the pharmacologist should be without a subscription.

To subscribe to **PHARMACOLOGICAL REVIEWS**, use the coupon below. Or for even faster service — CALL TOLL-FREE 1-800-638-6423 from anywhere in the U.S. or Canada.

Yes, enter my subscription to **Pharmacological Reviews**. (Quarterly)

- Individual \$50/year
 Institutional \$90/year
 In-training* \$35/year

*Institution/status _____
(Add \$15 outside U.S.)

Avoid future rate increases and ensure uninterrupted service, enter your subscription for:

- 3 years 2 years 1 year
 New subscription Renewal

Name _____

Address _____

City/State/Zip _____

Payment options:

- Check enclosed (payable to Williams & Wilkins)
 Bill me Charge: American Express
 MasterCard VISA

PTS 52766

Card # _____ Exp. date _____

Signature or P.O. # _____

Maryland subscribers, please add 5% sales tax. Canadian subscribers, please add 7% GST. Subscriptions from outside the U.S. must be prepaid in U.S. dollars only. Rates valid until October 31, 1991. Please allow 10 weeks for delivery of your first issue. Surface mail to countries outside the U.S. may take up to 16 weeks. Airmail rates available upon request.



Williams & Wilkins
P.O. Box 23291
Baltimore, MD 21203-9990
Broadway House
2-6 Fulham Broadway
London SW6 1AA England

Return order form to Williams & Wilkins, or call toll-free 1-800-638-6423 from anywhere in the U.S. or Canada.

J1021S01

INFORMATION TO SUBSCRIBERS

THE JOURNAL OF PHARMACOLOGY AND EXPERIMENTAL THERAPEUTICS is issued monthly. Four volumes are published each year. Each volume contains three numbers.

Correspondence concerning business matters should be addressed to Williams & Wilkins, 428 East Preston St., Baltimore, MD 21202-3993 U.S.A.

Annual Subscription Rates—U. S. A. AND POSSESSIONS: personal, \$170.00; institutional, \$285.00; single copy, \$18.00. FOREIGN: personal, \$235.00; institutional, \$350.00; single copy, \$22.00. (Prices subject to change.) Institutional (multiple reader) rate applies to libraries, schools, hospitals, clinics, group practices, and federal, commercial, and private institutions and organizations. Foreign subscribers who wish to have issues sent by airmail may inquire of the publisher for the additional cost. The GST Tax Number for Canadian subscribers is 123394371.

Change of address: Publisher must be notified 60 days in advance. Journals undeliverable because of incorrect address will be destroyed. Duplicates can be obtained (if available) from the publisher at the regular price of single issues.

New subscriptions and renewals are entered to begin with the January or July issue.

To avoid a break in your series, subscriptions should be renewed promptly. The publisher cannot guarantee to supply back issues on belated renewals.

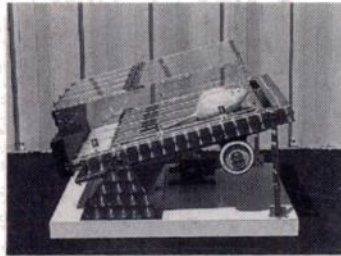
Reprints of individual articles are available *only* from authors.

Microfilm. For availability, inquire of Williams & Wilkins.

WILLIAMS & WILKINS
BALTIMORE, MD 21202-3993 U.S.A.

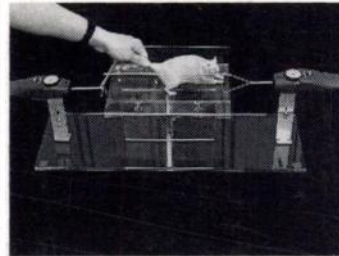
LAB ANIMAL RESEARCH EQUIPMENT

INEXPENSIVE EXERCISER



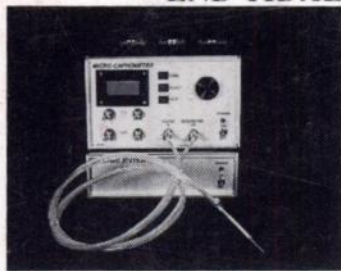
- * For rats and mice -- 4-lane exerciser.
- * Electronically controlled speed.
- * Electric stimulation grids.

GRIP STRENGTH METER for rats and mice



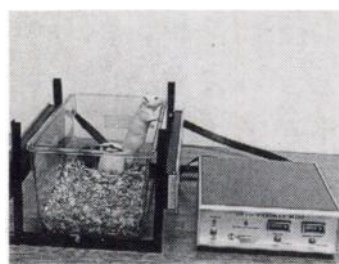
- * Objectively measures animal deficiency in strength.

END TIDAL CO₂ METER



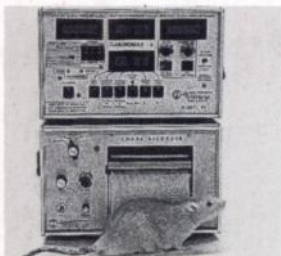
- * Can be used for Rats
- * Extremely small air sample flow -- 5ml/min.
- * Analog output to most recorders.
- * Digital display N₂O measurements.

INEXPENSIVE ANIMAL ACTIVITY METERS



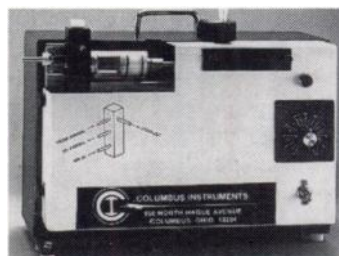
- * "Mini" activity meter uses standard plastic cages.
- * Can be used with rats or mice.
- * 15 Infrared sensors.
- * Separates ambulatory from total activity.
- * Multi-cage system available w/ IBM-PC interface.

CARDIAC OUTPUT FOR RATS



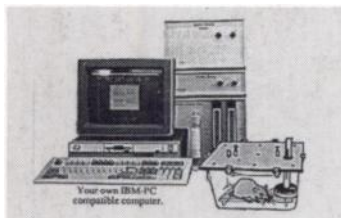
- * Thermodilution method using 1/3 mm temp. microprobes.
- * Can be interfaced to an IBM-PC.
- * Measures: CO, S.V. BP, Mean Transit Time, Ejection Fraction and much more.

VENTILATORS



- * Mechanical (piston) positive pressure ventilators for rodents and larger animals.

ECONOMICAL O₂/CO₂ METABOLIC SYSTEM



Your own IBM-PC compatible computer.

- * O₂ Consumption/CO₂ production computer (IBM-PC).
- * Open-circuit indirect calorimeter.
- * Completely computerized.
- * Single channel.
- * Also available-multi-channel

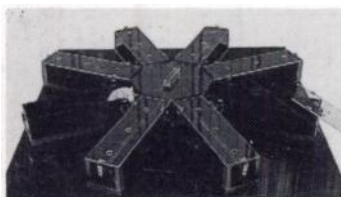
256 POINT THERMOMETER



FDA registered for human use

- * Interface to IBM-PC for 1 to 256 thermocouples.
- * Variety of temp. probes (rectal, skin, implantable).
- * Software provides graphics and real-time plotting.
- * Also special software for Pyrogenic Activity studies.

MAZES -- "FIGURE 8" AND "RADIAL ARM"



- * Computerized system with universal maze software (for IBM-PC) monitors interruption of 128 IR sensors.
- * Data LOTUS 1-2-3 compatible.

VIDEO TRACKERS FOR WATER MAZES



- * Measures activity, distance traveled, pattern of movement, & rotations of multiple animals w/ 1 TV camera.
- * Vertical activity (3-D) measurements w/ 2 cameras.
- * Ideal for water maze, human and animal gait analysis.

For our complete catalog please contact: **Columbus Instruments International Corp.**

P.O. Box 44049 Columbus, Ohio 43204 USA

PH: (614) 488-6176 FAX: (614) 276-0529 TLX: 246514 Toll Free: 1-800-669-5011