

VOLUME 251 • NUMBER 3 • DECEMBER 1989

JPETAB 251 (3) 797-1262 (1989)

ISSN 0022-3565

The Journal of
PHARMACOLOGY
AND EXPERIMENTAL THERAPEUTICS

*A Publication of The American Society
for Pharmacology and Experimental Therapeutics
Founded by John J. Abel—1909*

Edited for the Society by Eva King Killam



Published by Williams & Wilkins

In the rat race, the competition is for second.



Charles River Laboratories' CD[®] rat is our original product. It not only started a company, some say it started a whole industry. That's why for years the competition has attempted to gnaw at our market share.

Today, you can choose from VAF/PLUS[™] or COBS[®] CD rats. Both are the International Standard[®] backed by Charles River personnel and facilities. And both offer the complete health documentation you expect. Including, upon request, data from other studies employing our CD rats. Our world-wide supply is available for delivery.

In the rat race, there's no reason to deal with anyone but the top dog.

For more information, call 1-800-LAB RATS. Or write Charles River Laboratories, Inc., 251 Ballardvale St., Wilmington, MA 01887-0630.

The Journal of PHARMACOLOGY AND EXPERIMENTAL THERAPEUTICS

*A Publication of The American Society
for Pharmacology and Experimental Therapeutics*

Founded by John J. Abel 1909

EDITOR

Eva King Killam

ASSISTANT EDITOR

Mannfred A. Hollinger

EDITORS FOR SPECIFIC FIELDS

Analgesia and Drug Abuse

William L. Dewey
Billy Martin

Autonomic Pharmacology

Robert R. Ruffolo, Jr.
Robert E. Stitzel

Behavioral Pharmacology

John A. Harvey

Cardiovascular Pharmacology

Leslie E. Bailey
Henry R. Besch, Jr.
Theodore M. Brody
Sue Piper Duckles

Cellular Pharmacology

Toshio Narahashi
Ronald P. Rubin
George B. Weiss

Chemotherapy

H. George Mandel

Developmental Pharmacology

Bernard L. Mirkin

Drug Metabolism and Disposition

Edward Bresnick
Jordan L. Holtzman

Endocrine Pharmacology

Paula H. Stern

Gastrointestinal Pharmacology

Thomas F. Burks

Immunopharmacology

Sydney Spector

Neuropharmacology

Edmund G. Anderson
David B. Bylund
S. J. Enna
Charles O. Rutledge

Prostaglandins and Leukotrienes

Guy C. Le Breton
John C. McGiff

Pulmonary Pharmacology

Mannfred A. Hollinger

Renal Pharmacology

William O. Berndt

Toxicology

Curtis D. Klaassen

EDITORIAL ADVISORY BOARD

Margaret Acara
Martin W. Adler
Edson X. Albuquerque
Julius C. Allen
James B. Appel
Lewis Aronow
William D. Atchison
Albert J. Azzaro
Robert L. Balster
Paul Bass
Michael A. Beaven
Donald M. Bers
John A. Bevan
C. Paul Bianchi
David A. Blake
Alan S. Bloom
Floyd E. Bloom
Peter G. Bradford
Carl K. Buckner
Theodore J. Cicero
Doris H. Clouet
Marlene L. Cohen
Charles R. Craig
Luigi X. Cubeddu
E. E. Daniel
William C. de Groat
Louis Diamond
Gerald F. DiBona
Robert J. Dinerstein
Walter R. Dixon
J. W. Downie
Linda Dykstra

Hugh L. Evans
Jerry M. Farley
Harold Feinberg
Gregory D. Fink
Stephen K. Fisher
Garret A. FitzGerald
Ray W. Fuller
Timothy S. Gaginella
Gerard L. Gebber
James W. Gibb
C. Norman Gillis
Shri N. Giri
Frank R. Goodman
Thomas P. Green
Garrett J. Gross
R. Adron Harris
Richard J. Head
J. Paul Hieble
Stephen G. Holtzman
Jerry B. Hook
E. H. Jeffery
Robert M. Joy
Alain F. Junod
George J. Kaloyanides
Alexander G. Karczmar
Terry Kenakin
Conan Kornetsky
Edwin A. Kroeger
David D. Ku
Suzanne G. Laychock
Tony J.-F. Lee

Roberto Levi
George E. Lindenmayer
Horace H. Loh
Benedict R. Lucchesi
K. U. Malik
Thomas A. McCalden
Robert B. McCall
Donald E. McMillan
W. H. Morse
Hasan Mukhtar
Kevin Mullane
L. Charles Murrin
Jose M. Musacchio
Allen H. Neims
Jon A. Norman
Robert F. O'Dea
Achilles J. Pappano
Leslie V. Parise
Gavril W. Pasternak
William A. Pettinger
Larissa A. Pohorecky
Garth Powis
Donald V. Priola
Russell A. Prough
David Raeburn
Arthur Raines
C. R. Ross
Arnold Schwartz
Lewis S. Seiden
Paul J. Silver
David J. Smith

Roger P. Smith
Roger D. Speakman
Janice L. Stickney
John L. Sutko
Boris Tabakoff
A. E. Takemori
David A. Taylor
Robert E. Ten Eick
Thomas R. Tephly
Richard E. Tessel
Martin J. M. C. Thoolen
Pieter B. M. W. M. Timmermans
Myron L. Toews
Theodore J. Torphy
U. Trendelenburg
Norman J. Uretsky
Paul M. Vanhoutte
Ralph Vinegar
Larry A. Walker
Martin A. Wasserman
R. Clinton Webb
I. M. Weiner
Richard M. Welch
Grant R. Wilkinson
Michael Williams
Martin M. Winbury
Raymond J. Winquist
Barry B. Wolfe
Henry I. Yamamura
Ben G. Zimmerman

BOARD OF PUBLICATIONS TRUSTEES

William W. Fleming, *Chairman*: Arthur J. Atkinson, William A. Catterall, Marlene L. Cohen, Joel G. Hardman, Eva King Killam, Horace Loh, Marcus M. Reidenberg, Robert E. Stitzel, Vincent G. Zannoni

EXECUTIVE OFFICER OF THE SOCIETY

Kay Croker

THE JOURNAL OF PHARMACOLOGY AND EXPERIMENTAL THERAPEUTICS (ISSN 0022-3565) is an official publication of The American Society for Pharmacology and Experimental Therapeutics and is published monthly by Williams & Wilkins, 428 E. Preston Street, Baltimore, MD 21202-3993. Second class postage paid at Baltimore, MD and at additional mailing offices. POSTMASTER: Send address changes to THE JOURNAL OF PHARMACOLOGY AND EXPERIMENTAL THERAPEUTICS, 428 E. Preston St., Baltimore, MD 21202-3993. Indexed by *Current Contents* and *Index Medicus*. Subscription rates \$160.00 (\$215.00 foreign, \$337 Japan); institutions \$260.00 (\$315 foreign, \$437.00 Japan) single copy \$18.00 (\$22.00 foreign). (Japanese rates include air freight.) Prices are subject to change. Copyright © 1989 by The American Society for Pharmacology and Experimental Therapeutics.

BIO-TECH EQUIPMENT

For full size catalogue please contact:

COLUMBUS INSTRUMENTS PO Box 44049 Columbus, Ohio 43204 USA Phone (614) 488-6176 Fax (614) 276-0529 TLX 246514

VIDEO IMAGE ANALYZERS

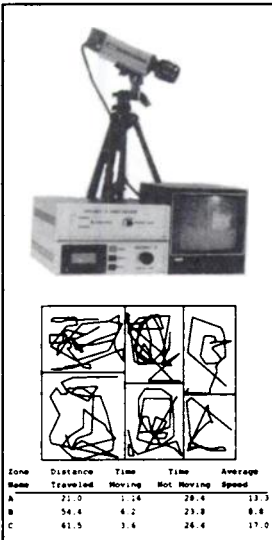
for measuring activity of animals, fish and insects

Videomex-V (black & white system) Videomex-X (color system, tracking six (6) color-marked animals)

The **VIDEOMEX** animal behavior measuring devices are very versatile. They can be used to measure the activity of mice, rats, fish, insects and larger animals including monkeys, horses and humans. The Videomex's measurements are far superior to the infrared light beam method because measurements are taken from above to avoid "mutual shadow" errors. The same software will also work with any size animal or cage. It can simultaneously measure multiple cage activity and in the case of the Videomex-X will separately monitor the activity of each animal in a group.

SOFTWARE (Videomex-V)

1. Program for measuring the motion of multiple objects moving across multiple user-defined zones.
2. Program for monitoring rotations of a single animal combined with the pattern of movement and distance traveled.

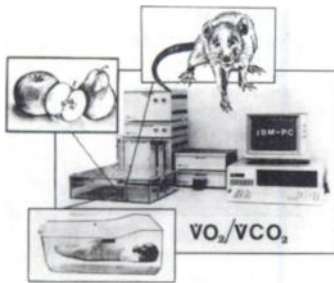


Example: Multiple Object Distance Traveled in Multiple Zones Program Printout.

3. Program for measuring "social contact" (time of contact between animals). Can be combined with the total activity measurements of both animals.
4. Program for monitoring the number of visits, time spent and pattern of movements of a single animal moving across many user-defined zones (e.g. maze).
5. Program for counting the number of animals present at periodic intervals in user-defined zones.
6. Special "water maze" program for measuring the pattern of movement and the distance traveled to the "goal" platform.
7. Program for measuring the distance traveled (in cm.) and pattern of movements of multiple objects located in multiple user-defined zones (e.g. multiple animals located in separate cages - one animal per cage).

O₂/CO₂ RESPIROMETER

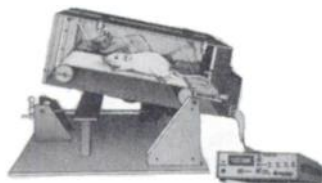
measuring O₂/CO₂ rate of change down to 0.2 μL/hour



- ★ Far superior to Warburg Apparatus.
- ★ For animals, insects, bacterial and tissue cultures, fermentation, photosynthesis, fruits, vegetables etc.
- ★ Operates with 1 to 4 measuring chambers (100 ml to 10 liters).
- ★ Prints and stores results in user-selected intervals using IBM-PC/XT compatible computer.
- ★ Two systems available:
 1. Open flow "Oxymax" system for lab animals.
 2. Semi-closed "Micro-Oxymax" for minuscule O₂/CO₂ uptake/production.
- ★ 24 hour unattended operation.

ANIMAL EXERCISER

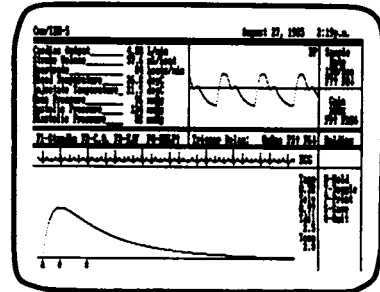
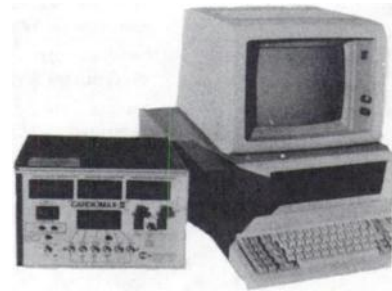
allows O₂/CO₂ measurements



- ★ 2, 4 or 6 Air-tight animal compartments
- ★ Adjustable speed and tilt
- ★ Can be combined with Oxygen Consumption Computer for O₂/CO₂ measurements

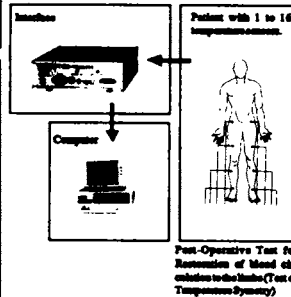
CARDIAC OUTPUT COMPUTER+ IBM-PC FOR HUMANS AND RATS

CARDIOMAX plus an IBM-PC Computer measures, prints on printer and stores on disk for future recall: *Cardiac Output *Stroke Volume *Heart Rate *Systolic, Diastolic, Mean Blood Pressures *Blood and Injectate Temperatures *Graphic pictures of Dilution Curve *Blood Pressure, dP/dt, and ECG Waveforms *Calculates and Prints Dilution Curves' Appearance, Elevation, Mean Concentration and Mean Dilution Times.



*Helps calculate EJECTION FRACTION *Also can function as an automatic vital parameters data logger * Can be equipped with an automatic thermomodulation injector *Cardiac Output measuring range from milliliters to hundreds of liters *Can be used in human as well as animal research applications *Supplied with all needed software.

COMPUTERIZED THERMOMETER



- ★ 16 Channel Thermocouple Interface (RS-232) with software to IBM-PC and Apple-IIe compatibles.
- ★ FDA registered for human use.
- ★ Accuracy 0.1 °C Resolution 0.015 °C. Range 0° to 50° for biological applications (Other ranges from -200 °C to 1000 °C are available).
- ★ Electrical Isolation of inputs to 2000 volts.
- ★ A wide variety of medical probes available (Intravenous, implantable, skin, rectal, oral, needle etc.)



COLUMBUS INSTRUMENTS

PO Box 44049 Columbus, Ohio 43204 USA

PH(614) 488-6176 FAX (614) 276-0529 TLX 246514

AUTHOR INDEX

- Abraham, S., 1166
 Ackerman, D. M., 1113
 Aharony, D., 846
 Allescher, H.-D., 1134
 Amenta, F., 1237
 Armstead, W. M., 1012
 Atkinson, A. J., Jr., 1026
 Baker, F. E., 894
 Ballatori, N., 1069
 Barefoot, D. S., 962
 Barnes, P. J., 1204
 Beatch, G. N., 1166
 Berlan, M., 1187, 1193
 Bickel, W. K., 1053
 Bigelow, G. E., 1053
 Blandina, P., 803
 Bobker, D. H., 840
 Bolt, G. R., 1147
 Brady, M. M., 1113
 Buciak, J., 821
 Budai, D., 852
 Busija, D. W., 1012
 Butler, B. T., 878
 Cadman, E. D., 1039
 Caltabiano, S., 1128
 Carbone, R., 1142
 Carpenter-Deyo, L., 983
 Carretero, O. A., 817
 Catanese, C. A., 846
 Charles, D., 956
 Christ, D. D., 949
 Cohen, M. L., 1006
 Craddock-Royal, B., 803
 Cubeddu, L. X., 1160
 Cushing, D. J., 943
 Daniel, E. E., 1134
 Dazats, M., 1187, 1193
 Deadwyler, S. A., 870
 DeLander, G. E., 1090
 de Lannoy, I. A. M., 1211
 DeLeonardis, M., 929
 Do, U. H., 888
 Dobbins, S. S., 894
 Duckles, S. P., 852
 El-Fakahany, E. E., 992
 Endou, H., 1155
 Endres, W., 1181
 Epstein, P. M., 810
 Erion, M. D., 956
 Evans, T. W., 1204
 Eylers, J. P., 894
 Falcone, R. C., 846
 Forray, C., 992
 Foster, T. C., 870
 Fox, J. E. T., 1134
 Franklin, P. H., 1229
 Frederiksen, J. W., 1026
 Frederiksen, M. C., 1026
 Fryer, A. D., 992
 Fujimoto, J. M., 1045
 Fuller, R. W., 1006
 Furukawa, Y., 797
 Gellai, M., 1128
 Gibb, J. W., 901
 Gilligan, J. P., 956
 Goldfarb, J., 803
 Gordon, J. C., 962
 Green, J. P., 803
 Greene, M. A., 833
 Grover, G. J., 1020
 Gussio, R. P., 1104
 Hampson, R. E., 870
 Hanson, G. R., 901
 Hegde, S. S., 1237
 Henderson, E. G., 810
 Henningfield, J. E., 976
 Henry, D. J., 833
 Herning, R. I., 976
 Herzer, W. A., 858
 Hintze, T., 929
 Hoegler, C., 929
 Hoffmann, I. S., 1160
 Holohan, P. D., 937
 Holtman, J. R., Jr., 878
 Hornfeldt, C. S., 1064
 Huiatt, K. R., 937
 Hutchison, A. J., 888
 Ishida, H., 817
 Itoh, H., 1147
 Jackson, E. K., 858, 909
 Jarvis, M. F., 888
 Jin, C., 969
 Kafiluddi, R., 1120
 Kai, H., 1174
 Kanaide, H., 1174
 Kawagishi, M., 1199
 Kennedy, R. H., 1120
 Khosla, M. C., 1076
 Kinter, L. B., 1128
 Kiritsy-Roy, J. A., 1096
 Koehn, J. A., 956
 Kostolanska, F., 1134
 Kusiak, J. W., 878
 Lafontan, M., 1187, 1193
 Lappi, S. E., 894
 Larson, A. A., 1064
 Lawson, J. A., 858
 Lederis, K., 1147
 Lee, N. H., 992
 Leffler, C. W., 1012
 Levy, G., 827
 Li, P., 909
 Liebson, I. A., 1053
 Liu, S. F., 1204
 Lokhandwala, M. F., 1237
 London, E. D., 1083
 MacCannell, K. L., 1147
 MacLean, A. G., 1113
 MacLeod, B. A., 1166
 Majewska, M. D., 1083
 Marquis, K. L., 1104
 Marson, L., 1096
 Martin, P., 797
 Matsuda, L. A., 901
 Maura, G., 1142
 McCormack, D. G., 1204
 McIntyre, J., 929
 McMahan, E. G., 1000
 McMartin, C., 956
 Mehta, P., 1000
 Miller, M. J. S., 956
 Mirro, R., 1012
 Miyanoshta, A., 1155
 Moreland, S., 1020
 Moreton, J. E., 1104
 Murray, T. F., 1229
 Mustafa, S. J., 943
 Nakamura, M., 1174
 Navarro, H. A., 894
 Needleman, P., 929
 Nespeca, R., 1211
 Nishimura, H., 1076
 Okada, Y., 1199
 Olins, G. M., 1000
 Palmesino, R. A., 956
 Palomo, M. A., 1000
 Pang, K. S., 1211
 Paquette, N. C., 1104
 Partridge, W. M., 821
 Parham, C. S., 1020
 Parli, C. J., 1006
 Perel, J. M., 922
 Piasek, M. T., 878
 Pickworth, W. B., 976
 Pinkus, L. M., 962
 Pitha, J., 878
 Post-Munson, D. J., 810
 Preston, K. L., 1053
 Rady, J. J., 1045
 Raiteri, M., 1142
 Reynolds, L. S., 810
 Ricci, A., 1237
 Rockhold, R. W., 969
 Ross, C. R., 937
 Roth, R. A., 983
 Rovati, L. A., 1134
 Ruo, T. I., 1026
 Sabouni, M. H., 943
 Sarbin, N. S., 962
 Saulnier-Blache, J.-S., 1187, 1193
 Schulz, R., 888
 Schwartz, J. B., 1032
 Scicli, A. G., 817
 Sedek, G. S., 34
 Seidler, F. J., 894
 Seifen, E., 1120
 Shapiro, J., 929
 Sharif, R., 956
 Sheiner, L. B., 1032
 Shen, K.-Z., 840
 Shih, S.-R., 1026
 Sills, M. A., 888
 Simpson, L. L., 1223
 Slep, P. G., 1020
 Slotkin, T. A., 894
 Smith, T. M., 1113
 Sokol, P. P., 937
 Somogyi, G. T., 922
 Spuler, A., 1181
 Stallone, J. N., 1076
 Surprenant, A., 840
 Takayama, H., 1083
 Talmaciu, R. K., 1160
 Tamburini, P. P., 956
 Tanaka, H., 1199
 Taouis, M., 1187, 1193
 ten Bruggencate, G., 1181
 Terada, M., 1155
 Tokiwa, T., 1199
 Triguero, D., 821
 Tripp, E. D., 1229
 Truong, A. T., 1069
 Uyehara, C. F. T., 1128
 Uzan, A., 1187, 1193
 Van Loon, G. R., 1096
 Verosky, M., 884
 Verotta, D., 1032
 Vickroy, T. W., 1039
 Vu, H. Q., 852
 Vulliemoz, Y., 884
 Wahl, J. J., 1090
 Walker, M. J. A., 1166
 Walle, T., 949
 Wallick, D. W., 797
 White, F. J., 833
 Williams, J. T., 840
 Williams, M., 888
 Zeballos, G., 929
 Zhang, G., 1229
 Zhi, J., 827



BRISTOL-MYERS SQUIBB AWARD FOR DISTINGUISHED ACHIEVEMENT IN NEUROSCIENCE RESEARCH

Bristol-Myers Squibb Company presents an annual award to a scientist making an outstanding contribution in neuroscience research. Candidates for the award are to be nominated by medical schools, hospitals and neuroscience research centers. Previous award winners include Dr. Julius Axelrod, National Institute of Mental Health; Dr. Arvid Carlsson, University of Göteborg; Dr. Paul Greengard, The Rockefeller University; Dr. Tomas Hökfelt, Karolinska Institute; Dr. Walle J. H. Nauta, Massachusetts Institute of Technology; and Dr. T. P. S. Powell, University of Oxford.

AWARD: \$50,000 U.S.

Deadline for Receipt of Nominations: February 16, 1990

Announcement of Award Recipient: June, 1990

SELECTION COMMITTEE

GEORGE K. AGHAJANIAN, M.D.	<i>Yale University School of Medicine and Ribicoff Research Facilities</i>
IRA B. BLACK, M.D.	<i>Cornell University Medical College— New York Hospital</i>
CARL W. COTMAN, PH.D.	<i>University of California, Irvine</i>
RAYMOND J. DINGLEDINE, PH.D.	<i>University of North Carolina at Chapel Hill</i>
FRED H. GAGE, PH.D.	<i>University of California, San Diego</i>
SOLOMON H. SNYDER, M.D.	<i>The Johns Hopkins University School of Medicine</i>

Rules and official nomination forms are available from: Secretary, Award Committee
Bristol-Myers Squibb Award for Distinguished Achievement in Neuroscience Research
345 Park Avenue, 4100, New York, NY 10154.

DIRECTOR OF CLINICAL TRIALS

The Liposome Company, a growing biotechnology firm specializing in novel, lipid-based drug delivery systems, is seeking a Director to manage its Phase I and Phase II clinical trials as well as the possibility of handling Phase III studies.

Responsibilities include choosing clinical sites, writing the clinical protocols, clinical monitoring and data analysis contributing to IND submissions, and playing an active role in clinical strategies.

The successful candidate will possess a Ph.D in Pharmacy or an M.D. with 3+ years of clinical experience in Oncology or infectious diseases.

The Liposome Company is an equal opportunity employer that offers competitive salaries, comprehensive benefits and a creative work environment for professional performance and growth. Qualified candidates should send their resumes to:

The Liposome Company Inc

ATTN:
Ms. Debra Pascale
Human Resources
Department.

One Research Way Princeton, NJ 08540



SUBSCRIPTION QUESTIONS OR PROBLEMS?

Call us on our **free** line, 1-800-638-6423 to get your problem solved. In Maryland call 1-800-638-4007.

We can help you most efficiently if the mailing label from your latest issue is in front of you when you call. If the problem concerns your payment, please have your canceled check in front of you so that we can solve the problem over the phone. For speedier service, refer to the six digit number at the end of the top line of your address label.

Subscription Fulfillment Department
Williams & Wilkins
428 East Preston Street
Baltimore, Maryland 21202



SAY IT WITH STYLE!



AMA MANUAL OF STYLE

The one to consult

Whether it's a multi-volume work or a short article, you'll find *the write stuff* in the AMA Manual of Style.

This 8th Edition, a major revision, is the *standard* among medical publishers. All major aspects of manuscript preparation are covered in five sections which outline: • Preparing an article for publication • Style • Terminology • Measurement and Quantitation • Technical Information and Bibliography.

You'll find everything you need to make your article a success including: • Legal and Ethical Matters • Grammar • Punctuation • Word Use • Foreign Words and Phrases • Diacritics • Abbreviations • Units of Measure • Numbers and Percentages • Mathematics • Statistics • Production and Printing Terms • Editing and Proofreading Marks • Eponyms • Nomenclature • Greek Alphabet • Virus Names • SI Units and Conversion Tables • Expanded Collection of Graphs and Charts • Bibliography • Resources for On-Line Databases.

Next time you have a question about making your medical writing more clear, concise and accurate, be ready with one simple answer — the AMA Manual of Style. Order your copy today!

1988/377 pp/4351-X/\$24.95

Want it faster? Call **FREE**
1-800-638-0672 from anywhere in the
U.S. Maryland residents call 528-4221
COLLECT.



Yes, send me ___ copies of AMA Manual of Style (4351-X) at \$24.95 per copy. If not completely satisfied, I may return the book within 30 days at no further obligation (US only).

Payment Options

Save postage and handling charges by enclosing your payment or charging your order.

Check enclosed Bill me VISA MasterCard Am Ex

Card # _____ Exp. Date _____

Signature/P.O. # _____

Name _____

Address _____

City/State/Zip _____

Williams & Wilkins 428 East Preston Street, Baltimore, MD 21202

tubular transport of morphine and morphine ethereal sulfate in the chicken. J. Pharmacol. Exp. Ther. **172**: 224-229, 1970.
 WAUGH, W. H. AND BEALL, P. T.: Simplified measurement of p-aminohippurate and other arylamines in plasma and urine. Kidney Int. **5**: 429-436, 1974.
 WINSLOW, R. M., SWENBERG, M.-L., BERGER, R. L., SHRAGER, R. I., LUZZANA, M., SAMAJA, M. AND ROSSI-BERNARDI, L.: Oxygen equilibrium curve of normal

human blood and its evaluation by Adair's equation. J. Biol. Chem. **252**: 2331-2337, 1977.

Send reprint requests to: Dr. K. S. Pang, Faculty of Pharmacy, University of Toronto, 19 Russell St., Toronto, Ontario, Canada M5S 2S2.

U.S. Postal Service STATEMENT OF OWNERSHIP, MANAGEMENT AND CIRCULATION <small>Required by 39 U.S.C. 3685</small>		
1A Title of Publication JOURNAL OF PHARMACOLOGY & EXPERIMENTAL THERAPEUTICS	1B PUBLICATION NO. 0 0 2 2 3 5 6 5	2 Date of Filing 10/1/89
3 Frequency of Issue Monthly	3A No. of Issues Published Annually 12	3B Annual Subscription Price \$150.00
4 Complete Mailing Address of Known Office of Publication (Street, City, County, State and ZIP+4 Code) (Not printer)		
428 East Preston Street, Baltimore, Maryland 21202-3993		
5 Complete Mailing Address of the Headquarters of General Business Offices of the Publisher (Not printer)		
428 East Preston Street, Baltimore, Maryland 21202-3993		
6 Full Names and Complete Mailing Address of Publisher, Editor, and Managing Editor (This area MUST NOT be blank)		
Publisher (Name and Complete Mailing Address) Williams & Wilkins, 428 E. Preston St., Baltimore, MD 21202-3993		
Editor (Name and Complete Mailing Address) Dr. Eva King Killam, Dept. of Pharmacology, University of California, Davis, CA 95616		
Managing Editor (Name and Complete Mailing Address)		
7 Owner (If owned by a corporation, its name and address must be stated and also immediately thereunder the names and addresses of stockholders owning or holding 1 percent or more of total amount of stock. If not owned by a corporation, the names and addresses of the individual owners must be given. If owned by a partnership or other unincorporated firm, its name and address, as well as that of each individual must be given. If the publication is published by a nonprofit organization, its name and address must be stated.) (This area must be completed)		
Full Name	Complete Mailing Address	
American Society for Pharmacology and Experimental Therapeutics	9650 Rockville Pike Bethesda, MD 20814	
8 Known Bondholders, Mortgagees, and Other Security Holders Owning or Holding 1 Percent or More of Total Amount of Bonds, Mortgages or Other Securities. (If there are none, so state)		
NONE		
9 For Completion by Nonprofit Organizations Authorized to Mail at Special Rates (39 USC 3622 and 3626). The purpose, function, and nonprofit status of this organization and the exempt status for Federal income tax purposes (check one)		
<input checked="" type="checkbox"/> Has Not Changed During Preceding 12 Months <input type="checkbox"/> Has Changed During Preceding 12 Months (If changed, publisher must submit explanation of change with this statement)		
10 Extent and Nature of Circulation (See instructions on reverse side)	Average No. Copies Each Issue During Preceding 12 Months	Actual No. Copies of Single Issue Published Nearest to Filing Date
A Total No. Copies (Net Press Run)	3654	3137
B Paid and/or Requested Circulation *SEE BELOW	473	467
1 Sales through dealers and carriers, street vendors and counter sales		
2 Mail Subscription (Paid and/or requested)	224	2150
C Total Paid and/or Requested Circulation (Sum of B1 and B2)	2687	2617
D Free Distribution by Mail, Carrier or Other Means (Samples, Complimentary, and Other Free Copies)	208	208
E Total Distribution (Sum of C and D)	2895	2825
F Copies Not Distributed	759	312
1 Office use, left over, unaccounted, spoiled after printing		
2 Return from News Agents	NONE	NONE
G TOTAL (Sum of E, F1 and F2 - should equal net press run shown in A)	3654	3137
11 I certify that the statements made by me above are correct and complete		Signature and Title of Editor, Publisher, Business Manager, or Owner <i>Alma J. Wilks</i> Publisher