

# The Journal of PHARMACOLOGY AND EXPERIMENTAL THERAPEUTICS

*A Publication of The American Society  
for Pharmacology and Experimental Therapeutics*

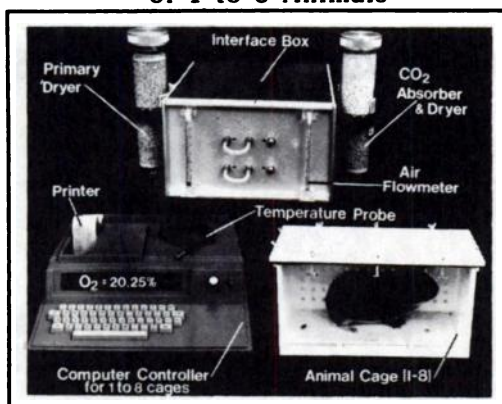
Founded by John J. Abel 1909

<b>Editor</b>	Eva King Killam		
<b>Assistant Editor</b>	Mannfred A. Hollinger		
<b>Editors for Specific Fields</b>	<i>Analgesia and Drug Abuse</i> Joseph Cochin <i>Autonomic Pharmacology</i> Robert E. Stitzel <i>Behavioral Pharmacology</i> John A. Harvey <i>Cardiovascular Pharmacology</i> Henry R. Besch, Jr. Theodore M. Brody Donald V. Priola <i>Cell Pharmacology</i> Toshio Narahashi George B. Weiss	<i>Chemotherapy</i> H. George Mandel <i>Developmental Pharmacology</i> Bernard L. Mirkin <i>Drug Metabolism and Disposition</i> Edward Bresnick <i>Endocrine Pharmacology</i> Paula H. Stern <i>Gastrointestinal Pharmacology</i> Thomas F. Burks	<i>Immunopharmacology</i> Sydney Spector <i>Neuropharmacology</i> S. J. Enna A. James Hance Charles O. Rutledge <i>Pulmonary Pharmacology</i> Mannfred A. Hollinger <i>Renal Pharmacology</i> William O. Berndt <i>Toxicology</i> Curtis D. Klaassen
<b>Editorial Advisory Board</b>	Martin W. Adler Edson X. Albuquerque Edmund G. Anderson Lewis Aronow Leslie E. Bailey Michael D. Bailie Robert L. Balster Paul Bass John A. Bevan C. Paul Bianchi Leslie C. Blaber David A. Blake Floyd E. Bloom Gary Brooker Carl K. Buckner David B. Bylund Theodore J. Cicero Doris H. Clouet Leonard Cook E. E. Daniel William C. de Groat Walter R. Dixon J. W. Downie Linda Dykstra Hugh L. Evans James A. Ferrendelli Lawrence J. Fischer William W. Fleming Ray W. Fuller Timothy S. Gaginella Gerard L. Gebber James W. Gibb Shri N. Giri	Dora B. Goldstein Frank R. Goodman Charles W. Gorodetzky Garrett J. Gross T. Kendall Harden Harold F. Hardman Louis S. Harris Richard J. Head Philip C. Hoffmann Jordan L. Holtzman Stephen G. Holtzman Jerry B. Hook David M. Jacobowitz Donald R. Jasinski Alain F. Junod S. M. Kirpekar Conan Kornetsky Edwin A. Kroeger Wayne Levin Louis Levy George E. Lindenmayer Walter Lovenberg Benedict R. Lucchesi K. U. Malik John C. McGiff Donald E. McMillan Jerry Mitchell Perry B. Molinoff W. H. Morse Jose M. Musacchio Mary J. Mycek Robert A. Neal Achilles J. Pappano	William A. Pettinger Larissa A. Pohorecky James W. Putney, Jr. Arthur Raines Barbara Rennick G. Alan Robison C. R. Ross Ronald P. Rubin Robert R. Ruffolo, Jr. Betty I. Sasyniuk Arnold Schwartz Lewis S. Seiden Eric J. Simon Roger P. Smith John L. Sutko Robert I. Taber A. E. Takemori Robert E. Ten Eick Thomas R. Tephly Richard E. Tessel C. D. Thron U. Trendelenburg Betty M. Twarog Norman J. Uretsky Martin A. Wasserman I. M. Weiner Benjamin Weiss Richard M. Welch David P. Westfall Martin M. Winbury Barry B. Wolfe Ben G. Zimmerman
<b>Board of Publications Trustees</b>	Norman Weiner, <i>Chairman</i> James A. Bain Joel G. Hardmen Eva King Killam	Betty Sue Masters Jerry R. Mitchell Walter Modell Paul L. Munson	Clement A. Stone Palmer W. Taylor Vincent G. Zannoni
<b>Acting Executive Officer</b>	Kay Croker		

THE JOURNAL OF PHARMACOLOGY AND EXPERIMENTAL THERAPEUTICS (ISSN 002-3565) is published monthly by The American Society for Pharmacology and Experimental Therapeutics, 428 E. Preston Street, Baltimore, MD 21202. Annual dues includes \$60.00 for journal subscription. Second class postage paid at Baltimore, MD and at additional mailing offices. Postmaster send address changes (Form 3579) to Williams & Wilkins, 428 E. Preston St., Baltimore, MD 21202. Indexed by *Current Contents* and *Index Medicus*. Subscription rates \$140.00 (\$165.00 foreign); institutions \$185.00 (\$210 foreign) single copy \$14.00 (\$17.00 foreign). Copyright © 1983 by The American Society for Pharmacology and Experimental Therapeutics.

## O<sub>2</sub> CONSUMPTION MONITOR

Simultaneously Monitors Oxygen Consumption of 1 to 8 Animals



### FEATURES

- One controller for 1 to 8 animal cages
- Continuous measurement of Oxygen Consumption over a 24 hour period in ml oxygen/kg of body weight/hour in STP units.
- Printer prints results every four (4) minutes for each of 1 to 8 animals as well as oxygen percent level in each animal cage
- System adaptable to small or large animals
- Continuous airflow through system with oxygen level measurements at the output and input
- High accuracy, >98% of full measuring range e.g. typical error  $\pm 30$  ml oxygen/kg/hour in 3000 ml oxygen/kg/hour range
- User adjustable alarm warns user of possible hypoxia
- Reusable absorbants
- Auto reference assures high accuracy, system periodically measures ambient air and corrects itself
- Optional RS 232 interface for communication with other computers
- Insensitive to temperature variations in the animal cage.

Columbus Instruments also supplies monitors for: Animal Activity, Cardiac Output, Drinking and Feeding, Respiration Rate and Startle Response.

For more information, call or write to:



**COLUMBUS INSTRUMENTS INTERNATIONAL CORPORATION**

Supplier of individual instruments and total measuring systems

950 N. HAGUE AVE., COLUMBUS, OHIO 43204 U.S.A.  
PHONE: (614) 488-6176 TELEX: 246514

## RATS!!! CARDIAC OUTPUT BY THERMODILUTION

"CARDIOMAX-II-R" is the only computer which can measure cardiac output of rats (also guinea pigs, rabbits, dogs, chickens, horses and humans). For rats, it uses unique Columbus Instruments thermodilution microprobes 1.3 mm in size!

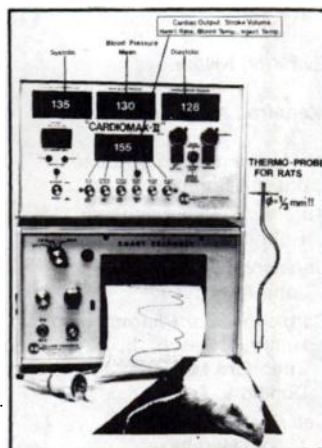
It also measures systolic, diastolic and mean blood pressures and heart rate up to 1000 beats per minute. Stroke volume is also automatically computed.

### Why Measure Cardiac Output of Rats?

Development of salt sensitive and salt resistive strains of rats provided inexpensive models for studying hypertension. Dynamics of rat circulatory system is similar to dogs or humans. Studies on rats cost only a fraction of studies using dogs.

### Automatic Measurements Without Supervision

All parameters (cardiac output, stroke volume, three blood pressures, blood temperature, heart rate, time of day) can automatically be measured periodically and printed when using "Cardiomax-II-R" with Columbus Instruments Automatic Injector and Printer.



For more information, call or write to:



**COLUMBUS INSTRUMENTS INTERNATIONAL CORPORATION**

Supplier of individual instruments and total measuring systems

950 N. HAGUE AVE., COLUMBUS, OHIO 43204 U.S.A.  
PHONE: (614) 488-6176 TELEX: 246514

### Notice to Prospective Authors Wishing to Submit Manuscripts to

### JOURNAL OF PHARMACOLOGY AND EXPERIMENTAL THERAPEUTICS

The expenses associated with the review of manuscripts submitted to those ASPET-sponsored journals that are devoted to publishing original research articles have escalated dramatically in recent years because of ever-increasing costs of postage, supplies, and other office expenses, and the growing number of manuscripts submitted for publication. In order to continue to offer authors the opportunity to publish their original research in our critically reviewed, well-edited, and widely respected journals, it has become necessary for ASPET to follow the example of several other scientific societies which have instituted a uniform manuscript handling fee for each of its journals that publishes original research reports. Therefore, all manuscripts received in the editorial office on or after July 1, 1983, must be accompanied by a check of \$30.00 (in U.S. funds payable to ASPET) or by a validated purchase order from the authors' institution. The review process for submitted manuscripts will be delayed until the manuscript handling fee or purchase order is received in the appropriate Editor's office. We regret the necessity of instituting a manuscript handling fee. The Board of Publications Trustees has concluded, however, that this charge represents the fairest and most appropriate manner to defray the costs related to the review of submitted manuscripts.

<b>Myocardial Disposition of Amiodarone in the Dog.</b> Roberto Latini, Stuart J. Connolly and Robert E. Kates	603
<b>Effect of Aminophylline on Amphotericin B Nephrotoxicity in the Dog.</b> John F. Gerkens, Hugo Th. Heidemann, Edwin K. Jackson and Robert A. Branch	609
<b>Metabolism of [<sup>14</sup>C]Paraldehyde in Mice <i>in Vivo</i>, Generation and Trapping of Acetaldehyde.</b> Malgorzata M. Zaleska and Peter K. Gessner	614
<b>Changes in Histamine Synthetic Activity, Histamine Content and Responsiveness to Compound 48/80 with Maturation of Rat Peritoneal Mast Cells.</b> Michael A. Beaven, Diane L. Aiken, Elizabeth WoldeMussie and Andrew H. Soll	620
<b>Chronic Sulpiride Treatment Produces Supersensitivity of Striatal Adenylate Cyclase to Dopamine in Sexually Immature or Adult Castrated Rats.</b> Margaret E. Gnegy, Adele Bernabei and Glenn Treisman	627
<b>Enkephalins Molulate [<sup>3</sup>H]Dopamine Release from Rabbit Retina <i>in Vitro</i>.</b> M. L. Dubocovich and N. Weiner	634
<b>Rapid Decrease in Rat Brain <i>Beta</i> Adrenergic Receptor Binding during Combined Antidepressant <i>Alpha-2</i> Antagonist Treatment.</b> James A. Scott and Fulton T. Crews	640
<b>Normal and Retrograde Perfusion To Probe the Zonal Distribution of Sulfation and Glucuronidation Activities of Harmol in the Perfused Rat Liver Preparation.</b> K. Sandy Pang, Henk Koster, Ina C. M. Halsema, Egbert Scholtens, Gerard J. Mulder and Richard N. Stillwell	647
<b>Intrinsic Sympathomimetic Activity of the Partial Agonist Prenalterol in Relation to <i>Beta</i> Adrenoceptor Interaction in Various Tissues, <i>in Vitro</i>.</b> H. Mattsson, A. Hedberg and E. Carlsson	654
<b>Effects of <i>d</i>-Amphetamine and Apomorphine upon Operant Behavior and Schedule-Induced Licking in Rats with 6-Hydroxydopamine-Induced Lesions of the Nucleus Accumbens.</b> T. W. Robbins, D. C. S. Roberts and G. F. Koob	662
<b>Alterations in Muscarinic Cholinergic Receptors after Preganglionic Denervation of the Superior Cervical Ganglion in Cats.</b> Takashi Taniguchi, Kazuyoshi Kurahashi and Motohatsu Fujiwara	674
<b>Functional Evidence for Two Stereochemically Different <i>Alpha-2</i> Adrenoceptors Regulating Central Norepinephrine and Serotonin Release.</b> Maurizio Raiteri, Guido Maura and Paola Versace	679
<b>Inactivation of Cytochrome P-450 by a Troleandomycin Metabolite. Protective Role of Glutathione.</b> Dominique Pessayre, Marina Tinel, Dominique Larrey, Barton Cobert, Christian Funck-Brentano and Gerard Babany	685
<b>Circulating Prostacyclin Metabolites in the Dog.</b> Bruce M. Taylor, Ronald J. Shebuski and Frank F. Sun	692
<b>Drug Metabolism in Isolated Proximal Tubule Cells: Aldehyde Dehydrogenase.</b> J. T. Hjelle, D. R. Petersen and J. J. Hjelle	699
<b>Errata</b>	706
<b>Index, Volume 224, January-March, 1983</b>	709

## AUTHOR INDEX

Abernethy, D. R., 508	Gerkens, J. F., 609	Lahti, R. A., 501	Shebuski, R. J., 692
Aiken, D. L., 620	Gessner, P. K., 614	Larrey, D., 685	Shropshire, A. T., 494
Altieri, R. J., 572, 579	Gillis, C. N., 572, 579	Latini, R., 603	Soll, A. H., 620
Ambrus, C. M., 598	Gnegy, M. E., 627	Lindros, K. O., 538	Steen, P. A., 594
Ambrus, J. L., 598	Greenblatt, D. J., 508	Mattsson, H., 654	Stillwell, R. N., 647
Ameer, B., 508	Gronert, G. A., 594	Maura, G., 679	Stupecky, G. L., 543
Anthone, S., 598	Halsema, I. C. M., 647	McCall, R. B., 501	Sun, F. F., 692
Ashbrook, D. W., 543	Hamilton, R. A., 531	McCown, T. J., 489	Takemori, A. E., 525
Babany, G., 685	Hanson, C. A., 514	Milde, J. H., 594	Taniguchi, T., 674
Barsuhn, C., 501	Hedberg, A., 654	Mirand, E. A., 598	Taylor, B. M., 692
Beaven, M. A., 620	Heidemann, H. Th., 609	Mueller, R. A., 489	Thurman, R. G., 538
Bernabei, A., 627	Helmink, R., 531	Mulder, G. J., 647	Tilson, H. A., 590
Branch, R. A., 609	Hjelle, J. J., 699	Nichols, D. E., 567	Tinel, M., 685
Breese, G. R., 489	Hjelle, J. T., 699	Nies, A. S., 483	Torchiana, M. L., 514
Carlsson, E., 654	Holsapple, M. P., 567	Olson, R. D., 483	Treisman, G., 627
Chow, M. S. S., 531	Hong, J. S., 590	Pang, K. S., 647	Trizzino, J., 567
Clineschmidt, B. V., 514	Hook, J. B., 520	Pendleton, R. G., 514	Tune, B. M., 520
Cobert, B., 685	Horvath, C., 598	Pessayre, D., 685	Versace, P., 679
Connolly, S. J., 603	Howe, J. R., 552	Petersen, D. R., 699	Wadell, J. E., 559
Cook, P. G., 514	Hsu, C.-Y., 520	Purdy, R. E., 543	Wang, J.-Y., 552
Cooley, C., 598	Humphrey, S. J., 501	Raiteri, M., 679	Ward, S. J., 525
Crews, F. T., 640	Jackson, E. K., 609	Robbins, T. W., 662	Watanabe, M. Y., 543
Divoll, M., 508	Ji, S., 538	Roberts, D. C. S., 662	Weiner, N., 634
Douglas, J. S., 572, 579	Kalghatgi, K., 598	Ronfeld, R. A., 531	Wendt, R. L., 494
Dubocovich, M. L., 634	Kashiwagi, T., 538	Ruffolo, R. R., Jr., 559	WoldeMussie, E., 620
Fieldman, A., 531	Kates, R. E., 603	Scholtens, E., 647	Yaksh, T. L., 552
Fravert, D., 520	Koob, G. F., 662	Schuette, M. R., 501	Yim, G. K. W., 567
Fujiwara, M., 674	Koster, H., 647	Scott, J. A., 640	Yoshikawa, K., 590
Funck-Brentano, C., 685	Kuo, C.-H., 520	Shader, R. I., 508	Zaleska, M. M., 614
Gerber, J. G., 483	Kurahashi, K., 674	Sharma, S. D., 598	