

Evaluation of *Aa*DOP2 receptor antagonists reveals antidepressants and antipsychotics as novel lead molecules for control of the yellow fever mosquito, *Aedes aegypti*

Jason M. Conley, Jason M. Meyer, Andrew B. Nuss, Trevor B. Doyle, Sergey N. Savinov, Catherine A. Hill, and Val J. Watts

Department of Medicinal Chemistry and Molecular Pharmacology, Purdue University, West Lafayette, IN, USA (JMC, TBD, VJW)

Department of Entomology, Purdue University, West Lafayette, IN, USA (JMM, ABN, CAH)

Bindley Bioscience Center, Discovery Park, Purdue University, West Lafayette, IN, USA (SNS)

Running Title: Antidepressants and antipsychotics as lead insecticides

Corresponding Author:

Val J. Watts

575 Stadium Mall Dr.

West Lafayette, IN 47097

765-496-3872 (office)

765-494-1414 (fax)

wattsv@purdue.edu (email)

Text pages: 40

Tables: 5

Figures: 4

References: 44

Abstract: 240 words

Introduction: 534 words

Discussion: 1561 words

Abbreviations:

CRC: Concentration-response-curve

DMEM: Dulbecco's modified Eagle's medium

GPCR: G protein-coupled receptor

HBSS: Hank's balanced salt solution

HTRF: Homogenous time-resolved fluorescence

HTS: High-throughput screening

IBMX: 3-isobutyl-1-methylxanthine

SAR: Structure-activity relationship

TR-FRET: Time-resolved fluorescence resonance energy transfer

Recommended section:

Drug discovery and translational medicine

Abstract

The yellow fever mosquito, *Aedes aegypti*, vectors disease-causing agents that adversely affect human health, most notably the viruses causing dengue and yellow fever. The efficacy of current mosquito control programs are challenged by the emergence of insecticide-resistant mosquito populations, suggesting an urgent need for the development of chemical insecticides with new mechanisms of action. One recently identified potential insecticide target is the *A. aegypti* D1-like dopamine receptor, *AaDOP2*. The focus of the present study was to evaluate *AaDOP2* antagonism both *in vitro* and *in vivo* using assay technologies with increased throughput. The *in vitro* assays revealed *AaDOP2* antagonism by four distinct chemical scaffolds from tricyclic antidepressant or antipsychotic chemical classes and elucidated several structure-activity-relationship (SAR) trends that contributed to enhanced antagonist potency including lipophilicity, halide substitution on the tricyclic core, and conformational rigidity. Six compounds displayed previously unparalleled potency for *in vitro* *AaDOP2* antagonism, and among these, asenapine, methiothepin, and *cis*-(*Z*)-flupenthixol displayed sub-nanomolar IC₅₀ values and caused rapid toxicity to *A. aegypti* larvae and/or adults *in vivo*. Our study revealed a significant correlation between *in vitro* potency for *AaDOP2* antagonism and *in vivo* toxicity, suggesting viability of *AaDOP2* as an insecticidal target. Taken together, this study expanded the repertoire of known *AaDOP2* antagonists, enhanced our understanding of *AaDOP2* pharmacology, provided further support for rational targeting of *AaDOP2*, and demonstrated the utility of efficiency-enhancing *in vitro* and *in vivo* assay technologies within our genome-to-lead pipeline for the discovery of next-generation insecticides.

Introduction

Mosquitoes transmit pathogens and parasites that cause diseases that adversely affect human health worldwide including malaria, yellow fever, and dengue. Existing approaches for mosquito control have demonstrated efficacy in reducing incidences of such diseases, but are becoming inadequate due to the emergence of insecticide-resistant mosquito populations (Hemingway, 2014; Hemingway and Ranson, 2000). The need for novel mode-of-action compounds to control mosquitoes is further emphasized by the fact that it has been several decades since a new public health insecticide has been deployed to reduce the spread of vector-borne diseases (Hemingway et al., 2006).

Arthropod G protein-coupled receptors (GPCRs) mediate critical biological processes (Hauser et al., 2006) and have emerged as potential insecticide targets (Hill et al., 2013). Molecular approaches, including genome sequencing efforts, have identified more than 100 GPCRs within the genomes of several arthropod vector species (Arensburger et al., 2010; Hill et al., 2002; Kirkness et al., 2010; Nene et al., 2007). Among the GPCR superfamily, the biogenic amine receptors are of particular interest because of their crucial roles in insect physiology and behavior (Fuchs et al., 2014; Hauser et al., 2006). For example, the biogenic amine, dopamine, and its receptors are implicated in a variety of arthropod behaviors including arousal (Kume et al., 2005), locomotion (Draper et al., 2007; Mustard et al., 2010; Yellman et al., 1997), and olfactory learning (Kim et al., 2007; Riemensperger et al., 2011). It is also notable that dopamine is associated with salivary function of vectors (Ali, 1997; Sauer et al., 2000; Simo et al., 2014; Simo et al., 2011), suggesting potential roles for the mediation of pathogen acquisition and transmission during blood feeding. In *Aedes aegypti*, dopamine is also implicated in sclerotization and ovarian/egg development, as increased dopamine levels were observed in

newly emerged adults and also following a blood meal (Andersen et al., 2006). The central roles of dopamine systems in fundamental biological processes offer the dopamine receptors as potential insecticide targets.

A recent study from our invertebrate receptor group supports the pursuit of D1-like dopamine receptors (*AaDOP1* and *AaDOP2*) from the yellow fever mosquito, *A. aegypti*, as targets for novel mode-of-action insecticides (Meyer et al., 2012). Specifically, *AaDOP2* was utilized as a prototypical target for a “genome-to-lead” approach for the discovery of target-based insecticides, where genomic sequence data were used to drive *in vitro* functional characterization of recombinant *AaDOP* receptors in HEK293 cells (Meyer et al., 2012). Following pharmacological characterization, high-throughput screening (HTS)-amenable evaluation of pharmacologically-active compounds identified *AaDOP2* antagonists that display significant *in vivo* toxicity to mosquito larvae (Meyer et al., 2012), supporting the validity of targeting *AaDOP2* for *A. aegypti* control.

The present study entailed a robust follow-up pharmacological analysis of *AaDOP2* antagonists identified in a small molecule screen of the LOPAC₁₂₈₀ library (Meyer et al., 2012). To accomplish this, we developed an HTS-amenable cell-based assay that enabled an in-depth study of *AaDOP2* antagonism by tricyclic antidepressants and structurally-related compounds. Several of these compounds demonstrated enhanced potency for *in vitro* *AaDOP2* antagonism and greater efficacy for larval death in mosquito bioassays. Importantly, we provided evidence that several *AaDOP2* antagonists caused toxicity to adult *A. aegypti*. Furthermore, we improved upon our previously described genome-to-lead pipeline via implementation of efficiency-enhancing *in vivo* assay technologies.

Materials and Methods

Materials

Cis-(Z)-flupenthixol, clozapine, mianserin, nortriptyline, imipramine, protriptyline, norclomipramine, pirenperone, desipramine, haloperidol, trazodone, fluoxetine, fluvoxamine, buspirone, (+)-butaclamol, amoxapine, amitriptyline, chlorpromazine, doxepin, loratadine, ketotifen, chlorprothixene, loxapine, cyproheptadine, asenapine, diphenhydramine, ritanserin, ketanserin, risperidone, 3-isobutyl-1-methylxanthine (IBMX), G418, and Dulbecco's modified Eagle's medium (DMEM) were purchased from Sigma-Aldrich (St. Louis, MO). Amperozide, methiothepin, clomipramine, SCH-23390, LY-310,762, R59-022, and tomoxetine were purchased from Tocris Bioscience (Ellisville, MO). Benztropine was purchased from Enzo Life Sciences (Farmingdale, NY). The antibiotic-antimycotic 100x solution was purchased from Life Technologies (Grand Island, NY). FetalClone I serum, bovine calf serum, HEPES, and Hank's balanced salt solution (HBSS) were purchased from Hyclone (Logan, UT). The HTRF cAMP kit was purchased from Cisbio Bioassays (Bedford, MA).

Cisbio homogenous time-resolved fluorescence (HTRF) cAMP dynamic 2 cell-based assay

HEK293 cells stably expressing *AaDOP2* (HEK-*AaDOP2*) or the human D₁ dopamine receptor (HEK-hD₁) were maintained and cryogenically frozen as previously described (Meyer et al., 2012). To prepare for pharmacological analysis, cells were thawed and re-suspended in assay buffer (HBSS, 20 mM HEPES, 0.1% Fatty acid free bovine serum albumin). To remove cryogenic freezing media, cell suspensions were centrifuged at 500xg for 5 min, followed by aspiration of the supernatant. Cell pellets were re-suspended in assay buffer and seeded into 384-well plates (Perkin Elmer CulturPlate-384) at 2,000-2,500 cells per well and incubated at

37°C and 5% CO₂ for 1 h. Test compounds were added using a 384-well pin tool (V&P Scientific). A MultiFlo (BioTek) low-volume bulk reagent dispenser was used to dispense 3 μM dopamine (in assay buffer containing 500 μM IBMX and 0.02% ascorbic acid) to activate *AaDOP2*. Drug stimulation was carried out at room temperature for 1 h. Cells were lysed by sequential addition of cAMP-d2 and anti-cAMP cryptate conjugate, both diluted 1:39 in lysis buffer and were incubated at room temperature for 1 h. Time-resolved fluorescence resonance energy transfer (TR-FRET) was measured with a lag time of 100 μs and integration time of 300 μs using a Synergy4 (BioTek) fluorescence plate reader with a 330/80 nm excitation filter and emission filters of 620/10 nm and 665/8 nm. Sensitivity parameters were set by reading the cAMP standard curve using the autosensitivity setting. All experimental conditions were read using sensitivity settings obtained for the cAMP standard curve. Cellular cAMP concentrations were estimated in GraphPad Prism by applying the 620/665 nm fluorescence ratio values to a standard curve of known cAMP concentrations.

Cyclic AMP measurements in HEK293 cells stably expressing the human D₁ dopamine receptor were performed as described above, but 500 nM dopamine was used to stimulate cAMP accumulation.

In vivo Aedes aegypti larval screen.

Test compounds were evaluated for *in vivo* toxicity in bioassays against L3 stage *A. aegypti* larvae in a double-blind manner. Briefly, compounds were re-suspended in water and added to wells of a 24-well plate (BD Bioscience, San Jose, CA) in duplicate, with each well containing five *A. aegypti* larvae in 1 ml total volume to achieve a final concentration of 400 μM per well (See Supplemental Figure 1 for illustrations of the assay format). Plates were incubated

at 22°C, and the assay was scored for larval mortality at 24, 48, and 72 h. Larvae unresponsive to gentle tapping of the plate or touch with a sterile probe were scored as dead.

Aedes aegypti adult CRCs.

Test compounds were dissolved in deionized water to a 200 mM stock concentration and serially diluted in *Aedes* saline (Hayes, 1953) to achieve a dose range of 0.25 - 20 mM. Four-day-old *A. aegypti* adult females [average wing length of 3.4 mm, measured as described by Briegel (1990)] were anesthetized on ice and groups of 20 females were injected per dilution of test compound (0.5 µl per mosquito) or *Aedes* saline alone (control) using a pulled glass capillary needle. Additional un-injected mosquito controls were also included. Mosquitoes were housed in 10 cm diameter x 20 cm height paper coffee cup cages with lace screen (secured with rubber bands) and maintained at 75% humidity with 10% sucrose provided *ad libitum* via a cotton wick (See Supplemental Figure 2 for illustrations of injections and mosquito housing). Observations of mortality were made daily for up to 4 d post treatment. Mosquitoes were scored as "dead" if no movement was observed and confirmed by no response to a gentle touch of the legs with a metal probe. When observed at any time point, moribund adult mosquitoes (i.e., insects incapable of standing, walking, or flying) were scored as dead. At the 24 hour time point, and to a lesser extent at the 48 hour time point, we observed a percentage of the adult mosquito population that was moribund. These individuals did not recover and died by assay end-point. The moribund phenotype was negligible at 96 hours (less than 1% of the adult population for any replicate dose). LD₅₀ values for test compounds injected into adult mosquitoes were calculated by non-linear regression using the sigmoidal dose-response equation in the GraphPad Prism software.

Results

In vitro evaluation of AaDOP2 antagonism

Our previous studies indicated potential value in pursuing *AaDOP2* in a target-first approach for developing new insecticides against *A. aegypti* (Meyer et al., 2012). We also demonstrated the success of utilizing a heterologous cell model, where recombinant *AaDOP2* receptors are expressed in HEK293 cells (HEK-*AaDOP2*) for identification and pharmacological evaluation of novel *AaDOP2* ligands (Meyer et al., 2012). To improve upon our genome-to-lead pipeline for novel insecticide discovery, HEK-*AaDOP2* cells were used to develop a cell-based assay that enabled rapid and efficient study of receptor antagonists. The Cisbio HTRF cAMP dynamic 2 detection methodology was chosen as the assay platform, allowing for the direct detection of cAMP in 384-well format, and initial experiments were focused on validating cAMP responses to dopamine stimulation using this assay format. As *AaDOP2* is a G α s-coupled D1-like dopamine receptor, stimulation with dopamine results in an enhanced level of cAMP (Meyer et al., 2012). As expected, dopamine treatment displayed a concentration-dependent enhancement of cAMP accumulation with an EC₅₀ of 950 \pm 190 nM (n = 5). The EC₅₀ of dopamine was similar to that determined in the previous [³H]-cAMP-based quantification method (Meyer et al., 2012). Furthermore, the potency of amitriptyline (the prototypical mosquito-toxic *AaDOP2* antagonist) for inhibition of dopamine-stimulated cAMP in the HEK-*AaDOP2* cells was similar to that previously reported (Tables 1 and 2) (Hill et al., 2013; Meyer et al., 2012), demonstrating suitability of the HTRF cAMP detection technology for high-throughput cell-based pharmacological studies on *AaDOP2*.

Our previous screen of the LOPAC₁₂₈₀ library identified 51 active compounds as *AaDOP2* antagonists, including several tricyclic antidepressants (Meyer et al., 2012).

Importantly, two tricyclic antidepressant compounds, amitriptyline and doxepin, cause significant mortality of mosquito larvae in whole-organism bioassays, suggesting the potential of tricyclic antidepressants as insecticide lead compounds (Meyer et al., 2012). To gain an understanding of the chemical features that are important for *AaDOP2* antagonist activity, pharmacological evaluation of additional small molecules that are structurally related to the tricyclic leads was carried out in the cell-based assay described above. Specifically, nine tricyclic antidepressants and five antidepressant compounds lacking a tricyclic core were studied for their ability to antagonize the cAMP accumulation in response to dopamine treatment (3 μ M) in HEK-*AaDOP2* cells. All nine tricyclic compounds displayed concentration-dependent antagonist activity against *AaDOP2* with IC_{50} values less than 3 μ M, whereas compounds representing other classes of antidepressants displayed less than 10% inhibition at 3 μ M (Figure 1 and Table 1).

To identify novel *AaDOP2* antagonists with chemical structures distinct from the tricyclic antidepressant ring scaffold, we evaluated concentration-dependent effects of a suite of additional active compounds identified in our previous small molecule screen (Meyer et al., 2012) together with structurally-related compounds, enabling an initial *in vitro* SAR analysis. As performed above, test compounds were studied for their ability to modulate dopamine-stimulated (3 μ M) cAMP accumulation in HEK-*AaDOP2* cells (Table 2). Interestingly, six compounds were more potent antagonists than the prototypical *AaDOP2* antagonist, amitriptyline (Table 2). Furthermore, asenapine, methiothepin, and cis-(*Z*)-flupenthixol displayed sub-nanomolar IC_{50} values for inhibition of dopamine-stimulated cAMP in HEK-*AaDOP2* cells (Table 2).

Pharmacological selectivity for the targeted insect over humans and other animals is a critical attribute of potential insecticides. To address this concern, several of the most potent *AaDOP2* antagonists were evaluated for antagonist activity in HEK293 cells stably expressing the human D₁ dopamine receptor (HEK-hD₁ cells) and compared to the hD₁ antagonist, SCH-23390. Each compound inhibited 500 nM-dopamine-stimulated cAMP in the HEK-hD₁ cells and displayed IC₅₀ values between 19 and 13000 nM (Table 3). However, in contrast to the hD₁-selective antagonist SCH-23390, all of these compounds were more potent antagonists of *AaDOP2* than hD₁, suggesting potential species-selective pharmacological profiles for these compounds.

In vivo toxicity of AaDOP2 antagonists: Effects on Aedes aegypti larvae.

An important second step in our insecticide discovery effort was the evaluation of the *in vivo* activity of compounds identified and characterized in the cell-based *in vitro* studies. We developed an *A. aegypti* larval screen that can be performed in 24-well plate format, allowing rapid assessment of *in vivo* toxicity for compounds identified as potent antagonists in the *in vitro* studies. This assay was designed to also enable evaluation of speed-to-kill and support prioritization of compounds for further study. Twenty-five compounds were tested using this approach (Table 4), and 10 compounds (asenapine, chlorpromazine, benztropine, methiothepin, cis-(*Z*)-flupenthixol, chlorprothixene, loxapine, mianserin, amperozide and clomipramine) caused 70-100% larval mortality within 24 hours post-treatment. These compounds were faster-acting and caused greater mortality of mosquito larvae at the 24 hour treatment time-point than our previously identified lead compound for insecticide development, amitriptyline. Notably, asenapine, chlorpromazine, and amperozide caused greater than 70% mortality of the mosquito

population within 30 minutes, and cis-(Z)-flupenthixol, chlorprothixene, mianserin, loxapine and methiothepin caused greater than 70% mortality within three hours (data not shown). We also identified five compounds with moderate mosquito toxicity (i.e., 40-70% mortality at 24 hours post exposure), and nine compounds with limited or no toxicity to mosquito larvae (i.e., 0-40% mortality at 24 hours) (Table 4). The *in vivo* larval mortality data show a significant correlation with *in vitro* potency values for antagonism of dopamine-stimulated cAMP in HEK-AaDOP2 cells ($r = -0.770$, $n = 25$, $p > 0.0001$; Figure 2), providing an important line of evidence that AaDOP2 antagonism is linked to larval toxicity.

In vivo toxicity of AaDOP2 antagonists: Effects on adult Aedes aegypti

Toxicity to adult female *A. aegypti* is considered an important property of any lead molecule because adult female mosquitoes are the only developmental stage responsible for the transmission of disease-causing agents. Therefore, we developed an adult *A. aegypti* assay to evaluate the effects of AaDOP2 antagonists following introduction to the insect hemocoel via microinjection. Four of the most potent *in vitro* and/or most efficacious compounds in the larval bioassay were assessed for toxicity (LD₅₀) and speed-to-kill in adult mosquito bioassays (Figure 3 and Table 5). All compounds tested caused dose-dependent toxicity to adult *A. aegypti* and were capable of providing 100% mortality at all time-points, whereas <6% mortality was observed for the saline injected and un-injected controls throughout the 96 h experiments. Cis-(Z)-flupenthixol was the most potent compound, having an LD₅₀ of 1.26 nmol/mosquito following 24 h exposure (Figure 3). Chlorpromazine and cis-(Z)-flupenthixol became more potent over the course of the four day assay, as LD₅₀ values decreased by ~2-3 fold from the 24 to 96 h time-points for these compounds. In contrast, the LD₅₀ values for amitriptyline and

amperozide remained relatively stable over the same treatment duration, suggesting that these compounds reach their maximum potency earlier than chlorpromazine and cis-(*Z*)-flupenthixol (Table 5).

Discussion

The active ingredients of the major existing neurotoxic classes of insecticides target acetylcholinesterases (organophosphates and carbamates), GABA receptors (organochlorines), and sodium channels (pyrethroids) within insect nervous systems (Hemingway and Ranson, 2000). Continued efficacy of modern commercial insecticides is threatened by the development of insect populations that are resistant to these chemicals (Hemingway and Ranson, 2000), emphasizing the urgency of developing insecticides with new modes of action. Our recent study identified the dopamine receptors of *A. aegypti* as potential targets for yellow fever mosquito control (Meyer et al., 2012). Specifically, larval toxicity was observed for two tricyclic antidepressant compounds (amitriptyline and doxepin) that display *AaDOP2* antagonism (Meyer et al., 2012).

To better understand the chemical basis of *A. aegypti* toxicity observed *in vivo*, compounds with activity profiles similar to amitriptyline and doxepin at human targets (i.e., GPCRs and/or biogenic amine transporters) were evaluated for *in vitro* *AaDOP2* modulation and *in vivo* efficacy in larval bioassays. Several known GPCR-targeting ligands, including tricyclic antidepressants and antipsychotics, demonstrated potent *AaDOP2* antagonism and insecticide activity. However, compounds from other antidepressant classes (e.g., selective serotonin reuptake inhibitors and selective norepinephrine reuptake inhibitors) were largely inactive, suggesting GPCR modulation, rather than biogenic amine transporters, as a contributing mechanism for the observed larval toxicity. Further validating *AaDOP2* as a viable insecticide target, our data revealed a significant correlation between the *in vitro* potency of *AaDOP2* antagonists and the toxicity of these compounds to mosquito larvae *in vivo* (Figure 2). However, it should be noted that benztropine and amperozide, which caused rapid and high larval mortality

(Table 4) had somewhat moderate *in vitro* potency at *AaDOP2* (IC_{50} values of 340 ± 41 nM and 570 ± 110 nM, respectively). Amperozide and benztropine interact with several different mammalian GPCR families (Arnt and Skarsfeldt, 1998; Bolden et al., 1992; Kanba and Richelson, 1984; U'Prichard et al., 1977), suggesting the possibility that modulation of additional *A. aegypti* GPCRs could contribute to the *in vivo* toxicity of these compounds. Alternatively, such differences between the *in vitro* potency and the magnitude of *in vivo* toxicity for a given compound may reflect complex factors that impact *in vivo* insecticidal activity, including differences in the physico-chemical properties of compounds that affect absorption through the insect cuticle, dissemination through insect tissues to the target site, and detoxification by insect gut and hemolymph enzymes. Nonetheless, the correlation between the *in vitro* potencies for *AaDOP2* antagonism and larval toxicities suggests that optimizing compounds for potency and selectivity *in vitro* may be an efficient way to identify and prioritize new lead compounds.

The *in vitro* evaluation of the chosen compounds for modulation of *AaDOP2* provided preliminary insight into the relationship between chemical structure and the potency of *AaDOP2* antagonism. One SAR trend suggests that conformational rigidity contributes to the potency of *AaDOP2* antagonists. For example, compounds with 6- or 7-membered central rings were generally the most potent *AaDOP2* antagonists (Tables 1 and 2 and Supplemental Figure 3). However, the moderate potency of R59-022, risperidone, benztropine, and amperozide (IC_{50} values ranging from 53-570 nM) indicate that the central ring is not essential for antagonist activity. Benztropine was ~22-fold more potent than diphenhydramine, suggesting that conformational control of the amine moiety also contributes to the potency of compounds with no central ring (Figure 4A). Another SAR trend suggested that greater lipophilicity may enhance *AaDOP2* antagonist potency as was observed by the ~3-fold greater potency of amitriptyline

over doxepin (Figure 4B). Furthermore, ligands with tertiary amines (clomipramine, imipramine, amitriptyline, and loxapine) were ~5-100-fold more potent than the secondary amine analogs of these compounds (norclomipramine, desipramine, nortriptyline, and amoxapine, respectively), demonstrating the influence of amine-state on *AaDOP2* antagonist potency (Figure 4C and Supplemental Figure 3). Also, clomipramine and norclomipramine displayed ~5-6 fold more potent IC_{50} values than imipramine and desipramine, respectively, suggesting that halide substituents of aromatic rings within the tricyclic core can increase the potency of the identified antagonists (Figure 4C). Enhancements in *AaDOP2* antagonist potency were also apparent when considering combinations of chemical properties such as lipophilicity and halide substitution (Figure 4C, clomipramine vs. desipramine) or lipophilicity and conformational rigidity (Figure 4D). The chemical scaffolds identified above and their key structural features that contribute to *AaDOP2* antagonism may be utilized to guide further lead optimization studies.

The *in vitro* and *in vivo* data presented here support the hypothesis that targeting GPCR-mediated processes is a viable strategy for identifying insecticidal compounds. However, a major challenge associated with this approach is the development of ligands that are selective for disruption of biological activity in *A. aegypti* but not in humans or other higher eukaryotes. To date, all reports of compounds that display both *AaDOP2* antagonism and *in vivo* efficacy are known to have biological activity in humans. Our studies identified compounds that are highly selective for targeting *AaDOP2* receptors over the human D_1 dopamine receptor (Table 3), but antipsychotics and tricyclic antidepressants potently interact with other families of mammalian GPCRs including histamine, serotonin, adrenergic, and muscarinic receptors (Cusack et al., 1994; von Coburg et al., 2009). The development of ligands that selectively target biological activity in *A. aegypti* over humans and other animals could potentially be addressed by using

cell-based *in vitro* assays to screen against panels of human GPCRs. Also, virtual or *in silico* screening methods are emerging as promising approaches for the study of GPCR modulators (Shoichet and Kobilka, 2012). Such computational methodologies for lead optimization of antipsychotics and tricyclic antidepressants are strengthened by recently reported human GPCR crystal structures from histamine (Shimamura et al., 2011), serotonin (Wang et al., 2013), dopamine (Chien et al., 2010), adrenergic (Rasmussen et al., 2007; Warne et al., 2008), and muscarinic (Haga et al., 2012; Kruse et al., 2012) receptor families. The combination of these *in vitro* and *in silico* approaches is expected to provide insight into the molecular determinants of selectivity for *AaDOP2* versus human GPCRs and may ultimately produce mosquito GPCR-selective small molecules.

Pharmacological selectivity considerations are multi-fold, as ligand selectivity for *AaDOP2* receptors over non-target insects (e.g., honeybees), in addition to selectivity over human GPCRs, is also paramount. Pharmacological screening panels can be assembled for invertebrate targets to better understand ligand pharmacology at these receptors. For example, cross-species comparative pharmacological studies of invertebrate dopamine receptor modulation can be expanded to include GPCRs from non-target insects. Furthermore, upon genome-mining and cloning of additional biogenic amine receptors (in addition to *AaDOP1* and *AaDOP2*), *AaDOP2* antagonists can be screened for modulation of other *A. aegypti* GPCRs including muscarinic acetylcholine, serotonin, and octopamine/tyramine receptors (Nene et al., 2007). These pharmacological efforts are expected to provide a deeper understanding of small molecule modulation of invertebrate GPCRs and may ultimately allow for target-based pesticide discovery efforts related to other pest arthropods.

Here we report significant advancements and modifications to our genome-to-lead insecticide discovery pipeline (Meyer et al., 2012). Incorporation of an *in vitro* HTRF assay enabled efficient *in vitro* pharmacological evaluation and SAR profiling, while offering several advantages over the previously utilized CRE-mediated luciferase reporter assay for HTS. Direct measurement of cAMP eliminates false-positives associated with CRE-luciferase reporter assays that include cAMP/PKA-independent modulation of CRE-mediated transcription (George et al., 1997; Hill et al., 2001) or direct modulation of luciferase (Thorne et al., 2010). Furthermore, the HTRF screening platform was robust enough to support future HTS of small molecules for *AaDOP2* antagonist activity in 384-well format in singlet (i.e., $Z' > 0.5$, *unpublished observations*), enabling sufficient throughput to carry out the *in vitro* pharmacological profiling proposed above. The HTRF screening platform also provides flexibility, as it can be used to detect modulation of additional downstream GPCR signaling pathways including ERK1/2 and $\text{Ca}^{2+}/\text{IP}_3$ (Degorce et al., 2009). Other improvements to our established insecticide discovery pipeline for small molecule modulators of *AaDOP2* (Meyer et al., 2012) include the enhanced-throughput larval mosquito bioassay (Table 4) to rapidly assess larval toxicity and the utilization of an injection assay to evaluate toxicity in adult *A. aegypti*.

In addition to the antipsychotic and tricyclic antidepressant lead optimization and GPCR profiling studies suggested above, HTS of diverse small molecule libraries for the identification of *AaDOP2* modulators with novel chemical scaffolds may also be a fruitful endeavor. Especially enticing is the possibility of screening for allosteric modulators of *AaDOP2* receptors, as drug discovery campaigns targeting multiple human GPCRs have identified allosteric modulators with unmatched specificity and selectivity (Conn et al., 2009; Wootten et al., 2013). Allosteric modulators are attractive because the orthosteric sites (i.e., the sites of endogenous

ligand binding) are largely conserved between the human D₁ and *AaDOP2*, but our published studies suggest that there are opportunities to exploit allosteric sites in the intracellular and extracellular loops where sequence similarity between species is reduced (Hill et al., 2013; Meyer et al., 2012). Our emerging understanding of the chemical basis of *AaDOP2* receptor antagonism, together with advancements in assay throughput, suggest that the diverse molecular approaches described above can be combined to expedite the discovery of novel ligands that selectively modulate GPCRs of target insects.

The present study describes the *in vitro* pharmacological characterization and *in vivo* efficacy of several *AaDOP2* antagonists and demonstrated improvements upon our “genome-to-lead” pipeline (Meyer et al., 2012). Specifically, we report the characterization of compounds with unparalleled *in vitro* potency for *AaDOP2* inhibition and improved efficacy for *A. aegypti* larval toxicity, and demonstrated toxicity of these compounds to adult mosquitoes. Collectively, our findings provided a major advancement in the development of invertebrate GPCR-targeting technology for novel mode-of-action insecticides.

Acknowledgements

We thank Dr. Eric Barker (Purdue University) and Dr. David Nichols (Purdue University) for generously providing venlafaxine and aripiprazole, respectively. We also thank Isabelle Verona Brust for assistance with figure preparation.

Authorship Contributions

Participated in research design: Conley, Hill, Meyer, Nuss, and Watts

Conducted experiments: Conley, Doyle, Meyer, and Nuss

Contributed new reagents or analytical tools: Hill and Watts

Performed data analysis: Conley, Doyle, Hill, Meyer, Nuss, Savinov, and Watts

Wrote or contributed to writing of the manuscript: Conley, Hill, Meyer, Nuss, Savinov, and
Watts

References

- Ali DW (1997) The aminergic and peptidergic innervation of insect salivary glands. *Journal of Experimental Biology* **200**(14): 1941-1949.
- Andersen JP, Schwartz A, Gramsbergen JB and Loeschcke V (2006) Dopamine levels in the mosquito *Aedes aegypti* during adult development, following blood feeding and in response to heat stress. *Journal of Insect Physiology* **52**(11-12): 1163-1170.
- Arensburger P, Megy K, Waterhouse RM, Abrudan J, Amedeo P, Antelo B, Bartholomay L, Bidwell S, Caler E, Camara F, Campbell CL, Campbell KS, Casola C, Castro MT, Chandramouliswaran I, Chapman SB, Christley S, Costas J, Eisenstadt E, Feschotte C, Fraser-Liggett C, Guigo R, Haas B, Hammond M, Hansson BS, Hemingway J, Hill SR, Howarth C, Ignell R, Kennedy RC, Kodira CD, Lobo NF, Mao CH, Mayhew G, Michel K, Mori A, Liu NN, Naveira H, Nene V, Nguyen N, Pearson MD, Pritham EJ, Puiu D, Qi YM, Ranson H, Ribeiro JMC, Roberston HM, Severson DW, Shumway M, Stanke M, Strausberg RL, Sun C, Sutton G, Tu ZJ, Tubio JMC, Unger MF, Vanlandingham DL, Vilella AJ, White O, White JR, Wondji CS, Wortman J, Zdobnov EM, Birren B, Christensen BM, Collins FH, Cornel A, Dimopoulos G, Hannick LI, Higgs S, Lanzaro GC, Lawson D, Lee NH, Muskavitch MAT, Raikhel AS and Atkinson PW (2010) Sequencing of *Culex quinquefasciatus* Establishes a Platform for Mosquito Comparative Genomics. *Science* **330**(6000): 86-88.
- Arnt J and Skarsfeldt T (1998) Do novel antipsychotics have similar pharmacological characteristics? A review of the evidence. *Neuropsychopharmacology* **18**(2): 63-101.

- Bolden C, Cusack B and Richelson E (1992) Antagonism by antimuscarinic and neuroleptic compounds at the 5 cloned human muscarinic cholinergic receptors expressed in Chinese-hamster ovary cells. *Journal of Pharmacology and Experimental Therapeutics* **260**(2): 576-580.
- Briegel H (1990) Metabolic relationship between female body size, reserves, and fecundity of *Aedes aegypti*. *Journal of Insect Physiology* **36**(3): 165-172.
- Chien EYT, Liu W, Zhao Q, Katritch V, Han GW, Hanson MA, Shi L, Newman AH, Javitch JA, Cherezov V and Stevens RC (2010) Structure of the Human Dopamine D3 Receptor in Complex with a D2/D3 Selective Antagonist. *Science* **330**(6007): 1091-1095.
- Conn PJ, Christopoulos A and Lindsley CW (2009) Allosteric modulators of GPCRs: a novel approach for the treatment of CNS disorders. *Nature Reviews Drug Discovery* **8**(1): 41-54.
- Cusack B, Nelson A and Richelson E (1994) Binding of antidepressants to human brain receptors - Focus on newer generation compounds. *Psychopharmacology* **114**(4): 559-565.
- Degorce F, Card A, Soh S, Trinquet E, Knapik GP and Xie B (2009) HTRF: A technology tailored for drug discovery - a review of theoretical aspects and recent applications. *Current chemical genomics* **3**: 22-32.
- Draper I, Kurshan PT, McBride E, Jackson FR and Kopin AS (2007) Locomotor activity is regulated by D2-like receptors in *Drosophila*: An anatomic and functional analysis. *Developmental Neurobiology* **67**(3): 378-393.

- Fuchs S, Rende E, Crisanti A and Nolan T (2014) Disruption of aminergic signalling reveals novel compounds with distinct inhibitory effects on mosquito reproduction, locomotor function and survival. *Scientific Reports* **4**.
- George SE, Bungay PJ and Naylor LH (1997) Evaluation of a CRE-directed luciferase reporter gene assay as an alternative to measuring cAMP accumulation. *Journal of Biomolecular Screening* **2**(4): 235-240.
- Haga K, Kruse AC, Asada H, Yurugi-Kobayashi T, Shiroishi M, Zhang C, Weis WI, Okada T, Kobilka BK, Haga T and Kobayashi T (2012) Structure of the human M2 muscarinic acetylcholine receptor bound to an antagonist. *Nature* **482**(7386): 547-551.
- Hauser F, Cazzamali G, Williamson M, Blenau W and Grimmelikhuijzen CJP (2006) A review of neurohormone GPCRs present in the fruitfly *Drosophila melanogaster* and the honey bee *Apis mellifera*. *Progress in Neurobiology* **80**(1): 1-19.
- Hayes RO (1953) Determination of a physiological saline solution for *Aedes aegypti* (L). *Journal of Economic Entomology* **46**(4): 624-627.
- Hemingway J (2014) The role of vector control in stopping the transmission of malaria: threats and opportunities. *Philosophical Transactions of the Royal Society B-Biological Sciences* **369**(1645).
- Hemingway J, Beaty BJ, Rowland M, Scott TW and Sharp BL (2006) The innovative vector control consortium: improved control of mosquito-borne diseases. *Trends in Parasitology* **22**(7): 308-312.
- Hemingway J and Ranson H (2000) Insecticide resistance in insect vectors of human disease. *Annual Review of Entomology* **45**: 371-391.

- Hill CA, Fox AN, Pitts RJ, Kent LB, Tan PL, Chrystal MA, Cravchik A, Collins FH, Robertson HM and Zwiebel LJ (2002) G protein coupled receptors in *Anopheles gambiae*. *Science* **298**(5591): 176-178.
- Hill CA, Meyer JM, Ejendal KFK, Echeverry DF, Lang EG, Avramova LV, Conley JM and Watts VJ (2013) Re-invigorating the insecticide discovery pipeline for vector control: GPCRs as targets for the identification of next gen insecticides. *Pesticide Biochemistry and Physiology* **106**(3): 141-148.
- Hill SJ, Baker JG and Rees S (2001) Reporter-gene systems for the study of G-protein-coupled receptors. *Current Opinion in Pharmacology* **1**(5): 526-532.
- Kanba S and Richelson E (1984) Histamine H1 Receptors in human brain labeled with [3H]doxepin. *Brain Research* **304**(1): 1-7.
- Kim YC, Lee HG and Han KA (2007) D-1 dopamine receptor dDA1 is required in the mushroom body neurons for aversive and appetitive learning in *Drosophila*. *Journal of Neuroscience* **27**(29): 7640-7647.

Kirkness EF, Haas BJ, Sun WL, Braig HR, Perotti MA, Clark JM, Lee SH, Robertson HM, Kennedy RC, Elhaik E, Gerlach D, Kriventseva EV, Elsik CG, Graur D, Hill CA, Veenstra JA, Walenz B, Tubio JMC, Ribeiro JMC, Rozas J, Johnston JS, Reese JT, Popadic A, Tojo M, Raoult D, Reed DL, Tomoyasu Y, Krause E, Mittapalli O, Margam VM, Li HM, Meyer JM, Johnson RM, Romero-Severson J, VanZee JP, Alvarez-Ponce D, Vieira FG, Aguade M, Guirao-Rico S, Anzola JM, Yoon KS, Strycharz JP, Unger MF, Christley S, Lobo NF, Seufferheld MJ, Wang NK, Dasch GA, Struchiner CJ, Madey G, Hannick LI, Bidwell S, Joardar V, Caler E, Shao RF, Barker SC, Cameron S, Bruggner RV, Regier A, Johnson J, Viswanathan L, Utterback TR, Sutton GG, Lawson D, Waterhouse RM, Venter JC, Strausberg RL, Berenbaum MR, Collins FH, Zdobnov EM and Pittendrigh BR (2010) Genome sequences of the human body louse and its primary endosymbiont provide insights into the permanent parasitic lifestyle. *Proceedings of the National Academy of Sciences of the United States of America* **107**(27): 12168-12173.

Kruse AC, Hu J, Pan AC, Arlow DH, Rosenbaum DM, Rosemond E, Green HF, Liu T, Chae PS, Dror RO, Shaw DE, Weis WI, Wess J and Kobilka BK (2012) Structure and dynamics of the M3 muscarinic acetylcholine receptor. *Nature* **482**(7386): 552-556.

Kume K, Kume S, Park SK, Hirsh J and Jackson FR (2005) Dopamine is a regulator of arousal in the fruit fly. *Journal of Neuroscience* **25**(32): 7377-7384.

Meyer JM, Ejendal KFK, Avramova LV, Garland-Kuntz EE, Giraldo-Calderon GI, Brust TF, Watts VJ and Hill CA (2012) A "Genome-to-Lead" Approach for Insecticide Discovery: Pharmacological Characterization and Screening of *Aedes aegypti* D-1-like Dopamine Receptors. *Plos Neglected Tropical Diseases* **6**(1).

Mustard JA, Pham PM and Smith BH (2010) Modulation of motor behavior by dopamine and the D1-like dopamine receptor AmDOP2 in the honey bee. *Journal of Insect Physiology* **56**(4): 422-430.

Nene V, Wortman JR, Lawson D, Haas B, Kodira C, Tu ZJ, Loftus B, Xi ZY, Megy K, Grabherr M, Ren QH, Zdobnov EM, Lobo NF, Campbell KS, Brown SE, Bonaldo MF, Zhu JS, Sinkins SP, Hogenkamp DG, Amedeo P, Arensburger P, Atkinson PW, Bidwell S, Biedler J, Birney E, Bruggner RV, Costas J, Coy MR, Crabtree J, Crawford M, deBruyn B, DeCaprio D, Eiglmeier K, Eisenstadt E, El-Dorri H, Gelbart WM, Gomes SL, Hammond M, Hannick LI, Hogan JR, Holmes MH, Jaffe D, Johnston JS, Kennedy RC, Koo H, Kravitz S, Kriventseva EV, Kulp D, LaButti K, Lee E, Li S, Lovin DD, Mao CH, Mauceli E, Menck CFM, Miller JR, Montgomery P, Mori A, Nascimento AL, Naveira HF, Nusbaum C, O'Leary S, Orvis J, Perteua M, Quesneville H, Reidenbach KR, Rogers YH, Roth CW, Schneider JR, Schatz M, Shumway M, Stanke M, Stinson EO, Tubio JMC, VanZee JP, Verjovski-Almeida S, Werner D, White O, Wyder S, Zeng QD, Zhao Q, Zhao YM, Hill CA, Raikhel AS, Soares MB, Knudson DL, Lee NH, Galagan J, Salzberg SL, Paulsen IT, Dimopoulos G, Collins FH, Birren B, Fraser-Liggett CM and Severson DW (2007) Genome sequence of *Aedes aegypti*, a major arbovirus vector. *Science* **316**(5832): 1718-1723.

Rasmussen SGF, Choi H-J, Rosenbaum DM, Kobilka TS, Thian FS, Edwards PC, Burghammer M, Ratnala VRP, Sanishvili R, Fischetti RF, Schertler GFX, Weis WI and Kobilka BK (2007) Crystal structure of the human beta(2) adrenergic G-protein-coupled receptor. *Nature* **450**(7168): 383-387.

- Riemensperger T, Isabel G, Coulom H, Neuser K, Seugnet L, Kume K, Iche-Torres M, Cassar M, Strauss R, Preat T, Hirsh J and Birman S (2011) Behavioral consequences of dopamine deficiency in the *Drosophila* central nervous system. *Proceedings of the National Academy of Sciences of the United States of America* **108**(2): 834-839.
- Sauer JR, Essenberg RC and Bowman AS (2000) Salivary glands in ixodid ticks: control and mechanism of secretion. *Journal of Insect Physiology* **46**(7): 1069-1078.
- Shimamura T, Shiroishi M, Weyand S, Tsujimoto H, Winter G, Katritch V, Abagyan R, Cherezov V, Liu W, Han GW, Kobayashi T, Stevens RC and Iwata S (2011) Structure of the human histamine H-1 receptor complex with doxepin. *Nature* **475**(7354): 65-70.
- Shoichet BK and Kobilka BK (2012) Structure-based drug screening for G-protein-coupled receptors. *Trends in Pharmacological Sciences* **33**(5): 268-272.
- Simo L, Koci J, Kim D and Park Y (2014) Invertebrate specific D1-like dopamine receptor in control of salivary glands in the black-legged tick *Ixodes scapularis*. *The Journal of comparative neurology* **522**(9): 2038-2052.
- Simo L, Koci J, Zitnan D and Park Y (2011) Evidence for D1 Dopamine Receptor Activation by a Paracrine Signal of Dopamine in Tick Salivary Glands. *Plos One* **6**(1).
- Thorne N, Auld DS and Inglese J (2010) Apparent activity in high-throughput screening: origins of compound-dependent assay interference. *Current Opinion in Chemical Biology* **14**(3): 315-324.
- U'Prichard DC, Greenberg DA and Snyder SH (1977) Binding characteristics of a radiolabeled agonist and antagonist at central nervous-system alpha noradrenergic receptors. *Molecular Pharmacology* **13**(3): 454-473.

- von Coburg Y, Kottke T, Weizel L, Ligneau X and Stark H (2009) Potential utility of histamine H(3) receptor antagonist pharmacophore in antipsychotics. *Bioorganic & Medicinal Chemistry Letters* **19**(2): 538-542.
- Wang C, Jiang Y, Ma J, Wu H, Wacker D, Katritch V, Han GW, Liu W, Huang X-P, Vardy E, McCorvy JD, Gao X, Zhou XE, Melcher K, Zhang C, Bai F, Yang H, Yang L, Jiang H, Roth BL, Cherezov V, Stevens RC and Xu HE (2013) Structural Basis for Molecular Recognition at Serotonin Receptors. *Science* **340**(6132): 610-614.
- Warne T, Serrano-Vega MJ, Baker JG, Moukhametzianov R, Edwards PC, Henderson R, Leslie AGW, Tate CG and Schertler GFX (2008) Structure of a beta(1)-adrenergic G-protein-coupled receptor. *Nature* **454**(7203): 486-491.
- Wootten D, Christopoulos A and Sexton PM (2013) Emerging paradigms in GPCR allostery: implications for drug discovery. *Nature Reviews Drug Discovery* **12**(8): 630-644.
- Yellman C, Tao H, He B and Hirsh J (1997) Conserved and sexually dimorphic behavioral responses to biogenic amines in decapitated *Drosophila*. *Proceedings of the National Academy of Sciences of the United States of America* **94**(8): 4131-4136.

Footnotes

a) This work was supported by a U.S. Department of Defense, Deployed War Fighter Project award [Grant W911QY] and a Purdue Research Foundation Trask Innovation Award to C.A.H and V.J.W. Additional support was supplied from the Indiana Clinical and Translational Sciences Institute funded, in part, by the National Institutes of Health, National Center for Advancing Translational Sciences, Clinical and Translational Sciences Award [Grant UL1TR001108].

b) Address correspondence to:

Val J. Watts, Department of Medicinal Chemistry and Molecular Pharmacology, Purdue University, West Lafayette, IN 47907, U.S.A. E-mail: wattsv@purdue.edu

Figure Legends

Figure 1. Concentration-response curves for selected *AaDOP2* antagonists. Test compounds were evaluated for the ability to inhibit dopamine (3 μM)-stimulated cAMP in HEK-*AaDOP2* cells. Data points represent mean \pm S.E.M. for at least three independent experiments.

Figure 2. Correlation analysis of test compounds evaluated for *in vitro* potency (IC_{50} values in HEK-*AaDOP2* cells) and *in vivo* toxicity (Percent mortality of *A. aegypti* L3-stage larvae following 24 h treatment). The *in vitro* potency values for compounds that provided less than 10% inhibition of dopamine-stimulated cAMP in HEK-*AaDOP2* cells were set to 20 μM .

Figure 3. Concentration-response curves of adult *Aedes aegypti* female mortality 24 h after injection with *AaDOP2* antagonists. Each data point represents mean \pm S.E.M. for three independent experiments. No mortality was observed in saline-injected or un-injected controls at the 24 h timepoint.

Figure 4. Structure-activity relationship trends for *AaDOP2* receptor antagonists. Compound names and *in vitro* IC_{50} values (nM) for *AaDOP2* antagonism were included.

Tables

Table 1. Evaluation of antidepressant compounds from distinct classes for antagonism of the *A α* DOP2 receptor. The effect of various concentrations of antidepressant compounds was tested for inhibition of 3 μ M dopamine-stimulated cAMP in HEK-*A α* DOP2 receptor cells. Data represent the mean \pm S.E.M. IC₅₀ values for at least three independent experiments.

| Compound | IC ₅₀ \pm SEM (nM) | Chemical Class |
|-----------------|---------------------------------|-----------------|
| (+)-Butaclamol | 260 \pm 32 | DR antagonist |
| Amitriptyline | 5.1 \pm 1.2 | TCA |
| Amoxapine | 20 \pm 8.4 | TeCA |
| Atomoxetine | No Inhibition ^a | NRI |
| Clomipramine | 56 \pm 18 | TCA |
| Desipramine | 3300 \pm 600 | TCA |
| Doxepin | 20 \pm 6.2 | TCA |
| Fluoxetine | No Inhibition ^a | SSRI |
| Fluvoxamine | No Inhibition ^a | SSRI |
| Imipramine | 360 \pm 34 | TCA |
| Norclomipramine | 670 \pm 35 | TCA |
| Nortriptyline | 140 \pm 50 | TCA |
| Protriptyline | 600 \pm 250 | TCA |
| SCH-23390 | 1300 \pm 340 | D1DR antagonist |
| Trazodone | No Inhibition ^a | SARI |
| Venlafaxine | No Inhibition ^a | SNRI |

^a Less than 10% inhibition at 3 μ M compound

D1DR, selective D1-like dopamine receptor antagonist; DR antagonist, non-selective dopamine receptor antagonist; NRI, norepinephrine reuptake inhibitor; SARI, serotonin antagonist and reuptake inhibitor; SNRI serotonin and norepinephrine reuptake inhibitor; SSRI, selective serotonin reuptake inhibitor; TCA, tricyclic antidepressant; TeCA, tetracyclic antidepressant

Table 2. Pharmacological characterization of compounds for antagonist activity against the *Aa*DOP2 receptor. The effect of various concentrations of compounds was tested for inhibition of 3 μ M dopamine-stimulated cAMP in HEK-*Aa*DOP2 receptor cells. The data represent the mean \pm S.E.M. IC₅₀ values for at least three independent experiments.

| Compound | IC₅₀\pmS.E.M. (nM) |
|----------------------|---|
| (+)-Butaclamol | 160 \pm 31 |
| Amitriptyline | 7.2 \pm 1.2 |
| Amperozide | 570 \pm 110 |
| Aripiprazole | 6500 \pm 770 |
| Asenapine | 0.30 \pm 0.06 |
| Benztropine | 340 \pm 41 |
| Chlorpromazine | 17 \pm 0.88 |
| Chlorprothixene | 1.2 \pm 0.39 |
| Cis-(Z)-flupenthixol | 0.35 \pm 0.07 |
| Clozapine | 14 \pm 2.9 |
| Cyproheptadine | 6.5 \pm 1.9 |
| Diphenhydramine | 7500 \pm 2800 |
| Haloperidol | 4300 \pm 1000 |
| Ketanserin | 3200 \pm 360 |
| Ketotifen | 750 \pm 180 |
| Loratadine | 18000 \pm 1800 |
| Loxapine | 5.9 \pm 1.4 |

| | |
|--------------|-----------|
| LY-310,762 | 3000±820 |
| Methiothepin | 0.25±0.05 |
| Mianserin | 130±24 |
| Olanzapine | 11±2.2 |
| Pirenperone | 680±98 |
| R59-022 | 53±13 |
| Risperidone | 150±41 |
| Ritanserin | 500±110 |

Table 3. Assessment of compound potency for human D₁ receptor antagonism. The effect of various concentrations of compounds was tested for inhibition of 500 nM dopamine-stimulated cAMP in HEK-hD₁ cells. The data represent the mean ± S.E.M. IC₅₀ values for four independent experiments.

| Compound | IC₅₀±S.E.M. (nM) | Relative fold selectivity (AαDOP2/hD₁) |
|----------------------|------------------------------------|--|
| Amitriptyline | 1100±110 | 170 |
| Amperozide | 13000±680 | 23 |
| Asenapine | 150±11 | 500 |
| Chlorpromazine | 750±80 | 44 |
| Chlorprothixene | 49±8.5 | 41 |
| Cis-(Z)-flupenthixol | 19±1.7 | 54 |
| Cyproheptadine | 1400±160 | 220 |
| Doxepin | 2500±240 | 130 |
| Loxapine | 300±31 | 51 |
| Methiothepin | 83±9.0 | 330 |
| SCH-23390 | 1.2±0.20 | 0.0009 |

Table 4. *In vivo* toxicity of test compounds to *Aedes aegypti* larvae. Data represent the mean \pm S.E.M. of three independent experiments.

| Compound | Larval Mortality (%) | | |
|----------------------|----------------------|-------------|-------------|
| | 24 h | 48 h | 72 h |
| Amitriptyline | 63 \pm 20 | 87 \pm 7 | 93 \pm 3 |
| Amperozide | 93 \pm 7 | 93 \pm 7 | 93 \pm 7 |
| Asenapine | 100 \pm 0 | 100 \pm 0 | 100 \pm 0 |
| Benztropine | 100 \pm 0 | 100 \pm 0 | 100 \pm 0 |
| Chlorpromazine | 100 \pm 0 | 100 \pm 0 | 100 \pm 0 |
| Chlorprothixene | 87 \pm 9 | 93 \pm 7 | 100 \pm 0 |
| Cis-(Z)-flupenthixol | 100 \pm 0 | 100 \pm 0 | 100 \pm 0 |
| Clomipramine | 70 \pm 21 | 93 \pm 3 | 93 \pm 3 |
| Desipramine | 30 \pm 25 | 40 \pm 30 | 43 \pm 28 |
| Diphenhydramine | 63 \pm 12 | 77 \pm 9 | 83 \pm 9 |
| Fluoxetine | 43 \pm 30 | 53 \pm 24 | 53 \pm 24 |
| Fluvoxamine | 27 \pm 22 | 33 \pm 28 | 43 \pm 24 |
| Imipramine | 53 \pm 26 | 63 \pm 20 | 80 \pm 12 |
| Ketanserin | 0 \pm 0 | 0 \pm 0 | 0 \pm 0 |
| Loxapine | 97 \pm 3 | 100 \pm 0 | 100 \pm 0 |
| LY-310,762 | 0 \pm 0 | 3 \pm 3 | 3 \pm 3 |
| Methiothepin | 100 \pm 0 | 100 \pm 0 | 100 \pm 0 |
| Mianserin | 97 \pm 3 | 97 \pm 3 | 97 \pm 3 |
| Norclomipramine | 40 \pm 31 | 63 \pm 19 | 70 \pm 15 |

| | | | |
|----------------------|-------|-------|-------|
| Nortriptyline | 43±28 | 63±19 | 73±15 |
| Pirenzepine | 0±0 | 0±0 | 0±0 |
| Protriptyline | 37±12 | 43±13 | 53±23 |
| SCH-23390 | 3±3 | 23±12 | 47±23 |
| Tomoxetine | 20±15 | 30±20 | 30±20 |
| Venlafaxine | 3±3 | 7±7 | 13±9 |
| Control (water only) | 0±0 | 1±1 | 3±1 |

Table 5. Toxicity of injected *AaDOP2* antagonists to four-day-old adult female *A. aegypti*. LD₅₀ values (nmol/mosquito) were calculated from dead and moribund mosquitoes and represent the mean ± S.E.M. of three independent experiments. The average percent mortality was less than 6% for both injected and un-injected controls throughout the experiment.

| Compound | 24 h | 48 h | 72 h | 96 h |
|----------------------|-------------|-------------|-------------|-------------|
| Amitriptyline | 3.78 ± 0.02 | 3.39 ± 0.02 | 3.09 ± 0.02 | 3.06 ± 0.02 |
| Amperozide | 2.19 ± 0.03 | 1.98 ± 0.02 | 1.92 ± 0.07 | 1.92 ± 0.03 |
| Chlorpromazine | 2.34 ± 0.02 | 1.97 ± 0.02 | 1.30 ± 0.03 | 1.27 ± 0.02 |
| Cis-(Z)-flupenthixol | 1.26 ± 0.01 | 0.67 ± 0.02 | 0.46 ± 0.03 | 0.42 ± 0.02 |

Figure 1

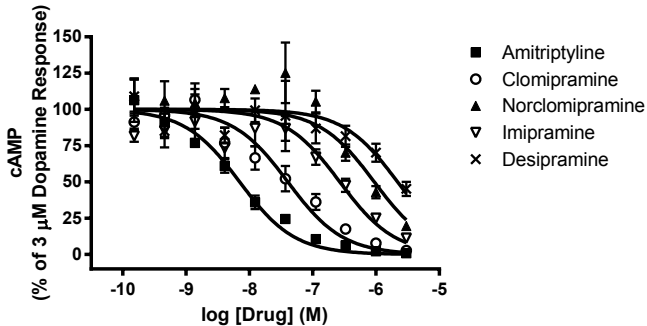


Figure 2

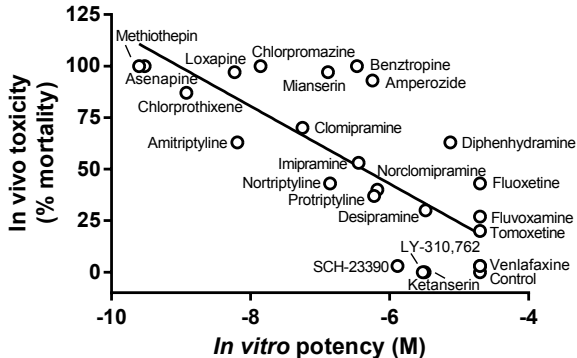


Figure 3

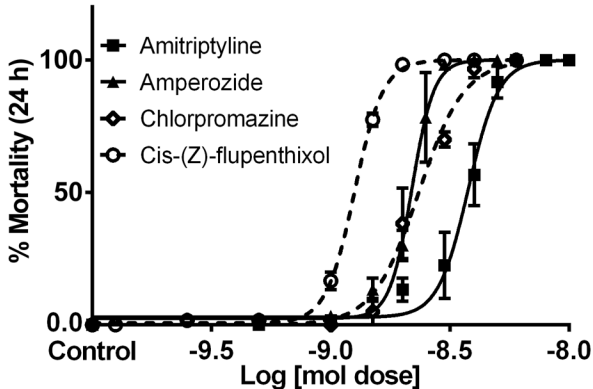
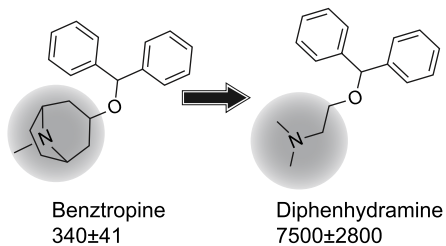
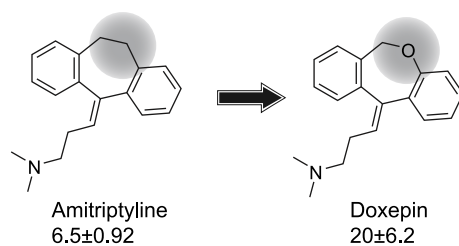


Figure 4

A Conformational rigidity

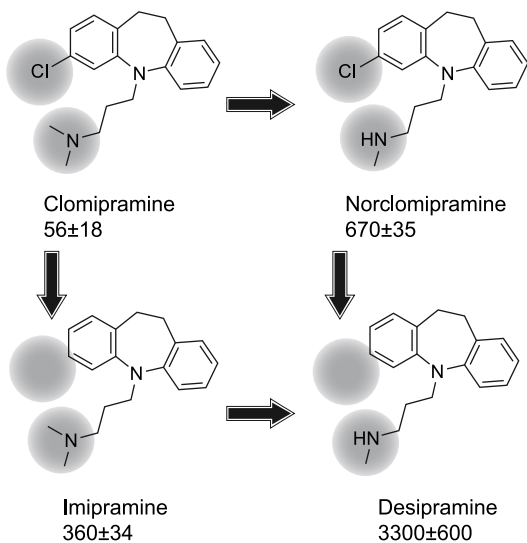


B Lipophilicity: "CH2" vs. "O"

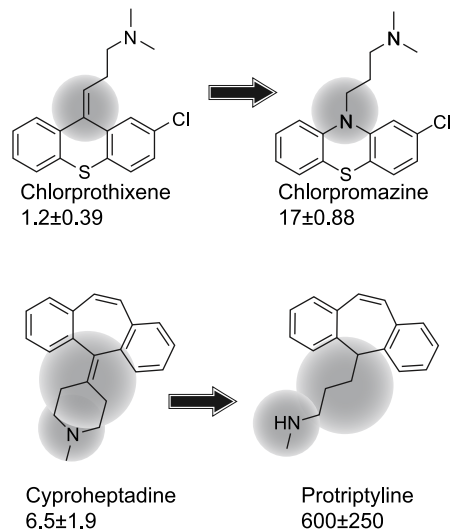


C Lipophilicity: 3° vs. 2° amine

Halide substitution



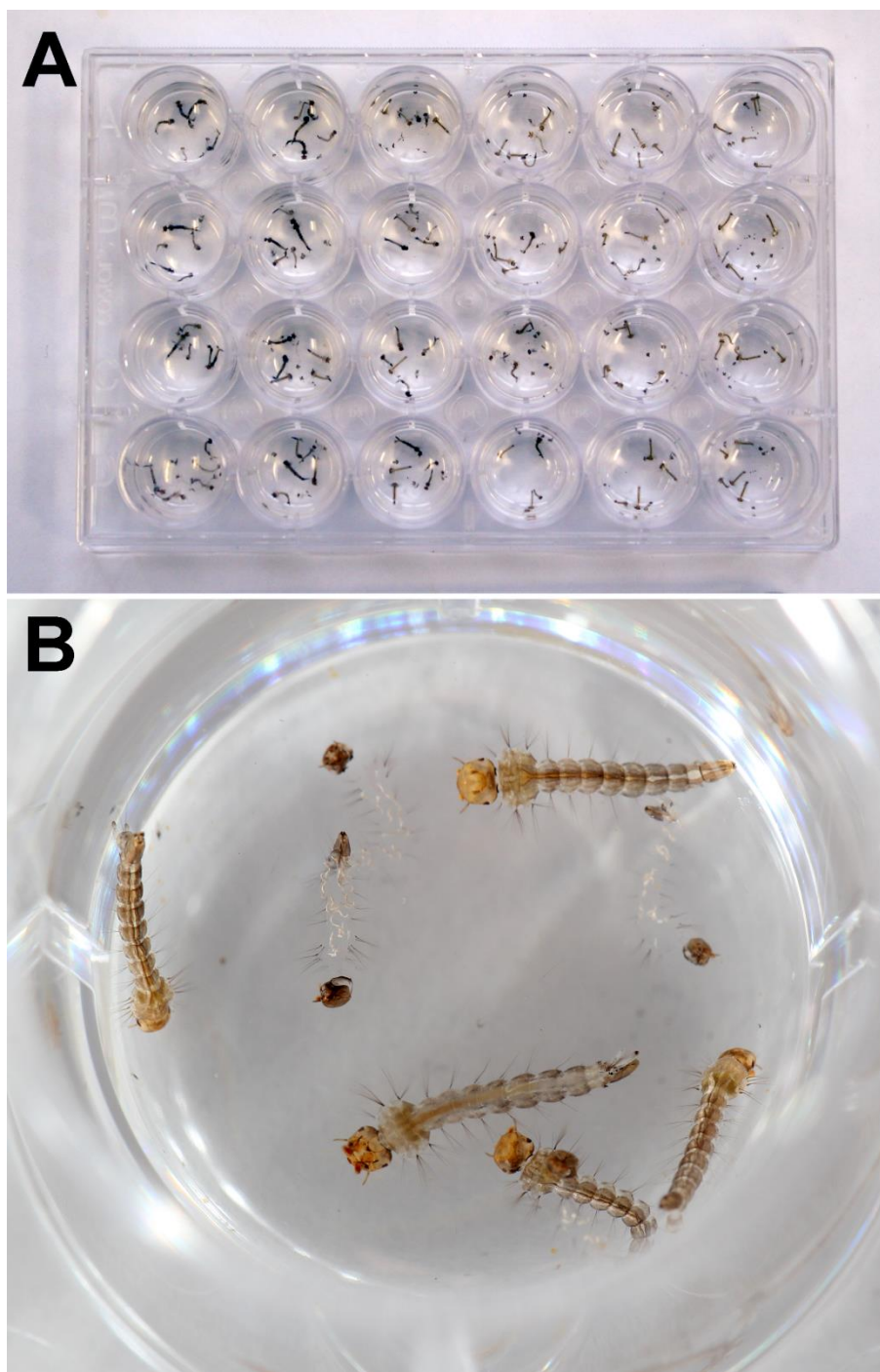
D Combined lipophilicity and conformational rigidity



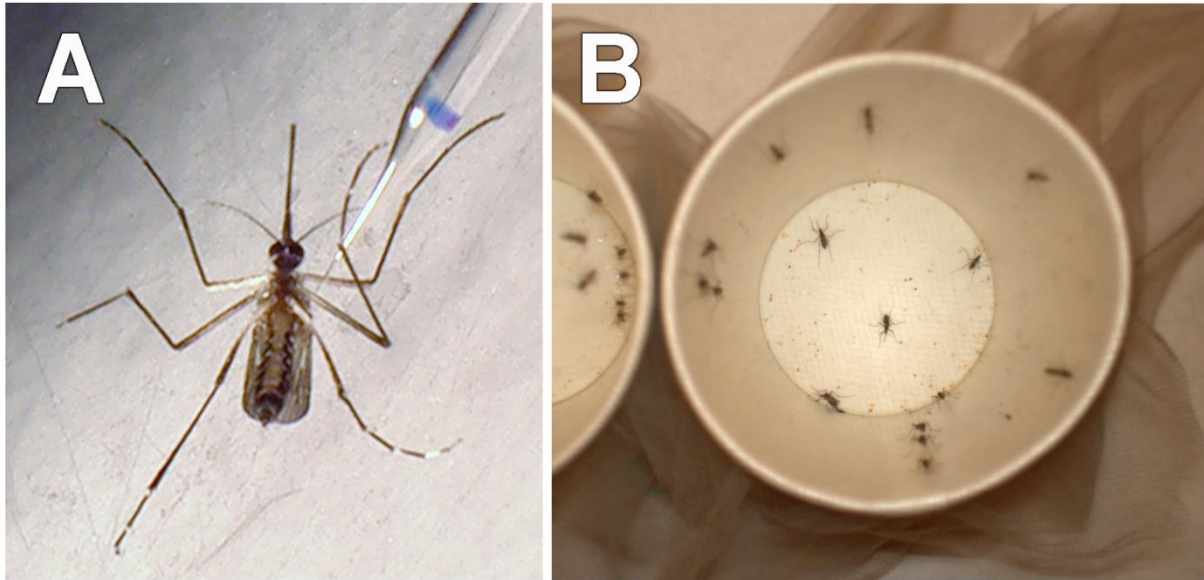
Evaluation of *AaDOP2* receptor antagonists reveals antidepressants and antipsychotics as novel lead molecules for control of the yellow fever mosquito, *Aedes aegypti*

Jason M. Conley, Jason M. Meyer, Andrew B. Nuss, Trevor B. Doyle, Sergey N. Savinov, Catherine A. Hill, and Val J. Watts

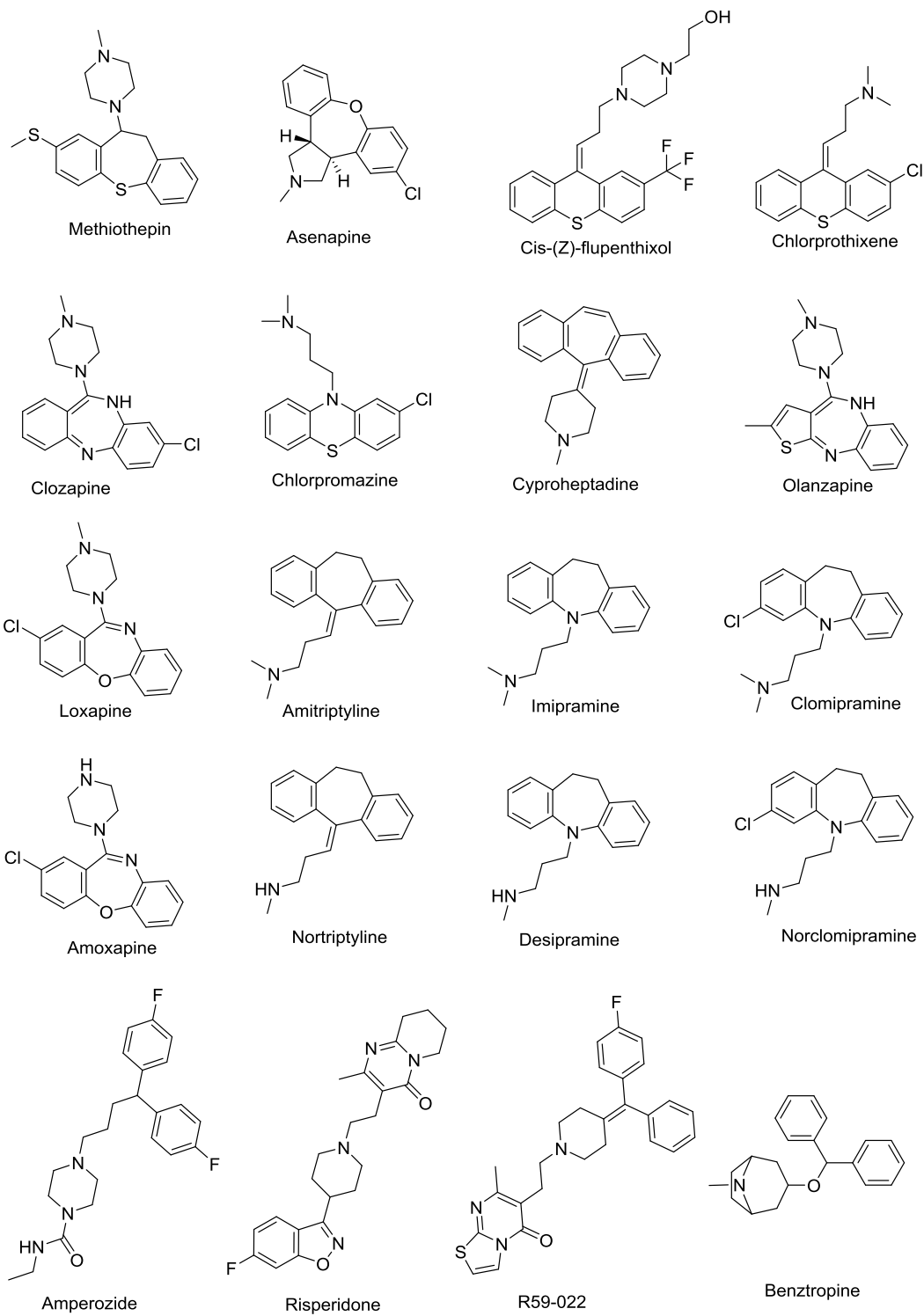
Journal of Pharmacology and Experimental Therapeutics



Supplemental Figure 1. Photographs depicting a representative setup of the *in vivo* larval antagonist screening assays with (A) the 24-well plate setup containing *A. aegypti* larvae, and (B) a close-up of an individual well within the 24-well plate containing five *A. aegypti* larvae. Photo credit: A.B. Nuss, Purdue University.



Supplemental Figure 2. Photographs depicting a representative setup of the *in vivo* adult antagonist assays showing (A) an *A. aegypti* adult female injection with a pulled glass capillary needle, and (B) a coffee cup cage fitted with a lace screen containing injected *A. aegypti* adult females. Photo credit: A.B. Nuss, Purdue University.



Supplemental Figure 3. Chemical structures for AαDOP2 receptor antagonists