

For Journal of Pharmacology and Experimental Therapeutics (revised)

6 April 2020

Efficacy of crizotinib and selumetinib combination treatment in an *in vivo* xenograft model of ALK-positive lung cancer

Shrestha, N., Bland, A., Bower, R.L., Rosengren, R.J., Ashton, J.C¹.

Department of Pharmacology & Toxicology, School of Biomedical Sciences, University of Otago, Dunedin, New Zealand.

1. Corresponding author

+6434793040

john.ashton@otago.ac.nz

Running Head: Efficacy of crizotinib and selumetinib combination therapy.

Keywords: Crizotinib; Selumetinib; ALK-positive lung cancer; Combination treatment

Table S1: Body weight and organ weight of Balb/c mice

	Vehicle control	Crizotinib 25 mg/kg	Selumetinib 25mg/kg	Crizotinib+ Selumetinib
Body Weight Change (g)	-1.23 ± 0.35	-0.28 ± 0.41	0.55 ± 0.73	0.8 ± 0.23
Organ Weight (% of Body Weight)				
Liver	5.60 ± 0.22	5.22 ± 0.22	4.92 ± 0.76	5.33 ± 0.20
Spleen	0.27 ± 0.008	0.28 ± 0.02	0.28 ± 0.02	0.29 ± 0.01
Lungs	1.15 ± 0.14	0.99 ± 0.15	0.87 ± 0.32	0.89 ± 0.08
Heart	0.61 ± 0.083	0.57 ± 0.06	0.55 ± 0.04	0.55 ± 0.03
Kidneys	2.02 ± 0.04	2.02 ± 0.09	1.89 ± 0.09	1.92 ± 0.03
Testes	0.70 ± 0.14	0.65 ± 0.05	0.93 ± 0.25	0.69 ± 0.01

Statistical significance was determined by one-way- ANOVA with Bonferroni post-hoc test. All data are presented as mean ± SEM from n = 6. Multiple comparison among treatment groups and vehicle did not show significant difference in both body and organ weight (p > 0.05).

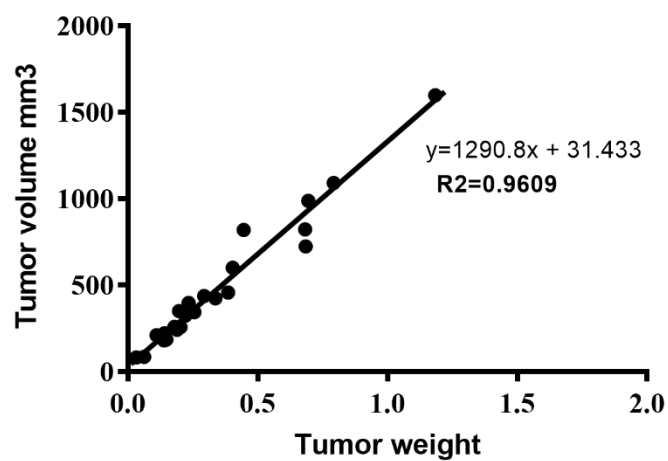


Figure S1: Correlation between tumour volume and tumour weight.

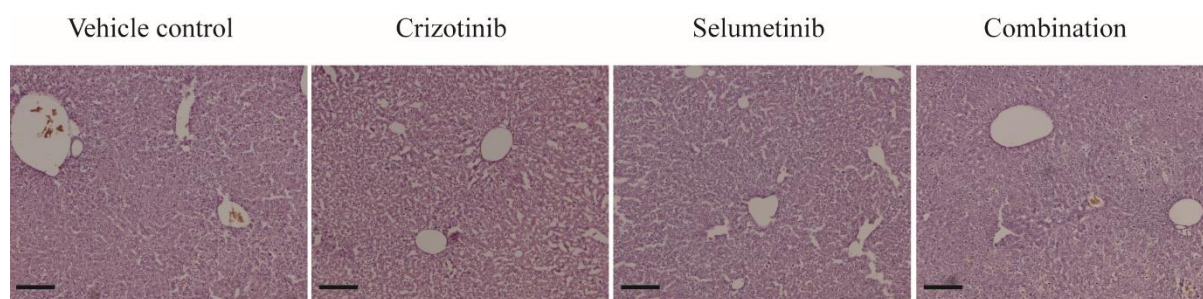


Figure S2 : H and E staining of liver sections. Representative micrographs taken at 10x. Scale bar: 100 μ m.