

## **Supplementary Data**

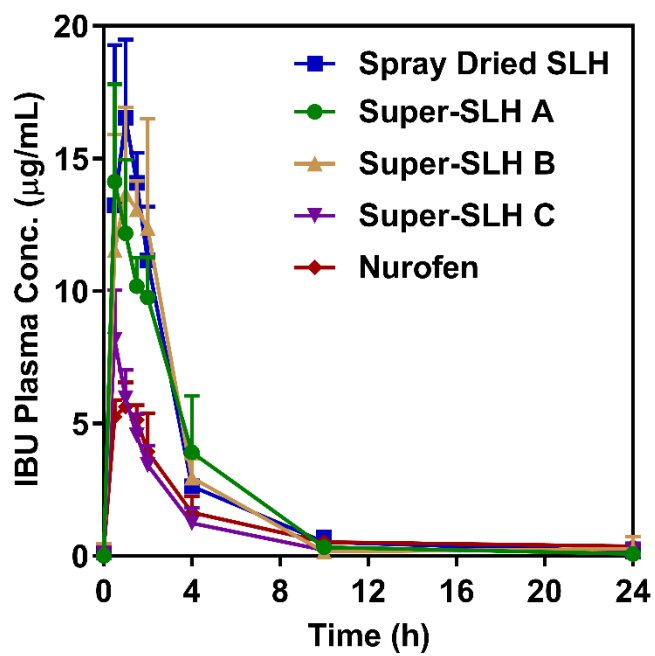
### **Supersaturated silica-lipid hybrid (super-SLH) oral drug delivery systems: Balancing drug loading and in vivo performance**

**Hayley B. Schultz, Miia Kovalainen, Karl F. Peressin, Nicky Thomas and Clive A. Prestidge**

University of South Australia, School of Pharmacy and Medical Science, Adelaide, South Australia 5000,  
Australia

ARC Centre of Excellence in Convergent Bio-Nano Science and Technology, University of South  
Australia, Mawson Lakes Campus, Mawson Lakes, South Australia 5095, Australia

University of Oulu, Research Unit of Biomedicine, 90014 Oulu University, Finland



**Supplemental Figure 1:** PK profiles of IBU formulations orally administered to Sprague-Dawley rats at a dose of 10 mg/kg over 24 h (mean  $\pm$  SE, n=4 or 5 (Nurofen)).

**Supplemental Table 1:** The IBU formulations AUCs for *in vitro* dissolution and *in vivo* PK studies (mean  $\pm$  SE, n=4 or 5 (Nurofen)).

	Nurofen	Spray-dried SLH	Super-SLH A	Super-SLH B	Super-SLH C
<b><i>In vitro</i> AUC<sub>0-1 h</sub> (<math>\mu\text{g/mL}\cdot\text{h}</math>)</b>	19.8 $\pm$ 1.0	38.8 $\pm$ 0.6	26.5 $\pm$ 0.8	25.4 $\pm$ 0.8	16.9 $\pm$ 1.9
<b><i>In vivo</i> AUC<sub>0-10 h</sub> (<math>\mu\text{g/mL}\cdot\text{h}</math>)</b>	21.1 $\pm$ 2.5	48.0 $\pm$ 5.1	47.1 $\pm$ 7.1	47.0 $\pm$ 5.3	19.3 $\pm$ 2.3