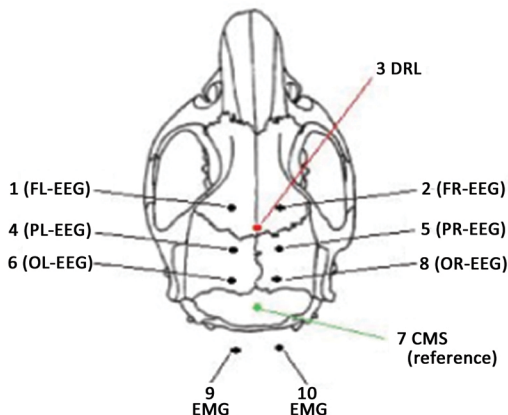


Title: N-aryl piperazine metabotropic glutamate receptor 5 positive allosteric modulators possess efficacy in pre-clinical models of NMDA hypofunction and cognitive enhancement

Authors: K.J. Gregory*, E.J. Herman*, A.J. Ramsey, A.S. Hammond, N. E. Byun, S.R. Stauffer, J.T. Manka, S. Jadhav, T.M. Bridges, C.D. Weaver, C.M. Niswender, T. Steckler, W.H. Drinkenburg, A. Ahnaou, H. Lavreysen, G. Macdonald, J. M. Bartolomé, C. Mackie, M. Caron, T. Daigle, C.W. Lindsley, P.J. Conn, C.K. Jones

Journal: J. Pharmacol. Exp. Ther.



Supplementary Figure 1: Electrode placement for pharmacoeEG recordings

Eight stainless steel fixing screws (diameter 1 mm) were inserted bilaterally in the left and right hemisphere along the anterior-posterior axis at the locations (FL, FR; PL, PR and OL, OR, respectively). All electrodes were stereotactically placed (AP +4 mm, L \pm 2 mm; AP -2 mm, L \pm 2 mm and AP -6 mm, L \pm 2 mm from bregma; respectively) and referenced to the same ground electrode placed midline above the cerebellum. The incisor bar was -5 mm under the center of the ear bar according to the stereotactic atlas of Paxinos and Watson (1998).