

JPET # 252833

Proximal Tubule  $\beta_2$  Adrenergic Receptor Mediates Formoterol-Induced Recovery of Mitochondrial and  
Renal Function After Ischemia-Reperfusion Injury

Robert B. Cameron,<sup>1,2</sup> Whitney S. Gibbs,<sup>1,2</sup> Siannah R. Miller,<sup>2</sup> Tess V. Dupre,<sup>2</sup> Judit Megyesi,<sup>3</sup> Craig C.  
Beeson,<sup>1</sup> Rick G. Schnellmann<sup>2,4</sup>

Primary Laboratory: Schnellmann Laboratory, University of Arizona

RBC, WSG, CCB- Department of Drug Discovery and Biomedical Sciences, Medical University of South  
Carolina, Charleston, SC

RBC, WSG, SRM, TVD, RGS- College of Pharmacy, University of Arizona, Tucson, AZ

JM- Department of Medicine, University of Arkansas for Medical Sciences, Little Rock, AR

RGS-Southern Arizona VA Healthcare System, Tucson, AZ

JPET # 252833

Running title: RPTC  $\beta_2$  adrenergic receptor and AKI

Corresponding Author: Rick G. Schnellmann

Drachman Hall B307B

1295 N. Martin

Tucson, AZ 85721

schnell@pharmacy.arizona.edu

Number of Text Pages: 7

Number of Tables: 0

Number of Figures: 4

Number of References: 40

Words in Abstract: 229

Words in Introduction: 560

Words in Discussion: 1,151

Abbreviations:

AKI- acute kidney injury

RPTC- renal proximal tubule cell

MB- mitochondrial biogenesis

$\beta_2$ AR-beta-2 adrenergic receptor

SCr- serum creatinine

KIM-1- kidney injury marker-1

ETC- electron transport chain

NDUFS1- NADH :ubiquinone oxidoreductase core subunit S1

COX1- cytochrome c oxidase subunit 1

Mfn2- mitofusin 2

Drp1- Dynamin-related protein 1

JPET # 252833

Recommended Section Assignment: Cardiovascular

JPET # 252833

Abstract:

Acute kidney injury (AKI) is the rapid loss of renal function following an insult and renal proximal tubule cells (RPTC) are central to the pathogenesis of AKI. The  $\beta_2$  adrenergic receptor ( $\beta_2$ AR) agonist formoterol accelerates recovery of renal function in mice following ischemia-reperfusion injury (IRI) with associated rescue of mitochondrial proteins. However, the cell type responsible for this recovery remains unknown. The role of RPTC in formoterol-induced recovery of renal function was assessed in a proximal tubule-specific knockout of the  $\beta_2$ AR ( $\gamma$ GT-Cre:ADRB2<sup>Flox/Flox</sup>). These mice and wild-type controls (ADRB2<sup>Flox/Flox</sup>) were subjected to renal IRI, followed by once daily dosing of formoterol beginning 24 h post-IRI and euthanized at 144 h. Compared to ADRB2<sup>Flox/Flox</sup> mice,  $\gamma$ GT-Cre:ADRB2<sup>Flox/Flox</sup> mice had decreased renal cortical mRNA expression of the  $\beta_2$ AR. After IRI, formoterol treatment restored renal function in ADRB2<sup>Flox/Flox</sup> but not  $\gamma$ GT-Cre:ADRB2<sup>Flox/Flox</sup> mice as measured by serum creatinine, histopathology, and KIM-1 expression. Formoterol-treated ADRB2<sup>Flox/Flox</sup> mice exhibited recovery of mitochondrial proteins and DNA copy number, while  $\gamma$ GT-Cre:ADRB2<sup>Flox/Flox</sup> mice treated with formoterol did not. Analysis of mitochondrial morphology by transmission electron microscopy demonstrated that formoterol increased mitochondrial number and density in ADRB2<sup>Flox/Flox</sup> mice but not in  $\gamma$ GT-Cre:ADRB2<sup>Flox/Flox</sup> mice. These data demonstrate that proximal tubule  $\beta_2$ AR regulates renal mitochondrial homeostasis. Formoterol accelerates the recovery of renal function following AKI by activating proximal tubule  $\beta_2$ AR to induce mitochondrial biogenesis and demonstrates the overall requirement of RPTC in renal recovery.

JPET # 252833

## Introduction

Acute kidney injury (AKI) is a rapid loss of renal function that occurs in over 20% of hospitalized patients and has a mortality rate of 25%.(Hoste et al., 2015; Susantitaphong et al., 2013) AKI has numerous causes, including hypotension, nephrotoxic drug administration, and renal ischemia-reperfusion injury (IRI).(Moore et al., 2018) Unfortunately, treatment of AKI remains limited to supportive care and renal replacement therapy.

The difficulty in treating AKI is the numerous cell types involved, including immune cells,(Jang and Rabb, 2015) endothelial cells,(Molitoris, 2014) and the renal epithelium.(Liu et al., 2018) Renal proximal tubule cells (RPTC) are a highly oxidative and regenerative cell type that plays a central role in the pathogenesis of AKI.(Ralto and Parikh, 2016; Sekine et al., 2012) RPTC exhibit mitochondrial fragmentation and dysfunction with persistent suppression of mitochondrial biogenesis (MB) after AKI.(Brooks et al., 2009; Funk and Schnellmann, 2012; Tran et al., 2011) Transgenic mouse models have shown that decreased MB worsens AKI, while increased MB accelerates recovery.(Tran et al., 2016)

Drugs that increase MB accelerate recovery from AKI with concomitant rescue of mitochondrial protein expression and function.(Wills et al., 2012) One such drug is the FDA-approved  $\beta_2$  adrenergic receptor ( $\beta_2$ AR) agonist formoterol.(Wills et al., 2012) We reported that formoterol treatment restored renal function with concomitant increases in mitochondrial protein expression and function after AKI in mice.(Jesinkey et al., 2014) Recently, we elucidated the mechanism of formoterol-induced MB in RPTC.(Cameron et al., 2017) Formoterol binding to the  $\beta_2$ AR results in the release of G $\beta\gamma$  heterodimer, the activation of Akt, the phosphorylation of eNOS, and increased soluble guanylyl cyclase activity and cGMP. This pathway increased PGC-1 $\alpha$ , the master regulator of MB,(Puigserver et al., 1998) with concomitant induction of MB.

Because the  $\beta_2$ AR is ubiquitously expressed (e.g. T cells, macrophages, neutrophils, endothelial cells and RPTC), it is not clear which cell(s) are responsible for formoterol induced MB and recovery of renal function following IR-induced AKI. The goal of this study was to determine the specific role of

JPET # 252833

RPTC  $\beta_2$ AR in AKI and formoterol-induced recovery of mitochondrial and renal function using a mouse with proximal tubule specific deletion of the  $\beta_2$ AR.(Iwano et al., 2002)

### **Materials and Methods.**

**Animal Use.** ADRB2<sup>Flox/Flox</sup> mice(Hinoi et al., 2008) were a generous gift from Drs. Zhi Zhong and Gerard Karsenty and were mated with  $\gamma$ GT-Cre mice,(Iwano et al., 2002) a generous gift from Dr. Leslie Gewin, to generate  $\gamma$ GT-Cre:ADRB2<sup>Flox/Flox</sup> mice. These mice were generated on a C57Bl/6 background, and male 8-10 week old littermates were subjected to bilateral renal ischemia-reperfusion injury as previously described.(Funk and Schnellmann, 2012) Dosing was initiated 24 hours after reperfusion, and mice were given a daily injection of 0.3 mg/kg formoterol fumarate dihydrate (Sigma-Aldrich F9552) or vehicle (0.3% DMSO in normal saline) *via* intraperitoneal injection. Blood was collected by retro-orbital bleeding puncture and serum creatinine (SCr) was determined using the Creatinine Enzymatic Reagent Assay kit (Diazyme) according to manufacturer's protocol. All experiments were carried out in accordance with the recommendations in the Guide for the Care and Use of Laboratory Animals of the National Institutes of Health. All procedures were approved by the University of Arizona Institutional Animal Care and Use Committee and appropriate efforts were made to reduce animal suffering.

**Nucleic acid isolation and quantitative polymerase chain reaction.** RNA was extracted from frozen renal cortex in TRIzol isolated using a phenol-based centrifugation method (Life Technologies, Grand Island, NY). cDNA was reversed transcribed using the iScript Advanced cDNA Synthesis Kit (BioRad, Hercules, CA) and was added to a real-time SYBR green quantitative polymerase chain reaction master mix (BioRad). Changes in gene expression were calculated based on the  $\Delta$ - $\Delta$  threshold cycle method. Primers are reported in Supplemental Methods.

Mouse tail tips were lysed using DirectPCR Lysis reagent (Viagen). Genomic DNA was amplified using Promega 2X PCR Master Mix in accordance with manufacturer's protocols. Amplified DNA was separated on a 2.5% agarose gel and visualized by ethidium bromide fluorescence. ADRB2<sup>Flox</sup>

JPET # 252833

alleles were distinguished from ADRB2<sup>+</sup> alleles based on fragment size as previously described. (Hinoi et al., 2008)

To measure mtDNA copy number, DNA was extracted from frozen renal cortex using the DNeasy Blood and Tissue kit (QIAGEN, Valencia, CA). PCR products were amplified from 5 ng of cellular DNA using a real-time SYBR green quantitative polymerase chain reaction master mix (BioRad). For estimation of mtDNA, the NADH dehydrogenase subunit 6 (ND6) gene was used and normalized to  $\beta$ -actin.

**Protein isolation and immunoblotting.** Frozen renal cortex was suspended in protein lysis buffer (1% Triton X-100, 150 mM NaCl, and 10 mM Tris-HCl, pH 7.4; 1 mM EDTA; 1 mM EGTA; 2 mM sodium orthovanadate; 0.2 mM phenylmethylsulfonyl fluoride; 1 mM HEPES, pH 7.6) containing protease inhibitors and phosphatase inhibitors (Sigma-Aldrich, St. Louis, MO). Following sonication, protein was quantified using a bicinchoninic acid assay, subjected to SDS-PAGE, transferred onto nitrocellulose membranes, and incubated with primary and secondary antibodies. Membranes were detected using chemiluminescence and processed using ImageJ (NIH, Bethesda, MD) software. Antibodies are reported in Supplemental Methods.

**Electron Microscopy.** Renal cortex was fixed and sectioned for transmission electron microscopy. Images were viewed by FEI Tecnai Spirit microscope operated at 100 kV and captured using an AMT 4 Mpixel camera. Mitochondrial count and morphology were analyzed using the Trainable Weka Segmentation plugin in ImageJ.

**Histopathology.** Kidney sections approximately 5–6 microns from animals at 144 hours after I/R or sham surgery were stained with hematoxylin and eosin and PAS, and the degree of morphologic changes was determined by light microscopy in a blinded fashion. Loss of brush border and necrosis were chosen as indicators of morphological damage to the kidney. These measures were evaluated on a scale from 0 to 4, which ranged from not present (0), mild (1), moderate (2), severe (3), and very severe (4).

**Statistical analysis.** Data are expressed as means  $\pm$  S.E.M. ( $N \geq 3$ ) for all experiments. Each N represents a different animal. Multiple comparisons of normally distributed data were analyzed by two-way analysis

JPET # 252833

of variance. Single comparisons were analyzed with a T-test where appropriate. The criterion for statistical differences was  $p < 0.05$  for all comparisons.

## Results

RPTC-specific deletion of the  $\beta_2$ AR in mice was achieved by breeding  $\gamma$ GT-Cre mice with  $ADRB2^{Flox/Flox}$  (WT) mice to create a  $\gamma$ GT-Cre: $ADRB2^{Flox/Flox}$  mouse (KO) (Figure 1A). The presence of  $ADRB2^{Flox}$  alleles was determined by DNA electrophoresis. Tail tips were digested and genomic DNA was amplified. As previously described, (Hinoi et al., 2008) the  $ADRB2^{Flox}$  allele has a longer sequence than the  $ADRB2^+$  allele, allowing for discrimination of  $ADRB2^{+/+}$  (one low bands),  $ADRB2^{Flox/+}$  (one high band and one low band), and  $ADRB2^{Flox/Flox}$  (one high band) mice. Deletion of  $ADRB2$  and appropriate expression of the Cre transgene was assessed using qPCR using renal cortical DNA. Expression of  $ADRB2$  was assessed by RT-qPCR using renal cortical mRNA. Consistent with loss of  $\beta_2$ AR in RPTC, KO mice had an 80% reduction in renal cortical  $ADRB2$  DNA and mRNA expression and increased  $\gamma$ GT-Cre DNA expression relative to WT mice (Figures 1B-D).

The role of RPTC  $\beta_2$ AR on recovery from AKI was determined in KO and WT mice subjected to renal IRI followed by treatment with vehicle or formoterol (0.3 mg/kg, i.p) after 24 h and then daily for 144 h. WT and KO mice had similar increases in SCr at 24 h, indicating no difference in initial injury (Figure 2A). As previously described, (Jesinkey et al., 2014) WT mice treated with formoterol exhibited recovery from AKI at 144 h as measured by decreases in SCr and renal cortical KIM-1 protein (Figures 2B, 2F). In contrast, KO mice treated with formoterol did not exhibit decreases in SCr and renal cortical KIM-1 at 144 h. These findings were confirmed by histopathology in that formoterol-treated WT mice had less necrosis than vehicle-treated animals, while formoterol failed to decrease necrosis in KO mice at 144 h (Figure 2C-D). Together, these findings provide evidence that following AKI, formoterol exerts its effects on renal recovery by activating the RPTC  $\beta_2$ AR.

RPTC have high mitochondrial content to maintain proper solute transport across the tubular lumen. (Chevalier, 2016; Nakamura et al., 2014; Ralto and Parikh, 2016) Following AKI, MB is



JPET # 252833

persistently suppressed and recovery of mitochondrial content is associated with recovery of renal function and improved outcomes.(Tran et al., 2011) The effects of RPTC  $\beta_2$ AR on mitochondrial content were assessed by measuring mtDNA and mitochondrial proteins using qPCR and immunoblot analysis, respectively. Formoterol restored mtDNA copy number in WT but not KO mice after IRI (Figure 3A). Similarly, KO mice subjected to IRI and treated with formoterol demonstrated no recovery of nuclear-encoded NDUFS1 and the mitochondrial-encoded COX1, electron transport chain (ETC) proteins and markers of MB (Figure 3B). Thus, activation of RPTC  $\beta_2$ AR by formoterol rescues markers of MB following AKI. Interestingly, KO shams had elevated expression of NDUFS1, which suggests that the  $\beta_2$ AR may regulate mitochondrial homeostasis in healthy RPTC.

In addition to the restoration of ETC proteins, formoterol restored mitochondrial fission and fusion proteins Drp1 and Mfn2, respectively, in WT but not KO mice (Figure 3C). Because Drp1 and Mfn2 affect mitochondrial dynamics, we assessed mitochondrial morphology using transmission electron microscopy. Electron micrographs were obtained and mitochondrial morphology and number were quantified using ImageJ and the Trainable Weka Segmentation plugin. We observed no changes in mitochondrial form factor or individual mitochondrial area, suggesting that formoterol did not affect mitochondrial fission and fusion at 144 h (Figure 4A-C). However, in WT mice, renal cortical mitochondrial number and total mitochondria area decreased after IRI and formoterol restored these parameters, indicating that formoterol induced MB (Figure 4D-E). Sham-operated KO mice had fewer mitochondria, providing evidence that RPTC  $\beta_2$ AR regulates mitochondrial homeostasis under physiological conditions. Together, these data indicate that formoterol activates RPTC  $\beta_2$ AR to induce MB and accelerate recovery of renal function following AKI.

## **Discussion.**

We demonstrated that RPTC  $\beta_2$ AR is responsible for the effects of formoterol on renal function following AKI. Previous studies in septic AKI demonstrated that overexpression or activation of the  $\beta_2$ AR by terbutaline prevent apoptosis, decrease injury, and promote recovery of renal

JPET # 252833

function.(Nakamura et al., 2005; Nakamura et al., 2004; Nakamura et al., 2003; Nakamura et al., 2010) However, in these studies, excessive activation of the  $\beta_2$ AR decreased serum creatinine.(Nakamura et al., 2007) We have shown that selective and limited activation of the  $\beta_2$ AR by formoterol accelerates recovery from IR-induced AKI,(Jesinkey et al., 2014) and in these studies, we have shown that formoterol does so by activating RPTC  $\beta_2$ AR. In mice lacking RPTC  $\beta_2$ AR, formoterol-treatment failed to rescue serum creatinine, KIM-1 protein expression, and tubular necrosis and only partially restored brush border after IR.

Previous studies have identified RPTC as central mediators of AKI. Following injury, RPTC upregulate inflammatory mediators such as toll-like receptors, chemokines, and cytokines.(Bonventre, 2014) Selective injury of RPTC using inducible diphtheria toxin was sufficient to cause AKI in mice and subsequent renal fibrosis, and the degree of RPTC death correlated with AKI severity.(Grgic et al., 2012; Takaori et al., 2016) Conversely, increasing RPTC proliferation by treatment with growth factors was associated with enhanced recovery from AKI in rats and dogs.(Humes et al., 1989; Miller et al., 1994a; b; Petrincic et al., 1996) In this study, we show that mice lacking RPTC  $\beta_2$ AR fail to recover renal function following treatment with formoterol. These data underscore the importance of RPTC and competent RPTC signaling in the pharmacologic treatment of AKI.

The  $\gamma$ GT1 promoter has been used by several groups to generate proximal tubule-specific deletions of target genes.(Chen et al., 2012; Han et al., 2016; Inoue et al., 2012; Iwano et al., 2002; Tiwari et al., 2013; Zhou et al., 2018) Although  $\gamma$ GT1 can also be expressed in hepatocytes, it is expressed in much higher levels in proximal tubule cells,(Hanigan et al., 2015) and  $\gamma$ GT-Cre mice primarily express Cre in the kidney.(Iwano et al., 2002) Further work showed that  $\gamma$ GT-Cre only deletes floxed genes in proximal tubule cells.(Chen et al., 2012; Han et al., 2016; Inoue et al., 2012; Tiwari et al., 2013) While  $\gamma$ GT isoforms can be expressed by other cell types,(Hanigan et al., 2015) particularly in pathologic states such as polycystic kidney disease(Starremans et al., 2008) and epithelial-mesenchymal transition(Inoue et

JPET # 252833

al., 2010), the  $\gamma$ GT-Cre mouse generates a proximal tubule-specific deletion of floxed genes without any Cre-dependent effects on renal function.

Despite the numerous pharmacologic modulators for the  $\beta_2$ AR, there is a paucity of research on its effects in the kidney, particularly in AKI. In our studies, we found no difference in renal function at 24 h between WT and KO mice, suggesting that proximal tubule deletion of the  $\beta_2$ AR does not impact renal function in terms of the initial injury after IR. Furthermore, we saw no difference in the renal function or histopathology of sham-operated  $ADRB2^{\text{Flox/Flox}}$  and  $\gamma$ GT-Cre: $ADRB2^{\text{Flox/Flox}}$  mice. Previous work has shown that while increased  $\beta_2$ AR expression enhances glomerular filtration rate,(Nakamura et al., 2004) inhibition of the  $\beta_2$ AR does not affect renal function but does sensitize animals to septic AKI.(Nakamura et al., 2009) Other groups have shown that whole-body deletion of the  $\beta_1$ AR and  $\beta_2$ AR reduces baseline renin levels but have a normal response to stimulation.(Chen et al., 2010; Neubauer et al., 2011) Additionally, deletion of  $\beta_2$ AR decreases the activity of a collecting duct-macrophage axis following transverse aortic constriction, although renal function was not measured in these experiments.(Fujiu et al., 2017) These effects on renal signaling are likely due to the effects of  $\beta_2$ AR inhibition on other cell types than the proximal tubule cell.

Proper balance of MB, fission, and fusion is important for recovery from AKI. Deletion of PGC- $1\alpha$ , a key transcriptional regulator of MB, worsens RPTC injury while its overexpression promotes MB to accelerate recovery.(Tran et al., 2011; Tran et al., 2016) Pharmacologic induction of MB accelerates recovery of mitochondrial and renal function following AKI.(Collier and Schnellmann, 2017; Collier et al., 2016; Jesinkey et al., 2014) Formoterol-treated mice lacking the  $\beta_2$ AR in RPTC failed to recover mtDNA copy number, mitochondrial protein expression, and mitochondrial number and area following AKI. In addition, sham-operated KO mice had fewer total mitochondria without a decrease in mtDNA copy number and elevated NDUFS1 protein expression. These data provide evidence that the  $\beta_2$ AR plays a role in RPTC mitochondrial homeostasis in healthy mice. While previous studies have shown that formoterol increases mRNA, protein, and functional markers of mitochondria in the kidney,(Jesinkey et

JPET # 252833

al., 2014; Wills et al., 2012) this study shows for the first time that formoterol induces *bona fide* MB in RPTC.

In addition to MB, mitochondrial fission and fusion are known to play varying roles in AKI. Because Drp1 and Mfn2 are regulated by the PGC-1 $\alpha$ , (Dabrowska et al., 2015; Martin et al., 2014; Soriano et al., 2006) and expression of both proteins is restored following formoterol-treatment in WT mice, the recovery of Mfn2 and Drp1 is linked to formoterol-induced activation of PGC-1 $\alpha$ . Drp1 is thought to be detrimental following injury by enhancing mitochondrial fragmentation, reactive oxygen species production, and apoptosis. (Tang et al., 2013) Following AKI, mitochondrial fragmentation is increased in RPTC in a Drp1-dependent manner (Brooks et al., 2009), and decreased Mfn2 expression potentiates this fragmentation. (Gall et al., 2012; Tsushida et al., 2018) As such, formoterol activation of  $\beta_2$ AR and restoration of Drp1 and Mfn2 expression may improve mitochondrial dynamics and contribute to recovery of mitochondrial function after IRI by affecting mitochondrial dynamics. However, we observed no changes in mitochondrial form factor or individual mitochondrial area among our treatment groups, suggesting that the effects of formoterol on mitochondrial dynamics are secondary to those of formoterol on MB.

In summary, these data underscore the importance of RPTC mitochondria as a therapeutic target, that  $\beta_2$ AR regulates renal mitochondrial homeostasis, and that GPCR ligands such as formoterol can induce MB to accelerate recovery from renal function. Since they represent such a large portion of the pharmacopeia, identification of more GPCR ligands that can induce MB in RPTC will provide a greater number of potential therapeutics for AKI.

#### **Acknowledgements.**

We would like to thank Dr. Zhi Zhong for her assistance in initial establishment of the mouse colony.

#### **Author Contributions.**

Participated in research design: Cameron, Beeson, Schnellmann

Conducted experiments: Cameron, Gibbs, Miller, Dupre, Megyesi

JPET # 252833

Performed data analysis: Cameron, Miller

Wrote or contributed to the writing of the manuscript: Cameron, Miller, Dupre, Schnellmann

## References

- Bonventre JV (2014) Primary proximal tubule injury leads to epithelial cell cycle arrest, fibrosis, vascular rarefaction, and glomerulosclerosis. *Kidney Int Suppl (2011)* **4**:39-44.
- Brooks C, Wei Q, Cho SG and Dong Z (2009) Regulation of mitochondrial dynamics in acute kidney injury in cell culture and rodent models. *J Clin Invest* **119**:1275-1285.
- Cameron RB, Beeson CC and Schnellmann RG (2017) Structural and pharmacological basis for the induction of mitochondrial biogenesis by formoterol but not clenbuterol. *Sci Rep* **7**:10578.
- Chen J, Chen JK, Nagai K, Plieth D, Tan M, Lee TC, Threadgill DW, Neilson EG and Harris RC (2012) EGFR signaling promotes TGFbeta-dependent renal fibrosis. *J Am Soc Nephrol* **23**:215-224.
- Chen L, Kim SM, Eisner C, Oppermann M, Huang Y, Mizel D, Li L, Chen M, Sequeira Lopez ML, Weinstein LS, Gomez RA, Schnermann J and Briggs JP (2010) Stimulation of renin secretion by angiotensin II blockade is Gsalpha-dependent. *J Am Soc Nephrol* **21**:986-992.
- Chevalier RL (2016) The proximal tubule is the primary target of injury and progression of kidney disease: role of the glomerulotubular junction. *Am J Physiol Renal Physiol* **311**:F145-161.
- Collier JB and Schnellmann RG (2017) Extracellular Signal-Regulated Kinase 1/2 Regulates Mouse Kidney Injury Molecule-1 Expression Physiologically and Following Ischemic and Septic Renal Injury. *J Pharmacol Exp Ther* **363**:419-427.
- Collier JB, Whitaker RM, Eblen ST and Schnellmann RG (2016) Rapid Renal Regulation of Peroxisome Proliferator-activated Receptor gamma Coactivator-1alpha by Extracellular Signal-Regulated Kinase 1/2 in Physiological and Pathological Conditions. *J Biol Chem* **291**:26850-26859.
- Dabrowska A, Venero JL, Iwasawa R, Hankir MK, Rahman S, Boobis A and Hajji N (2015) PGC-1alpha controls mitochondrial biogenesis and dynamics in lead-induced neurotoxicity. *Aging (Albany NY)* **7**:629-647.

JPET # 252833

- Fujiu K, Shibata M, Nakayama Y, Ogata F, Matsumoto S, Noshita K, Iwami S, Nakae S, Komuro I, Nagai R and Manabe I (2017) A heart-brain-kidney network controls adaptation to cardiac stress through tissue macrophage activation. *Nat Med* **23**:611-622.
- Funk JA and Schnellmann RG (2012) Persistent Disruption of Mitochondrial Homeostasis after Acute Kidney Injury. *Am J Physiol Renal Physiol* **302**:F853-864.
- Gall JM, Wang Z, Liesa M, Molina A, Havasi A, Schwartz JH, Shirihai O, Borkan SC and Bonegio RG (2012) Role of mitofusin 2 in the renal stress response. *PLoS One* **7**:e31074.
- Grgic I, Campanholle G, Bijol V, Wang C, Sabbisetti VS, Ichimura T, Humphreys BD and Bonventre JV (2012) Targeted proximal tubule injury triggers interstitial fibrosis and glomerulosclerosis. *Kidney Int* **82**:172-183.
- Han X, Yang J, Li L, Huang J, King G and Quarles LD (2016) Conditional Deletion of Fgfr1 in the Proximal and Distal Tubule Identifies Distinct Roles in Phosphate and Calcium Transport. *PLoS ONE* **11**:e0147845.
- Hanigan MH, Gillies EM, Wickham S, Wakeham N and Wirsig-Wiechmann CR (2015) Immunolabeling of gamma-glutamyl transferase 5 in normal human tissues reveals that expression and localization differ from gamma-glutamyl transferase 1. *Histochem Cell Biol* **143**:505-515.
- Hinoi E, Gao N, Jung DY, Yadav V, Yoshizawa T, Myers MG, Jr., Chua SC, Jr., Kim JK, Kaestner KH and Karsenty G (2008) The sympathetic tone mediates leptin's inhibition of insulin secretion by modulating osteocalcin bioactivity. *J Cell Biol* **183**:1235-1242.
- Hoste EA, Bagshaw SM, Bellomo R, Cely CM, Colman R, Cruz DN, Edipidis K, Forni LG, Gomersall CD, Govil D, Honore PM, Joannes-Boyau O, Joannidis M, Korhonen AM, Lavrentieva A, Mehta RL, Palevsky P, Roessler E, Ronco C, Uchino S, Vazquez JA, Vidal Andrade E, Webb S and Kellum JA (2015) Epidemiology of acute kidney injury in critically ill patients: the multinational AKI-EPI study. *Intensive Care Med* **41**:1411-1423.

JPET # 252833

- Humes HD, Cieslinski DA, Coimbra TM, Messana JM and Galvao C (1989) Epidermal growth factor enhances renal tubule cell regeneration and repair and accelerates the recovery of renal function in postischemic acute renal failure. *J Clin Invest* **84**:1757-1761.
- Inoue T, Suzuki H and Okada H (2012) Targeted expression of a pan-caspase inhibitor in tubular epithelium attenuates interstitial inflammation and fibrogenesis in nephritic but not nephrotic mice. *Kidney Int* **82**:980-989.
- Inoue T, Takenaka T, Hayashi M, Monkawa T, Yoshino J, Shimoda K, Neilson EG, Suzuki H and Okada H (2010) Fibroblast expression of an IkappaB dominant-negative transgene attenuates renal fibrosis. *J Am Soc Nephrol* **21**:2047-2052.
- Iwano M, Plieth D, Danoff TM, Xue C, Okada H and Neilson EG (2002) Evidence that fibroblasts derive from epithelium during tissue fibrosis. *J Clin Invest* **110**:341-350.
- Jang HR and Rabb H (2015) Immune cells in experimental acute kidney injury. *Nat Rev Nephrol* **11**:88-101.
- Jesinkey SR, Funk JA, Stallons LJ, Wills LP, Megyesi JK, Beeson CC and Schnellmann RG (2014) Formoterol Restores Mitochondrial and Renal Function after Ischemia-Reperfusion Injury. *J Am Soc Nephrol* **25**:1157-1162.
- Liu BC, Tang TT, Lv LL and Lan HY (2018) Renal tubule injury: a driving force toward chronic kidney disease. *Kidney Int* **93**:568-579.
- Martin OJ, Lai L, Soundarapandian MM, Leone TC, Zorzano A, Keller MP, Attie AD, Muoio DM and Kelly DP (2014) A role for peroxisome proliferator-activated receptor gamma coactivator-1 in the control of mitochondrial dynamics during postnatal cardiac growth. *Circ Res* **114**:626-636.
- Miller SB, Martin DR, Kissane J and Hammerman MR (1994a) Hepatocyte growth factor accelerates recovery from acute ischemic renal injury in rats. *Am J Physiol* **266**:F129-134.
- Miller SB, Martin DR, Kissane J and Hammerman MR (1994b) Rat models for clinical use of insulin-like growth factor I in acute renal failure. *Am J Physiol* **266**:F949-956.

JPET # 252833

- Molitoris BA (2014) Therapeutic translation in acute kidney injury: the epithelial/endothelial axis. *J Clin Invest* **124**:2355-2363.
- Moore PK, Hsu RK and Liu KD (2018) Management of Acute Kidney Injury: Core Curriculum 2018. *Am J Kidney Dis*.
- Nakamura A, Imaizumi A, Niimi R, Yanagawa Y, Kohsaka T and Johns EJ (2005) Adenoviral delivery of the beta2-adrenoceptor gene in sepsis: a subcutaneous approach in rat for kidney protection. *Clin Sci* **109**:503-511.
- Nakamura A, Imaizumi A, Yanagawa Y, Kohsaka T and Johns EJ (2004) beta(2)-Adrenoceptor activation attenuates endotoxin-induced acute renal failure. *J Am Soc Nephrol* **15**:316-325.
- Nakamura A, Imaizumi A, Yanagawa Y, Niimi R, Kohsaka T and Johns EJ (2003) Beta2-adrenoceptor activation inhibits Shiga toxin2-induced apoptosis of renal tubular epithelial cells. *Biochem Pharmacol* **66**:343-353.
- Nakamura A, Niimi R, Imaizumi A and Yanagawa Y (2007) Renal effects of beta2-adrenoceptor agonist and the clinical analysis in children. *Pediatr Res* **61**:129-133.
- Nakamura A, Niimi R and Yanagawa Y (2009) Renal beta(2)-adrenoceptor modulates the lipopolysaccharide transport system in sepsis-induced acute renal failure. *Inflammation* **32**:12-19.
- Nakamura A, Niimi R and Yanagawa Y (2010) Protection from sepsis-induced acute renal failure by adenoviral-mediated gene transfer of beta2-adrenoceptor. *Nephrol Dial Transplant* **25**:730-737.
- Nakamura M, Shirai A, Yamazaki O, Satoh N, Suzuki M, Horita S, Yamada H and Seki G (2014) Roles of renal proximal tubule transport in acid/base balance and blood pressure regulation. *Biomed Res Int* **2014**:504808.
- Neubauer B, Machura K, Schnermann J and Wagner C (2011) Renin expression in large renal vessels during fetal development depends on functional beta1/beta2-adrenergic receptors. *Am J Physiol Renal Physiol* **301**:F71-77.



JPET # 252833

- Petrinec D, Reilly JM, Sicard GA, Lowell JA, Howard TK, Martin DR, Brennan DC and Miller SB (1996) Insulin-like growth factor-I attenuates delayed graft function in a canine renal autotransplantation model. *Surgery* **120**:221-225; discussion 225-226.
- Puigserver P, Wu Z, Park CW, Graves R, Wright M and Spiegelman BM (1998) A cold-inducible coactivator of nuclear receptors linked to adaptive thermogenesis. *Cell* **92**:829-839.
- Ralto KM and Parikh SM (2016) Mitochondria in Acute Kidney Injury. *Semin Nephrol* **36**:8-16.
- Sekine M, Monkawa T, Morizane R, Matsuoka K, Taya C, Akita Y, Joh K, Itoh H, Hayashi M, Kikkawa Y, Kohno K, Suzuki A and Yonekawa H (2012) Selective depletion of mouse kidney proximal straight tubule cells causes acute kidney injury. *Transgenic Res* **21**:51-62.
- Soriano FX, Liesa M, Bach D, Chan DC, Palacin M and Zorzano A (2006) Evidence for a Mitochondrial Regulatory Pathway Defined by Peroxisome Proliferator-Activated Receptor-Gamma Coactivator-1 Alpha, Estrogen-Related Receptor-Alpha, and Mitofusin 2. *Diabetes* **55**:1783-1791.
- Starremans PG, Li X, Finnerty PE, Guo L, Takakura A, Neilson EG and Zhou J (2008) A mouse model for polycystic kidney disease through a somatic in-frame deletion in the 5' end of Pkd1. *Kidney Int* **73**:1394-1405.
- Susantitaphong P, Cruz DN, Cerda J, Abulfaraj M, Alqahtani F, Koulouridis I, Jaber BL and Acute Kidney Injury Advisory Group of the American Society of N (2013) World incidence of AKI: a meta-analysis. *Clin J Am Soc Nephrol* **8**:1482-1493.
- Takaori K, Nakamura J, Yamamoto S, Nakata H, Sato Y, Takase M, Nameta M, Yamamoto T, Economides AN, Kohno K, Haga H, Sharma K and Yanagita M (2016) Severity and Frequency of Proximal Tubule Injury Determines Renal Prognosis. *J Am Soc Nephrol* **27**:2393-2406.
- Tang WX, Wu WH, Qiu HY, Bo H and Huang SM (2013) Amelioration of rhabdomyolysis-induced renal mitochondrial injury and apoptosis through suppression of Drp-1 translocation. *J Nephrol* **26**:1073-1082.

JPET # 252833

Tiwari S, Singh RS, Li L, Tsukerman S, Godbole M, Pandey G and Ecelbarger CM (2013) Deletion of the insulin receptor in the proximal tubule promotes hyperglycemia. *J Am Soc Nephrol* **24**:1209-1214.

Tran M, Tam D, Bardia A, Bhasin M, Rowe GC, Kher A, Zsengeller ZK, Akhavan-Sharif MR, Khankin EV, Saintgeniez M, David S, Burstein D, Karumanchi SA, Stillman IE, Arany Z and Parikh SM (2011) PGC-1alpha promotes recovery after acute kidney injury during systemic inflammation in mice. *J Clin Invest* **121**:4003-4014.

Tran MT, Zsengeller ZK, Berg AH, Khankin EV, Bhasin MK, Kim W, Clish CB, Stillman IE, Karumanchi SA, Rhee EP and Parikh SM (2016) PGC1alpha drives NAD biosynthesis linking oxidative metabolism to renal protection. *Nature* **531**:528-532.

Tsushida K, Tanabe K, Masuda K, Tanimura S, Miyake H, Arata Y, Sugiyama H and Wada J (2018) Estrogen-related receptor alpha is essential for maintaining mitochondrial integrity in cisplatin-induced acute kidney injury. *Biochem Biophys Res Commun* **498**:918-924.

Wills LP, Trager RE, Beeson GC, Lindsey CC, Peterson YK, Beeson CC and Schnellmann RG (2012) The Beta2-Adrenoceptor Agonist Formoterol Stimulates Mitochondrial Biogenesis. *J Pharmacol Exp Ther* **342**:106-118.

Zhou T, Luo M, Cai W, Zhou S, Feng D, Xu C and Wang H (2018) Runt-Related Transcription Factor 1 (RUNX1) Promotes TGF-beta-Induced Renal Tubular Epithelial-to-Mesenchymal Transition (EMT) and Renal Fibrosis through the PI3K Subunit p110delta. *EBioMedicine* **31**:217-225.

#### Footnotes.

R.B.C. is funded by [F30 DK104550] and [T32 GM008716] (National Institutes of Health). W.S.G. is funded by [T32 DK083262]. T.V.D. is funded by [T32 HL007249]. C.C.B. is funded by [P20 GM103542] (National Institutes of Health). R.G.S. is funded by [R01 GM084147] and 1BX000851 (Department of Veterans Affairs).

Portions of this work were presented at Experimental Biology 2018.

Person to Receive Reprint Requests:

JPET # 252833

Dr. Rick G. Schnellmann

1295 N. Martin

Drachman B307B

Tucson, AZ 85721

schnell@pharmacy.arizona.edu

JPET # 252833

### Figure Legends.

**Figure 1.**  $\gamma$ GT-Cre:ADRB2<sup>Flox/Flox</sup> mice have proximal tubule specific deletion of the  $\beta_2$  adrenergic receptor. A. DNA electrophoresis of: an ADRB2<sup>+/+</sup> mouse homozygous for ADRB2<sup>+</sup> (lane 1) and not expressing gGT-Cre (lane 2); a mouse  $\gamma$ GT-Cre:ADRB2<sup>+/+</sup> homozygous for ADRB2<sup>+</sup> (lane 3) and expressing gGT-Cre (lane 4); and a  $\gamma$ GT-Cre:ADRB2<sup>Flox/Flox</sup> mouse homozygous for ADRB2<sup>Flox</sup> (lane 5) and expressing gGT-Cre (lane 6). B. RT-PCR of ADRB2 mRNA in ADRB2<sup>Flox/Flox</sup> and  $\gamma$ GT-Cre:ADRB2<sup>Flox/Flox</sup> mice. C, D. PCR of ADRB2 (C) and  $\gamma$ GT-Cre (D) DNA. All samples are from renal cortex. Mean $\pm$ SEM. N=4-5, \* $-p < 0.05$ , Student's T-test.

**Figure 2.** Proximal tubule deletion of the  $\beta_2$  adrenergic receptor blocks the effects of formoterol on renal function following AKI. ADRB2<sup>Flox/Flox</sup> and  $\gamma$ GT-Cre:ADRB2<sup>Flox/Flox</sup> mice were subjected to sham or renal IRI surgery. Mice were treated with 0.3% DMSO (Vehicle) or 0.3 mg/kg formoterol (Formoterol) once daily beginning at 24 h and were euthanized at 144 h. A, B.) Serum creatinine at 24 h (A) and 144 h (B) following IR. C.) PAS stained kidney sections. D,E.) Semi-quantitative scoring of tubular necrosis (D). E.) Representative blot of renal cortical KIM-1 at 144 h following IRI. FFS-ADRB2<sup>Flox/Flox</sup> sham, FFV-ADRB2<sup>Flox/Flox</sup> IR+0.3% DMSO, FFF-ADRB2<sup>Flox/Flox</sup> IR+0.3 mg/kg formoterol, CFS- $\gamma$ GT-Cre:ADRB2<sup>Flox/Flox</sup> Sham, CFV-  $\gamma$ GT-Cre:ADRB2<sup>Flox/Flox</sup> IR+0.3% DMSO, CFF-  $\gamma$ GT-Cre:ADRB2<sup>Flox/Flox</sup> IR+Formoterol. Mean $\pm$ SEM. N=4-9. Different letters denote  $p < 0.05$ , Two-Way ANOVA with Fisher's LSD test.

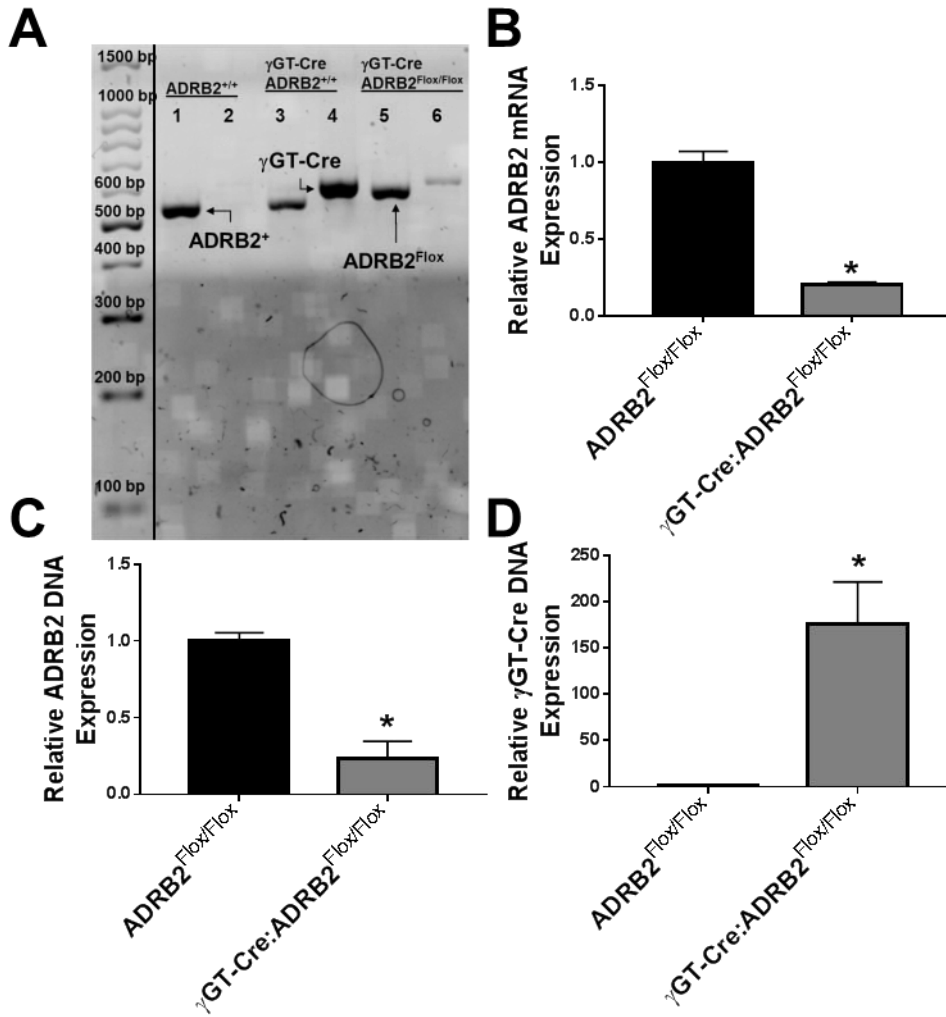
**Figure 3.** Proximal tubule cell  $\beta_2$  adrenergic receptor mediates formoterol-induced rescue of mitochondrial homeostasis following IRI-AKI. A.) Mitochondrial DNA copy number. B.) Representative blots and quantification of nuclear-encoded (NDUFS1) and mitochondrial-encoded (COX1) proteins in renal cortex 144 h after IRI. C.) Representative blots and quantification of mitochondrial dynamic proteins Mfn2 and Drp1 in renal cortex 144 h after IRI. FFS-ADRB2<sup>Flox/Flox</sup> sham, FFV-ADRB2<sup>Flox/Flox</sup> IR+0.3% DMSO, FFF-ADRB2<sup>Flox/Flox</sup> IR+0.3 mg/kg formoterol, CFS- $\gamma$ GT-Cre:ADRB2<sup>Flox/Flox</sup> sham,

JPET # 252833

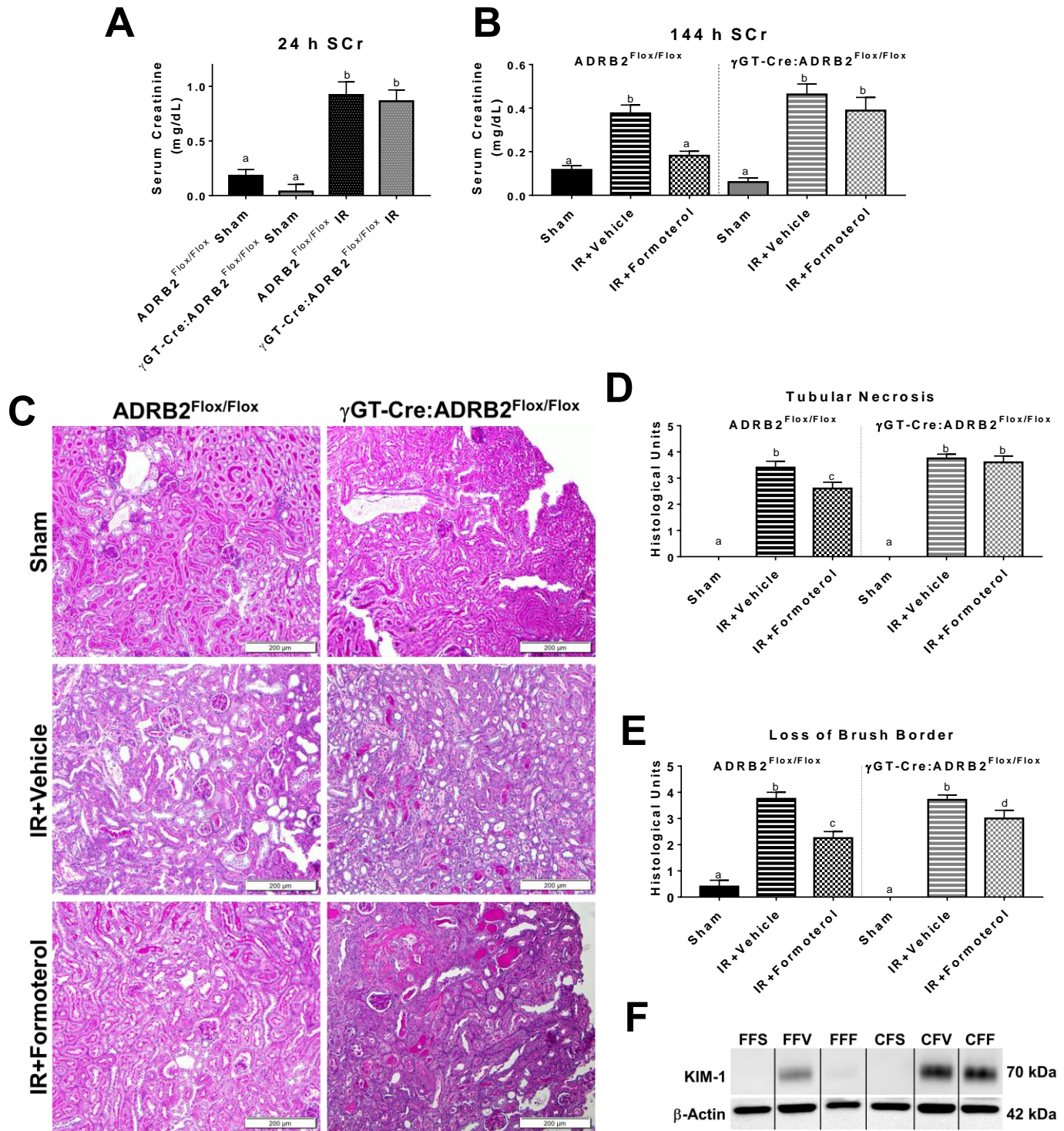
CFV-  $\gamma$ GT-Cre:ADRB2<sup>Flox/Flox</sup> IR+0.3% DMSO, CFF-  $\gamma$ GT-Cre:ADRB2<sup>Flox/Flox</sup> IR+0.3 mg/kg Formoterol.  
Mean $\pm$ SEM. N=4-9. Different letters denote p<0.05, Two-Way ANOVA with Fisher's LSD test.

**Figure 4.** The role of proximal tubule-cell b<sub>2</sub> adrenergic receptor on mitochondrial content and morphology in renal cortex. A.) Representative electron micrographs of ADRB2<sup>Flox/Flox</sup> and  $\gamma$ GT-Cre:ADRB2<sup>Flox/Flox</sup> subjected to sham or IRI surgery followed by treatment with 0.3% DMSO or 0.3 mg/kg formoterol daily for 144 h. B.) Quantification of individual mitochondrial area. C.) Quantification of average mitochondrial form factor. D.) Quantification of mitochondria per field. E.) Quantification of total mitochondrial area per field. All images were acquired at x8,200 magnification with at least 5 fields per animal. N=3-8. Mean $\pm$ SEM. Different letters indicate p<0.05, Two-Way ANOVA with Fisher's LSD test.

Figure 1.

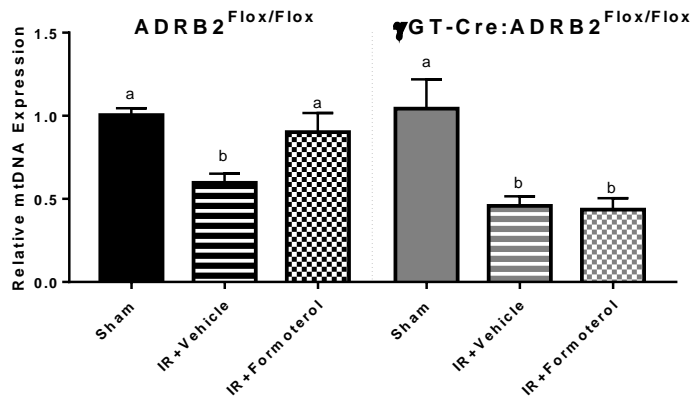


**Figure 2.**

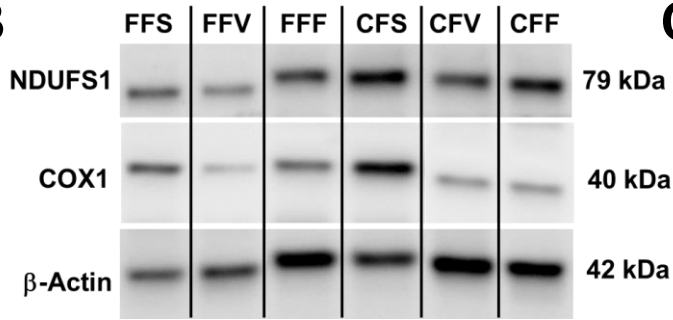


**Figure 3.**

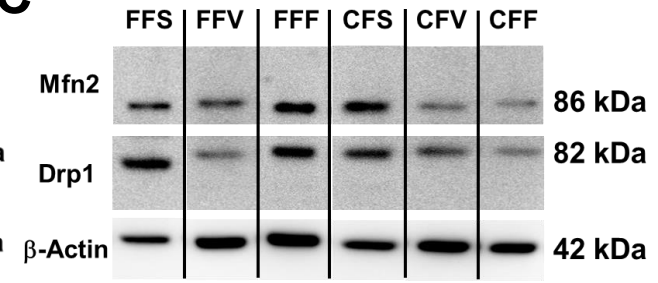
**A**



**B**



**C**





**Figure 4.**

