

JPET #239061

## Title Page

# **Pharmacologic Profile of Naloxegol, a Peripherally Acting $\mu$ -Opioid Receptor Antagonist, for the Treatment of Opioid-Induced Constipation**

Eike Floettmann,<sup>1</sup> Khanh Bui,<sup>2</sup> Mark Sostek,<sup>3</sup> Kemal Payza,<sup>4</sup> Michael Eldon<sup>5</sup>

EF: AstraZeneca UK Ltd, Cambridge, United Kingdom; KB: AstraZeneca Pharmaceuticals LP,  
Wilmington, Delaware; MS: AstraZeneca Pharmaceuticals LP, Gaithersburg, Maryland; KP:  
AstraZeneca Canada, Montreal, Quebec, Canada; ME: Nektar Therapeutics, San Francisco,  
California

Primary laboratory of origin: AstraZeneca Pharmaceuticals LP, Wilmington, Delaware

JPET #239061

## Running Title Page

**Running title:** Pharmacological Profile of the PAMORA Naloxegol

### Corresponding author:

Name: Khanh Bui, PhD

Address: AstraZeneca Pharmaceuticals LP, 35 Gatehouse Dr, Waltham, MA, USA 02451

Telephone: +1 (302) 333-1599

FAX: (610) 274-3549

Email: [Khanh.Bui@astrazeneca.com](mailto:Khanh.Bui@astrazeneca.com)

### Manuscript elements:

Number of text pages: 28

Number of tables: 5

Number of figures: 5

Number of references: 31

Number of words, Abstract: 243/250

Number of words, Introduction: 338/750

Number of words, Discussion: 1025/1500

### List of Nonstandard Abbreviations:

ANOVA      analysis of variance

BBB          blood–brain barrier

B<sub>max</sub>        maximum receptor density

JPET #239061

Caco2	human colon adenocarcinoma cell line
CHO	Chinese hamster ovary
CNS	central nervous system
c.p.m.	counts per minute
DAMGO	[D-Ala <sup>2</sup> , N-MePhe <sup>4</sup> , Gly-ol]-enkephalin
DADLE	D-Ala-D-Leu-enkephalin
DPDPE	[D-Pen <sup>2</sup> , D-Pen <sup>5</sup> ]-enkephalin
DTT	dithiothreitol
EC <sub>50</sub>	half maximal effective concentration
ENS	enteric nervous system
E <sub>max</sub>	maximum effect
GI	gastrointestinal
[ <sup>35</sup> S]GTPγS	guanosine 5- <i>O</i> -(3-[ <sup>35</sup> S]thio)triphosphate
HEK	human embryonic kidney
HPLC	high-pressure liquid chromatography
IC <sub>50</sub>	half maximal inhibitory concentration
i.v.	intravenous
K <sub>B</sub>	equilibrium dissociation constant for the inhibitor in a functional assay
K <sub>d</sub>	equilibrium dissociation constant of the radioligand
K <sub>i</sub>	equilibrium dissociation constant for the inhibitor
LC-MS/MS	liquid chromatography-tandem mass spectrometry
LSC	liquid scintillation counting
NS	not significant

JPET #239061

NST	no sample taken
OIC	opioid-induced constipation
PAMORA	peripherally acting $\mu$ -opioid receptor antagonist
P <sub>app</sub>	apparent permeability
PEG	polyethylene glycol
P-gp	P-glycoprotein
pK <sub>i</sub>	negative log of the equilibrium dissociation constant for the inhibitor
PNS	peripheral nervous system
p.o.	by mouth
QWBA	quantitative whole-body autoradiography
RT	room temperature
SPA	scintillation proximity assay
U69593	N-methyl-2-phenyl-N-(7-pyrrolidin-1-yl-1-oxaspiro[4.5]decan-8-yl)acetamide

### **Recommended Section Assignment:**

Gastrointestinal, Hepatic, Pulmonary, and  
Renal

## Abstract

Opioid-induced constipation (OIC) is a common side effect of opioid pharmacotherapy for the management of pain because opioid agonists bind to  $\mu$ -opioid receptors in the enteric nervous system (ENS). Naloxegol, a polyethylene glycol (PEG) derivative of naloxol, which is a derivative of naloxone and a peripherally acting  $\mu$ -opioid receptor antagonist, targets the physiologic mechanisms that cause OIC. Pharmacologic measures of opioid activity and pharmacokinetic measures of central nervous system (CNS) penetration were employed to characterize the mechanism of action of naloxegol. At the human  $\mu$ -opioid receptor in vitro, naloxegol was a potent inhibitor of binding ( $K_i=7.42$  nM) and a neutral competitive antagonist ( $pA_2=7.95$ ); agonist effects were  $<10\%$  up to  $30$   $\mu$ M and identical to those of naloxone. The doses achieving 50% of the maximal effect in the rat for antagonism of morphine-induced inhibition of gastrointestinal transit and morphine-induced antinociception in the hot plate assay were 23.1 and 55.4 mg/kg p.o. for naloxegol and 0.69 and 1.14 mg/kg p.o. for naloxone, respectively. In the human colon adenocarcinoma cell transport assay, naloxegol was a substrate for the P-glycoprotein transporter, with low apparent permeability in the apical to basolateral direction, and penetrated the CNS 15-fold slower than naloxone in a rat brain perfusion model. Naloxegol-derived radioactivity was poorly distributed throughout the rat CNS and was eliminated from most tissues within 24 hours. These findings corroborate phase 3 clinical studies demonstrating that naloxegol relieves OIC-associated symptoms in patients with chronic noncancer pain by antagonizing the  $\mu$ -opioid receptor in the ENS while preserving CNS-mediated analgesia.

## INTRODUCTION

Opioid-induced constipation (OIC), characterized by decreased frequency of bowel movements, straining, hard stools, and incomplete evacuation (Bell et al., 2009; Tuteja et al., 2010), is the most prevalent and bothersome side effect associated with opioid pharmacotherapy (Cook et al., 2008; Bell et al., 2009a). OIC results from the binding of opioid agonists to  $\mu$ -opioid receptors in the enteric nervous system (ENS) (Pappagallo, 2001).

Opioid binding in the ENS affects gastrointestinal (GI) function by altering several GI mechanisms: inhibition of gastric motility and propulsion of the small and large intestine, diminished secretions throughout the digestive system, increased anal sphincter tone, impairment of anal sphincter reflexes associated with rectal distension, and increased absorption of water from bowel contents (Pappagallo, 2001). Conventional therapies for the treatment of constipation (e.g., dietary changes, stool softeners, and laxatives) do not target all of the underlying mechanisms of OIC and have therefore been associated with limited efficacy in this context (Koopmans-Klein et al., 2016; LoCasale et al., 2016). OIC was found to negatively affect pain management, productivity and patients' quality of life (Bell et al., 2009b) and to increase healthcare utilization and costs (Fernandes et al., 2016). The risk of having an all-cause inpatient hospitalization, emergency department visit, and office or other outpatient visit was nearly twice higher in patients on chronic opioid treatment with OIC (Fernandes et al., 2016).

Naloxegol is a polyethylene glycol (PEG) derivative of naloxol, which is derived from naloxone that acts as a peripherally acting  $\mu$ -opioid receptor antagonist (PAMORA) and constitutes a new treatment for OIC (**Figure 1**) (Garnock-Jones, 2015). In 2014, the European Medicines Agency approved naloxegol (Moventig<sup>®</sup>) as treatment for OIC in adult patients who have had an inadequate response to laxatives (2014) and the US Food and Drug Administration

approved naloxegol (Movantik<sup>®</sup>) as treatment for OIC in adult patients with chronic noncancer pain (2015).

The effectiveness of naloxegol was established in two identical Phase III, multicenter, randomized, double-blind, placebo-controlled trials conducted in 1352 patients who had been taking a stable dose of an oral opioid for noncancer pain. Patients were randomized to once-daily treatment with naloxegol 12.5 or 25 mg or placebo. The primary end point was defined as the 12-week response rate ( $\geq 3$  spontaneous bowel movements per week and an increase from baseline of  $\geq 1$  spontaneous bowel movements for  $\geq 9$  of 12 weeks and for  $\geq 3$  of the final 4 weeks) in the intention-to-treat population. Significantly more patients responded to naloxegol 25 mg than to placebo in both trials and the response rate with the 12.5-mg dose was significantly higher than with placebo in only one trial (Chey et al., 2014).

This article describes the results of several studies that employed standard pharmacologic measures of opioid activity and pharmacokinetic measures of central nervous system (CNS) penetration, with an overall objective of characterizing the pharmacology and mechanism of action of naloxegol. Briefly, the objectives were to (1) establish the opioid receptor binding profile and functional activity of naloxegol in vitro, (2) determine the potency of naloxegol in vivo to antagonize the peripheral versus central effects of morphine, and (3) assess the ability of naloxegol to penetrate the blood–brain barrier (BBB) and distribute into various organs, including the brain and spinal cord.

## MATERIALS AND METHODS

### Animal Care and Use

In situ rat brain perfusion experiments were conducted at accredited animal care facilities using approved protocols in accordance with standards in place at the times the studies were conducted. In vivo opioid receptor antagonism experiments and quantitative whole-body autoradiography (QWBA) experiments were conducted in accordance with the relevant animal welfare laws in the United Kingdom.

### Peripheral Opioid Receptor Binding, Selectivity, and Functional Assays

**Materials.** AstraZeneca (Mölndal, Sweden) provided the test compounds. Naloxegol was supplied as a resin synthesized by Nektar Therapeutics (batch number C537/1; San Francisco, CA). Methylnaltrexone bromide solution (Relistor<sup>®</sup>, lot AGFH/13; Salix Pharmaceuticals, Bridgewater, NJ) was obtained from Mallinckrodt (Hazelwood, MO).

For the ligand binding studies, which were conducted at CEREP (Celle-Lévescault, France), the following materials were used: Tris and Tris-HCl (catalog number T1503; Sigma, France), MgCl<sub>2</sub> (catalog number M9272; Sigma), EDTA (catalog number ED2SS; Sigma), NaCl (catalog number S9888; Sigma), [<sup>3</sup>H]diprenorphine (catalog number NET1121; Perkin Elmer, Belgium), [<sup>3</sup>H]DADLE (catalog number NET648; Perkin Elmer), [<sup>3</sup>H]U69593 (catalog number NET952; Perkin Elmer), naltrexone (catalog number N3136; Sigma), and naloxone (catalog number N7758; Sigma).

For the guanosine 5-*O*-(3-[<sup>35</sup>S]thio)triphosphate (GTP $\gamma$ S) binding experiments conducted at Eurofins Panlabs (Taipei, Taiwan), the following materials were used: HEPES (Sigma-Aldrich, St. Louis, MO), NaCl (Merck-Millipore, Darmstadt, Germany), MgCl<sub>2</sub> (Sigma-Aldrich), dithiothreitol (DTT; Sigma-Aldrich), EDTA (Sigma-Aldrich), GDP (MP Biomedicals,

Santa Ana, CA), scintillation proximity assay (SPA) beads (WGA PVT beads, Perkin Elmer, Waltham, MA), [ $^{35}\text{S}$ ]GTP $\gamma$ S (Perkin Elmer), morphine (TFDA, Taipei, Taiwan), [D-Pen $^2$ , D-Pen $^5$ ]-enkephalin (DPDPE; Sigma-Aldrich), [D-Ala $^2$ , N-MePhe $^4$ , Gly-ol]-enkephalin (DAMGO, Sigma-Aldrich), and U69593 (Sigma-Aldrich).

**Ligand Binding at and Selectivity for  $\mu$ -,  $\delta$ -, and  $\kappa$ -Opioid Receptors.** The in vitro affinity of naloxegol for cloned opioid receptor subtypes was determined and compared with that of the reference agent, methylnaltrexone. Competitive inhibition studies were performed on cloned opioid receptors expressed in membranes of Chinese hamster ovary (CHO) cells and conducted in triplicate (n=3 independent experiments).

Radioligand binding assays were performed to evaluate the ability of these agents to inhibit specific radioligand binding to cloned opioid receptor subtypes. Half-maximal inhibitory concentration (IC $_{50}$ ), equilibrium dissociation constant for the inhibitor (K $_i$ ), and negative log of the equilibrium dissociation constant for the inhibitor (pK $_i$ ) values were obtained. The radioligands and conditions for the binding studies are shown in **Table 1**. The receptor binding methods used for  $\mu$ - (Zhang et al., 1998),  $\delta$ - (Simonin et al., 1994), and  $\kappa$ - (Meng et al., 1993) opioid receptors have been described previously, with the exception that 100 mM NaCl was added to the incubation buffer in the  $\mu$ -opioid receptor binding assay. All assays were conducted in 200- $\mu$ L volume. All assay incubations were terminated by filtration, and bound radioligand was quantitated by liquid scintillation spectrometry. The IC $_{50}$  values were determined by nonlinear regression analysis of the competition curves generated with the mean of duplicate values using Hill equation curve fitting. The inhibition constants (K $_i$ ) were calculated using the Cheng-Prusoff equation. The pK $_i$  results from 3 independent experiments were analyzed for significant differences by 1-way analysis of variance (ANOVA) followed by Bonferroni multiple

comparison test.

**Functional Activity Assays.** Naloxegol was first tested for any  $\mu$ -opioid agonist activity in [ $^{35}$ S]GTP $\gamma$ S filtration binding assays using membranes of human embryonic kidney (HEK)-293s cells stably expressing human  $\mu$ -opioid receptors (maximum receptor density [ $B_{\max}$ ] 0.29 pmol/mg protein). The experimental procedure was exactly as described previously (Payza, 2003). In brief, the assays were performed in 300  $\mu$ L in 96-well plates containing 10  $\mu$ g of the membranes, 50 mM HEPES, 20 mM NaOH, 100 mM NaCl, 1 mM EDTA, 5 mM MgCl<sub>2</sub>, 1 mM DTT, 15  $\mu$ M GDP, 0.4 nM [ $^{35}$ S]GTP $\gamma$ S, and 0.1% bovine serum albumin (pH 7.4). The plates were vortexed and incubated for 60 minutes at room temperature. After the incubation step, in order to remove the unbound [ $^{35}$ S]GTP $\gamma$ S, the plates were filtered, washed, and bound [ $^{35}$ S]GTP $\gamma$ S was quantitated by scintillation spectrometry exactly as described previously (Payza, 2003). In each experiment, naloxone was included as a reference neutral antagonist, and DAMGO (10  $\mu$ M) was used as a reference agonist to define the maximum effect ( $E_{\max}$ ) of the system.

Next, an assessment was carried out to determine whether naloxegol acts as a competitive  $\mu$ -opioid antagonist. We evaluated the ability of naloxegol to elicit rightward shifts in the concentration–response curve of morphine in [ $^{35}$ S]GTP $\gamma$ S binding experiments. Human recombinant  $\mu$ -opioid receptors were stably expressed in CHO-K1 cells ( $B_{\max}$  9.1 pmol/mg protein in membranes). In 96-well plates, incubation buffer (20 mM HEPES, pH 7.4, 100 mM NaCl, 10 mM MgCl<sub>2</sub>, 1 mM DTT, 1 mM EDTA), alone or containing various concentrations of morphine, was combined with the membranes (0.016 mg/mL), 3  $\mu$ M GDP, and SPA beads. After 1 minute at room temperature, 0.3 nM [ $^{35}$ S]GTP $\gamma$ S was added in buffer alone or in buffer containing designated concentrations of naloxegol or methylnaltrexone, which was included as a

reference antagonist in each experiment. DAMGO (10  $\mu$ M) was included as a reference agonist to define the  $E_{\max}$  of the system.

After incubation for 30 minutes at 30°C, bound [ $^{35}$ S]GTP $\gamma$ S was quantitated by scintillation spectrometry. Raw data (obtained in counts per minute [c.p.m.]) were used in the subsequent curve-fitting analyses. Naloxegol and methylnaltrexone were tested in parallel in 3 independent experiments. An unpaired *t* test was used to compare the  $pA_2$  values of the 2 compounds. In the first data analysis method, raw data were fit by nonlinear regression to the Gaddum/Schild equation using Prism (GraphPad Software; San Diego, CA), with Schild slope and Hill slope fixed to 1.0, where:

$$\begin{aligned} Y &= [^{35}\text{S}]\text{GTP}\gamma\text{S binding (cpm)} \\ X &= \text{concentration of morphine (Log [Molar])} \\ B &= \text{concentration of antagonist (Molar)} \\ EC_{50} &= \text{half maximal effective concentration (10}^{\text{Log } EC_{50}}) \\ \text{Shift} &= 1 + (B/(10^{[-1 \cdot pA_2]})^{\text{SchildSlope}} \\ \text{LogEC} &= \text{Log } (EC_{50} \cdot \text{Shift}) \\ Y &= \text{Bottom} + (\text{Top} - \text{Bottom}) / (1 + 10^{((\text{LogEC} - X) \cdot \text{HillSlope}))} \end{aligned}$$

In the second method, to illustrate linearity and overall fit to the competitive interaction hypothesis, the  $EC_{50}$  values of morphine at each concentration of naloxegol and methylnaltrexone were obtained by fitting the raw data to the variable slope equation:

$$Y = \text{Bottom} + (\text{Top} - \text{Bottom}) / (1 + 10^{((\text{LogEC}_{50} - X) \cdot \text{HillSlope}))}$$

These values were used to calculate dose ratios and to generate a Schild plot with simple linear regression of data to the equation:  $\text{Log (dose ratio} - 1) = pA_2 - n \cdot -\text{Log[Antagonist]}$ .

[<sup>35</sup>S]Guanosine 5-*O*-(3-[<sup>35</sup>S]thio)triphosphate binding experiments were also conducted with naloxegol (batch number 05-kspn588-14, Nektar Therapeutics, San Francisco, CA) in membranes of CHO cells expressing cloned human  $\delta$ -opioid receptors and in membranes of HEK-293 cells expressing cloned human  $\kappa$ -opioid receptors. The effects of naloxegol in agonist mode of the assays were expressed relative to the maximal effect induced by DPDPE (10  $\mu$ M) at  $\delta$ -opioid receptors and by U69593 (10  $\mu$ M) at  $\kappa$ -opioid receptors. In antagonist mode, naloxegol was tested for the ability to reverse agonism by DPDPE (300 nM) at  $\delta$ -opioid receptors and U69593 (100 nM) at  $\kappa$ -opioid receptors. These were single experiments conducted across a range of 12 half-log concentrations, from 0.3 to 100  $\mu$ M, with 1 replicate per concentration; experimental conditions were as described for [<sup>35</sup>S]GTP $\gamma$ S binding experiments with human recombinant  $\mu$ -opioid receptors. Functional activity at  $\kappa$ -opioid receptors was also determined in an isolated tissue preparation from the rabbit vas deferens, using methods detailed previously (Oka et al., 1981).

### **In Vivo Pharmacology of Naloxegol in Rat Models of Gastrointestinal Transit and Nociception**

**Materials.** Naloxegol (batch number LC-03N-114071) was synthesized by Nektar Therapeutics; stock solutions were stored at  $-20^{\circ}\text{C}$  and protected from light. Morphine hydrochloride was supplied as a white crystalline powder (batch number 28305; Macfarlan Smith, Edinburgh, UK), and naloxone hydrochloride was supplied as a white solid (batch number 4A/48945; Tocris, Bristol, UK); both were stored at room temperature and protected from light.

**Animals and Care.** Male Sprague Dawley rats (approximately 6–8 weeks old at dosing,

body weight approximately 150–260 g each) were supplied by Harlan UK Ltd (Bicester, Oxon, UK). All animals were acclimated to the experimental unit for at least 3 days before the study. Rats tested in the GI transit assay were housed in grid-bottomed plastic cages (up to 4 animals per cage) suspended over paper-lined trays during the acclimation and on-study periods. Rats tested in the hot plate nociception assay were housed in solid-bottomed plastic cages with sawdust bedding (up to 5 animals per cage) during the acclimation and on-study periods. Holding and study areas were on an automatic 12-hour light:dark cycle (light hours: 0700–1900 h). The temperature set point was  $20\pm 3^{\circ}\text{C}$ ; relative humidity was not controlled. Domestic mains tap water and a standard laboratory diet of known formulation (RM1[E] SQC; Special Diet Services, Witham, Essex, UK) were provided ad libitum.

**Gastrointestinal Transit Model: Experimental Design.** The GI transit model was employed to determine the ability of naloxegol to antagonize morphine-induced constipation by measuring the distance traveled by a charcoal meal within the GI tract. Rats were arbitrarily allocated to treatment groups of 7 to 8 rats, as follows: intravenous (i.v.) 0.9% saline and p.o. 0.9% saline, i.v. morphine 10 mg/kg and p.o. 0.9% saline, and i.v. morphine 10 mg/kg with p.o. naloxegol (10, 30, 90 mg/kg) or naloxone (0.3, 1, 3, 10, 30 mg/kg). Naloxegol, naloxone, and morphine were formulated separately for administration in 0.9% saline. Naloxegol doses were prepared for p.o. administration in a volume of 10 mL/kg. Morphine doses were prepared for i.v. administration in a volume of 5 mL/kg.

Animals were fasted overnight before GI transit testing. Morphine or 0.9% saline was administered by tail vein injection at  $t=0$  minutes, followed by the administration of the saline vehicle, naloxone or naloxegol, by oral gavage at  $t=5$  minutes. Twenty-five minutes after treatment administration, 1 mL of a charcoal suspension was administered to each animal by oral

gavage. Thirty minutes after charcoal ingestion, each rat was humanely euthanized by cervical dislocation and the intestine was exposed. The distance the charcoal had traveled along the intestine from the pyloric sphincter and the total intestinal length were measured. The distance the charcoal meal traveled in mm was calculated as a percentage of the total length of the intestine for each rat.

**Gastrointestinal Transit Model: Statistics and Data Analysis.** Statistical comparisons were made between treatment groups using nonparametric (e.g., Kruskal-Wallis statistic, Dunn test, Mann-Whitney *U* test) statistical procedures. The decision to employ nonparametric tests was based on whether the groups being compared satisfied the homogeneity of variance criterion evaluated by the Levene mean test or *F* test. Nonparametric tests were used throughout to maintain continuity of assessment. The threshold for statistical significance was defined as  $P < 0.05$ .

**Nociception Model: Experimental Design.** The hot plate model of nociception was used to determine whether peripheral antagonism could be achieved at a dose that did not reverse the CNS-mediated analgesia induced by morphine. The time that an animal was able to tolerate heat from a hot plate indicated the degree of analgesia in effect. Rats were arbitrarily assigned to treatment groups of 8 to 10 rats per group, as follows: i.v. 0.9% saline and p.o. 0.9% saline, i.v. morphine 5 mg/kg and p.o. 0.9% saline, and i.v. morphine 10 mg/kg with p.o. naloxegol (10, 30, 90 mg/kg) or naloxone (1, 3, 10, 30 mg/kg).

To assess the dose range in which naloxone affected the antinociceptive properties of morphine, a dose range-finding test was conducted before the start of the main study. Four groups of adult male rats ( $n=9$ ) were dosed with i.v. morphine (5 mg/kg) and p.o. naloxone (3 mg/kg,  $n=2$ ; 10 mg/kg,  $n=2$ ; and 30 mg/kg,  $n=3$ ) or p.o. 0.9% saline (10 mL/kg,  $n=2$ ). These

doses were used in the subsequent studies.

On each day of dosing, naloxegol, naloxone, and morphine were formulated separately for administration in 0.9% saline (batch numbers 02C11BE and 02J07G50; Baxter Healthcare Ltd., Compton, UK). All solutions were stored at room temperature and protected from light until use. Naloxegol and naloxone doses were prepared for oral administration in a volume of 10 mL/kg. Morphine doses were prepared for i.v. administration in a volume of 1 mL/kg.

Animals were fasted overnight before hot plate nociception testing. Animals were placed on a hot plate maintained at approximately 53°C. The withdrawal latency to heat exposure (withdrawal or shaking of hind feet, sharp withdrawal or licking of forefeet, or attempting to escape by jumping) was recorded after the animal was removed from the hot plate. The maximum length of hot plate exposure was set at 15 seconds. A predose control response was measured before dosing in order to establish baseline withdrawal latencies. Predose baseline latencies were ranked, and the animals were allocated to treatment groups so that the mean baseline latencies were similar among groups. Morphine or saline was administered by tail vein injection at t=0 minutes, followed by the administration of saline, naloxegol, or naloxone by oral gavage at t=5 minutes. Each animal was submitted to the hot plate test at approximately 30 and 60 minutes after i.v. treatment administration.

**Nociception Model: Statistics and Data Analysis.** Statistical comparisons were made between treatment groups using parametric (e.g., 1-way ANOVA, Dunnett *t* test, Student *t* test) or nonparametric (e.g., Kruskal-Wallis statistic, Dunn test, Mann-Whitney *U* test) statistical procedures. The decision to employ parametric or nonparametric tests was based on whether the groups being compared satisfied the homogeneity of variance criterion evaluated by the Levene mean test or *F* test.

Data from animals in treatment groups receiving i.v. morphine and p.o. naloxegol or naloxone were analyzed in comparison with animals receiving i.v. morphine and p.o. saline using the Levene mean test followed by an ANOVA and the Dunnett *t* test (naloxegol groups at predose and at 30 and 60 minutes postdose and naloxone groups at predose) or the Kruskal-Wallis and Dunn test (naloxone groups at 30 and 60 minutes postdose). Data from animals receiving i.v. morphine and p.o. saline were compared with data from animals receiving i.v. saline and p.o. saline using the *F* test followed by the Student *t* test (unpaired, 2-tailed). In all cases, the threshold for statistical significance was defined as  $P < 0.05$ .

**Dose-response Modeling for Gastrointestinal Transit and Nociception Assays.** In the GI transit assay, dose-response relationships were determined by calculation of the mean percentage of intestinal distance traveled for rats administered morphine and opioid antagonist as a fraction of the mean percentage of intestinal distance traveled for rats administered morphine and the saline vehicle. In the hot plate nociception assay, dose-response relationships were determined by calculation of the mean time spent on the hot plate for rats administered morphine and opioid antagonist as a fraction of the mean time on the hot plate for rats administered morphine and the saline vehicle. The doses achieving 50% of the maximal effect (ED<sub>50</sub>) generated for each opioid antagonist in the GI transit and hot plate assays were compared to determine whether peripheral antagonism could be achieved at a dose that did not reverse the CNS-mediated analgesia induced by morphine.

Data were fitted using the Origin (Version 7.5) Sigmoidal Fit tool, Dose-Response Fit. The logistical equation for fitting was  $(A_1 - A_2)/(1 + (x/x_0)^p) + A_2$ , where:

$$x_0 = \text{ED}_{50}$$

$$p = \text{power}$$

$A_1$  = initial Y value

$A_2$  = final Y value

The Y value at  $x_0$ , also known as  $ED_{50}$ , is halfway between the 2 limiting values  $A_1$  and  $A_2$ :  $y(x_0) = (A_1 + A_2)/2$

Analysis was also performed to demonstrate the separation between the  $ED_{50}$  values for naloxegol and naloxone.

### Human Colon Adenocarcinoma Cell Transport Assay

**Materials.** Naloxone hydrochloride dihydrate (catalog number N7758; Sigma-Aldrich) was prepared as a 10 mM solution in dimethyl sulfoxide. Naloxegol (lot number RP01778-74-2) and elacridar were synthesized by Nektar Therapeutics; each reagent was prepared separately as a 10-mM solution in dimethyl sulfoxide. Cyclosporin A and verapamil were reagents provided by Absorption Systems, LC (Exton, PA), which conducted the study.

**Experimental Design.** This assay measured the ability of naloxegol (and the centrally penetrant reference agent, naloxone) to permeate a bilayer of human colon adenocarcinoma (Caco2) cells in order to characterize its permeability and efflux properties. Caco2 monolayers were grown to confluence on collagen-coated, microporous, polycarbonate membranes in 12-well Costar Transwell® plates (Corning Inc., Corning, NY). At the time the assays were conducted, the plates had been incubated for 21 to 28 days and cells were from passages 61 to 68. The permeability assay buffer for the donor chambers was Hanks' balanced salt solution (pH 7.4, with 10 mM HEPES and 15 mM glucose). The buffer in the receiver chamber also contained 1% bovine serum albumin. The apparent permeabilities of naloxegol and naloxone were evaluated at fixed assay buffer concentrations of 10  $\mu$ M when studied alone and with verapamil, and at 5  $\mu$ M when studied with cyclosporin A.

For inhibition experiments, all chambers were first preincubated for 30 minutes with assay buffer to presaturate any p-glycoprotein (P-gp) binding sites. After the preincubation period, the buffer was removed and replaced with fresh solution containing assay buffer and naloxegol or naloxone in the presence or absence of efflux transporter inhibitors (cyclosporin A, 10  $\mu$ M; verapamil, 100  $\mu$ M; or elacridar, 0.5  $\mu$ M). Cell monolayers were exposed to assay buffer on the apical side (A to B) or the basolateral side (B to A) and incubated at 37°C with 5% CO<sub>2</sub> in a humidified incubator. Samples taken from the donor and receiver chambers at 2 hours were used to determine apparent permeability ( $P_{app}$ ). Each determination was performed in duplicate. After the individual monolayers were subjected to the test compounds, Lucifer Yellow flux was measured postexperiment to confirm the integrity of the monolayers.

**Analysis of Membrane Permeability.** Concentrations of test molecules were measured using liquid chromatography-tandem mass spectrometry (LC-MS/MS). Samples (10  $\mu$ L) were injected directly into a Hypersil™ BDS C18 high-pressure liquid chromatography (HPLC) column (30  $\times$  2.1 mm inner diameter, 3- $\mu$ m particle size, with guard column; Thermo Fisher Scientific, Grand Island, NY) and a tandem mass spectrometer (PE SCIEX API2000 or API3000; AB SCIEX LLC, Framingham, MA). The mobile phase was 25 mM ammonium formate buffer, pH 3.5. Compounds were eluted with a linear gradient at a flow rate of 300  $\mu$ L/min. Eluted compounds were ionized using an electrospray interface.

Apparent permeability was measured in both absorptive (apical to basolateral; A to B) and secretory (basolateral to apical; B to A) directions. The efflux ratio for each molecule was calculated as  $P_{app}$  B to A/ $P_{app}$  A to B. The  $P_{app}$  and percent recovery were calculated as  $P_{app} = (dC_r/dt) \times V_r / (A \times C_A)$  and Percent Recovery =  $100 \times ((V_r \times C_r^{final}) + (V_d \times C_d^{final})) / (V_d \times C_N)$ , respectively, where:

$dC_r/dt$  is the slope of the cumulative concentration in the receiver compartment versus time in  $\mu\text{M s}^{-1}$ .

$V_r$  is the volume of the receiver compartment in  $\text{cm}^3$ .

$V_d$  is the volume of the donor compartment in  $\text{cm}^3$ .

$A$  is the area of the cell monolayer ( $1.13 \text{ cm}^2$  for 12-well Transwell®).

$C_A$  is the average of the nominal dosing concentration and the measured concentration in the donor chamber at 2 hours in  $\mu\text{M}$ .

$C_N$  is the nominal concentration of the dosing solution in  $\mu\text{M}$ .

$C_r^{\text{final}}$  is the cumulative receiver concentration in  $\mu\text{M}$  at the end of the incubation period.

$C_d^{\text{final}}$  is the concentration of the donor in  $\mu\text{M}$  at the end of the incubation period.

## In Situ Rat Brain Perfusion Model

**Materials and Equipment.** Naloxone hydrochloride dihydrate (reference compound; lot number 111K1379) was obtained from Sigma-Aldrich. Atenolol and antipyrine (phenazone) were reagents provided by Absorption Systems, who conducted the study. Naloxegol (lot number LC-03N-92117) was synthesized by Nektar Therapeutics.

**Animals and Care.** Adult male Sprague Dawley rats (approximately 11–12 weeks old and body weight approximately 300–400 g at arrival) were supplied by Hilltop Lab Animals, Inc. (Scottsdale, PA). All animals were randomly assigned to treatment groups upon arrival and were acclimated to the experimental unit for at least 1 day before the study. Each animal was in the

weight range of 308 to 410 g on the day of dosing.

Rats were housed in wire cages (2 animals per cage) during the acclimation and on-study periods. Before study initiation, water and a standard laboratory diet were provided for all animals ad libitum. Animals were not fasted before study initiation.

**Experimental Design.** The rat in situ brain perfusion assay established the rate of permeation of naloxegol in comparison with that of naloxone.

*Animal disposition.* Rats (n=3/compound) were perfused with naloxone or naloxegol; data from 20 rats perfused solely with atenolol and antipyrine (part of an investigation of a large series of compounds) were used for control comparisons. All animals were euthanized by CO<sub>2</sub> narcosis at the conclusion of the study or during the study if necessary.

*Perfusion solution (perfusate) preparation.* Each test perfusate contained a test compound (target concentration, 20  $\mu$ M), atenolol (target concentration, 50  $\mu$ M), and antipyrine (target concentration, 5  $\mu$ M) dissolved in Krebs-Ringer solution (buffered with sodium bicarbonate, pH 7.4). Control perfusate lacked the test compound. To ensure the integrity of the perfusion preparation during the evaluation of test compounds, atenolol and antipyrine were included as permeation standards representing low and high BBB permeability, respectively.

Atenolol served as a low-permeability control; only values <10 pmol/g brain/s (perfused at 50  $\mu$ M) were considered acceptable. Because antipyrine is a lipophilic compound that easily crosses the BBB, deviation in the antipyrine value in a given perfusion preparation may suggest a failure in the surgical preparation of the brain. Uptake rates for the permeation standards atenolol and antipyrine were also determined in the absence of test compound.

*Brain perfusion technique.* Perfusion was performed using the single time point method. Perfusate was infused into rats via the left external carotid artery at 20 mL/min using an infusion

pump. This flow rate was selected to completely replace blood flow to the brain while maintaining normal physiologic pressure (80–120 mm Hg). The perfusion duration was 30 seconds, followed immediately by perfusion for an additional 30 seconds with drug-free perfusate to remove any residual drug from the vasculature.

*Sample preparation.* After perfusion, each rat was euthanized, the brain immediately removed from the skull, and the left cerebral hemisphere weighed. Each rat brain was added to 4 mL 20% methanol and homogenized using a Polytron homogenizer (ThermoFisher Scientific). The total volume of homogenate was measured and recorded.

Each sample was prepared and analyzed in triplicate: 3 aliquots were taken from each brain homogenate sample and treated independently to determine the drug concentration. For each aliquot, 200  $\mu$ L homogenate was diluted with 400  $\mu$ L acetonitrile containing internal standard and centrifuged for 10 minutes at 12,000 rpm. The supernatant (530  $\mu$ L) was placed into a clean centrifuge tube, and the samples were dried at 37°C under a stream of nitrogen. Dried samples were reconstituted with 125  $\mu$ L of 10% acetonitrile/90% water and again centrifuged for 10 minutes at 12,000 rpm. After centrifugation, 120  $\mu$ L of supernatant was placed into an HPLC vial pending analysis, as described below.

*Quantification and analysis of drug concentrations (LC-MS/MS).* Reconstituted supernatants (10  $\mu$ L) were injected into a Capcell Pak C8 HPLC column (50  $\times$  2.1 mm inner diameter; Phenomenex Inc., Torrance, CA) at 45°C or a Hypersil™ BDS C18 column (30  $\times$  2.1 mm inner diameter, 3- $\mu$ m particle size; Thermo Fisher Scientific), each coupled to a tandem mass spectrometer (API4000; AB SCIEX LLC). The mobile phase was 25 mM ammonium formate buffer, pH 3.5. Compounds were eluted with a linear gradient at a flow rate of 250  $\mu$ L/min (Capcell Pak C8 column) or 300  $\mu$ L/min (Hypersil BDS C18 column). Eluted

compounds were ionized using an electrospray interface.

Drug concentrations in brain homogenate were quantified against calibration curves generated by spiking the drugs into drug-free brain homogenate. Average values for the triplicate measurements were calculated and considered as n=1. Summary statistics were calculated using Microsoft Office Excel, 2003 (Microsoft, Redmond, WA).

### **Quantitative Whole-Body Autoradiography**

Quantitative whole-body autoradiography was conducted to track the overall distribution of a single oral dose of radiolabeled naloxegol in adult male and pregnant female rats.

**Materials and Equipment.** Naloxegol (batch number 1005, AstraZeneca, Wilmington, DE) was stored at 2° to 8°C and protected from light. <sup>14</sup>C-radiolabeled naloxegol (1.0 mCi/mL; specific activity 49.5 mCi/mmol [2.80 MBq/mg]; Isotope Chemistry, AstraZeneca) was stored at –20°C in the dark. Aquasafe 500 Plus liquid scintillation fluid was obtained from Zinsser Analytic (Maidenhead, UK). Sterile water was obtained from Hameln Pharmaceuticals (Gloucester, UK). A Fuji FLA 5000 Image Analyser (pixel size 50 µm<sup>2</sup>) was used (Fuji Photo Film; Tokyo, Japan).

**Animals and Care.** Seven male Lister hooded rats (8–9 weeks old at dosing, body weight 255–290 g each) and 5 time-mated female Sprague Dawley rats (body weight 347–392 g each) were supplied by Charles River UK Limited (Margate, Kent, UK). All animals were acclimated to the experimental unit before the study (males, 6 days; females, 13 days).

Male rats were group housed in solid-floored polycarbonate and stainless steel caging during the prestudy period. During the study period, they were multiply housed, where possible, in polycarbonate and stainless steel cages with raised wire mesh floors. Time-mated female rats

were held in solid-bottomed cages with bedding and nesting material during the acclimation and on-study periods.

Animals were provided domestic mains tap water and a standard laboratory diet of known formulation (SDS Rat and Mouse Maintenance Diet No. 1 for male rats and No. 3 for time-mated female rats; Special Diet Services, Witham, Essex, UK) ad libitum. Holding and study areas were on an automatic 12-hour light:dark cycle (light hours: 0700–1900 h). Temperature and humidity measured during the study ranged from 19°C to 22°C and from 43% to 58%, respectively. All rats were offered environmental enrichment during the acclimation period.

**Dose Formulation, Specific Activity, and Dose Assessment.** The dose formulation was prepared on the morning of administration. Naloxegol (288.0 mg) was weighed into an amber glass container. Sterile water (21 mL) was added and the formulation was stirred for 3 minutes. [ $^{14}\text{C}$ ]naloxegol (0.81 mL) was added and the formulation was stirred for 4 minutes. After adding 8.19 mL sterile water (final volume, 30 mL; target concentration, 10 mg/mL), the formulation was stirred for 3 minutes. Care was taken to ensure that solutes were completely dissolved at each step to form a homogenous solution.

Before use, the homogeneity and radioactive concentration of [ $^{14}\text{C}$ ]naloxegol were confirmed by liquid scintillation counting (LSC) analysis ( $6 \times 10 \mu\text{L}$  aliquots). Duplicate weighed amounts of the dose formulation (calculated from differences in syringe weights before and after dispensing) were dispensed into volumetric flasks ( $\times 6$ ) and made up to volume with water.

The amount of [ $^{14}\text{C}$ ]naloxegol in the dose formulation was determined by calculating the mean radioactive content from LSC analysis. The concentration of the dose formulation was

subsequently calculated from the determined amounts of radiolabeled and nonradiolabeled naloxegol dispensed and the final weight of the dose formulation.

**Dose Administration and Determination.** Animals were fasted overnight before dose administration. Radiolabeled naloxegol was administered by oral gavage (target dose volume, 5 mL/kg) to achieve a target dose level of 50 mg/kg (5.55 MBq/kg). The dose received by each animal was determined with reference to the radioactive concentration, the weight of the dose administered, and the specific activity of [ $^{14}\text{C}$ ]naloxegol in the dose formulation. Male rats were administered a mean ( $\pm$  SD) of 5.62 ( $\pm$ 0.06) MBq/kg; female rats received a mean of 5.60 ( $\pm$ 0.03) MBq/kg.

**Sample Preparation and Storage.** One male rat was humanely euthanized by CO<sub>2</sub> narcosis at 0.5, 1, 4, 24, 48, 168, and 504 hours postdose, respectively. One time-mated female rat was humanely euthanized at 0.5, 1, 4, 24, and 48 hours postdose, respectively.

After removal of the whiskers, legs, and tails, the carcasses were frozen by immersion in a mixture of solid CO<sub>2</sub> in hexane for approximately 30 minutes and then embedded in a block of carboxymethylcellulose, which was frozen in the same way. After equilibration at approximately  $-20^{\circ}\text{C}$ , sagittal sections (30  $\mu\text{m}$  thick) were taken using a whole-body cryomicrotome (Leica Biosystems GmbH, Nussloch, Germany). The sections were freeze dried in a chamber of the cryomicrotome before storage at ambient temperature. Carcasses were stored frozen ( $-20^{\circ}\text{C}$ ) until analysis. After analysis, samples were returned to storage at  $-20^{\circ}\text{C}$ . Freeze-dried whole body sections were stored at room temperature.

**Analysis of Total Radioactivity.** The radioactivity present in various organs and tissues in whole-body sections was determined by QWBA. After exposure, the imaging plates were scanned using a phosphorimage analyzer. Tissues and organs of interest were quantified using

AIDA image analysis software (version 4.06; Raytest Isotopenmeßgeräte GmbH, Straubenhardt, Germany). For analysis, representative whole-body sections were placed into close contact with phosphor screens and left for a 7-day period. A set of external standards were also exposed on each phosphor screen. These standards were prepared from blood spiked with a serial dilution of a  $^{14}\text{C}$ -labeled reference solution, which was dispensed into holes drilled into a block of carboxymethylcellulose, frozen, and then sectioned in the same way as the animal samples.

After the phosphor screen was scanned, an image of the radioactivity in the sample was stored digitally. For quantitative analysis, 6 background areas were defined on each stored phosphor screen image. The software automatically calculated the mean background and subsequently subtracted this from all standards and tissues analyzed. A regression coefficient was derived by comparing the response of each standard with the nominal disintegrations per minute per gram over the range of radioactive concentration used and forcing the response curve through the origin. The concentrations of the standards used were in the range of 0.09 to 826.31  $\mu\text{g Eq/g}$ . The response curve was linear over these concentrations and was assumed to be linear to the limit of reliable determination.

Organs or tissues from representative autoradiograms were identified and integrated. The back-calculated tissue concentrations ( $\mu\text{g Eq/g}$ ) were then determined by the software. The limit of reliable measurement for each storage screen was calculated from the assessment of the mean background of the plate and taken to be 3 times the S.D. of the mean above background. At the specific activity used in this study, the limit of reliable measurement was in the range of 0.06 to 0.16  $\mu\text{g Eq/g}$ .

## RESULTS

### Binding, Selectivity, and Functional Profile of Naloxegol In Vitro

In vitro competitive binding assays were conducted 3 times on 3 different days. Each experiment tested a range of concentrations of naloxegol and methylnaltrexone, with each concentration in triplicate. The results showed that naloxegol inhibited binding to all 3 opioid receptor subtypes. Mean  $\pm$  S.E.M.  $pK_i$  values are summarized in **Table 2**. The  $K_i$  values of naloxegol at the cloned human  $\mu$ -opioid receptor ranged from 6.5 to 8.5 nM. The  $pK_i$  values of naloxegol and methylnaltrexone corresponded to respective geometric mean  $K_i$  values of 7.42 nM and 22.1 nM, showing that naloxegol bound human  $\mu$ -opioid receptors with 3-fold greater affinity than methylnaltrexone ( $P < 0.05$ ). At cloned human  $\delta$ -opioid receptors, the  $pK_i$  values of naloxegol and methylnaltrexone corresponded to respective geometric mean  $K_i$  values of 203 nM and 1.9  $\mu$ M (indicating that naloxegol bound such receptors with 9.4-fold greater affinity than methylnaltrexone,  $P < 0.001$ ). At cloned rat  $\kappa$ -opioid receptors, the  $pK_i$  values of naloxegol and methylnaltrexone corresponded to respective geometric mean  $K_i$  values of 8.65 nM and 10.9 nM ( $P > 0.05$ ). Apart from inhibition at opioid receptors, naloxegol did not significantly inhibit binding by  $>30\%$  when screened across a panel of more than 300 receptors, ion channels, transporters, and enzymes at a final concentration of 10  $\mu$ M (data not shown).

Naloxegol was a potent and competitive neutral antagonist of morphine at the human  $\mu$ -opioid receptor. In [ $^{35}$ S]GTP $\gamma$ S filtration binding assays using membranes of HEK-293 cells stably expressing human  $\mu$ -opioid receptors, naloxegol (30  $\mu$ M) and naloxone (30  $\mu$ M) elicited  $5.1 \pm 2.2\%$  and  $6.3 \pm 1.8\%$  agonism, respectively, relative to DAMGO (mean  $\pm$  SD of 8 values from 4 independent experiments). In Schild-type experiments ( $n = 3$  independent experiments conducted in triplicate), naloxegol (**Figure 2A**) and methylnaltrexone (**Figure 2B**) each elicited

parallel rightward shifts in the morphine dose-response curve without any accompanying reduction in  $E_{\max}$ , the maximal response produced by morphine. The results for both compounds fitted closely to the competitive antagonism model ( $R^2=0.997-0.998$ ), with Schild slopes of  $-1.03$  for naloxegol and  $-0.982$  for methylnaltrexone (**Figure 3**).

Parallel testing of naloxegol and methylnaltrexone in 3 independent experiments yielded  $pA_2$  values of  $7.95 \pm 0.11$  and  $7.43 \pm 0.02$ , respectively. These values correspond to respective  $K_B$  values of 11 and 37 nM. Thus, consistent with the receptor binding data, naloxegol was 3.4-fold more potent than methylnaltrexone as an antagonist at human  $\mu$ -opioid receptors ( $P=0.0012$ ,  $pA_2$  comparison, unpaired  $t$  test). Plate control wells in the Schild-type experiments also contained naloxegol and methylnaltrexone in the absence of morphine. At the highest concentrations tested, naloxegol (5  $\mu$ M) had  $<10\%$  agonism ( $7.8 \pm 1.3\%$ ), and methylnaltrexone (14  $\mu$ M) had  $14.4 \pm 1.3\%$  partial agonism relative to DAMGO (mean  $\pm$  SD of 8 values from 2 independent experiments).

At the human  $\delta$ -opioid receptor, naloxegol showed no agonism and weak antagonism, with an  $IC_{50}$  value of 866 nM in the [ $^{35}$ S]GTP $\gamma$ S functional assay. In the human  $\kappa$ -opioid receptor [ $^{35}$ S]GTP $\gamma$ S functional assay, naloxegol exhibited partial agonism. Naloxegol alone produced a concentration-dependent increase in binding, with an  $EC_{50}$  value of 47 nM and a maximal effect of 39% agonism relative to the reference  $\kappa$ -opioid agonist U69593. Data are from 1 experiment conducted in singlicate. Naloxegol also inhibited the response to U69593, with an  $IC_{50}$  value of 37 nM and maximal inhibition of 62% at 100  $\mu$ M. Functional studies in the rabbit vas deferens assay, however, indicated that naloxegol elicited no agonist activity at  $\kappa$ -opioid receptors at concentrations up to 10  $\mu$ M.

## **Effects of Naloxegol on the Peripheral Nervous System- and Central Nervous System-Mediated Effects of Morphine In Vivo**

Oral naloxone at doses  $\geq 10$  mg/kg and oral naloxegol at 90 mg/kg completely reversed the effect of morphine in the GI transit assay. Based on comparison of ED<sub>50</sub> values (the dose achieving 50% of the maximal effect) derived from the dose-response modeling, naloxegol was approximately 33 times less potent than naloxone at antagonizing morphine in the GI tract (ED<sub>50</sub> values of 23.1 mg/kg and 0.69 mg/kg, respectively).

Oral naloxone at doses  $\geq 10$  mg/kg completely reversed the analgesic effect of morphine in the hot plate assay, with an ED<sub>50</sub> of 1.14 mg/kg. The corresponding ED<sub>50</sub> of naloxegol was 55.4 mg/kg, indicating that naloxegol was approximately 49-fold less potent than naloxone at antagonizing morphine analgesia.

The 2-fold separation in the peripheral nervous system (PNS) versus CNS effect observed in the rat was lower than that observed in humans (Eldon et al., 2015). However, this lower separation is most likely related to the greater extent of metabolism in the rat (Data on File, 2013), resulting in greater exposure to potentially active metabolites with greater ability to penetrate the BBB than would be expected in humans.

## **PEGylation Reduces the Passive Membrane Permeability of Naloxegol In Vitro and Makes Naloxegol Susceptible to Active Efflux**

The respective permeabilities and efflux ratios of 10  $\mu$ M naloxegol in the presence of several P-gp inhibitors are summarized in **Table 3**. The apparent permeabilities of 10  $\mu$ M naloxone in the A to B and B to A directions were unaltered in the presence of cyclosporin A, elacridar, and verapamil. These data indicate that at a concentration of 10  $\mu$ M, naloxone transport across Caco2 monolayers is primarily passive. In contrast, the efflux ratio of naloxegol was

reduced from 15 to 1, 1.3, and 1.1 in the presence of cyclosporin A, verapamil, and elacridar, respectively. These results suggest that naloxegol is a substrate for at least 1 apically directed efflux transporter, likely the P-gp transporter. Naloxegol also displayed low apparent permeability in both the A to B and B to A directions compared with naloxone, suggesting that the addition of the PEG chain to naloxegol reduces its passive permeability.

The P-gp inhibitors employed in the in vitro Caco2 permeability assays inhibit multiple transporters in addition to the P-gp transporter. Cyclosporin A is an inhibitor of P-gp, multidrug resistance-associated protein 2, and the organic anion transporter protein-C; elacridar inhibits the P-gp and breast cancer-resistant protein transporters, and verapamil inhibits several organic cation transporters in addition to the P-gp transporter (US Department of Health and Human Services et al., 2006). It is unlikely that this affected the study results because it was determined that naloxegol is not a substrate of other transporters in other assays (Data on File, 2013).

### **Brain Permeation of Naloxegol in a Rat In Situ Brain Perfusion Model**

Brain uptake rates for naloxegol, naloxone, and 2 reference standards with high or low permeability are presented in **Table 4**. The brain uptake rate of naloxegol was similar to that of atenolol, a low-permeation standard with no appreciable brain uptake, whereas the brain uptake rate of naloxone was similar to that of antipyrine, a high-permeability standard. Relative to naloxone, the brain uptake rate of naloxegol was reduced approximately 15-fold.

### **Overall Distribution of Naloxegol: Quantitative Whole-Body Autoradiography**

**Figure 4** is a representative QWBA profile of the radioactivity distribution in a male rat at 1 hour following administration of a single oral dose of [ $^{14}\text{C}$ ]naloxegol at a target dose of 50 mg/kg. The distribution of radioactivity was low or undetectable throughout the brain and spinal

JPET #239061

cord, particularly relative to its distribution in the blood. Radioactivity levels in the brain and spinal cord were not distinguishable from baseline by 24 hours postdose (**Table 5**). Total radioactivity was widely distributed to and rapidly eliminated from most tissues (**Table 5**). The relatively high levels of total radioactivity observed in the liver, kidney, and glandular and pigmented tissues were expected; high distribution in these tissues is typical of many compounds.

## DISCUSSION

In the ENS, opioid actions at  $\mu$ -opioid receptors inhibit gastrointestinal motility, transit, and secretions. These actions account for the constipating effects seen in a high proportion of patients receiving opioids for pain management (Pappagallo, 2001; Cook et al., 2008; Bell et al., 2009). In the present investigation, results demonstrate that naloxegol acts antagonistically at  $\mu$ -opioid receptors, both in vitro and in vivo; however, reduced penetration of naloxegol into the CNS in vivo restricts the action of naloxegol to the PNS, thereby targeting the cause of OIC without impacting pain management.

In vitro experiments have shown that naloxegol binds to the human  $\mu$ -opioid receptor with high affinity, acting as a competitive neutral antagonist. Collectively, these data support a selective interaction of naloxegol at the  $\mu$ -opioid receptor. Although naloxegol also appears to bind the  $\delta$ -opioid receptor, simulated exposure based on a population pharmacokinetics model (Al-Huniti et al., 2016) suggests that plasma concentrations resulting from the oral administration of naloxegol at 25 mg (the maximum clinically approved dosage) are unlikely to be high enough to approach the  $K_i$  of the human  $\delta$ -opioid receptor (**Figure 5**). Hence, we expect naloxegol to have no relevant antagonism of  $\delta$ -opioid receptors in vivo at recommended doses in patients with OIC.

Based on the affinity of naloxegol determined at the cloned rat  $\kappa$ -opioid receptors ( $K_i$  = 8.65 nM), naloxegol is likely to have significant binding to peripheral  $\kappa$ -opioid receptors in humans at therapeutic doses. In addition, in the human  $\kappa$ -opioid receptor [ $^{35}$ S]GTP $\gamma$ S functional assay, naloxegol was found to be a partial agonist at the receptor (EC $_{50}$  of 45 nM, E $_{max}$  of 39%). Hence, a potential clinical effect of naloxegol at peripheral  $\kappa$ -opioid receptors cannot be ruled out. However, as the heterologous over-expression of human  $\kappa$ -opioid receptors in the

[<sup>35</sup>S]GTPγS functional assay (1700 fmol/mg protein) can amplify low levels of partial agonism, the isolated field-stimulated rabbit *vas deferens* assay was utilized in order to determine whether the partial κ-agonism of naloxegol in the [<sup>35</sup>S]GTPγS assay translates to a more physiological system. In the rabbit *vas deferens* assay, naloxegol elicited no agonist activity at κ-opioid receptors at concentrations up to 10 μM. Thus, the partial agonism of naloxegol at human κ-opioid receptors *in vitro* might not translate to actual κ-agonism in humans. Nonetheless, peripheral κ-opioid agonists such as asimadoline and fedotozine were found to be safe and well tolerated in clinical trials (Mandrel et al., 2010; Delvaux 2001), and hence agonism of peripheral κ-opioid receptors is likely to cause no safety and tolerability concerns. Specific effects related to agonism of central κ-opioid receptors such as dysphoria, sedation and increased diuresis were not observed in clinical trials with naloxegol (Eldon et al., 2015; Chey et al., 2014; Webster et al., 2014).

The PAMORAs naloxegol and methylnaltrexone and the centrally acting agent naloxone have a morphinan ring-based structure in common (US National Library of Medicine TOXNET Toxicology Data Network, 2015) whereas alvimopan, a PAMORA approved for the treatment of postoperative ileus, belongs to a different chemical class (Kraft et al., 2010). The selectivity profile for naloxegol at opioid receptor subtypes *in vitro* (**Table 2**) is comparable to that of methylnaltrexone and naloxone (Beattie et al., 2007), with a rank order of affinities of  $\mu \leq \kappa < \delta$ . Like naloxone, naloxegol is a neutral antagonist at the human μ-opioid receptor, with essentially no direct agonist activity (5.1% at 30 μM in the low μ-opioid receptor expression system and 7.8% at 5 μM in the higher expression system). Methylnaltrexone shows a small degree of partial μ-agonism in our experiments (14.4%), and 9% to 11% according to a previous report also using [<sup>35</sup>S]GTPγS as the functional assay (Beattie et al., 2007). However, an important difference between PAMORAs

and naloxone is that doses of naloxone sufficient to reverse the GI-related effects of opioid agonists in vivo also inhibit the centrally mediated effects of opioids in mice (Zimmerman et al., 1994), rats (Brown et al., 1983; Gmerek et al., 1986), and humans (Sykes, 1996; Liu and Wittbrodt, 2002). This is explained by the ability of naloxone to penetrate the CNS, limiting its utility for patients with OIC. In the context of CNS uptake and potential to reverse the analgesic effect of opioids, the PEG moiety of naloxegol is important because it confers properties that limit its passive permeability through CNS membranes and render it a substrate for the P-gp transporter, thereby limiting its distribution into the CNS (Faassen et al., 2003). Results of the Caco2 transport assay suggest that the PEG moiety of naloxegol reduces its passive permeability compared with naloxone and makes it susceptible to efflux by P-gp.

The P-gp transporter acts as an important gatekeeper into the CNS and is capable of expelling a range of foreign compounds from the CNS (Osherovich, 2009). This same activity can be exploited to restrict the distribution of appropriately designed drugs to the periphery, thereby limiting the potential for CNS effects. P-gp is able to restrict the distribution of naloxegol to the CNS, as demonstrated by results from the brain uptake and QWBA studies in the rat. The CNS distribution of naloxegol when coadministered with a strong P-gp inhibitor has been tested in a drug–drug interaction study with quinidine and was found to be unaffected (Bui et al., 2016). This is because currently marketed drugs that are P-gp inhibitors are not sufficiently potent to inhibit P-gp at the BBB (Kalvass et al., 2013).

Overall, the results of in vivo assessments of the effects of naloxegol on the PNS- and CNS-mediated effects of morphine are consistent with the study results showing a decreased rate of brain uptake for naloxegol compared with naloxone. Naloxegol, a PEGylated derivative of naloxol, which is derived from naloxone, demonstrates a significant reduction in antagonism of

JPET #239061

CNS opiate receptors (enabling the retention of morphine-induced analgesia) whilst not abolishing the peripherally mediated receptor antagonist properties of naloxone. Indeed, naloxegol demonstrated the ability to reverse morphine-induced GI transit delay while maintaining a substantial analgesic effect. The latter findings are complemented by brain permeation studies in the rat, which revealed that naloxegol penetrated the CNS 15 times more slowly than naloxone. QWBA analysis supports the findings from the in vitro Caco2 and in vivo brain permeation studies, depicting the poor distribution of drug-derived radioactivity throughout the tissues of the CNS. The in vivo pharmacology studies of naloxegol also support clinical pharmacodynamic data from a single ascending dose study in which naloxegol reduced orocecal transit time in healthy male volunteers who had been administered morphine, demonstrating dose-ordered antagonism of the peripheral effects of morphine while producing no change in morphine-induced miosis, a centrally mediated effect (Eldon et al., 2015).

JPET #239061

## CONCLUSIONS

The combined results of these studies corroborate information from the phase 3 clinical studies that demonstrated that naloxegol relieves symptoms associated with OIC in patients with chronic noncancer pain via antagonism of the  $\mu$ -opioid receptor in the ENS while preserving opioid-induced analgesia mediated by the CNS (Chey et al., 2014; Webster et al., 2014).

JPET #239061

## **ACKNOWLEDGMENTS**

Editorial support was provided by Regina E. Burris, PhD, and Diane DeHaven-Hudkins, PhD, from Complete Healthcare Communications, LLC (Chadds Ford, PA).

JPET #239061

## **AUTHORSHIP CONTRIBUTIONS**

*Participated in research design:* Sostek, Floettmann, Payza, and Eldon.

*Conducted experiments:* Payza and Eldon.

*Contributed new reagents or analytic tools:* Eldon.

*Performed data analysis:* Bui, Floettmann, and Payza.

*Wrote or contributed to the writing of the manuscript:* Sostek, Bui, Floettmann, Payza, and Eldon.

## REFERENCES

- Al-Huniti N, Chapel S, Xu H, Bui KH and Sostek M (2016) Population pharmacokinetics of naloxegol in a population of 1247 healthy subjects and patients. *Br J Clin Pharmacol* **81**:89-100.
- Beattie DT, Cheruvu M, Mai N, O'Keefe M, Johnson-Rabidou S, Peterson C, Kaufman E and Vickery R (2007) The in vitro pharmacology of the peripherally restricted opioid receptor antagonists, alvimopan, ADL 08-0011 and methylnaltrexone. *Naunyn Schmiedeberg's Arch Pharmacol* **375**:205-220.
- Bell T, Annunziata K, Leslie JB (2009a) Opioid-induced constipation negatively impacts pain management, productivity, and health-related quality of life: findings from the National Health and Wellness Survey. *J Opioid Manag* **5**:137-44.
- Bell TJ, Panchal SJ, Miaskowski C, Bolge SC, Milanova T and Williamson R (2009b) The prevalence, severity, and impact of opioid-induced bowel dysfunction: results of a US and European Patient Survey (PROBE 1). *Pain Med* **10**:35-42.
- Brown DR, Robertson MJ and Goldberg LI (1983) Reversal of morphine-induced catalepsy in the rat by narcotic antagonists and their quaternary derivatives. *Neuropharmacology* **22**:317-321.
- Bui K, She F, Zhou D, Butler K, Al-Huniti N and Sostek M (2016) The effect of quinidine, a strong P-glycoprotein inhibitor, on the pharmacokinetics and central nervous system distribution of naloxegol. *J Clin Pharmacol* **56**:497-505.
- Chey WD, Webster L, Sostek M, Lappalainen J, Barker PN and Tack J (2014) Naloxegol for opioid-induced constipation in patients with noncancer pain. *N Engl J Med* **370**:2387-2396.

JPET #239061

Cook SF, Lanza L, Zhou X, Sweeney CT, Goss D, Hollis K, Mangel AW and Fehnel SE (2008)

Gastrointestinal side effects in chronic opioid users: results from a population-based survey.

*Aliment Pharmacol Ther* **27**:1224-1232.

Data on File. AstraZeneca, Wilmington, DE. 2013.

Delvaux M. (2001) Pharmacology and clinical experience with fedotozine. *Expert Opin Investig*

*Drugs* **10**:97-110.

Eldon MA, Kugler AR, Medve RA, Bui K, Butler K and Sostek M (2015) Safety, tolerability,

pharmacokinetics, and pharmacodynamic effects of naloxegol at peripheral and central nervous system receptors in healthy male subjects: a single ascending-dose study. *Clin*

*Pharmacol Drug Dev* **4**:434-441.

Faassen F, Vogel G, Spanings H and Vromans H (2003) Caco-2 permeability, P-glycoprotein

transport ratios and brain penetration of heterocyclic drugs. *Int J Pharm* **263**:113-122.

Fernandes AW, Kern DM, Datto C, Chen YW, McLeskey C, Tunceli O (2016) Increased Burden

of Healthcare Utilization and Cost Associated with Opioid-Related Constipation Among Patients with Noncancer Pain. *Am Health Drug Benefits* **9**(3):160-70.

Garnock-Jones KP (2015) Naloxegol: a review of its use in patients with opioid-induced

constipation. *Drugs* **75**:419-425.

Gmerek DE, Cowan A and Woods JH (1986) Independent central and peripheral mediation of

morphine-induced inhibition of gastrointestinal transit in rats. *J Pharmacol Exp Ther* **236**:8-13.

Kalvass JC, Polli JW, Bourdet DL, Feng B, Huang SM, Liu X, Smith QR, Zhang LK, Zamek-

Gliszczyński MJ and International Transporter Consortium (2013) Why clinical modulation

of efflux transport at the human blood-brain barrier is unlikely: the ITC evidence-based position. *Clin Pharmacol Ther* **94**:80-94.

Kraft M, MacLaren R, Du W, et al. (2010) Alvimopan (Entereg) for the management of postoperative ileus in patients undergoing bowel resection. *P&T* 2010;**35**:44–49.

Koopmans-Klein G, Wagemans MFM, Wartenberg HCH, Van Megen YJB and Huygen FJPM (2016) The efficacy of standard laxative use for the prevention and treatment of opioid induced constipation during oxycodone use: a small Dutch observational pilot study. *Expert Rev Gastroenterol Hepatol* **10**:547-553.

Liu M and Wittbrodt E (2002) Low-dose oral naloxone reverses opioid-induced constipation and analgesia. *J Pain Symptom Manage* **23**:48-53.

LoCasale RJ, Datto C, Margolis MK and Coyne KS (2016) Satisfaction with therapy among patients with chronic noncancer pain with opioid-induced constipation. *J Manag Care Spec Pharm* **22**:246-253.

Mangel AW, Williams VS (2010) Asimadoline in the treatment of irritable bowel syndrome. *Expert Opin Investig Drugs* **10**:1257-64.

Meng F, Xie GX, Thompson RC, Mansour A, Goldstein A, Watson SJ and Akil H (1993) Cloning and pharmacological characterization of a rat kappa opioid receptor. *Proc Natl Acad Sci U S A* **90**:9954-9958.

Movantik® (naloxegol). Full Prescribing Information, AstraZeneca Pharmaceuticals LP, Wilmington, DE. 2015.

Moventig (naloxegol). Full Prescribing Information, AstraZeneca AB, Södertälje, Sweden. 2014.

Oka T, Negishi K, Suda M, Matsumiya T, Inazu T and Ueki M (1981) Rabbit vas deferens: a specific bioassay for opioid  $\kappa$ -receptor agonists. *Eur J Pharmacol* **73**:235-236.

JPET #239061

- Osherovich L (2009) Beating the brain's bouncer. *SciBX* **2**(19); doi10.1038/scibx.2009.773..
- Pappagallo M (2001) Incidence, prevalence, and management of opioid bowel dysfunction. *Am J Surg* **182**:11S-18S.
- Payza K (2003) Binding and activity of opioid ligands at the cloned human delta, mu, and kappa receptors, in *The Delta Receptor* (Chang KJ, Porreca F and Wood JH eds) pp 261-275, Marcel Dekker, New York, NY.
- Simonin F, Befort K, Gavériaux-Ruff C, Matthes H, Nappey V, Lannes B, Micheletti G and Kieffer B (1994) The human  $\delta$ -opioid receptor: genomic organization, cDNA cloning, functional expression, and distribution in human brain. *Mol Pharmacol* **46**:1015-1021.
- Sykes NP (1996) An investigation of the ability of oral naloxone to correct opioid-related constipation in patients with advanced cancer. *Palliat Med* **10**:135-144.
- Tuteja AK, Biskupiak J, Stoddard GJ and Lipman AG (2010) Opioid-induced bowel disorders and narcotic bowel syndrome in patients with chronic non-cancer pain. *Neurogastroenterol Motil* **22**:424-430, e496.
- US Department of Health and Human Services, US Food and Drug Administration and Center for Drug Evaluation and Research (2006) Guidance for industry. Drug interaction studies — study design, data analysis, and implications for dosing and labeling. Available at: <http://www.fda.gov/OHRMS/DOCKETS/98fr/06d-0344-gdl0001.pdf>. Accessed July 15, 2016.
- US National Library of Medicine TOXNET Toxicology Data Network. Available at: <http://chem.sis.nlm.nih.gov/chemidplus/>. Accessed July 20, 2016.

JPET #239061

- Webster L, Chey WD, Tack J, Lappalainen J, Diva U and Sostek M (2014) Randomised clinical trial: the long-term safety and tolerability of naloxegol in patients with pain and opioid-induced constipation. *Aliment Pharmacol Ther* **40**:771-779.
- Zhang S, Tong Y, Tian M, DeHaven RN, Cortes Burgos L, Mansson E, Simonin F, Kieffer B and Yu L (1998) Dynorphin A as a potential endogenous ligand for four members of the opioid receptor gene family. *J Pharmacol Exp Ther* **286**:136-141.
- Zimmerman DM, Gidda JS, Cantrell BE, Schoepp DD, Johnson BG and Leander JD (1994) Discovery of a potent, peripherally selective trans-3,4-dimethyl-4-(3-hydroxyphenyl)piperidine opioid antagonist for the treatment of gastrointestinal motility disorders. *J Med Chem* **37**:2262-2265.

## FOOTNOTES

This study and editorial support of this publication were funded by AstraZeneca Pharmaceuticals LP (Wilmington, DE).

Parts of this work were presented previously as an oral presentation: Tack J, Cimen A, Bui K, Sostek M. Naloxegol for opioid-induced constipation: mechanism of action and clinical implications. *United European Gastroenterology J.* [Conference Abstract]. 2015;3(5S):A20.

Part of this work was presented previously as a poster: Eldon MA, Song D, Neumann TA, Wolff R, Cheng L, Viegas TX, Bentley MD, Fishburn CS, Kugler AR. NKTR-118 (oral PEG-naloxol), a PEGylated derivative of naloxone: demonstration of selective peripheral opioid antagonism after oral administration in preclinical models. Presented at: American Academy of Pain Management 18th Annual Clinical Meeting; September 27–30, 2007; Las Vegas, NV.

Part of this work was presented previously as a poster: Tack J, Cimen A, Bui K, Sostek M. Naloxegol for opioid-induced constipation: mechanism of action and clinical implications. *Gastroenterology.* [Conference Abstract]. 2016;150(4 Suppl 1):S538.

JPET #239061

Reprint requests should be addressed to: Khanh Bui, PhD  
AstraZeneca Pharmaceuticals LP  
35 Gatehouse Dr,  
Waltham, MA, USA 02451  
Email: [Khanh.Bui@astrazeneca.com](mailto:Khanh.Bui@astrazeneca.com)

<sup>1</sup>EF is an employee of AstraZeneca UK Ltd, Cambridge, United Kingdom.

<sup>2</sup>KB was an employee of AstraZeneca Pharmaceuticals LP, Wilmington, Delaware, at the time this research was conducted and is currently a contractor of AstraZeneca Pharmaceuticals LP, Waltham, Massachusetts.

<sup>3</sup>MS was an employee of AstraZeneca Pharmaceuticals LP, Gaithersburg, Maryland, at the time this research was conducted and is currently an employee of Pfizer, Collegeville, Pennsylvania.

<sup>4</sup>KP was an employee of AstraZeneca Canada, Montreal, Quebec, Canada, at the time this research was initiated and was an employee of NEOMED Institute (Saint-Laurent, Quebec, Canada) during the latter part of the research.

<sup>5</sup>ME is an employee of Nektar Therapeutics, San Francisco, California.

## FIGURE LEGENDS

**Figure 1.** The chemical structure of naloxegol, a PEGylated derivative of naloxol, which is derived from naloxone. The box encompasses the low-molecular-weight PEG chain that is covalently bound to the morphinan ring-based structure of naloxone. PEG=polyethylene glycol.

**Figure 2.** Competitive antagonism of naloxegol at the human  $\mu$ -opioid receptor. The effects of 3 different concentrations of naloxegol (A) and methylnaltrexone (B) on morphine agonist concentration–response curves, as measured by [ $^{35}$ S]GTP $\gamma$ S binding (1 of 3 independent experiments) are shown. Each compound elicited a rightward shift in the morphine concentration–response curve with no reduction in  $E_{\max}$ . [ $^{35}$ S]GTP $\gamma$ S=guanosine 5-*O*-(3-[ $^{35}$ S]thio)triphosphate.

**Figure 3.** Naloxegol is a competitive neutral antagonist of morphine at the human  $\mu$ -opioid receptor. This Schild plot depicts the effects of naloxegol (*diamonds*) and methylnaltrexone (*squares*) on morphine agonist concentration–response curves at the human  $\mu$ -opioid receptor, as measured by [ $^{35}$ S]GTP $\gamma$ S binding (pooled results of 3 independent experiments for each compound). Note the respective Schild slopes:  $-1.03$  for naloxegol and  $-0.982$  for methylnaltrexone. DR=dose ratio; [ $^{35}$ S]GTP $\gamma$ S=guanosine 5-*O*-(3-[ $^{35}$ S]thio)triphosphate.

**Figure 4.** Quantitative whole-body autoradiogram of sections through a male pigmented rat at 1 hour after the administration of a single oral dose of [ $^{14}$ C]naloxegol (50 mg/kg). Note the absence of radioactivity in the brain.

JPET #239061

**Figure 5.** The predicted plasma concentration–time profile for oral naloxegol 25 mg. At this maximum clinically approved dose, naloxegol exposure is predicted to be insufficient to antagonize the  $\delta$ -opioid receptor. The light blue area represents the 90% CI (N=500 simulations from phase 3 studies).

**Table 1. Details of Opioid Receptor Binding Studies**

CHO=Chinese hamster ovary; DADLE=D-Ala-D-Leu-enkephalin; HEK=human embryonic kidney;  $K_d$ =equilibrium dissociation

Receptor	Membrane	Radioligand		Nonspecific	Incubation		
Assay	Source	(Concentration)	$K_d$	(Concentration)	Conditions	Incubation Buffer	Reference
$\mu$	Human	[ <sup>3</sup> H]diprenorphine	0.14	Naltrexone	120 min	50 mM Tris-HCl (pH 7.4),	(Zhang et al.,
	recombinant	(0.4 nM)	nM	(1 $\mu$ M)	RT	100 mM NaCl, 5 mM MgCl <sub>2</sub>	1998)
	(HEK-293						
	cells)						
$\delta$	Human	[ <sup>3</sup> H]DADLE	0.73	Naltrexone	120 min	50 mM Tris-HCl (pH 7.4),	(Simonin et
	recombinant	(0.5 nM)	nM	(10 $\mu$ M)	RT	5 mM MgCl <sub>2</sub>	al., 1994)
	(CHO cells)						
$\kappa$	Rat	[ <sup>3</sup> H]U69593	2 nM	Naloxone	60 min RT	50 mM Tris-HCl (pH 7.4),	(Meng et al.,
	recombinant	(1 nM)		(10 $\mu$ M)		10 mM MgCl <sub>2</sub> , 1 mM EDTA	1993)
	(CHO cells)						

constant of the radioligand; RT=room temperature; U69593=N-methyl-2-phenyl-N-(7-pyrrolidin-1-yl-1-oxaspiro[4.5]decan-8-yl)acetamide.

**Table 2. Binding Affinity of Naloxegol to Opioid Receptor Subtypes**

Receptor Subtype	Naloxegol pK <sub>i</sub>	Methylnaltrexone pK <sub>i</sub>	<i>P</i> Value <sup>a</sup>
μ (human)	8.13±0.06	7.66±0.08	<0.05
δ (human)	6.69±0.05	5.72±0.35	<0.001
κ (rat)	8.06±0.05	7.96±0.17	NS

ANOVA=analysis of variance; pK<sub>i</sub>=negative logarithm of the equilibrium dissociation constant for the inhibitor; NS=not significant.

Data are mean ± S.E.M. values from 3 independent experiments.

<sup>a</sup>Comparison of pK<sub>i</sub> values by 1-way ANOVA followed by Bonferroni multiple comparison test.

**Table 3. Apparent Permeability and Efflux of Naloxegol in the Presence and Absence of P-gp Inhibitors, Demonstrated by the Caco2 Transport Assay**

Drug <sup>a</sup>	P-gp Inhibitor	P <sub>app</sub> A→B	P <sub>app</sub> B→A	Efflux Ratio
		(10 <sup>-6</sup> cm/s)	(10 <sup>-6</sup> cm/s)	
Naloxegol <sup>b</sup>	—	0.7	8.4	12.0
Naloxegol <sup>c</sup>	Cyclosporin A, 10 μM	1.8	1.8	1.0
Naloxegol <sup>c</sup>	Elacridar, 0.5 μM	2.3	2.5	1.1
Naloxegol <sup>c</sup>	Verapamil, 100 μM	1.3	1.7	1.3
Naloxone <sup>b</sup>	—	27.3	25.0	0.9
Naloxone <sup>c</sup>	Cyclosporin A, 10 μM	28.4	23.7	0.8
Naloxone <sup>c</sup>	Elacridar, 0.5 μM	24.8	27.3	1.1
Naloxone <sup>c</sup>	Verapamil, 100 μM	24.5	24.9	1.0

Caco2=human colon adenocarcinoma cell line; P<sub>app</sub>=apparent permeability; P-gp=P-glycoprotein.

<sup>a</sup>Naloxegol and naloxone were tested at 10-μM concentration in all experiments.

<sup>b</sup>P<sub>app</sub> and efflux ratio data are the arithmetic means of 3 separate experiments, each conducted in duplicate.

<sup>c</sup>P<sub>app</sub> data shown are the arithmetic means of respective single experiments conducted in duplicate.

**Table 4. Comparative Brain Permeation of Naloxegol in the Rat**

<b>Drug</b>	<b>Brain Uptake (pmol/g brain/s)</b>
Naloxegol <sup>a</sup>	4.1±1.4
Naloxone <sup>a</sup>	60.2±13.7
Antipyrine <sup>b,c</sup>	28.2±14.3
Atenolol <sup>c,d</sup>	5.2±2.2

Data are mean ± S.D.

<sup>a</sup>n=3.

<sup>b</sup>Reference standard with high penetration.

<sup>c</sup>n=32.

<sup>d</sup>Reference standard with low penetration.

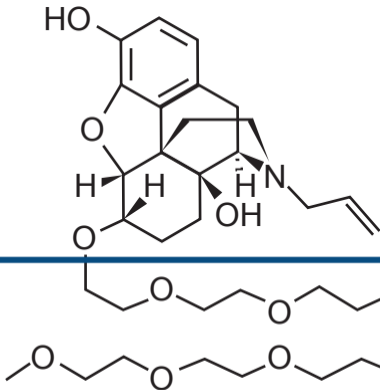
**Table 5. Concentrations of Radioactivity in Selected Tissues After Administration of [<sup>14</sup>C]Naloxegol (50 mg/kg) to Adult Male and Pregnant Female Rats**

Tissues (M/F)	Concentration (µg Eq/g)					
	0.5 h	1 h	4 h	24 h	48 h	168 h
Blood (M)	3.03	4.11	2.14	ND	ND	ND
Blood (F)	12.38	7.80	6.92	ND	ND	NST
Brain (M)	BLQ	0.21	0.14	ND	ND	ND
Brain (F)	0.34	0.15	0.28	ND	ND	NST
Large intestine wall (M)	8.83	14.09	12.09	ND	ND	ND
Large intestine wall (F)	23.61	25.20	37.45	ND	ND	NST
Liver (M)	43.40	66.49	58.74	4.61	7.74	1.03
Liver (F)	68.67	56.01	58.78	4.42	2.68	NST
Spinal cord (M)	0.06	0.15	0.02	ND	ND	ND
Spinal cord (F)	0.24	0.10	0.12	ND	ND	NST
Placenta (F)	21.09	12.89	14.78	0.16	BLQ	NST
Uterus (F)	31.19	82.21	185.03	19.04	4.00	NST
Fetus (whole) (F)	3.10	1.99	2.23	0.17	BLQ	NST

BLQ=below the limit of reliable quantitation; ND=not distinguishable; NST=no sample taken.

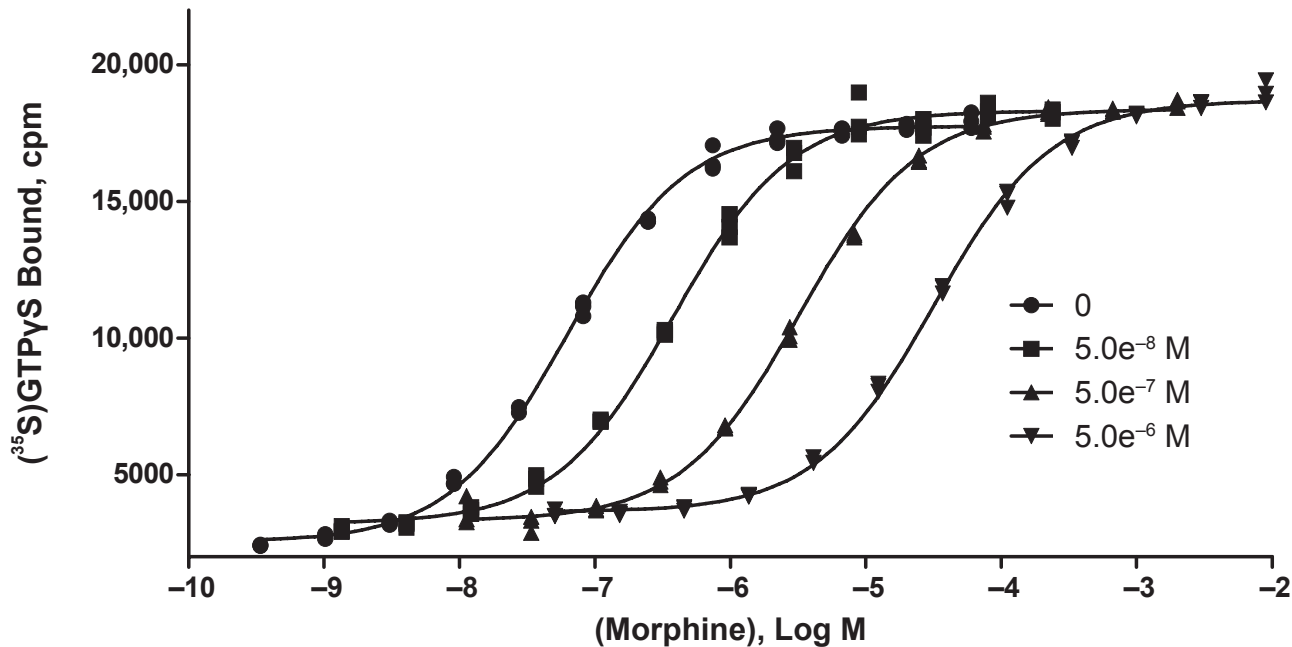
JPET #239061

1



# Morphine + Naloxegol

2A



# Morphine + Methylnaltrexone

2B

