

JPET#178574

**THIENOPYRIDINES, BUT NOT ELINOUREL, RESULT IN OFF-TARGET
EFFECTS AT THE VESSEL WALL THAT CONTRIBUTE TO BLEEDING**

Patrick André, Francis DeGuzman, Helena Haberstock-Debic, Scott Mills,
Yvonne Pak, Mayuko Inagaki, Anjali Pandey, Stanley Hollenbach, David R.
Phillips, and Pamela B. Conley

Portola Pharmaceuticals Inc. (*P.A., F.D.G., H.H.D., S.M., Y.P., M.I., A.P., S.H.,
D.R.P., P.B.C.*) South San Francisco, CA

JPET#178574

Running title: Thienopyridines effects on bleeding

Corresponding author:

Pamela B. Conley, PhD
Portola Pharmaceuticals, Inc.
270 East Grand Avenue, South San Francisco, CA 94080.
Phone (650.246.7525),
Fax (650.246.7776).
Email: pconley@portola.com

Number of Text pages: 35

Number of tables: 0

Number of figures: 7

Number of references: 41

Number of words in the Abstract: 218

Number of words in the Introduction: 552

Number of words in the Discussion: 1313

Abbreviations used in this paper: ADP, adenosine diphosphate; WT, wild-type
mice

Recommended section: Cardiovascular

JPET#178574

Abstract

Clinical studies with clopidogrel or prasugrel show that while increased inhibition of P2Y₁₂ and platelet function improves efficacy, bleeding is also increased. Other preclinical and clinical studies have suggested greater therapeutic index (TI) with reversible inhibitors and disproportionate effects of thienopyridines on bleeding at high doses. We utilized multiple *in vivo* (FeCl₃-induced arterial thrombosis in mesenteric arteries; blood loss following tail trans-section; platelet deposition and wound closure time in a micropuncture model in mesenteric veins) and *ex vivo* (light transmittance aggregometry, PT, aPTT) mouse models to: i) compare the TI of clopidogrel, prasugrel and elinogrel, a reversible, competitive antagonist, with that of P2Y₁₂^{-/-} mice. ii) determine whether the bleeding consequences of the thienopyridines are attributed only to the inhibition of P2Y₁₂. Data indicated greater (elinogrel) and decreased (thienopyridines) TI when compared to P2Y₁₂^{-/-} mice. The impaired TI associated with the thienopyridines was not attributed to non-P2Y₁₂ activities on platelet function or coagulation but related to a direct effect at the vessel wall (inhibition of vascular tone). Further analysis showed that prasugrel off-target effect was dose- and time-dependent and of a reversible nature. In conclusion, the TI of thienopyridines in the mouse may be decreased by P2Y₁₂-independent off-target effects at the vessel wall while that of elinogrel may be enhanced by the reversible, competitive nature of the antiplatelet agent.

JPET#178574

Introduction

The thienopyridine clopidogrel has emerged as a primary drug for the treatment and the prevention of arterial thrombosis in patients with cardiovascular disease (1996; Mehta et al., 2001; Yusuf et al., 2001). The pharmacologic activity of clopidogrel requires metabolism by cytochrome P450 to generate a highly unstable active metabolite to inhibit platelet function (Savi et al., 1992; Savi et al., 2000). Although the pharmacologic target of this drug was not known upon approval, work in our laboratory using an expression cloning strategy identified the target as P2Y₁₂, a Gi-coupled receptor on platelets (Foster et al., 2001; Hollopeter et al., 2001). In a subsequent study, we generated P2Y₁₂^{-/-} mice and showed that P2Y₁₂ functions in arterial thrombosis by maintaining thrombus stability (Andre et al., 2003a). While increased doses of clopidogrel provide increased inhibition of P2Y₁₂ and increased efficacy, this is invariably associated with increased bleeding (Mehta and Van de Werf, 2009). That this is a cause and effect relationship is supported by recent data (Rehmel et al., 2006) showing that prasugrel, another thienopyridine that also generates an active metabolite to irreversibly inhibit P2Y₁₂ and platelet function, provides increased efficacy and increased bleeding (Wiviott et al., 2007).

Although it is commonly anticipated that bleeding propensity will parallel the anti-aggregatory effects of a P2Y₁₂ antagonist, there have been multiple reports of excessive bleeding associated with thienopyridines. For example, studies performed in rabbits suggest that unexplained bleeding occurs above levels of

JPET#178574

clopidogrel required to provide complete inhibition of platelet aggregation (Wong et al., 2009). Particularly, high doses of clopidogrel providing limited incremental benefits in preventing arterial thrombosis have been associated with disproportionate levels of bleeding in both rabbits and rats (Schumacher et al., 2007; Wong et al., 2007). Similar discrepancies have been reported in humans, with *CYP2C19*2* carriers having higher rate of thrombotic events but similar rates of bleeding as non-carriers (Mega et al., 2009). Also, marked bleeding has been reported in the TRITON-TIMI 38 trial with prasugrel (Wiviott et al., 2007). In contrast, reversible antagonism of P2Y₁₂ has been proposed to offer a potent and safer alternative to thienopyridine agents (Storey et al., 2002; Husted et al., 2006; Wang et al., 2007; van Giezen et al., 2009) although a potential off-P2Y₁₂ effect on platelet function has also been reported for cangrelor (Srinivasan et al., 2009). Thus, while the antithrombotic activities of the thienopyridines can be directly linked to the inhibition of P2Y₁₂, platelet function and thrombosis, it is unknown whether the bleeding consequences of the thienopyridines are entirely P2Y₁₂-dependent.

The present study was designed to establish whether bleeding induced by the thienopyridines is entirely P2Y₁₂-dependent. We found that while dosing of mice with the three agents had no effects on coagulation parameters, achieved the same inhibition of arterial thrombosis and the same levels of anti-aggregatory activities *in vitro* as in P2Y₁₂^{-/-} mice, both thienopyridines caused more bleeding in two primary hemostasis models than occurred in P2Y₁₂^{-/-} mice or in WT

JPET#178574

animals treated with a reversible P2Y₁₂ antagonist (elinogrel). Furthermore, dosing of P2Y₁₂^{-/-} mice with clopidogrel or prasugrel further increased bleeding. Additional data using a mouse model of vasoconstriction indicated that one component of bleeding induced by thienopyridines is caused by inhibition of a target other than P2Y₁₂ at the vessel wall, and that unlike the effect on platelet P2Y₁₂ receptors, is of a reversible nature.

JPET#178574

Methods

Drugs

Clopidogrel was from Sequoia Research Products Ltd. (United Kingdom).

Prasugrel was from Albany Molecular Research (USA). Elinogrel (Ueno et al. 2010) was from Portola Pharmaceuticals (USA).

Animals

C57/BL6J mice (Charles River) were used for determination of antithrombotic activities of clopidogrel and prasugrel, determination of their effects on primary hemostasis and *ex vivo* platelet aggregation. P2Y₁₂ knockout mice (on a pure C57/BL6J background (>10 times backcrossed)) were used for thrombosis and hemostasis studies. All experiments were performed by investigators blinded to the different treatments. All procedures conformed to institutional guidelines and to the *Guide for the Care and Use of Laboratory Animals* (National Institutes of Health, Bethesda, Md).

Thrombosis study

Thrombosis on mouse mesenteric arteries (1000-1300 s⁻¹) was performed and recorded as previously described with minor modifications (Andre et al., 2003b). Platelets were labeled *in situ* using rhodamine 6G (0.2 mg/mL) administered through the tail vein 10 minutes before visualization of the arteries. Vessel-wall injury was induced by a 1x1-mm filter paper saturated with a 10% FeCl₃ solution. After 5 minutes, the filter paper was removed and mesenteric arteries rinsed with

JPET#178574

warmed saline (37°C). Platelet-vessel wall interactions were recorded for 40 additional minutes or until full occlusion occurred and lasted for more than 40 seconds. C57Bl6J mice were orally gavaged 48, 24 and 2 hours prior to injury with vehicle control (0.5% methylcellulose), clopidogrel (0.25, 1.5, 15 and 50 mg/kg) or prasugrel (0.1, 0.3, 1, 3, 10 mg/kg), or 2 hours (on the basis of elinogrel murine pharmacokinetic profile, see Supplemental Figure 1A) prior to injury with elinogrel (0.83, 2.5, 7.5, 20 and 60 mg/kg,).

Video analysis

Thrombosis was analyzed in real time using Simple PCI software (Andre et al., 2003a). The fluorescence intensity was recorded at a rate of 2 Hz for 40 minutes and plotted over time. Time to occlusion and time for appearance of first thrombus were analyzed.

Elinogrel plasma concentration determination

Plasma samples were analyzed for elinogrel concentration using a liquid chromatography tandem mass spectrometry (LC/MS/MS). In brief, whole blood was collected on trisodium citrate (1:9 vol) and platelet poor plasma prepared. Plasma samples were processed in a 96-well Captiva™ filter plate (0.2 µm, Varian, Inc., Palo Alto, CA). Aliquots of plasma samples were precipitated with acetonitrile containing 500 ng/mL of an internal standard (CT55951 or PRT061200) and protein precipitated. The mixture was filtered into a 96-well collection plate. The filtrate was injected onto a Sciex API4000 LC/MS/MS

JPET#178574

equipped with a turbo-ion spray source. Elinogrel and internal standard were separated on a Thermo Hypersil-Keystone Betasil C₁₈ column (4.6 x 100 mm, 5µm; Fisher Scientific, Houston, TX). A mobile phase gradient mixture of 80% mobile phase A (0.5% formic acid in water) and 20% mobile phase B (0.5% formic acid in 90% acetonitrile) to 85% mobile phase B was programmed over 2.2 minutes. The peak areas of the m/z 524 →301 product ion (elinogrel) were measured against those of the m/z 506 →283 (CT55951) or m/z 527 →304.2 (PRT061200) product ion (internal standard) in positive ion mode. The analytical range was 2.00 to 5000 ng/mL.

Ex vivo platelet aggregation study and coagulation assays

In a separate set of experiments, C57Bl6J mice were orally gavaged for 3 consecutive days with 0.5% methylcellulose (BID, in 100 µL), clopidogrel (QD, 50 mg/kg in 100 µL), prasugrel (QD, 10 mg/kg in 100 µL) or elinogrel (BID, 60 mg/kg in 100 µL). The last dose was given 3 hours prior to blood collection.

Measurements were performed using a 4-channel Chronolog lumiaggregometer using Aggrolink software. Blood samples (0.6 ml per anesthetized mouse) were obtained via intracardiac puncture (on 3.2% trisodium citrate, 1vol TSC : 9 vol of blood), centrifuged at 200xg for 10 minutes and platelet rich plasma (PRP) collected. For each dose, PRP of three animals was pooled for aggregation measurements. Experiments for each dose were repeated between 2 and 3 times, six animals each. Aliquots (250 µl) of PRP were placed in cuvettes containing magnetic stirrer bars, warmed at 37°C, and stirred for 1 minute to

JPET#178574

obtain a stable baseline. Aggregation in PRP was induced using ADP (Chronolog) at 1 and 10 μ M final concentration, collagen (Chronolog) at 10 and 5 μ g/mL, murine TRAP at 2.5 and 1 mM and change in light transmittance was recorded for an additional 8 minutes.

Frozen platelet poor plasma samples were thawed to room temperature and coagulation parameters, activated partial thromboplastin times (aPTT) and prothrombin times (PT), measured using an MLA Electra 800 automatic coagulation timer. Assay reagents for aPTTs were Dade® Actin® FS Activated PTT Reagent (purified soy phosphatides in 1×10^{-4} ellagic acid) and Calcium Chloride Solution, 0.025 Mol/L. Reagent for the PT assay was Dade® Thromboplastin C Plus (rabbit brain thromboplastin). All reagents were purchased from Siemens Healthcare Diagnostics Products, Germany.

Tail bleeding time measurement

Male mice (6-8 weeks old) were anesthetized (by subcutaneous injection) with ketamine cocktail (ketamine [40 mg/kg], xylazine [2.5 mg/kg], and acepromazine [0.75 mg/kg], Henry Schein, Melville, NY, USA) 6 minutes prior to tail transection. Mice were then placed in lateral recumbence on a heating pad (used to maintain body temperature) placed on a firm dissecting board (Richard-Allan Scientific, Kalamazoo, MI, USA) with the tail straight out. Tails were transected 2 mm from the tip with a number 10 scalpel blade (Bard-Parker; Becton Dickinson, Franklin Lakes, New Jersey, USA) and immediately immersed into a 20-ml scintillation vial (Wheaton Science Products, Millville, NJ, USA) filled with 10 mL

JPET#178574

normal saline held at 37°C by an unstirred digitally-controlled water bath (VWR International, Buffalo Grove, IL, USA). A stopwatch was started immediately upon trans-section to determine time to cessation of bleeding, frequency, and duration of re-bleed for a 15 minute period. C57Bl6J mice were orally gavaged with vehicle control, clopidogrel (1.5, 15 and 50 mg/kg) or prasugrel (1, 3, 10 mg/kg) 48, 24 and 2 hours prior to tail trans-section or 2 hours prior to trans-section with elinogrel (7.5, 20 and 60 mg/kg). In one set of experiments, P2Y₁₂^{-/-} mice were also orally gavaged (using the same regimen) with maximal doses of clopidogrel, prasugrel, elinogrel and vehicle control.

Tail blood loss measurement

Blood loss was assessed when collection of blood for bleed time determination had concluded. To measure blood loss volume, any blood collected as described above following tail transection was frozen at -80 °C overnight. After thawing the following day, 10 ml of deionized water was added to further induce hemolysis. Aliquots of each sample were analyzed via spectrophotometry (Spectramax Plus³⁸⁴, Molecular Devices, Sunnyvale, CA, USA) and diluted further (1/5, 1/10, or 1/20) if necessary. Resulting OD_{490nm} values (% T) were compared against a previously-determined standard curve to estimate the blood volume lost.

Micropuncture-induced primary hemostasis *in vivo* in mesenteric veins

JPET#178574

The *in vivo* primary hemostasis model was performed via micropuncture (using a 27 G needle) of mesenteric veins according to the model developed by van Gestel and colleagues (van Gestel et al., 2007). Briefly, 3-4 week-old anesthetized P2Y₁₂^{-/-} and WT mice previously orally gavaged (48, 24 and 2 hours prior to injury) with either 0.5% methylcellulose, clopidogrel (50 mg/kg), prasugrel (10 mg/kg) or elinogrel (60 mg/kg 2 hours prior to micropuncture) were injected with R6G (0.2 mg/ml) to fluorescently label platelets *in situ*. Using videomicroscopy, a 27G needle (mounted on a 1 ml syringe) was pressed on the mesenteric vein to induce rupture of the vascular wall. Bleeding time and platelet recruitment at site of micropuncture were then recorded for 20 minutes and quantified in real time using intravital microscopy.

***In vivo* vasoconstriction studies in mesenteric veins**

Mesenteric veins (100-190 μm diameter) from 3 to 4 week-old anesthetized P2Y₁₂^{-/-} or WT mice were observed using brightfield inverted microscopy. In a first set of experiments, mice were orally gavaged with 0.5% methylcellulose (QD), clopidogrel (50 mg/kg, QD), prasugrel (10 mg/kg, QD) or elinogrel (60 mg/kg, BID) for 3 consecutive days. Veins were stimulated by a superfusion of α,β metATP (Sigma-Aldrich; 10 μl of a 1 μM solution) 2 hours after last oral gavage. Challenge and evaluation of the vascular tone were performed by an investigator blinded to the treatment regimen. A similar experimental design was applied to WT mice treated with prasugrel (1, 3 and 10 mg/kg) or P2Y₁₂^{-/-} mice treated with prasugrel (10 mg/kg, QD) for three consecutive days and which were

JPET#178574

rendered thrombocytopenic (antiGPIIb α antibodies, 2 mg/kg; Emfret laboratories) 16 hours prior to superfusion of α,β metATP. Finally, another group of WT mice was orally gavaged with prasugrel (10 mg/kg, QD) for 3 consecutive days and their mesenteric veins challenged 1, 2, 5, 10, 24 and 48 hrs after the last oral gavage. The diameter of the mesenteric veins was monitored for 5 minutes post challenge.

Statistical analysis

Analysis was performed using the standard Student's *t* test. Statistical analysis of the blood loss study comparing doses of clopidogrel, prasugrel and elinogrel to naïve or 0.5% methylcellulose P2Y₁₂ knockout mice was performed using one-way ANOVA (Bonferroni's multiple comparison test). All values are expressed as mean \pm SEM unless otherwise specified.

JPET#178574

Results

Determination of clopidogrel, prasugrel and elinogrel doses reproducing the thrombotic profile of P2Y₁₂^{-/-} mice.

Using the FeCl₃ thrombosis model, maximal doses (**M**) of clopidogrel (50 mg/kg), prasugrel (10 mg/kg) and elinogrel (60 mg/kg) were identified that shared the phenotypic characteristics associated with the genetic targeting of P2Y₁₂ (destabilization of growing arterial thrombi preventing vascular occlusion; Figure 1A). Although these maximal doses totally inhibited occlusion, subtle differences were observed compared with P2Y₁₂^{-/-} mice as maximal clopidogrel dose did not reach similar levels of inhibition achieved by P2Y₁₂ gene targeting on the initial rate of thrombus growth ($p < 0.0001$ vs P2Y₁₂^{-/-} for time for appearance of first thrombus; Figure 1B). In addition, while preventing vascular occlusion, there were more fluorescent platelets deposited throughout the 40 min observation period with the maximal dose of clopidogrel (Figure 1C). In contrast, the maximal doses of prasugrel and elinogrel had a thrombosis phenotype identical to that of P2Y₁₂^{-/-} mice. Doses of clopidogrel (1.5 and 15 mg/kg), prasugrel (1 and 3 mg/kg) and elinogrel (7.5 and 20 mg/kg) were also identified that provided similar but lower levels of inhibition on thrombus stability and classified intermediate (**I**) and high (**H**), respectively. Determination of elinogrel plasma concentration performed 2 min after vascular occlusion or 42 minutes after injury (for patent arteries) indicated that maximum levels of inhibition with elinogrel were achieved beyond 1 µg/mL (Figure 2A). Interestingly, in a separate group of animals, we found that the *ex vivo* pharmacodynamic monitoring (by measurement of ADP-

JPET#178574

induced platelet aggregation) of elinogrel was biased by the concentration of ADP utilized to induce platelet aggregation. This was highlighted by the fact that the 60 mg/kg dose provided equivalent effect to prasugrel and clopidogrel on thrombosis *in vivo*, but failed at blocking platelet aggregation induced by 10 μ M ADP although it abolished that induced by 1 μ M ADP (Figure 2B). Further analysis of the pharmacologic effects of the maximal dose of the three agents on platelet aggregation induced by collagen and murine TRAP demonstrated that similar levels of inhibition were achieved that closely reproduce the phenotype associated with P2Y₁₂-deficiency (Figure 3A; see also (Andre et al., 2003a)). Furthermore, analysis of prothrombin time and aPTT indicated that neither the pharmacological modulation nor P2Y₁₂ gene targeting affected coagulation parameters (Figures 3B, C).

P2Y₁₂ antagonists and P2Y₁₂ gene targeting differentially affect bleeding time and blood loss following tail trans-section

We studied the effects of clopidogrel, prasugrel and elinogrel on bleeding frequency, and blood loss and compared their effects to the phenotype of P2Y₁₂^{-/-} mice. Animals treated with placebo (n = 40) stopped bleeding before 2 min following tail trans-section but subsequently displayed multiple periods of rebleed and cessation of blood loss (Figure 4). At the intermediate doses, 7 out of 10 (clopidogrel), 10 out of 10 (prasugrel) and 2 out of 10 animals (elinogrel) had continuous bleeding that lasted for the duration of the 15 min observation period (Figure 4). At the high doses, 10 out of 10 animals administered clopidogrel, 9

JPET#178574

out of 10 (prasugrel) and 3 out of 10 (elinogrel) animals displayed continuous bleeding. For the maximal doses, all animals treated with clopidogrel and prasugrel as well as P2Y₁₂^{-/-} mice but only 4 out of 10 animals treated with elinogrel had continuous bleeding (Figure 4).

Blood loss measurements also revealed differences between the three P2Y₁₂ antagonists and P2Y₁₂^{-/-} mice. Maximal clopidogrel and prasugrel doses significantly increased volume of blood loss when compared to P2Y₁₂^{-/-} mice (clopidogrel, 551 ± 43 μl; prasugrel, 561 ± 73 μl; P2Y₁₂^{-/-} mice, 293 ± 38 μl, † P<0.0005). In addition, animals treated with the intermediate doses of clopidogrel and prasugrel had equal (clopidogrel) or greater (prasugrel) volume of blood loss when compared to the P2Y₁₂^{-/-} mice (Figure 5A), despite the fact that they were not able to prevent vascular occlusion (Figure 1A), indicating that some levels of bleeding could not be accounted for by the sole anti-platelet effect. Data obtained with thienopyridines were in sharp contrast with the volume of blood loss associated with elinogrel which in all cases, were less than the blood loss observed in P2Y₁₂^{-/-} mice.

Clopidogrel and prasugrel increase blood loss when dosed in P2Y₁₂^{-/-} mice

Since the maximal doses of clopidogrel and prasugrel extended blood loss beyond the level of the P2Y₁₂^{-/-} mouse, we next asked whether they would affect blood loss when administered to P2Y₁₂-deficient animals. When compared with their respective vehicle control, oral administration of clopidogrel and prasugrel

JPET#178574

but not elinogrel significantly increased the volume of blood loss in P2Y₁₂^{-/-} mice (Figure 5C).

Effects of P2Y₁₂ antagonists and P2Y₁₂ gene targeting on platelet deposition, bleeding and closure time following mesenteric vein micropuncture

The micropuncture model is characterized by a rapid accumulation of platelets at the vascular wound in the ~ 20 seconds post-vascular injury independently of the treatment or genotype (represented in Figure 6A) followed by a reopening of the wound. Animals treated with the maximal doses of the P2Y₁₂ antagonists had slightly less (clopidogrel and prasugrel) or longer (elinogrel) periods of cessation of bleeding than occurred in P2Y₁₂^{-/-} mice (Figure 6B). Vessels from animals treated with the thienopyridines had delayed closure and reduced platelet deposition (Figure 6C, D) when compared with P2Y₁₂^{-/-} mice. In contrast, elinogrel presented a faster closure of the vascular wound that was in part related to an increase in platelet deposition (Figure 6C, D).

Clopidogrel and prasugrel block vasoconstriction in mesenteric veins

While studying platelet deposition in the micropuncture model, we noticed that the mesenteric veins of thienopyridine-treated mice had a reduced constriction in response to mechanical injury. To investigate further a potential effect of these pharmacological agents on the vascular tone, we next studied the response of

JPET#178574

mesenteric veins to an *in situ* stimulation by α,β metATP (1 μ M), a P2X₁ agonist that is not sensitive to CD39-mediated degradation *in vivo*.

Mesenteric veins from P2Y₁₂^{-/-}, elinogrel- or vehicle control-treated mice rapidly constricted following stimulation by α,β metATP. The constriction of mesenteric veins from P2Y₁₂^{-/-} mice was not sustained when compared with veins from WT mice treated with 0.5% methylcellulose or elinogrel (M), indicating a possible role of vascular P2Y₁₂ in the sustained constriction of the vessel wall (as suggested by Wihlborg and collaborators (Wihlborg et al., 2004)).

In contrast, mesenteric veins from animals treated with the maximal doses of clopidogrel and prasugrel, only partially (clopidogrel) or minimally (prasugrel) responded to α,β met ATP (Figure 7A). Further analysis revealed that the inhibition of vasoconstriction by prasugrel was dose- and time-dependent (Figure 7B, C), reaching a maximum 2 to 5 hours after the 3rd oral gavage, then gradually returning to normal within 48 hours. This time-dependent inhibitory activity was not observed after a single oral administration (data not shown). Since platelets can influence endothelium-dependent vasodilatation via secretion of superoxide anions (Krotz et al., 2004), we next studied the effects of prasugrel on vasoconstriction induced by α,β met ATP following platelet depletion in P2Y₁₂^{-/-} mice (mean platelet count 29.16 \pm 2.1 K/ μ l). Under these conditions, prasugrel treatment inhibited vasoconstriction indicating both a vascular P2Y₁₂- and platelet-independent effect (Figure 7D).

JPET#178574

Discussion

The present study aimed at determining whether in the mouse, all of the hemostatic effects of clopidogrel and prasugrel are attributed to P2Y₁₂ inhibition. Doses of clopidogrel, prasugrel and a direct acting reversible P2Y₁₂ inhibitor (elinogrel) were normalized to provide equivalent inhibition of thrombosis. Data indicated that: i) in WT mice, maximal doses of clopidogrel and prasugrel recapitulating the phenotype of P2Y₁₂^{-/-} mice on arterial thrombosis and platelet aggregation (LTA) and which lack activities on PT and aPTT were accompanied with more bleeding than that associated with P2Y₁₂ gene targeting. ii) the same doses increased bleeding in P2Y₁₂^{-/-} mice. iii) at all doses, the thienopyridines provided more bleeding than their elinogrel counterpart doses. In addition, studies of primary hemostasis and vascular tone in mesenteric veins indicated that the thienopyridines had effects than could be accounted for by P2Y₁₂ inhibition. Taken together, these data indicate that the thienopyridines have off-target effects in the vasculature of the mouse that directly contribute to bleeding.

While previous studies performed in rats and rabbits showed that clopidogrel produced an unexpectedly large amount of bleeding compared to the inhibition of platelet aggregation or thrombosis (Schumacher et al., 2007; Wong et al., 2007; Wong et al., 2009), the strategy reported herein allows evaluation for the first time of whether the thienopyridine effects on thrombosis and hemostasis are restricted to P2Y₁₂. The doses of thienopyridines normalized to achieve a similar inhibition of thrombosis as occurred as a consequence of P2Y₁₂ gene targeting

JPET#178574

clearly resulted in more bleeding. The data demonstrated that a dose of clopidogrel (1.5 mg/kg) that provided similar volume of blood loss as occurred in the P2Y₁₂^{-/-} mouse provided less inhibition of thrombosis, while the low dose of prasugrel (1 mg/kg) which was also associated with a sub-optimal inhibition of thrombosis lead to a greater volume of blood loss than the genetically engineered mice. This is particularly interesting if one extrapolates these murine doses to their human counterparts, as this would correspond to 105 mg and 70 mg doses in healthy volunteers, which are within a similar range of the chronic and loading dose utilized in human for clopidogrel and prasugrel, respectively. Finally, the increased blood loss induced by dosing P2Y₁₂-deficient animals with clopidogrel and prasugrel, clearly established that a portion of the bleeding induced by these drugs was due to an off-target effect.

Off-target effects resulting from administration of thienopyridines are not necessarily unexpected as this class of P2Y₁₂ inhibitors was not screened for its preferential selectivity for P2Y₁₂ over other possible targets and the selectivity of the active metabolites and possible roles of other “inactive” metabolites have not yet been fully characterized. For example, at the time of regulatory approval of clopidogrel, the molecular identity of the platelet target was unknown, although attributed to blockade of the platelet P2_T receptor, later identified as P2Y₁₂(Hollopeter et al., 2001). Similarly, it was later demonstrated that thienopyridines inhibit P2Y₁₂ through irreversible binding of a highly reactive thiol species generated as the active metabolite of the parent compound (Savi et al.,

JPET#178574

2000). In light of the highly reactive, transient nature of the intermediate, it is possible that it could react with other thiol species present on the surface of all cell types, as well as potentially modify plasma proteins in circulation. Indeed, although sparse, off-platelet effects of clopidogrel have been reported, with clopidogrel showing possible pro- (Waehre et al., 2006) and anti-inflammatory (Molero et al., 2005; Heitzer et al., 2006) as well as vasomodulatory activities (Yang and Fareed, 1997; Warnholtz et al., 2007). While clopidogrel effects on the vascular tone have been tentatively attributed to the inhibition of circulating platelets (Krotz et al., 2004; Giachini et al., 2009), endothelium P2Y₁₂ (Simon et al., 2002; Wihlborg et al., 2004; Shanker et al., 2006) and a direct modulation of NO bioavailability (Ziemianin et al., 1999; Heitzer et al., 2006; Warnholtz et al., 2008), it has also been suggested that parent compound, active and inactive metabolites of clopidogrel could act on endothelial cells (Ziemianin et al., 1999; Jakubowski et al., 2005; Warnholtz et al., 2008).

The present data indicate that both clopidogrel and prasugrel blocked vasoconstriction induced by α,β met ATP *in vivo* in mice with prasugrel showing the strongest inhibitory activity. Prasugrel effect was time- and dose-dependent, but also reversible (unlike its effects on platelet function, which is irreversible). In addition, this effect did not appear to involve the platelets nor the vascular P2Y₁₂ as the same results were obtained in P2Y₁₂-deficient mice rendered thrombocytopenic via an anti-GPIIb/IIIa antibody. Since the inhibition of vasoconstriction required multiple dosing cycles, this suggested possible up- or down-regulation of mediators of the vascular tone. A direct and sole effect on

JPET#178574

NO seems unlikely however, as thienopyridine treatment was associated with an immediate and localized inhibition of the vaso-constrictive effect mediated by α,β met ATP. Hence, future experiments will be required to precisely determine the mechanism(s) by which thienopyridines inhibit vasoconstriction.

As opposed to the thienopyridines, elinogrel use was associated with less bleeding, a phenomenon likely explained by the competitive, reversible nature of the compound. Our *ex vivo* aggregation data showed that elinogrel activity is affected by ADP concentrations as doses that fully blocked arterial occlusion *in vivo* abolished 1 μ M ADP-induced platelet aggregation but were ineffective at inhibiting the aggregatory activity of 10 μ M ADP *in vitro*. Various observations come together to substantiate localized areas of greatly varying ADP concentrations within the blood vessel and growing thrombus as a whole. Born and Kratzer reported that damaged cells in the severed vessel wall are the primary source of ADP and ATP (Born and Kratzer, 1984), thus creating an ADP concentration gradient across the blood vessel lumen in such a way that highest concentrations are found closest to the vessel wall, i.e. the site of hemostasis or initiation of arterial thrombosis (mural thrombus). Since ADP concentrations can exceed 5 μ M under low shear environment such as that encountered in veins, a greater competition between ADP and elinogrel is expected to occur (as shown in our aggregation study) and to reduce the effect of the reversible inhibitor on the activation level and pro-coagulant activity of the platelets (Leon et al., 2004; van der Meijden et al., 2005). In agreement with this theory, we found increased

JPET#178574

amount of platelets deposited at the wound of mesenteric veins of mice treated with elinogrel vs P2Y₁₂^{-/-} mice (Figure 6D). Conversely, lower amounts of ADP are expected to be released by platelet-platelet interactions under arterial shear rates. Moake and collaborators have shown that only 4-5 % (300-400 nM) of the ADP platelet content was released upon high shear stress-induced platelet aggregation in presence of large vWF multimers (Moake et al., 1988) and the mathematical model proposed by Folie and McIntire estimated the ADP concentration present in the vicinity of a thrombus forming at 1500s⁻¹ to be around 1 μM (Folie and McIntire, 1989). Consistent with these findings, we found that limited concentrations of elinogrel induced dethrombosis *in vivo* in mice and *in vitro* in human blood (Supplemental Figure 2A, B) and that ADP concentrations as low as 300 nM were sufficient to confer stability to aspirinated human arterial thrombi in a perfusion chamber assay (Supplemental Figure 2C). Finally, these results also indicate that the value of pharmacodynamic assays utilizing exogenous and non-physiological concentrations of ADP at predicting antithrombotic activity of antiplatelet drugs may not apply to competitive, reversible antagonists.

Until recently, it has been accepted dogma that higher levels of platelet inhibition lead to greater efficacy, but at the cost of increased bleeding. This was substantiated by data from the recent TRITON trial (Wiviott et al., 2007), where prasugrel, an irreversible thienopyridine which was dosed to provide greater levels of platelet inhibition than clopidogrel, demonstrated substantially greater

JPET#178574

clinical benefit, accompanied by significantly more bleeding. The observations described in the present study suggest that some of the additional bleeding observed with prasugrel may be due to off-target activity.

JPET#178574

Acknowledgments

We would like to thank Gail Su for her support and help for the *in vivo* thrombosis study.

JPET#178574

Authorship Contributions.

Conducted experiments: Patrick André, Francis DeGuzman, Helena Haberstock-Debic and Scott Mills

Performed data analysis: Patrick André and Francis DeGuzman

Contributed new reagents or analytic tools: Yvonne Pak, Mayuko Inagaki and Anjali Pandey

Participated in research design: Patrick Andre, Stanley Hollenbach, David R. Phillips and Pamela B. Conley

Wrote or contributed to the writing of the manuscript: Patrick Andre, Pamela B. Conley

JPET#178574

References

- (1996) A randomised, blinded, trial of clopidogrel versus aspirin in patients at risk of ischaemic events (CAPRIE). CAPRIE Steering Committee. *Lancet* **348**:1329-1339.
- Andre P, Delaney SM, LaRocca T, Vincent D, DeGuzman F, Jurek M, Koller B, Phillips DR and Conley PB (2003a) P2Y₁₂ regulates platelet adhesion/activation, thrombus growth, and thrombus stability in injured arteries. *J Clin Invest* **112**:398-406.
- Andre P, LaRocca T, Delaney SM, Lin PH, Vincent D, Sinha U, Conley PB and Phillips DR (2003b) Anticoagulants (thrombin inhibitors) and aspirin synergize with P2Y₁₂ receptor antagonism in thrombosis. *Circulation* **108**:2697-2703.
- Born GV and Kratzer MA (1984) Source and concentration of extracellular adenosine triphosphate during haemostasis in rats, rabbits and man. *J Physiol* **354**:419-429.
- Folie BJ and McIntire LV (1989) Mathematical analysis of mural thrombogenesis. Concentration profiles of platelet-activating agents and effects of viscous shear flow. *Biophys J* **56**:1121-1141.
- Foster CJ, Prosser DM, Agans JM, Zhai Y, Smith MD, Lachowicz JE, Zhang FL, Gustafson E, Monsma FJ, Jr., Wiekowski MT, Abbondanzo SJ, Cook DN, Bayne ML, Lira SA and Chintala MS (2001) Molecular identification and characterization of the platelet ADP receptor targeted by thienopyridine antithrombotic drugs. *J Clin Invest* **107**:1591-1598.
- Giachini FR, Osmond DA, Zhang S, Carneiro FS, Lima VV, Inscho EW, Webb RC and Tostes RC (2009) Clopidogrel, independent of vascular P2Y₁₂ receptor, improves the arterial function in small mesenteric arteries from Ang II-hypertensive rats. *Clin Sci (Lond)*.
- Heitzer T, Rudolph V, Schwedhelm E, Karstens M, Sydow K, Ortak M, Tschentscher P, Meinertz T, Boger R and Baldus S (2006) Clopidogrel improves systemic endothelial nitric oxide bioavailability in patients with coronary artery disease: evidence for antioxidant and antiinflammatory effects. *Arterioscler Thromb Vasc Biol* **26**:1648-1652.
- Hollopeter G, Jantzen HM, Vincent D, Li G, England L, Ramakrishnan V, Yang RB, Nurden P, Nurden A, Julius D and Conley PB (2001) Identification of the platelet ADP receptor targeted by antithrombotic drugs. *Nature* **409**:202-207.
- Husted S, Emanuelsson H, Heptinstall S, Sandset PM, Wickens M and Peters G (2006) Pharmacodynamics, pharmacokinetics, and safety of the oral reversible P2Y₁₂ antagonist AZD6140 with aspirin in patients with atherosclerosis: a double-blind comparison to clopidogrel with aspirin. *Eur Heart J* **27**:1038-1047.
- Jakubowski A, Chlopicki S, Olszanecki R, Jawien J, Lomnicka M, Dupin JP and Gryglewski RJ (2005) Endothelial action of thienopyridines and thienopyrimidinones in the isolated guinea pig heart. *Prostaglandins Leukot Essent Fatty Acids* **72**:139-145.
- Krotz F, Sohn HY and Pohl U (2004) Reactive oxygen species: players in the platelet game. *Arterioscler Thromb Vasc Biol* **24**:1988-1996.

JPET#178574

- Leon C, Alex M, Klocke A, Morgenstern E, Moosbauer C, Eckly A, Spannagl M, Gachet C and Engelmann B (2004) Platelet ADP receptors contribute to the initiation of intravascular coagulation. *Blood* **103**:594-600.
- Mega JL, Close SL, Wiviott SD, Shen L, Hockett RD, Brandt JT, Walker JR, Antman EM, Macias W, Braunwald E and Sabatine MS (2009) Cytochrome p-450 polymorphisms and response to clopidogrel. *N Engl J Med* **360**:354-362.
- Mehta SR and Van de Werf F (2009) CURRENT OASIS 7 Trial Results: A randomized comparison of a clopidogrel high loading and maintenance dose regimen versus standard dose and high versus low dose aspirin in 25,000 patients with acute coronary syndromes *ESC Congress 2009*.
- Mehta SR, Yusuf S, Peters RJ, Bertrand ME, Lewis BS, Natarajan MK, Malmberg K, Rupprecht H, Zhao F, Chrolavicius S, Copland I and Fox KA (2001) Effects of pretreatment with clopidogrel and aspirin followed by long-term therapy in patients undergoing percutaneous coronary intervention: the PCI-CURE study. *Lancet* **358**:527-533.
- Moake JL, Turner NA, Stathopoulos NA, Nolasco L and Hellums JD (1988) Shear-induced platelet aggregation can be mediated by vWF released from platelets, as well as by exogenous large or unusually large vWF multimers, requires adenosine diphosphate, and is resistant to aspirin. *Blood* **71**:1366-1374.
- Molero L, Lopez-Farre A, Mateos-Caceres PJ, Fernandez-Sanchez R, Luisa Maestro M, Silva J, Rodriguez E and Macaya C (2005) Effect of clopidogrel on the expression of inflammatory markers in rabbit ischemic coronary artery. *Br J Pharmacol* **146**:419-424.
- Rehmel JL, Eckstein JA, Farid NA, Heim JB, Kasper SC, Kurihara A, Wrighton SA and Ring BJ (2006) Interactions of two major metabolites of prasugrel, a thienopyridine antiplatelet agent, with the cytochromes P450. *Drug Metab Dispos* **34**:600-607.
- Savi P, Herbert JM, Pflieger AM, Dol F, Delebasse D, Combalbert J, Defreyn G and Maffrand JP (1992) Importance of hepatic metabolism in the antiaggregating activity of the thienopyridine clopidogrel. *Biochem Pharmacol* **44**:527-532.
- Savi P, Pereillo JM, Uzabiaga MF, Combalbert J, Picard C, Maffrand JP, Pascal M and Herbert JM (2000) Identification and biological activity of the active metabolite of clopidogrel. *Thromb Haemost* **84**:891-896.
- Schumacher WA, Bostwick JS, Ogletree ML, Stewart AB, Steinbacher TE, Hua J, Price LA, Wong PC and Rehffuss RP (2007) Biomarker optimization to track the antithrombotic and hemostatic effects of clopidogrel in rats. *J Pharmacol Exp Ther* **322**:369-377.
- Shanker G, Kontos JL, Eckman DM, Wesley-Farrington D and Sane DC (2006) Nicotine upregulates the expression of P2Y₁₂ on vascular cells and megakaryoblasts. *J Thromb Thrombolysis* **22**:213-220.
- Simon J, Filippov AK, Goransson S, Wong YH, Frelin C, Michel AD, Brown DA and Barnard EA (2002) Characterization and channel coupling of the P2Y₁₂ nucleotide receptor of brain capillary endothelial cells. *J Biol Chem* **277**:31390-31400.
- Srinivasan S, Mir F, Huang JS, Khasawneh FT, Lam SC and Le Breton GC (2009) The P2Y₁₂ antagonists, 2-methylthioadenosine 5'-monophosphate triethylammonium

JPET#178574

- salt and cangrelor (ARC69931MX), can inhibit human platelet aggregation through a Gi-independent increase in cAMP levels. *J Biol Chem* **284**:16108-16117.
- Storey RF, Wilcox RG and Heptinstall S (2002) Comparison of the pharmacodynamic effects of the platelet ADP receptor antagonists clopidogrel and AR-C69931MX in patients with ischaemic heart disease. *Platelets* **13**:407-413.
- Ueno M, Rao SV and Angiolillo DJ (2010) Elinogrel: pharmacological principles, preclinical and early phase clinical testing. *Future Cardiol* **6**:445-453.
- van der Meijden PE, Feijge MA, Giesen PL, Huijberts M, van Raak LP and Heemskerk JW (2005) Platelet P2Y₁₂ receptors enhance signalling towards procoagulant activity and thrombin generation. A study with healthy subjects and patients at thrombotic risk. *Thromb Haemost* **93**:1128-1136.
- van Gestel MA, Reitsma S, Slaaf DW, Heijnen VV, Feijge MA, Lindhout T, van Zandvoort MA, Elg M, Reneman RS, Heemskerk JW and Egbrink MG (2007) Both ADP and thrombin regulate arteriolar thrombus stabilization and embolization, but are not involved in initial hemostasis as induced by micropuncture. *Microcirculation* **14**:193-205.
- van Giezen JJ, Berntsson P, Zachrisson H and Bjorkman JA (2009) Comparison of ticagrelor and thienopyridine P2Y₁₂ binding characteristics and antithrombotic and bleeding effects in rat and dog models of thrombosis/hemostasis. *Thromb Res*.
- Waehre T, Damas JK, Pedersen TM, Gullestad L, Yndestad A, Andreassen AK, Froland SS, Semb AG, Hansteen V, Gjertsen E, Ueland T, Brosstad F, Solum NO and Aukrust P (2006) Clopidogrel increases expression of chemokines in peripheral blood mononuclear cells in patients with coronary artery disease: results of a double-blind placebo-controlled study. *J Thromb Haemost* **4**:2140-2147.
- Wang YX, Vincelette J, da Cunha V, Martin-McNulty B, Mallari C, Fitch RM, Alexander S, Islam I, Buckman BO, Yuan S, Post JM, Subramanyam B, Vergona R, Sullivan ME, Dole WP, Morser J and Bryant J (2007) A novel P2Y₁₂ adenosine diphosphate receptor antagonist that inhibits platelet aggregation and thrombus formation in rat and dog models. *Thromb Haemost* **97**:847-855.
- Warnholtz A, Ostad MA, Velich N, Trautmann C, Schinzel R, Walter U and Munzel T (2007) A single loading dose of clopidogrel causes dose-dependent improvement of endothelial dysfunction in patients with stable coronary artery disease: Results of a double-blind, randomized study. *Atherosclerosis*.
- Warnholtz A, Ostad MA, Velich N, Trautmann C, Schinzel R, Walter U and Munzel T (2008) A single loading dose of clopidogrel causes dose-dependent improvement of endothelial dysfunction in patients with stable coronary artery disease: results of a double-blind, randomized study. *Atherosclerosis* **196**:689-695.
- Wihlborg AK, Wang L, Braun OO, Eyjolfsson A, Gustafsson R, Gudbjartsson T and Erlinge D (2004) ADP receptor P2Y₁₂ is expressed in vascular smooth muscle cells and stimulates contraction in human blood vessels. *Arterioscler Thromb Vasc Biol* **24**:1810-1815.
- Wiviott SD, Braunwald E, McCabe CH, Montalescot G, Ruzyllo W, Gottlieb S, Neumann FJ, Ardissino D, De Servi S, Murphy SA, Riesmeyer J, Weerakkody G,

JPET#178574

- Gibson CM and Antman EM (2007) Prasugrel versus clopidogrel in patients with acute coronary syndromes. *N Engl J Med* **357**:2001-2015.
- Wong PC, Crain EJ, Watson CA, Hua J, Schumacher WA and Rehfuss R (2009) Clopidogrel versus prasugrel in rabbits. Effects on thrombosis, haemostasis, platelet function and response variability. *Thromb Haemost* **101**:108-115.
- Wong PC, Crain EJ, Watson CA, Jiang X, Hua J, Bostwick JS, Ogletree ML, Schumacher WA and Rehfuss R (2007) Platelet aggregometry and receptor binding to predict the magnitude of antithrombotic and bleeding time effects of clopidogrel in rabbits. *J Cardiovasc Pharmacol* **49**:316-324.
- Yang LH and Fareed J (1997) Vasomodulatory action of clopidogrel and ticlopidine. *Thromb Res* **86**:479-491.
- Yusuf S, Zhao F, Mehta SR, Chrolavicius S, Tognoni G and Fox KK (2001) Effects of clopidogrel in addition to aspirin in patients with acute coronary syndromes without ST-segment elevation. *N Engl J Med* **345**:494-502.
- Ziemianin B, Olszanecki R, Uracz W, Marcinkiewicz E and Gryglewski RJ (1999) Thienopyridines: effects on cultured endothelial cells. *J Physiol Pharmacol* **50**:597-604.

JPET#178574

Footnotes

Disclosure:

All co-authors are employees and shareholders of Portola Pharmaceuticals

To request reprints:

Pamela B. Conley, PhD

Portola Pharmaceuticals, Inc.

270 East Grand Avenue, South San Francisco, CA 94080.

Email: pconley@portola.com

JPET#178574

Legends for Figures

Figure 1:

A) Clopidogrel (1.5, 15 and 50 mg/kg), prasugrel (1, 3 and 10 mg/kg) and elinogrel (7.5, 20 and 60 mg/kg), were identified as providing similar levels of inhibition on thrombus stability (intermediate (**I**), high (**H**) and maximal (**M**), respectively). N = 5 to 18 per group. **P<0.01, ***P<0.0001 vs V.Ctl (vehicle control). All animals treated with the maximal (**M**) doses had patent arteries at the end of the observation period as did P2Y₁₂^{-/-} mice (2400 sec). **B)** Clopidogrel, prasugrel and elinogrel effects on thrombus growth: prasugrel and elinogrel (not clopidogrel) dose-dependently delayed time for appearance of first thrombus. *, p<0.05, prasugrel (H) dose vs P2Y₁₂^{-/-}; ***, p<0.0001, maximal clopidogrel dose vs P2Y₁₂^{-/-}. **C)** Representative profiles of platelet deposition in response to FeCl₃-induced injury in WT mice treated with the maximal doses of elinogrel, clopidogrel and prasugrel that prevented vascular occlusion throughout the 40 min observation period.

Figure 2:

A) Time to occlusion/PK relationship. Elinogrel significantly inhibited thrombus stability (vascular occlusion) at concentrations > 1 µg/ml *in vivo*. **B)** Percent inhibition of platelet aggregation by doses of antiplatelet agents providing maximum levels of inhibition of thrombosis. While clopidogrel and prasugrel activity on platelet aggregation were minimally affected by ADP concentration,

JPET#178574

elinogrel failed at inhibiting platelet aggregation induced by 10 μ M ADP while it maximally inhibited that induced by 1 μ M ADP.

Figure 3:

A) Aggregation measurements in PRP obtained from WT mice treated with 0.5% methylcellulose or the maximal doses of the three agents or P2Y₁₂^{-/-} mice in response to 10 and 5 μ g/ml collagen, 2.5 and 1 mM murine TRAP. Traces are representative of data obtained from two independent experiments (blood from six mice pooled for each experiment). V.Ctl, vehicle control (0.5% methylcellulose). Elinogrel (M), 60 mg/kg. Clopidogrel (M), 50 mg/kg. Prasugrel (M), 10 mg/kg. Prothrombin time (PT) **(B)** and aPTT **(C)** measurements in PPP from WT mice treated with 0.5% methylcellulose, intermediate (I), high (H) or maximal (M) doses of the three agents or from P2Y₁₂^{-/-} mice.

Figure 4:

Doses of clopidogrel, prasugrel and elinogrel providing equivalent antithrombotic activity (I, H and M, n = 10 animals per dose) differentially affect bleeding frequency. Solid lines indicate bleeding period, gap (white bars) period of cessation of blood loss. (WT + Vehicle control (V. Ctl), n = 30; P2Y₁₂^{-/-}, n = 19))

Figure 5:

A) Doses of clopidogrel, prasugrel and elinogrel providing equivalent antithrombotic activity differentially affect volume of blood loss. *, p<0.005 vs

JPET#178574

clopidogrel; ‡, $p < 0.005$ vs prasugrel; † $P < 0.0005$ vs $P2Y_{12}^{-/-}$; • $P < 0.05$ vs $P2Y_{12}^{-/-}$. **B)** Lower therapeutic index (ratio of the fold increase for time to occlusion vs V.Ctl. (vehicle control) and the fold increase in blood loss vs V.Ctl) associated with the use of thienopyridines. **C)** Effects of maximal doses of clopidogrel (C., $n = 10$), prasugrel (P., $n = 8$), elinogrel (E., $n = 10$) and methylcellulose (MC., $n = 9$) on blood loss measurement in $P2Y_{12}^{-/-}$ mice ($n = 19$).

Figure 6:

Differential effects of maximal doses of elinogrel (E., $n = 8$), clopidogrel (C., $n = 8$) and prasugrel (P., $n = 9$) vs vehicle control ($n = 11$) and genetic targeting ($n = 7$) on bleeding time frequency in the micropuncture model applied to mesenteric veins. **A)** Schematic of platelet deposition at site of micropuncture in mesenteric veins. **B)** Bleeding frequency. **C)** Reduction in micropuncture lumen of WT-treated animals or $P2Y_{12}^{-/-}$ mice. Thienopyridine-treated mice have a delayed occlusion of the vascular wound compared with $P2Y_{12}^{-/-}$ mice. Elinogrel-treated animals displayed a faster rate of closure than either thienopyridine-treated or $P2Y_{12}^{-/-}$ mice that paralleled an increased amount of platelet deposition **(D)**.

Figure 7:

Thienopyridines block vasoconstriction of mesenteric veins. **A)** Vasoconstriction of mesenteric veins induced by $1 \mu\text{M}$ α, β metATP is inhibited by 3 days (D3) oral gavage with the maximal doses of clopidogrel ($n = 5$) and prasugrel ($n = 7$) but not elinogrel ($n = 9$), Vehicle control ($n = 11$) of $P2Y_{12}$ -deficiency ($n = 10$). **B)**

JPET#178574

Prasugrel dose response on α,β metATP-induced vasoconstriction (I, n = 9; H, n = 9; M, n = 4). **C)** Time-dependent effects of prasugrel (M, 10 mg/kg) on vasoconstriction 1 (n = 4), 2 (n = 4), 5 (n = 4), 10 (n = 7), 24 (n = 10) and 48 hours (n = 10) following administration of the third dose. **D)** Prasugrel blocks α,β metATP-induced vasoconstriction of mesenteric veins of P2Y₁₂ knockout mice which have been rendered thrombocytopenic.

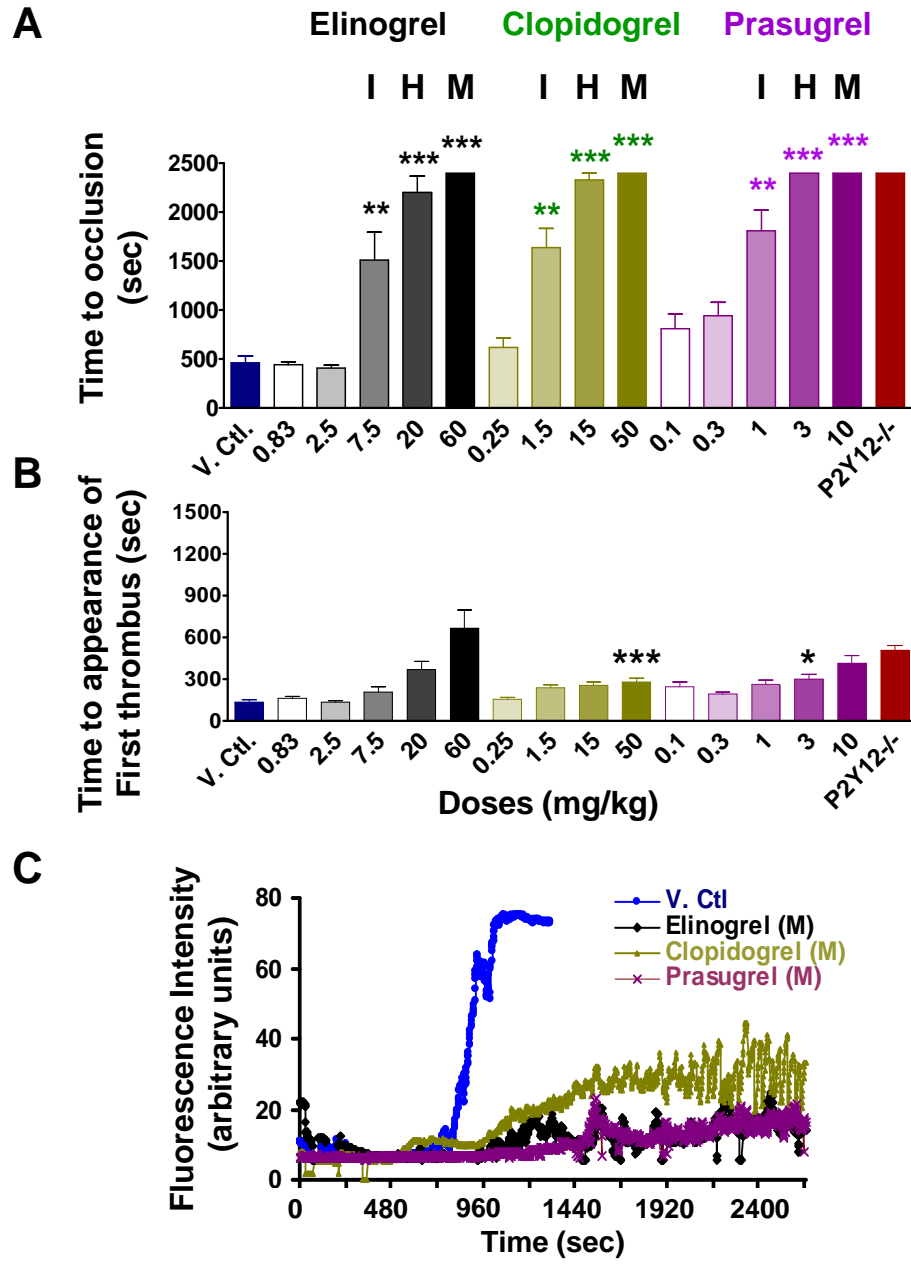


Figure 1

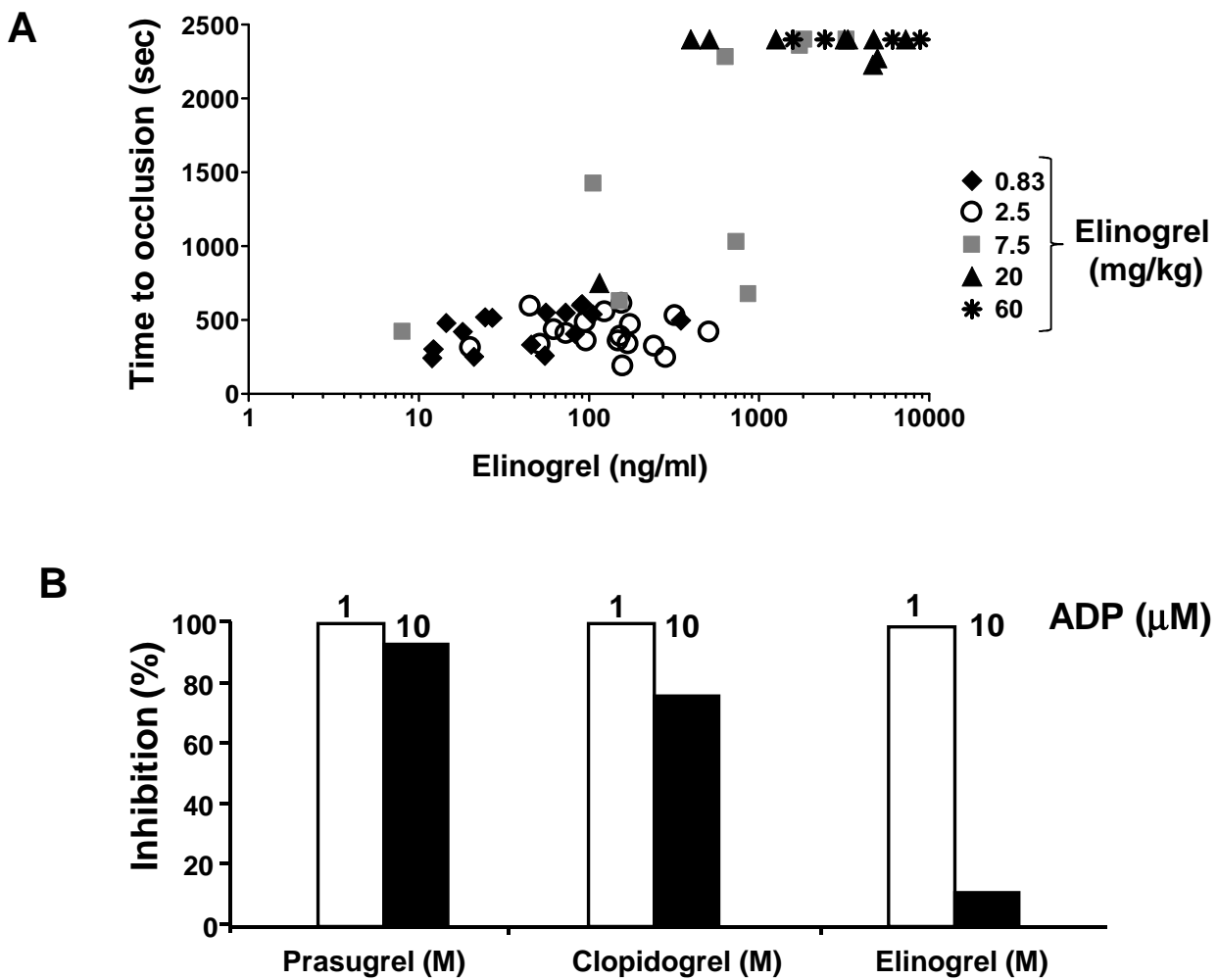


Figure 2

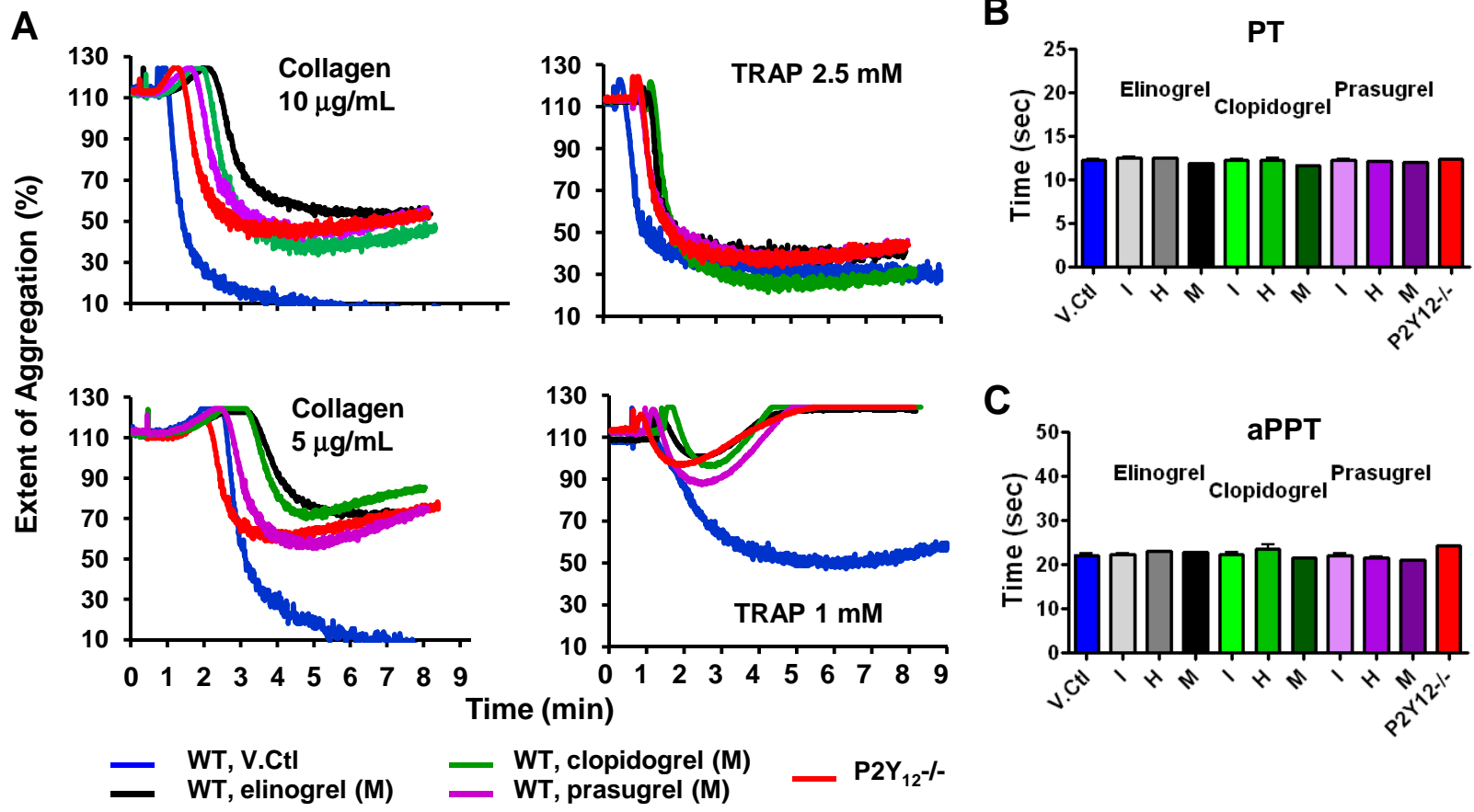


Figure 3

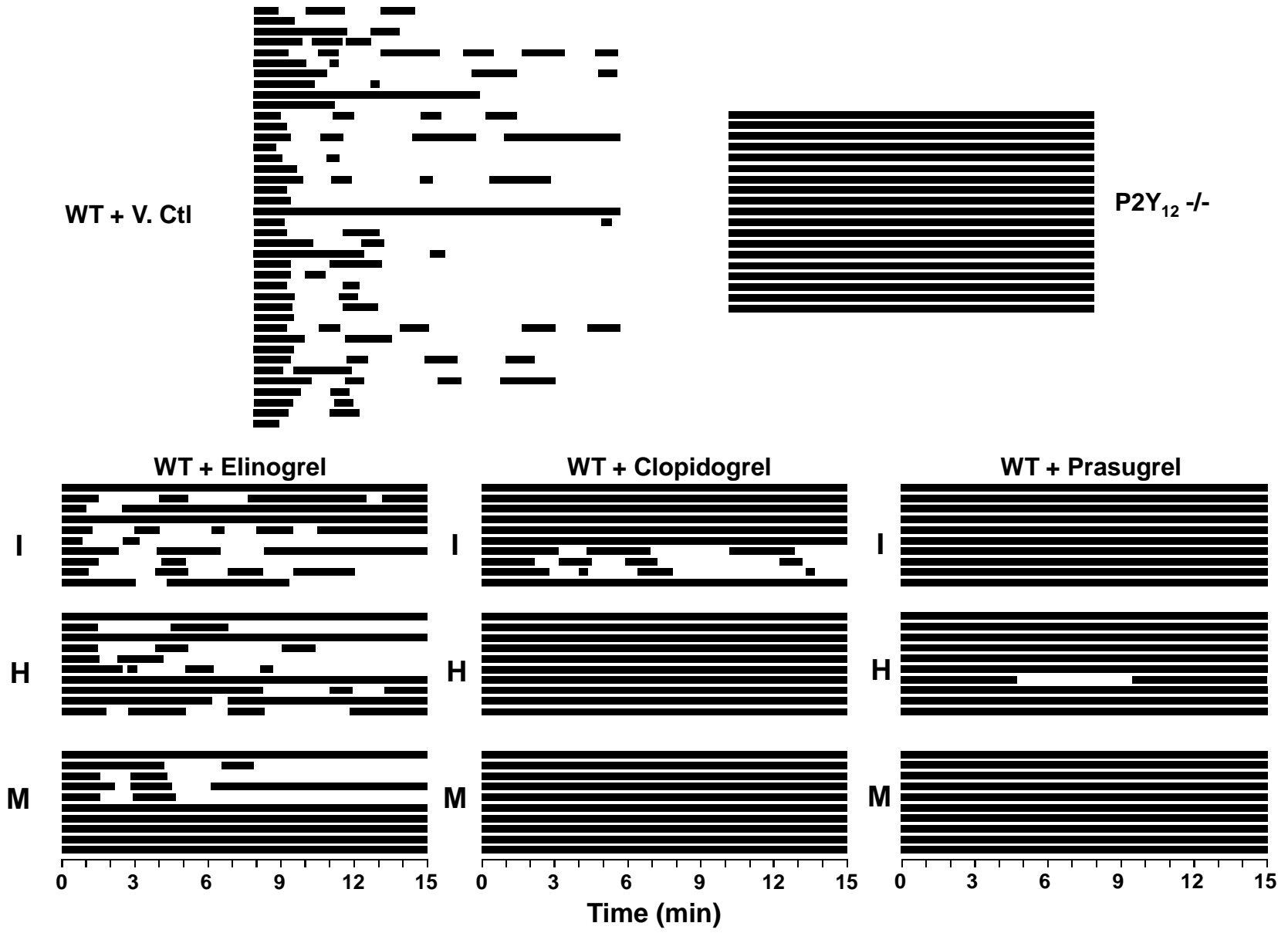


Figure 4

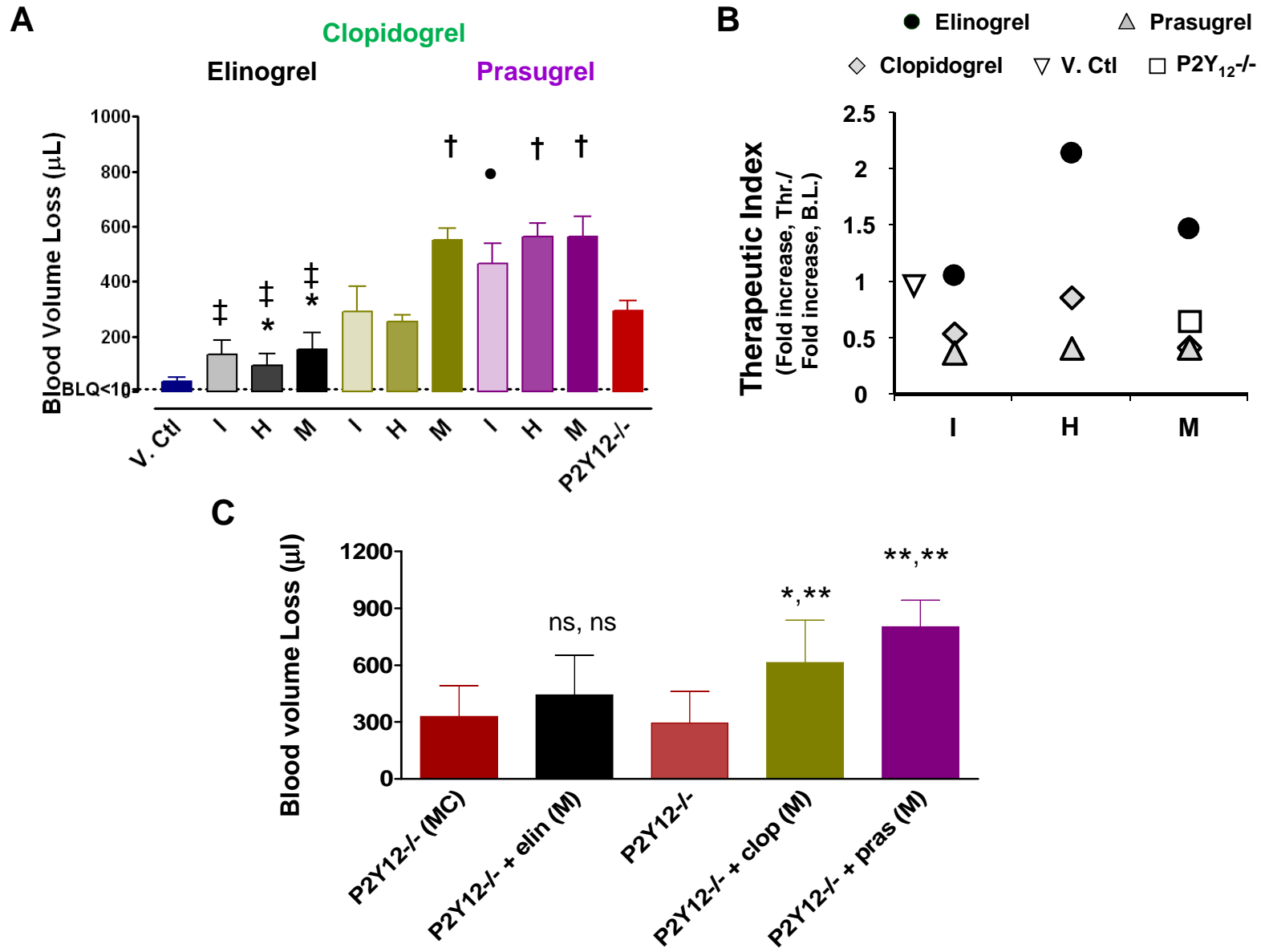


Figure 5

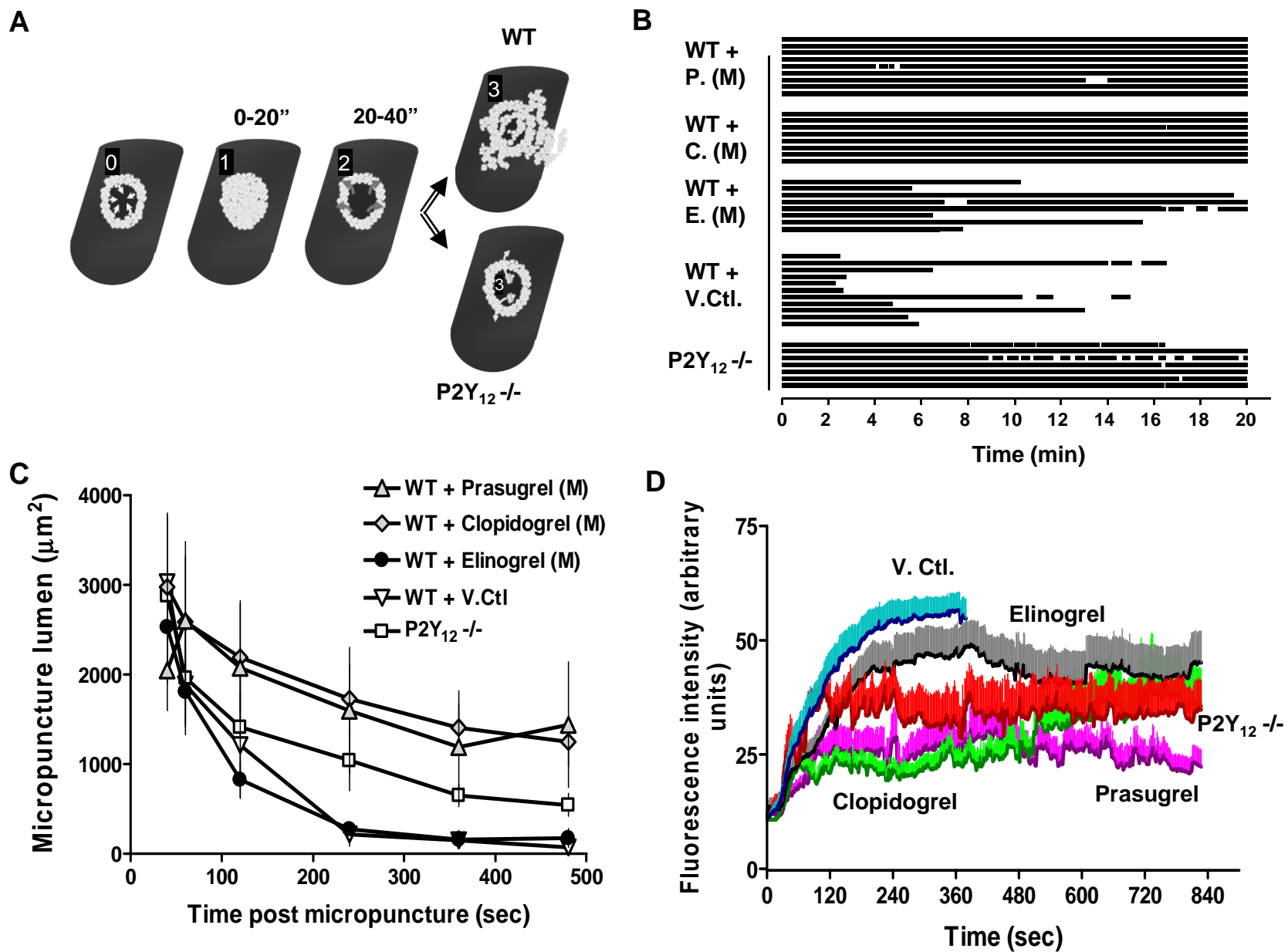


Figure 6

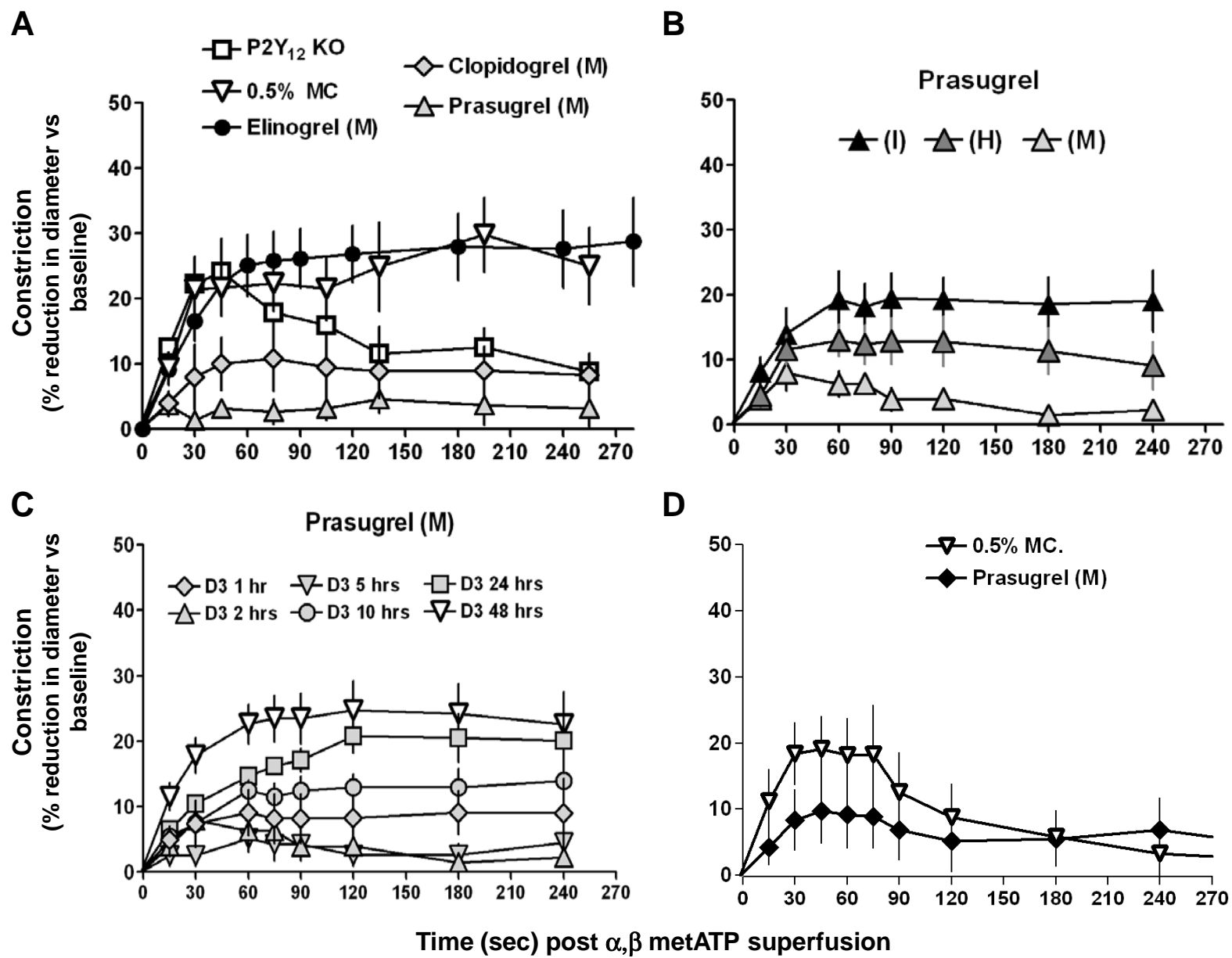


Figure 7