

The top ranking journal in the field...

Pharmacological

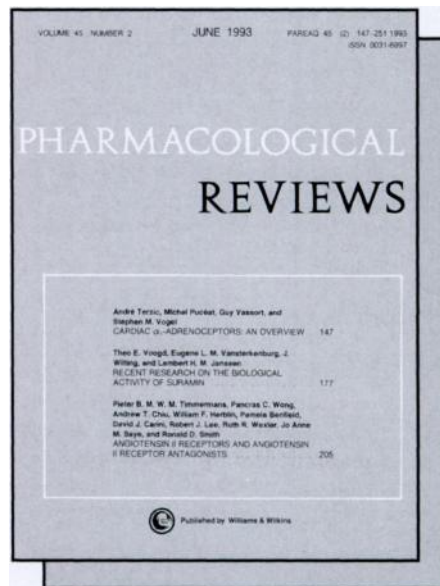
A Publication of the American Society for
Pharmacology and Experimental Therapeutics, Inc.

REVIEWS

Robert E. Stitzel, PhD, Editor
West Virginia University Medical Center

Pharmacological Reviews is a show-case for important review articles in your field, featuring more comprehensive papers on topics of high current interest.

The Journal continues to publish the important, longer papers of interest to pharmacologists, physiologists, toxicologists, and biological chemists. No library serving the pharmacologist should be without a subscription.



Published Quarterly

❖
Discounts available to members on all ASPET publications.

Save 10% when ordering two
Save 15% when ordering three
Save 20% when ordering four



Please enter my subscription to **Pharmacological Reviews**.

- Individual \$60/year
 Institutional \$107/year
 In-training* \$45/year
(add \$15/year outside the U.S.; in Canada also add 7% GST)
 New Subscription Renewal
Subscribe for: 3 years 2 years 1 year

Name _____

Address _____

City/State/Zip _____

* Please indicate institution/status _____

Payment Options:

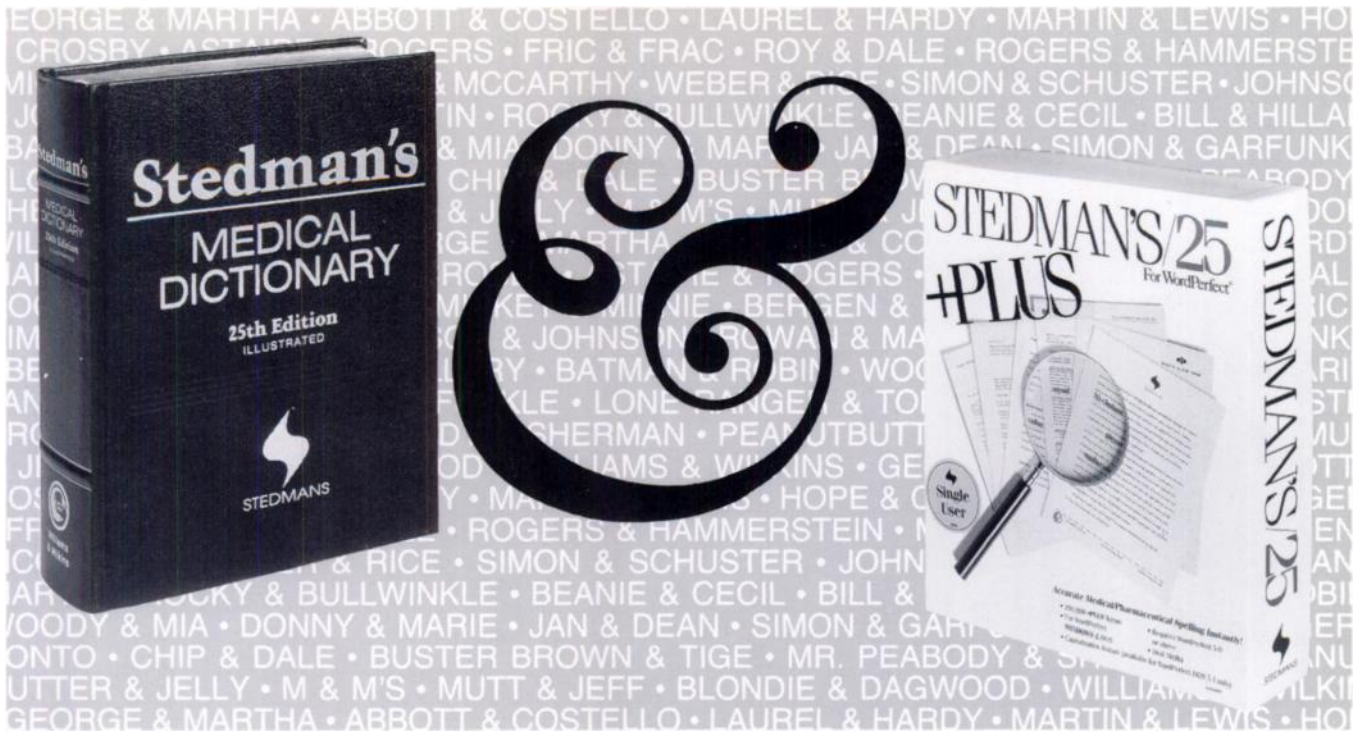
- Check enclosed (payable to Williams & Wilkins)
 Bill me American Express MasterCard VISA
Card # _____ Exp. date _____
Signature or P.O. # _____

MD and PA subscribers must add state sales tax. Subscriptions outside the U.S. must be prepaid in U.S. dollars. In Japan, contact Igaku-Shoin, MYW, Ltd. (03) 5689-5400. Rates valid through October 31, 1994.

Return coupon to:
Williams & Wilkins
A WAVERLY COMPANY

P.O. Box 23291, Baltimore, MD 21203-9990

Ⓢ For credit card orders, call TOLL FREE:
1-800-638-6423 in the U.S. or Canada.



STEDMAN & STEDMAN

Another Great American Team

Easy access format and the exclusive Subentry Locator!

Stedman's Medical Dictionary, 25th Edition

Stedman's/25 has an *index-like, single-entry format* in two columns of large, sharp print for quick scanning of the alphabetized entries. Plus the unique "dictionary within a dictionary"—the **Stedman's Subentry Locator**—for locating elusive multi-word (subentry) terms, as spoken or written, by their modifying words. What's more, only **Stedman's/25** includes:

- over 100,000 current terms
- 1,920 information-packed pages in an 8" x 10" format
- concise definitions with simplified phonetic spelling

1990/#7916-6/\$43.00



Order Toll-Free:
 Call 1-800-527-5597 or
 Fax 1-800-447-8438
 from anywhere in the US or Canada!

The ultimate medical/pharmaceutical spellchecker available for WordPerfect and now Microsoft Word—with 200,000 words!

STEDMAN'S/25 PLUS FOR WORDPERFECT and MICROSOFT WORD

STEDMAN'S/25 PLUS is your single source for medical/pharmaceutical spell checking with **WordPerfect** and **Microsoft Word**. Containing all the medical spell checking power of the popular STEDMAN'S/25, it includes 30,000 industry-standard trade and generic drug names.

STEDMAN'S/25 PLUS FOR WORDPERFECT and MS WORD—for TOTAL spellchecking and increased accuracy and personal productivity!

WordPerfect—Single-User Version
 —IBM version for 5.0 or later (#17556-4) \$99.00
 (also works under Windows 3.x)
 —MAC version for 2.02 (#17562-9) \$99.00

MS Word for Windows 2.0/above and MacWord 5.0/above (#17611-0) \$99.00

Starter Kit for up to 5 Users
 —IBM/Windows (#17577-7) \$345
 —MAC (#17582-3) \$345
 —MS Word (Windows/Mac) (#17612-9) \$345

STEDMANS
 The Best Words in Medicine



Williams & Wilkins

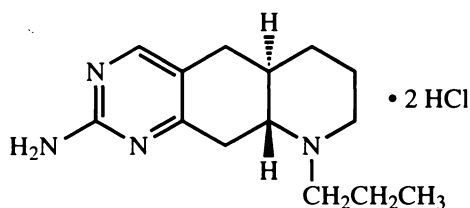
428 East Preston St. • Baltimore, MD 21202-3993

RBI THE RESEARCHER'S GOLD STANDARD

Quinelorane dihydrochloride

LY-163,502

NEW



Cat. No. Q-110

Exclusively available from RBI

D₂ Dopamine receptor agonist; potent analog of (-)-Quinpirole HCl, RBI Cat. No. Q-102

Cyclic ADP ribose

Metabolite of nicotinamide adenine dinucleotide (NAD⁺); potent intracellular Ca²⁺ releaser

Cat. No. C-201

Aequorin

Photoprotein isolated from the jellyfish *Aequorea*; Ca²⁺ indicator

Cat. No. A-205

Clozapine, normethyl-

Clozapine metabolite; potent 5-HT_{1C} serotonin receptor antagonist

Cat. No. C-202

Clozapine

Atypical neuroleptic agent; holds greater affinity for the dopamine D₄ receptor over dopamine D₂ or D₃ receptors

Cat. No. C-171

Kaliotoxin

Selectively blocks the neuronal high-conductance Ca²⁺-activated K⁺ channel (KCa)

Cat. No. K-106

Palytoxin

Potent Na⁺ channel activator that increases Na⁺ and Ca²⁺ entry into cells via a tetrodotoxin-resistant mechanism

Cat. No. P-180

MDL-12,330 hydrochloride

Adenylate cyclase inhibitor

Cat. No. M-182

Sepiapterin

Intracellularly converts to tetrahydrobiopterin, which leads to the stimulation of nitric oxide

Cat. No. S-154

Fax or write for our 1993-94 Catalog/Handbook, *Neurochemicals for the Neuroscientist*, listing 1,000 pharmacologically active compounds.

RBI RESEARCH BIOCHEMICALS INTERNATIONAL

One Strathmore Road, Natick, MA 01760-2447 USA
800-736-3690 • 508-651-8151 • Fax 508-655-1359

Local Distributors

Australia, Arncliffe • 2-597-5258
Denmark, Roedovre • 44-948822
France, Illkirch • 88-67-14-14
Germany, Köln • 221-497-2034

Israel, Jerusalem • 2-619940
Italy, Milano • 02-509-7720
Japan, Tokyo • 03-5684-1622
Korea, Seoul • 2-945-2431

Norway, Oslo • 22-220411
South Africa, Port Elizabeth • 41-4841
Switzerland, Zurich • 01-312-2124
Taiwan, Taipei • 2-918-1206
United Kingdom, St. Albans • 0727-8-41414