

VOLUME 263 • NUMBER 1 • OCTOBER 1992

JPETAB 263 (1) 1-412 (1992)

ISSN 0022-3565

MARIE SMITH SCHWARTZ MEDICAL LIBRARY
BROOKDALE HOSPITAL MEDICAL CENTER

NOV 03 1992

The Journal of

PHARMACOLOGY

AND EXPERIMENTAL THERAPEUTICS

*A Publication of The American Society
for Pharmacology and Experimental Therapeutics
Founded by John J. Abel—1909*

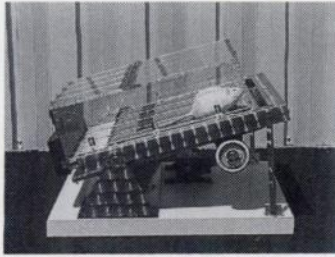
Edited for the Society by John A. Harvey



Published by Williams & Wilkins

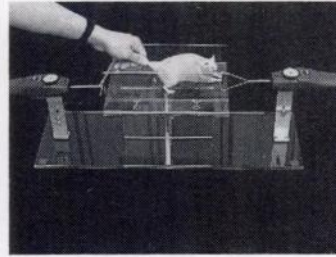
LAB ANIMAL RESEARCH EQUIPMENT

INEXPENSIVE EXERCISER



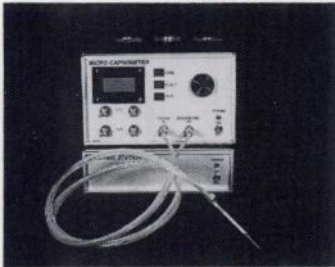
- * For rats and mice -- 4-lane exerciser.
- * Electronically controlled speed.
- * Electric stimulation grids.

GRIP STRENGTH METER for rats and mice



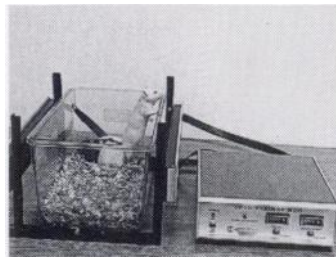
- * Objectively measures animal deficiency in strength.

END TIDAL CO₂ METER



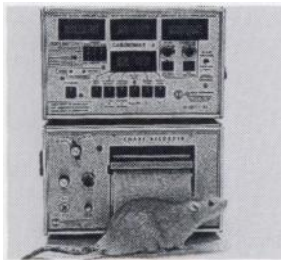
- * Can be used for Rats
- * Extremely small air sample flow -- 5ml/min.
- * Analog output to most recorders.
- * Digital display N₂O measurements.

INEXPENSIVE ANIMAL ACTIVITY METERS



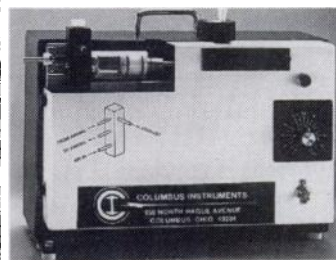
- * "Mini" activity meter uses standard plastic cages.
- * Can be used with rats or mice.
- * 15 Infrared sensors.
- * Separates ambulatory from total activity.
- * Multi-cage system available w/ IBM-PC interface.

CARDIAC OUTPUT FOR RATS



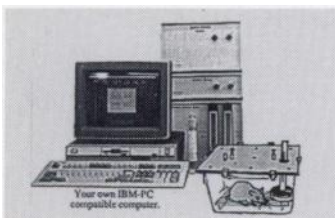
- * Thermodilution method using 1/3 mm temp. microprobes.
- * Can be interfaced to an IBM-PC.
- * Measures: CO, S.V. BP, Mean Transit Time, Ejection Fraction and much more.

VENTILATORS



- * Mechanical (piston) positive pressure ventilators for rodents and larger animals.

ECONOMICAL O₂/CO₂ METABOLIC SYSTEM



Your own IBM-PC compatible computer.

- * O₂ Consumption/CO₂ production computer (IBM-PC).
- * Open-circuit indirect calorimeter.
- * Completely computerized.
- * Single channel.
- * Also available-multi-channel

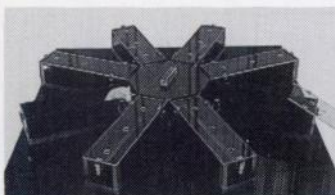
256 POINT THERMOMETER



FDA registered for human use

- * Interface to IBM-PC for 1 to 256 thermocouples.
- * Variety of temp. probes (rectal, skin, implantable).
- * Software provides graphics and real-time plotting.
- * Also special software for Pyrogenic Activity studies.

MAZES -- "FIGURE 8" AND "RADIAL ARM"



- * Computerized system with universal maze software (for IBM-PC) monitors interruption of 128 IR sensors.
- * Data LOTUS 1-2-3 compatible.

VIDEO TRACKERS FOR WATER MAZES



- * Measures activity, distance traveled, pattern of movement, & rotations of multi-animals w/ 1 TV camera.
- * Vertical activity (3-D) measurements w/ 2 cameras.
- * Ideal for water maze, human and animal gait analysis.

For our complete catalog please contact: **Columbus Instruments International Corp.**

P.O. Box 44049 Columbus, Ohio 43204 USA

PH: (614) 488-6176 FAX: (614) 276-0529 TLX: 246514 Toll Free: 1-800-669-5011



COPYRIGHT © 1992 BY THE AMERICAN SOCIETY FOR PHARMACOLOGY AND EXPERIMENTAL THERAPEUTICS