

Broad coverage of pharmacology  
in a prestigious journal

## THE JOURNAL OF PHARMACOLOGY AND EXPERIMENTAL THERAPEUTICS

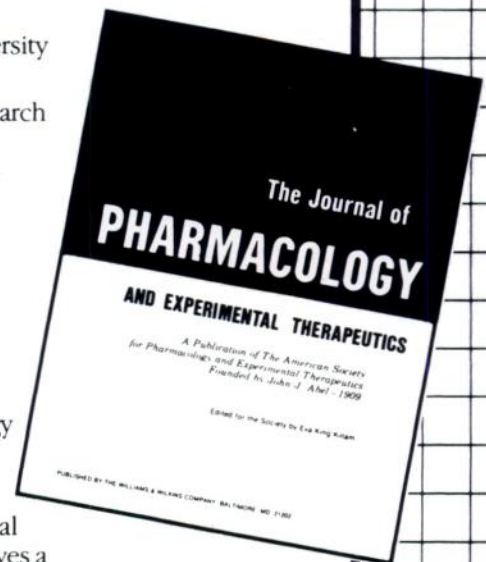
Editor: **Eva King Killam, PhD**, School of Medicine, University of California, Davis

**JPET** is respected the world over as one of the leading research journals in the field of pharmacology. Readers find broad coverage of all aspects of the interactions of chemicals with biological systems, including:

- autonomic pharmacology
- analgesia
- behavioral pharmacology
- cardiovascular pharmacology
- cellular pharmacology
- chemotherapy
- clinical pharmacology
- developmental pharmacology
- drug abuse
- drug metabolism & disposition
- gastrointestinal pharmacology
- immunopharmacology
- neuropharmacology
- pulmonary pharmacology
- renal pharmacology
- toxicology

**JPET** is valuable reading for academic, industrial and clinical pharmacologists as well as toxicologists. The Journal deserves a place in every pharmaceutical and toxicological research laboratory and pharmacology/toxicology department throughout the world.

**Monthly**



**YES!** Enter my subscription:

Avoid future rate increases and ensure uninterrupted service—enter your multiyear subscription today!

**The Journal of Pharmacology and Experimental Therapeutics** (monthly)

- Individual: \$170/yr    Institutions: \$285/yr  
(Please add \$65 outside the U.S.; in Canada, also add 7% GST.)  
 New Subscription    Renewal    3 yrs    2 yrs    1 yr

name \_\_\_\_\_

address \_\_\_\_\_

city state zip \_\_\_\_\_

Payment options:

- Check enclosed    Bill me  
 VISA    MasterCard    American Express

card # \_\_\_\_\_

signature/P.O.# \_\_\_\_\_

MD residents, please add 5% sales tax. Subscriptions from outside the US and Canada must be prepaid, in US dollars only. Rates valid for orders received before October 31, 1991.

Please allow 10 weeks for delivery of your first issue. Surface mail delivery to countries outside the US may take up to 16 weeks. Airmail rates available upon request.

**Williams & Wilkins**

PT 52772

P.O. Box 23291  
Baltimore, Maryland 21203-9990

Broadway House  
2-6 Fulham Broadway  
London SW6 1AA England

J1020S01



## NOTICE TO CONTRIBUTORS

Complete instructions for the preparation of manuscripts appear in the first issue of each volume, or copies may be obtained from the editor. Beginning October 1, 1991, all new manuscripts and correspondence concerning them should be sent to the incoming editor:

**Dr. John A. Harvey**  
**The Journal of Pharmacology & Experimental Therapeutics**  
**Suite 129**  
**The Medical College of Pennsylvania at EPPI**  
**3200 Henry Avenue**  
**Philadelphia, PA 19129**

Correspondence regarding previously submitted manuscripts should continue to be addressed to Dr. Eva King Killam or to the assigned Specific Field Editor.

---

## INFORMATION TO SUBSCRIBERS

THE JOURNAL OF PHARMACOLOGY AND EXPERIMENTAL THERAPEUTICS is issued monthly. Four volumes are published each year. Each volume contains three numbers.

*Correspondence concerning business matters* should be addressed to Williams & Wilkins, 428 East Preston St., Baltimore, MD 21202-3993 U.S.A.

*Annual Subscription Rates*—U. S. A. AND POSSESSIONS: personal, \$170.00; institutional, \$285.00; single copy, \$18.00. FOREIGN: personal, \$235.00; institutional, \$350.00; single copy, \$22.00. (Prices subject to change.) Institutional (multiple reader) rate applies to libraries, schools, hospitals, clinics, group practices, and federal, commercial, and private institutions and organizations. Foreign subscribers who wish to have issues sent by airmail may inquire of the publisher for the additional cost. The GST Tax Number for Canadian subscribers is 123394371.

*Change of address:* Publisher must be notified 60 days in advance. Journals undeliverable because of incorrect address will be destroyed. Duplicates can be obtained (if available) from the publisher at the regular price of single issues.

*New subscriptions and renewals* are entered to begin with the January or July issue.

To avoid a break in your series, subscriptions should be renewed promptly. The publisher cannot guarantee to supply back issues on belated renewals.

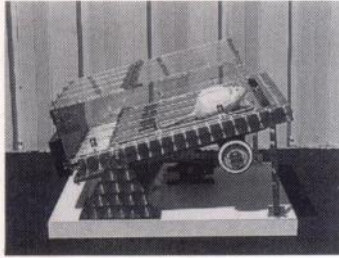
*Reprints* of individual articles are available *only* from authors.

*Microfilm.* For availability, inquire of Williams & Wilkins.

**WILLIAMS & WILKINS**  
**BALTIMORE, MD 21202-3993 U.S.A.**

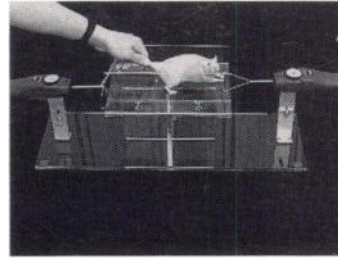
# LAB ANIMAL RESEARCH EQUIPMENT

## INEXPENSIVE EXERCISER



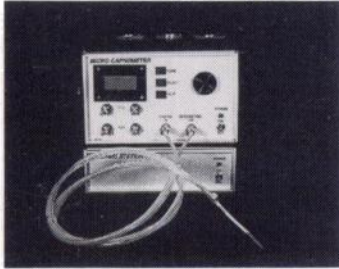
- \* For rats and mice -- 4-lane exerciser.
- \* Electronically controlled speed.
- \* Electric stimulation grids.

## GRIP STRENGTH METER for rats and mice



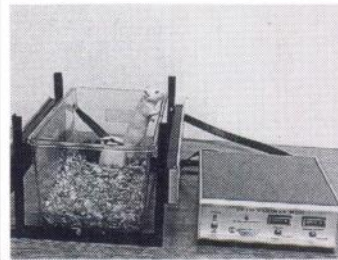
- \* Objectively measures animal deficiency in strength.

## END TIDAL CO<sub>2</sub> METER



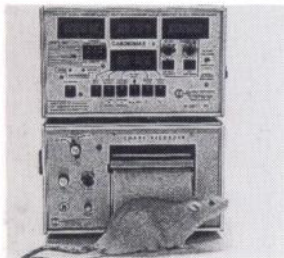
- \* Can be used for Rats
- \* Extremely small air sample flow -- 5ml/min.
- \* Analog output to most recorders.
- \* Digital display N<sub>2</sub>O measurements.

## INEXPENSIVE ANIMAL ACTIVITY METERS



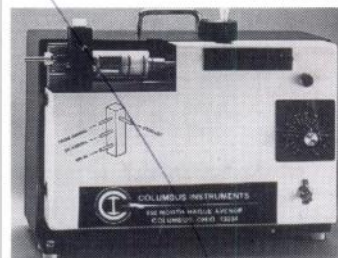
- \* "Mini" activity meter uses standard plastic cages.
- \* Can be used with rats or mice.
- \* 15 Infrared sensors.
- \* Separates ambulatory from total activity.
- \* Multi-cage system available w/ IBM-PC interface.

## CARDIAC OUTPUT FOR RATS



- \* Thermodilution method using 1/3 mm temp. microprobes.
- \* Can be interfaced to an IBM-PC.
- \* Measures: CO, S.V. BP, Mean Transit Time, Ejection Fraction and much more.

## VENTILATORS



- \* Mechanical (piston) positive pressure ventilators for rodents and larger animals.

## ECONOMICAL O<sub>2</sub>/CO<sub>2</sub> METABOLIC SYSTEM



Your own IBM-PC compatible computer.

- \* O<sub>2</sub> Consumption/CO<sub>2</sub> production computer (IBM-PC).
- \* Open-circuit indirect calorimeter.
- \* Completely computerized.
- \* Single channel.
- \* Also available-multi-channel

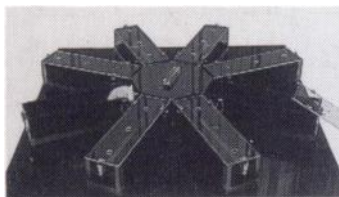
## 256 POINT THERMOMETER



*FDA registered for human use*

- \* Interface to IBM-PC for 1 to 256 thermocouples.
- \* Variety of temp. probes (rectal, skin, implantable).
- \* Software provides graphics and real-time plotting.
- \* Also special software for Pyrogenic Activity studies.

## MAZES -- "FIGURE 8" AND "RADIAL ARM"



- \* Computerized system with universal maze software (for IBM-PC) monitors interruption of 128 IR sensors.
- \* Data LOTUS 1-2-3 compatible.

## VIDEO TRACKERS FOR WATER MAZES



- \* Measures activity, distance traveled, pattern of movement, & rotations of multiple animals w/ 1 TV camera.
- \* Vertical activity (3-D) measurements w/ 2 cameras.
- \* Ideal for water maze, human and animal gait analysis.

For our complete catalog please contact: **Columbus Instruments International Corp.**

**P.O. Box 44049 Columbus, Ohio 43204 USA**

PH: (614) 488-6176 FAX: (614) 276-0529 TLX: 246514 Toll Free: 1-800-669-5011