

JPET #201954

Ethanol activation of PKA regulates GABA_A α 1 receptor function and trafficking in cultured cerebral cortical neurons

Stephen L. Carlson, Sandeep Kumar, David F. Werner*, Christopher E. Comerford, and

A. Leslie Morrow

Bowles Center for Alcohol Studies and Departments of Psychiatry, Pharmacology, University of North Carolina School of Medicine, Chapel Hill, NC 27599-717

JPET #201954

Running Title: PKA mitigates GABAergic adaptations to ethanol

Corresponding Author:

A. Leslie Morrow, Ph.D.

Bowles Center for Alcohol Studies

UNC School of Medicine

3027 Thurston- Bowles Building

CB # 7178

Chapel Hill, NC 27599

Tel: 919 966-7682 / Fax: 919 966-9099

Email: morrow@med.unc.edu

Number of:

Text pages: 22

Tables: 2

Figures: 6

References: 34

Abstract words: 217

Introduction words: 489

Discussion words: 1240

Nonstandard Abbreviations:

Rp-cAMP – Rp-adenosine 3',5'-cyclic monophosphothioate triethylamine

Sp-cAMP – Sp-adenosine 3',5'-cyclic monophosphothioate triethylamine

CalC – Calphostin-C

Recommended Section Assignment: Neuropharmacology

JPET #201954

Abstract

Ethanol exposure produces alterations in GABAergic signaling that are associated with dependence and withdrawal. Previously, we demonstrated that ethanol-induced protein kinase C γ (PKC γ) signaling selectively contributes to changes in GABA $_A$ α 1 synaptic receptor activity and surface expression. Here, we demonstrate that protein kinase A (PKA) exerts opposing effects on GABA $_A$ receptor adaptations during brief ethanol exposure. Cerebral cortical neurons from day 0-1 rat pups were tested after 18 days in culture. Receptor trafficking was assessed by western blot analysis and functional changes were measured using whole cell patch clamp recordings of evoked and mIPSC responses. One-hour ethanol exposure increased membrane-associated PKC and PKA, but steady-state GABA $_A$ α 1 subunit levels were maintained. Activation of PKA by Sp-cAMP alone increased GABA $_A$ α 1 subunit surface expression and zolpidem potentiation of GABA responses, while co-exposure of ethanol with the PKA inhibitor Rp-cAMP decreased α 1 subunit expression and zolpidem responses. Exposure to the PKC inhibitor calphostin-C with ethanol mimicked the effect of direct PKA activation. The effects of PKA modulation on mIPSC decay τ were consistent with its effects on GABA currents evoked in the presence of zolpidem. Overall, the results suggest that PKA acts in opposition to PKC on α 1-containing GABA $_A$ receptors, mediating the GABAergic effects of ethanol exposure, and may provide an important target for the treatment of alcohol dependence/withdrawal.

JPET #201954

Introduction

Ethanol elicits a number of adaptations in GABAergic signaling following both acute and chronic exposure. Evidence suggests acute ethanol intoxication increases overall GABAergic inhibition, while chronic ethanol leads to deficits in GABA functioning (reviewed in (Kumar et al., 2004; Kumar et al., 2009). Numerous studies suggest the major changes associated with GABAergic deficits following chronic ethanol exposure include a decrease in surface expression of GABA_A receptor α 1 subunits both in the cerebral cortex (Devaud et al., 1997; Kumar et al., 2003) and hippocampus (Cagetti et al., 2003; Liang et al., 2004; Liang et al., 2006; Liang et al., 2007). Chronic ethanol exposure produces a withdrawal syndrome upon discontinuation of ethanol that is mimicked, in part, by genetic deletion of α 1 subunits in mice that were never exposed to ethanol. This suggests that the loss of GABA_A α 1 receptor surface expression is involved in tremor and enhanced seizure susceptibility associated with ethanol dependence (Kralic et al., 2002; Kralic et al., 2005). Additionally, similar alterations in GABA_A α 1 subunit levels are found in other disorders, including models of epilepsy and benzodiazepine tolerance (Chen et al., 1999; Zeng and Tietz, 1999; Gonzalez and Brooks-Kayal, 2011). Therefore, a better understanding of GABA_A receptor regulation following ethanol exposure may provide both valuable insight into the general mechanism of GABA_A receptor regulation, as well as potential therapeutic targets for pathologies linked to these disorders.

Recently, we and others have shown that GABA_A receptor adaptations to ethanol are recapitulated *in vitro* following a brief ethanol exposure in cultured cortical and hippocampal neurons (Kumar et al., 2010; Shen et al., 2011; Werner et al., 2011). The effect of ethanol is dependent upon the selective activation of PKC γ to induce the internalization of GABA_A α 1 subunits (Kumar et al., 2010), consistent with the ability of ethanol to activate PKC γ and reduce GABA_A α 1 subunit surface expression *in vivo*. However, there is a mismatch between the time dependent effects of ethanol on PKC γ and GABA_A α 1 receptors, suggesting the involvement of other mechanisms (Kumar et al., 2010).

JPET #201954

Ethanol has long been known to directly activate PKA (Dohrman et al., 1996). *In vivo* studies implicate PKA as playing a role in the behavioral effects of ethanol (Thiele et al., 2000; Pandey et al., 2003; Lai et al., 2007). Additionally, PKA has been shown to directly phosphorylate and modulate GABA_A receptor activity (Ives et al., 2002; Brandon et al., 2003). Recently, we found that ethanol dose- and time-dependently increased PKA membrane levels in rat cerebral cortex, which corresponded to increased GABA_A α 1 subunit expression (Kumar et al., 2012). The precise physiological consequences of ethanol regulation of GABAergic inhibition via PKA, however, are unclear. As recent studies from our lab suggest both PKC and PKA activation may influence GABA_A receptor activity during ethanol exposure, we investigated the dualistic role of PKA and PKC in modulating the actions of ethanol on GABA_A receptor α 1 subunit expression and function in cortical cultured neurons.

JPET #201954

Materials and Methods

Cultured Cerebral Cortical Neurons

All experiments were conducted in accordance with guidelines from the National Institutes of Health and Institutional Animal Care and Use Committee at the University of North Carolina. Cultured cerebral cortical neurons were isolated as described elsewhere (Kumar et al., 2010). Briefly, mixed sex rat pups from Sprague–Dawley breeding pairs (Harlan, Indianapolis, IN, USA) were decapitated on postnatal day 0–1. Brains were rapidly dissected and the cerebral cortices were isolated. Cortical halves were minced into fine pieces and tissue was incubated in CO₂-independent media containing papain (50 U/mL, Worthington, Lakewood, NJ, USA), L-cysteine and DNase (both from Sigma, St. Louis, MO, USA) for 30 min at 37°C. Tissue pieces were gently washed followed by gentle trituration in Dulbecco's modified eagle's medium (DMEM, Gibco, Grand Island, NY) containing 10% horse serum, penicillin-streptomycin (Pen-Strep) and DNase. Cells used for biochemistry were plated onto poly-D-lysine–coated flasks, while cells used for electrophysiology were plated onto poly-D-lysine–coated cover slips in 12-well plates. Cells were maintained in a 5% CO₂ humidified incubator. After day 3, cells were fed with serum-free medium containing B27 and Pen-Strep (10 000 U/mL; final concentration 50 U per flask). Media was changed twice per week with no more than one-third of the media being removed during exchanges. For all experiments, Pen-Strep was removed from cultures on day 14 to prevent interactions with GABA_A receptors. Cultures were maintained for at least 17 days before conducting experiments, as prior studies determined that GABA_A receptor expression was stable between 15 and 19 days *in vitro*.

Ethanol and Drug Exposure

Cultured cells were exposed to 50 mM ethanol and placed in a plastic chamber within the incubator. A beaker of water with 50 mM ethanol was used to maintain stable ethanol concentrations in the chamber. Control cells were exposed to an equivalent amount of water and placed in a vapor chamber with a beaker containing water. Cells were exposed to ethanol for various times (0 – 60 min). To examine PKA involvement, the PKA activator Sp-adenosine 3',5'-cyclic monophosphothioate triethylamine (Sp-cAMP, 70μM) and PKA inhibitor Rp-adenosine 3',5'-cyclic monophosphothioate triethylamine (Rp-cAMP, 50μM) were added to the cell

JPET #201954

media. These doses were chosen based on previous studies (Zhang and Pandey, 2003). To examine PKC involvement, the PKC inhibitor calphostin C (CalC, 0.3 μ M in 0.1% dimethyl sulfoxide, final concentrations) was used as previously described (Kumar et al., 2010).

P2 Fractionation and Biotinylation

After experiments, the reactions were stopped by placing the flasks on ice. Cells were washed with cold phosphate-buffered saline (PBS), scraped, centrifuged at 1000 g for 18 min, and stored at -80°C until fractionation. Cell pellets were homogenized in 0.32M sucrose and centrifuged at 1000 g for 10 min. The supernatant was then centrifuged twice for 30 min at 12,000 g. The final pellet was resuspended in PBS. Protein concentrations for the isolated P2 fraction were made using the bicinchoninic acid protein assay kit (Thermo Fisher Scientific, Waltham, MA). Biotinylation experiments were performed as previously described (Kumar et al., 2010). Briefly, cells were washed twice with ice-cold PBS, followed by addition of sulfosuccinimidyl 2-(biotinamido)-ethyl-1,3-dithiopropionate diluted in PBS, and incubated for 30 min at 4°C. Unbound biotin was inactivated using a quenching solution. Cells were scraped and spun three times at 500g in Tris-buffered saline. Biotin-labeled (surface) and flow-through (cytosolic) proteins were separated using NeutrAvidin slurry. Biotinylated proteins were eluted from the beads by incubation for 60 min at 22°C in Laemmli SDS-PAGE sample buffer. Samples were then subjected to gel electrophoresis and western blotting.

Western Blot Analysis

GABA_A receptor α 1 subunits, PKA subunits and PKC isoforms were analyzed by western blotting as described elsewhere (Kumar et al., 2010). Protein samples were subjected to SDS-PAGE using Novex Tris-Glycine (8-16%) gels and transferred to PVDF membranes (Invitrogen, Carlsbad, CA). Membranes were probed with GABA_A receptor α 1 subunit (Millipore, Billerica, MA), PKA RII α , RII β , or PKC γ (BD Biosciences, Franklin Lakes, NJ) antibodies. Blots were then exposed to an antibody for β -actin for normalization. Proteins were detected with enhanced chemiluminescence (GE Healthcare, Amersham, UK). Membranes were exposed to film under non-saturating conditions. Densitometric analysis was conducted using NIH Image 1.57.

JPET #201954

Comparisons were made within blots and expressed as % averaged control values. Statistics were conducted using ANOVA or Student's t-test.

Electrophysiology

Whole-cell voltage clamp recordings were used to assess evoked currents and mIPSCs. Electrodes were pulled using a PP-830 (Narishige, Japan) and fire polished to a resistance of 2-3 MΩ. Intracellular solution contained 150 mM KCl, 3.1 mM MgCl₂, 15 mM HEPES, 5 mM KATP, 5 mM EGTA, and 15 mM phosphocreatine, adjusted to pH 7.4 with KOH, while extracellular solution contained 145 mM NaCl, 5 mM KCl, 10 mM HEPES, 2 mM CaCl₂, 1 mM MgCl₂, 5 mM sucrose, and 10 mM glucose, adjusted to pH 7.4 with NaOH. For mIPSC recordings the external solution also contained 6-cyno-7-nitroquinoxaline-2,3-dione (CNQX; 10 μM, Sigma), D-2-amino-5-phosphonopentanoic acid (AP-5; 40 μM, Tocris), and tetrodotoxin (TTX; 1 μM, Sigma). Membrane potential was held at -60 mV and currents were recorded with an Axopatch ID (Axon Instruments, Union City, CA, USA) amplifier. Data were collected using Clampex software (Axon Instruments). Drugs were diluted in the extracellular solution and applied using a U-tube apparatus. Zolpidem (100 nM) was co-applied with GABA (1 or 10 μM) to observe potentiation. Potentiation by zolpidem is expressed as the current in response to (GABA + zolpidem/GABA alone · 100). Dose-response curves were generated from GABA-evoked responses at 1 μM, 3 μM, 10 μM, 30 μM, 100 μM, and 1 mM GABA. Current amplitudes were normalized to the averaged control current response to 1 mM GABA and fit using GraphPad Prism software (San Diego, CA) with the sigmoidal dose-response equation:

$$Y = \text{min} + (\text{max} - \text{min}) / (1 + 10^{(\text{LogEC50} - X)})$$

Miniature inhibitory post-synaptic currents (mIPSCs) were analyzed using the mini-Analysis software (v5.6.4; Synaptosoft, Decatur, GA, USA). mIPSCs were recorded for a minimum of 3 min. Minimum threshold detection was set to 5 pA. Frequency and amplitude were determined using automatic detection of each recording. To assess mIPSC kinetics, the recording trace was visually inspected and only events with a stable baseline, sharp rising phase and single peak were used in order to negate artifacts due to event summation. Only recordings with a minimum of 25 events fitting these criteria were analyzed. Decay time constants were

JPET #201954

obtained by using a double exponential fit for the average of the mIPSCs in a single recording. Numerical data are presented as mean \pm SEM. Statistics were conducted using ANOVA or Student's t test.

Results

PKA activation by ethanol modulates GABA_A receptor trafficking and activity

Cultured cerebral cortical neurons were exposed to ethanol (50 mM) for 1 hr to test for its effects on membrane expression of GABA_A α 1 subunit and protein kinase levels (Fig. 1). Whereas 4 hr ethanol exposure produces a decrease in GABA_A α 1 levels (Kumar et al., 2010), no effects on this subunit are observed at the 1 hr time point (Fig. 1A). However, 1 hr ethanol exposure produced a significant increase in the abundance of both PKC γ (Fig. 1B, 78.1 ± 21.0 , $n=7$, $p<0.05$, Student's t test) and the PKA regulatory subunits RII α (Fig. 1C, 35.5 ± 12.7 , $n=6$, $p<0.05$, Student's t test) and RII β (Fig. 1D, 36.4 ± 11.1 , $n=6$, $p<0.05$, Student's t test) in the P2 fraction. Table 1 provides a comparison of the GABA_A α 1 and protein kinase trafficking changes induced by 1 hr and 4 hr ethanol exposure in cerebral cortical neurons. While GABA_A α 1 membrane levels are unchanged at 1 hr and decreased following 4 hr ethanol, PKC γ levels are elevated at both time points. Conversely, while PKA RII α and RII β are elevated at the 1 hr time point, PKA levels return to baseline after 4 hr ethanol (Table 1).

To determine the effects of ethanol that are mediated by PKA, GABA_A receptor subunit levels were assessed after either direct activation of PKA or ethanol exposure in the presence of a PKA inhibitor. Additionally, whole cell patch clamp recordings were used to measure functional changes in GABA_A receptor electrophysiological responses. GABA (1-1000 μ M) responses were first determined and then zolpidem (100 nM) enhancement of GABA (10 μ M) responses was used as a pharmacological indicator for altered synaptic GABA_A α 1 containing receptor activity (Liang et al., 2004; Kumar et al., 2010). Currents evoked by GABA alone were compared to currents evoked by co-application of GABA + zolpidem to measure percent potentiation.

Exposure to the PKA activator Sp-cAMP (50 μ M) for 1 hr produced a significant increase in GABA_A α 1 subunits relative to control values in the P2 fraction (Fig. 2A, 58.4 ± 13.7 , $n=7$, $p<0.05$, Student's t test), with a corresponding increase in surface biotinylated protein (Fig. 2B, 50.48 ± 18.45 , $n=5$, $p<0.05$, Student's t test) and decrease in the cytosolic fraction (Fig. 2C, 54.03 ± 10.74 , $n=5$, $p<0.05$, Student's t test). Sp-cAMP exposure had no effect on the EC₅₀ or amplitude of GABA-evoked responses (Fig. 2D) or whole cell GABA-

JPET #201954

evoked current amplitude at the dose used to test zolpidem enhancement of GABA responses (Fig. 2E). Sp-cAMP exposure did, however, increase zolpidem potentiation of GABA responses by $78.1 \pm 9.4\%$ (Fig. 2F-G; $n=6$ per group, Student's *t* test, $p<0.05$) compared to control cells. Currents evoked over the course of 1 hr during Sp-cAMP exposure revealed that direct PKA activation resulted in a rapid increase in potentiation by zolpidem that was sustained over the course of the hour ($n=4$, repeated measures ANOVA, $f=22.03$, $p<0.05$, significantly increased at $t=12-60$ min, Bonferroni post test, $p<0.05$), while current amplitude was stable for currents evoked under control conditions (Fig. 3).

While ethanol alone did not significantly alter GABA_A $\alpha 1$ levels after 1 hr, co-exposure of ethanol and the PKA inhibitor Rp-cAMP decreased GABA_A $\alpha 1$ membrane levels 33% (Fig. 4A, $n=4$, one-way ANOVA, $f=12.42$, $p<0.05$, Newman-Keuls post test, $p<0.05$). Ethanol, ethanol+Rp-cAMP, or Rp-cAMP exposure had no effect on the GABA dose-response (Fig. 4B) or GABA-evoked current amplitude (Fig. 4C). Reduced membrane levels of $\alpha 1$ subunits corresponded to reduced zolpidem potentiation of GABA responses in ethanol + Rp-cAMP exposed cells (Fig. 4D-E, $n=6-11$, one-way ANOVA, $f=4.031$, $p<0.05$, Newman-Keuls post test, $p<0.05$). Rp-cAMP exposure alone had no effect on GABA_A $\alpha 1$ subunit levels or zolpidem potentiation.

Inhibition of PKC in the presence of ethanol mimics direct PKA activation

As ethanol is known to activate PKC and inhibition of PKC prevents the GABAergic changes seen after 4 hr ethanol exposure (Kumar et al., 2010; Werner et al., 2011), P2 fractions levels of GABA_A subunits were measured following 1 hr ethanol exposure in the presence of the PKC inhibitor calphostin-C (0.3 μ M). Co-exposure of ethanol and calphostin C uncovered effects not normally observed at 1 hr. GABA_A $\alpha 1$ membrane levels were increased 56% (Fig. 5A, $n=6$, one-way ANOVA, $f=11.91$, $p<0.05$, Newman-Keuls post-hoc test, $p<0.05$).

The regulation of GABA_A receptor $\alpha 1$ subunit expression in the P2 fraction was corroborated by the effects of ethanol plus kinase inhibitors on GABA-evoked currents (compare Figs. 3 and 5B-C). Ethanol (50 mM) was applied via the extracellular solution at the start of the time course, while CalC or Rp-cAMP were in the patch pipette. Currents evoked by GABA and zolpidem over the course of 1 hr were compared to currents

JPET #201954

averaged for 10 min prior to drug exposure. Current amplitudes were stable prior to application of ethanol and kinase inhibitors (Fig. 5). Current amplitude was not significantly altered in the presence of ethanol alone (Fig. 5B-C). Co-application of ethanol + CalC, however, rapidly increased the current amplitude produced by GABA+ zolpidem, mimicking the results of direct PKA activation shown above (n=3, repeated measures ANOVA, $f=3.863$, significantly increased at $t=14-60$ min, Bonferroni post test, $p<0.05$). Conversely, co-application of ethanol + Rp-cAMP resulted in a rapid decrease in current amplitude that was also sustained for the duration of 1 hr (n=3, repeated measures ANOVA, $f=11.10$, significantly decreased at $t=8-60$ min, Bonferroni post test, $p<0.05$).

PKA activation by ethanol regulates zolpidem modulation of mIPSC decay τ_2

As ethanol exposure has been shown to alter mIPSC decay kinetics, which is related to changes in GABA_A receptor subunit expression (Liang et al., 2006; Fleming et al., 2009; Werner et al., 2011), recordings of mIPSCs were made to further investigate the functional consequences of ethanol activation of PKA on synaptic GABA_A receptor signaling. While there appeared to be a slight shift in the mIPSC decay kinetics suggestive of an altered synaptic GABA_A receptor expression profile, there was not a significant direct effect of 1 hr ethanol and/or PKA modulation on GABA mIPSC kinetics (Table 2 and Figure 6A). To further investigate the potential for receptor subtype-specific effects on mIPSCs, recordings were also made in the presence of 100 nM zolpidem. Under control conditions zolpidem increased decay τ_2 as expected (comparison of control with and without zolpidem, $p<0.05$, Student's t test). Further, decay τ_2 in the presence of zolpidem (Table 2 and Fig. 6B) was decreased after ethanol + Rp-cAMP exposure (24.7 ± 3.2 , n=6) and increased after Sp-cAMP exposure (68.8 ± 9.0 , n=6) relative to controls (46.1 ± 3.7 , n=8, one-way ANOVA, $f=9.673$, $p<0.05$, Newman-Keuls post test, $p<0.05$ for both comparisons). No other mIPSC characteristics were altered in the presence of zolpidem following modulation of PKA activity (Table 2).

JPET #201954

Discussion

The present results demonstrate that ethanol activation of PKA plays an active role in GABA_A receptor trafficking and function. PKA activation results in an increase in GABA_A α 1 subunit expression in P2 and biotinylated fractions of surface receptors in cultured cortical neurons. The finding that these alterations corresponded to functional changes in zolpidem enhancement of GABA responses corroborates this conclusion. Additionally, our results highly implicate oppositional roles of PKA and PKC in GABA_A receptor regulation. Ethanol is known to activate both PKA and PKC pathways, and our past results coupled with the present studies indicate that such changes in activity are accompanied by increases in PKA and PKC abundance in the P2 fraction. We demonstrate that inhibiting the activity of either kinase pathway in the presence of ethanol results in GABA_A α 1 subunit alterations that are dependent on the sum of the activity of these protein kinase pathways. Specifically, inhibition of PKC in the presence of ethanol results in increased GABA_A α 1 surface expression, similar to that observed following exposure to PKA activators alone. Furthermore, a decrease in GABA_A receptor α 1 subunit levels similar to that found in models of ethanol dependence *in vivo* (Devaud et al., 1997; Cagetti et al., 2003; Liang et al., 2004) or 4hr ethanol exposure *in vitro* (Kumar et al., 2010; Werner et al., 2011) could be observed after 1 hr ethanol exposure in the presence of a PKA antagonist.

The results suggest that ethanol activates at least two opposing pathways in the cerebral cortex: PKA and PKC. While PKC γ activation results in decreased GABA_A receptor α 1 subunit (Kumar et al., 2010), PKA appears to counteract these changes. Such opposition is consistent with previous studies that have found an apparent antagonistic role of PKA and PKC working in other CNS systems (Vaello et al., 1994; Brandon et al., 2000; Grey and Chang, 2011). The data further suggest that these kinases are under time-dependent regulation by ethanol. While PKA and PKC are both active at 1 hr of ethanol exposure, no overall change in GABA_A α 1 subunit expression is observed. By four hours, however, PKA activity has returned to baseline while PKC remains active, and trafficking of GABA_A α 1 receptors is observed (Kumar et al., 2010; Werner et al., 2011). An increase in PKA translocation to the P2 synaptosomal region is consistent with ethanol-induced

JPET #201954

activation of PKA observed in other cellular systems (Diamond and Gordon, 1997). While the exact role of increased PKA subunits in the synaptosomal region is unclear, the effects of direct activation by Sp-cAMP, or inactivation by Rp-cAMP in the presence of ethanol, would suggest that ethanol is increasing overall catalytic activity by PKA. Future studies might investigate the specific phosphorylation states regulating trafficking of $\alpha 1$ subunits by the oppositional PKA and PKC activation by ethanol.

The present results extend several recent studies characterizing altered GABA_A regulation following ethanol exposure. These alterations include a shift in the normal synaptic and extrasynaptic GABA_A receptor trafficking. Studies in the hippocampus have found a decrease in synaptic $\alpha 1$ and extrasynaptic $\alpha 4\delta$ receptors, and a corresponding increase in synaptic $\alpha 4$ GABA_A receptors following both acute (Liang et al., 2007) and chronic (Cagetti et al., 2003; Liang et al., 2004) ethanol exposure thereby producing an overall decrease in GABAergic inhibition and increasing CNS hyperexcitability. The present results suggest that these processes are conserved in the cerebral cortex as well (Kumar et al., 2010; Werner et al., 2011). The lack of an effect of brief (1hr) ethanol exposure on GABA_A $\alpha 1$ receptors in the present study is consistent with prior reports in cerebral cortex and in cultured cortical neurons (Kumar et al., 2003; Kumar et al., 2010); however, more rapid effects of ethanol have been observed in rat hippocampus (Liang et al., 2007), suggesting that the time course of ethanol regulation of GABA_A receptors may differ across brain regions. We have previously shown that ethanol activation of PKC differs in rat cortex and hippocampus (Kumar et al., 2006). Further studies are needed to determine if regional differences in the time course of ethanol regulation of GABA_A receptors are secondary to regional differences in ethanol activation of protein kinases.

Previous studies have shown that PKA and PKC activation have direct effects on GABA responses that were not observed in the present study (Kittler and Moss, 2003). This is likely due to the use of different model systems and the fact that we focused on the GABA_A $\alpha 1$ receptors in cerebral cortex that are sensitive to 100nM zolpidem. To isolate effects on these receptors in cultured neurons, we used an IC₁₀ concentration of GABA. It is quite possible that effects of PKA or PKC inhibition may have been observed at higher concentrations of GABA, however, such an experiment would involve actions at additional receptor subtypes.

JPET #201954

Although effects of PKA on GABA_A receptor function have been previously observed (Brandon et al., 2003; Lilly et al., 2003), this is the first evidence that PKA specifically regulates trafficking and function of zolpidem-sensitive GABA_A α 1 receptors. The observation that inhibition of PKA or PKC alone had no effect on α 1 receptor abundance or function, however, suggests that these kinases do not constitutively regulate GABA_A α 1 receptors. Rather, these pathways may only become active regulators of GABAergic inhibition following physiological insults such as ethanol exposure or processes associated with epileptogenesis (Gonzalez and Brooks-Kayal, 2011).

Although our present results demonstrate modulation of GABA_A receptor α 1 subunit abundance by PKA *in vitro*, our previous results suggest the same processes occur *in vivo* (Kumar et al., 2012). Recently, we found GABA_A α 1 levels in rat cerebral cortex were increased following an acute ethanol injection, concurrent with an increase in PKA, whereas PKC was unchanged. Further, behavioral studies have well established that PKA is a key mediator of ethanol sensitivity. Infusion of Sp-cAMP into the lateral ventricles prior to systemic ethanol administration increased LORR (loss of righting reflex) duration (Kumar et al., 2012). Conversely, inhibition of PKA prior to ethanol administration decreased LORR duration (Lai et al., 2007) and withdrawal-induced anxiety (Pandey et al., 2003). Studies utilizing mutant mouse lines with reduced PKA activity mimic results found with pharmacological inhibition of PKA (Thiele et al., 2000; Naassila et al., 2002; Kim et al., 2011). The precise role of PKA in mediating these behaviors is complex, however, as some studies have found increased ethanol sensitivity in animals with diminished PKA activity (Wand et al., 2001; Yang et al., 2003; Maas et al., 2005). While the precise role remains equivocal, collectively these studies clearly establish the importance of PKA activation in mediating the behavioral effects of ethanol, potentially through GABA_A receptor regulation. The present results underscore the clinical relevance of understanding the role of PKA in modulating the effects of ethanol for the development of drugs for the treatment of alcoholism.

The relatively rapid time course over which changes in zolpidem potentiation were observed suggests a post-translational mechanism of GABA_A receptor regulation (Brandon et al., 2002). Previous studies in cultured cerebral cortical neurons have found changes in GABA_A receptor activity via phosphorylation and

JPET #201954

dephosphorylation to be due entirely to changes in channel gating and conductance rather than channel number (Brandon et al., 2000). The fact that the functional changes were observed prior to alterations in surface receptor expression suggest that multiple mechanisms of GABA regulation may be involved, including both direct effects on channel conductance as well as receptor trafficking. Further studies investigating single channel conductance states and utilizing phosphorylation state dependent antibodies will help to elucidate these mechanisms. Additionally, the observation that whole cell GABA-evoked current amplitude was unchanged would suggest bidirectional regulation of GABA receptor subtypes by PKA, as well as ethanol. Thus, while PKA activation leads to increased surface expression of GABA_A α 1 receptors, there is likely a concurrent decrease in other subtypes. Previous studies have observed bidirectional regulation of synaptic GABA_A α 1 and α 4 containing receptors by PKC γ (Kumar et al., 2010; Werner et al., 2011), and studies are currently underway to investigate bidirectional regulation of GABA_A α 4 receptors by PKA.

Overall, the present study elucidates a novel role for PKA in the subcellular pathways mediating the effects of ethanol. While PKC and PKA play important roles in altered GABA_A receptor trafficking following ethanol exposure, it is possible that other kinases or phosphatases are also active. In particular, ethanol-induced adaptations in other brain regions may be governed by different subcellular mechanisms, which could, in part, account for some of the brain region-specific effects of ethanol. This area requires further study to fully elucidate the physiology of ethanol intoxication and withdrawal. Nonetheless, the current results suggest that PKA activation may delay some ethanol-induced adaptations in GABAergic signaling. Additionally, PKA may provide a promising target for the development of drugs aimed at restoring normal GABA_A receptor functioning for the treatment of multiple pathologies involving similar GABA_A receptor adaptations including alcohol dependence, epilepsies and benzodiazepine abuse.

Acknowledgements

We would like to thank Hugh E. Criswell for helpful discussions and Todd K. O'Buckley for expert technical assistance.

JPET #201954

Authorship Contributions

Participated in research design: Carlson, Kumar, Morrow

Conducted experiments: Carlson, Kumar, Comerford

Contributed new reagents or analytic tools: N/A

Performed data analysis: Carlson, Kumar, Comerford

Wrote or contributed to the writing of the manuscript: Carlson, Werner, Comerford, Morrow

JPET #201954

References

- Brandon N, Jovanovic J and Moss S (2002) Multiple roles of protein kinases in the modulation of gamma-aminobutyric acid(A) receptor function and cell surface expression. *Pharmacol Ther* **94**:113-122.
- Brandon NJ, Delmas P, Kittler JT, McDonald BJ, Sieghart W, Brown DA, Smart TG and Moss SJ (2000) GABA_A receptor phosphorylation and functional modulation in cortical neurons by a protein kinase C-dependent pathway. *J Biol Chem* **275**:38856-38862.
- Brandon NJ, Jovanovic JN, Colledge M, Kittler JT, Brandon JM, Scott JD and Moss SJ (2003) A-kinase anchoring protein 79/150 facilitates the phosphorylation of GABA(A) receptors by cAMP-dependent protein kinase via selective interaction with receptor beta subunits. *Mol Cell Neurosci* **22**:87-97.
- Cagetti E, Liang J, Spigelman I and Olsen RW (2003) Withdrawal from chronic intermittent ethanol treatment changes subunit composition, reduces synaptic function, and decreases behavioral responses to positive allosteric modulators of GABA_A receptors. *Mol Pharmacol* **63**:53-64.
- Chen S, Huang X, Zeng XJ, Sieghart W and Tietz EI (1999) Benzodiazepine-mediated regulation of α 1, α 2, β 1-3 and gamma2 GABA_A receptor subunit proteins in the rat brain hippocampus and cortex. *Neuroscience* **93**:33-44.
- Devaud LL, Fritschy J-M, Sieghart W and Morrow AL (1997) Bidirectional alterations of GABA_A receptor subunit peptide levels in rat cortex during chronic ethanol consumption and withdrawal. *J Neurochem* **69**:126-130.
- Diamond I and Gordon AS (1997) Cellular and molecular neuroscience of alcoholism. *Physiol Rev* **77**:1-20.
- Dohrman DP, Diamond I and Gordon AS (1996) Ethanol causes translocation of cAMP-dependent protein kinase catalytic subunit to the nucleus. *Proc Natl Acad Sci U S A* **93**:10217-10221.
- Fleming RL, Manis PB and Morrow AL (2009) The effects of acute and chronic ethanol exposure on presynaptic and postsynaptic gamma-aminobutyric acid (GABA) neurotransmission in cultured cortical and hippocampal neurons. *Alcohol* **43**:603-618.
- Gonzalez MI and Brooks-Kayal A (2011) Altered GABA(A) receptor expression during epileptogenesis. *Neurosci Lett* **497**:218-222.
- Grey CL and Chang JP (2011) Differential involvement of protein kinase C and protein kinase A in ghrelin-induced growth hormone and gonadotrophin release from goldfish (*Carassius auratus*) pituitary cells. *J Neuroendocrinol* **23**:1273-1287.
- Ives JH, Drewery DL and Thompson CL (2002) Differential cell surface expression of GABA_A receptor α 1, α 6, β 2 and β 3 subunits in cultured mouse cerebellar granule cells influence of cAMP-activated signalling. *J Neurochem* **80**:317-327.
- Kim KS, Kim H, Baek IS, Lee KW and Han PL (2011) Mice lacking adenylyl cyclase type 5 (AC5) show increased ethanol consumption and reduced ethanol sensitivity. *Psychopharmacology (Berl)* **215**:391-398.
- Kittler JT and Moss SJ (2003) Modulation of GABA_A receptor activity by phosphorylation and receptor trafficking: implications for the efficacy of synaptic inhibition. *Curr Opin Neurobiol* **13**:341-347.
- Kralic JE, Criswell HE, Osterman JL, O'Buckley TK, Wilkie ME, Matthews DB, Hamre K, Breese GR, Homanics GE and Morrow AL (2005) Genetic essential tremor in gamma-aminobutyric acid(A) receptor alpha1 subunit knockout mice. *J Clin Invest* **115**:774-779.
- Kralic JE, Korpi ER, O'Buckley TK, Homanics GE and Morrow AL (2002) Molecular and pharmacological characterization of GABA_A receptor α 1 subunit knockout mice. *J Pharmacol Exp Ther* **302**:1037-1045.
- Kumar S, Fleming R and Morrow AL (2004) Ethanol regulation of γ -aminobutyric acid_A receptors: genomic and nongenomic mechanisms. *Pharmacology & Therapeutics* **101**:211-226.
- Kumar S, Kralic JE, O'Buckley TK, Grobin AC and Morrow AL (2003) Chronic ethanol consumption enhances internalization of α 1 subunit-containing GABA_A receptors in cerebral cortex. *J Neurochem* **86**:700-708.
- Kumar S, Lane BM and Morrow AL (2006) Differential effects of systemic ethanol administration on PKC ϵ , γ and β isoform expression, translocation to membranes and target phosphorylation: Reversal by chronic ethanol exposure. *J Pharmacol Exp Ther* **319**:1366-1375.

JPET #201954

- Kumar S, Porcu P, Werner DF, Matthews DB, Diaz-Granados JL, Helfand RS and Morrow AL (2009) The role of GABA_A receptors in the acute and chronic effects of ethanol: a decade of progress. *Psychopharmacology (Berl)* **205**:529-564.
- Kumar S, Ren Q, Beckley JH, O'Buckley TK, Gigante ED, Santerre JL, Werner DF and Morrow AL (2012) Ethanol activation of protein kinase A regulates GABA(A) receptor subunit expression in the cerebral cortex and contributes to ethanol-induced hypnosis. *Front Neurosci* **6**:44.
- Kumar S, Suryanarayanan A, Boyd KN, Comerford CE, Lai MA, Ren Q and Morrow AL (2010) Ethanol reduces GABAA alpha1 subunit receptor surface expression by a protein kinase Cgamma-dependent mechanism in cultured cerebral cortical neurons. *Mol Pharmacol* **77**:793-803.
- Lai CC, Kuo TI and Lin HH (2007) The role of protein kinase A in acute ethanol-induced neurobehavioral actions in rats. *Anesth Analg* **105**:89-96.
- Liang J, Cagetti E, Olsen RW and Spigelman I (2004) Altered pharmacology of synaptic and extrasynaptic GABA_A receptors on CA1 hippocampal neurons is consistent with subunit changes in a model of alcohol withdrawal and dependence. *J Pharmacol Exp Ther* **310**:1234-1245.
- Liang J, Suryanarayanan A, Abriam A, Snyder B, Olsen RW and Spigelman I (2007) Mechanisms of reversible GABA_A receptor plasticity after ethanol intoxication. *J Neurosci* **27**:12367-12377.
- Liang J, Zhang N, Cagetti E, Houser CR, Olsen RW and Spigelman I (2006) Chronic intermittent ethanol-induced switch of ethanol actions from extrasynaptic to synaptic hippocampal GABAA receptors. *J Neurosci* **26**:1749-1758.
- Lilly SM, Zeng XJ and Tietz EI (2003) Role of protein kinase A in GABAA receptor dysfunction in CA1 pyramidal cells following chronic benzodiazepine treatment. *J Neurochem* **85**:988-998.
- Maas JW, Jr., Vogt SK, Chan GC, Pineda VV, Storm DR and Muglia LJ (2005) Calcium-stimulated adenylyl cyclases are critical modulators of neuronal ethanol sensitivity. *J Neurosci* **25**:4118-4126.
- Naassila M, Ledent C and Daoust M (2002) Low ethanol sensitivity and increased ethanol consumption in mice lacking adenosine A2A receptors. *J Neurosci* **22**:10487-10493.
- Pandey SC, Roy A and Zhang H (2003) The decreased phosphorylation of cyclic adenosine monophosphate (cAMP) response element binding (CREB) protein in the central amygdala acts as a molecular substrate for anxiety related to ethanol withdrawal in rats. *Alcohol Clin Exp Res* **27**:396-409.
- Shen Y, Lindemeyer AK, Spigelman I, Sieghart W, Olsen RW and Liang J (2011) Plasticity of GABAA receptors after ethanol pre-exposure in cultured hippocampal neurons. *Mol Pharmacol* **79**:432-442.
- Thiele TE, Willis B, Stadler J, Reynolds JG, Bernstein IL and McKnight GS (2000) High ethanol consumption and low sensitivity to ethanol-induced sedation in protein kinase A-mutant mice. *J Neurosci* **20**:RC75.
- Vaello ML, Ruiz-Gomez A, Lerma J and Mayor F, Jr. (1994) Modulation of inhibitory glycine receptors by phosphorylation by protein kinase C and cAMP-dependent protein kinase. *J Biol Chem* **269**:2002-2008.
- Wand G, Levine M, Zweifel L, Schwindinger W and Abel T (2001) The cAMP-protein kinase A signal transduction pathway modulates ethanol consumption and sedative effects of ethanol. *The Journal of neuroscience : the official journal of the Society for Neuroscience* **21**:5297-5303.
- Werner DF, Kumar S, Criswell HE, Suryanarayanan A, Fetzer JA, Comerford CE and Morrow AL (2011) PKCgamma is required for ethanol-induced increases in GABA(A) receptor alpha4 subunit expression in cultured cerebral cortical neurons. *J Neurochem* **116**:554-563.
- Yang X, Oswald L and Wand G (2003) The cyclic AMP/protein kinase A signal transduction pathway modulates tolerance to sedative and hypothermic effects of ethanol. *Alcohol Clin Exp Res* **27**:1220-1225.
- Zeng XJ and Tietz EI (1999) Benzodiazepine tolerance at GABAergic synapses on hippocampal CA1 pyramidal cells. *Synapse* **31**:263-277.
- Zhang H and Pandey SC (2003) Effects of PKA modulation on the expression of neuropeptide Y in rat amygdaloid structures during ethanol withdrawal. *Peptides* **24**:1397-1402.

JPET #201954

Footnotes

This work was supported by the National Institute of Health grants [AA011605], [AA015409], [AA007573] and the Bowles Center for Alcohol Studies. *Current address: Psychology Department, Binghamton University, Binghamton, NY 13902

JPET #201954

Figure Legends

Figure 1. One hour ethanol (50 mM) alters expression of protein kinase subunits in the P2 fraction of cultured cortical neurons. Cortical neurons were exposed to ethanol (50 mM for 60 min) followed by preparation of P2 fractions. Western blot analysis of P2 fraction of cortical neurons revealed P2 fraction levels of (A) GABA_A α 1 were unchanged, while (B) PKC γ subunit levels were increased by $78.1 \pm 25.2\%$, (C) PKA RII α were increased by $35.5 \pm 12.7\%$, and (D) PKA RII β subunit levels were increased by $36.4 \pm 11.1\%$ following ethanol exposure. Graphs show the mean \pm SEM of percent control optical density values normalized to β -actin levels (n=4-7 per group). * $p < 0.05$, compared to vehicle (Student's t test).

Figure 2. PKA activator Sp-cAMP increases GABA_A α 1 subunit expression and zolpidem potentiation in cultured cortical neurons. Cortical neurons were exposed to vehicle or SP-cAMP for 60 min followed by preparation of cellular fractions for Western blot analysis or patch clamp recording. Activation of PKA increased GABA_A receptor α 1 subunit expression in the P2 fraction (A; $58.4 \pm 13.7\%$) and in the biotinylated surface protein fraction (B; 50.5 ± 18.5) compared to vehicle controls. There was a corresponding decrease in α 1 subunit levels in the cytosolic fraction following Sp-cAMP (C; $54.0 \pm 10.7\%$). (D) There was no effect of Sp-cAMP exposure on GABA dose-response (control EC₅₀=15.2 μ M; Sp-cAMP EC₅₀=17.5 μ M) or (E) whole cell current amplitude in response to 10 μ M GABA. Sp-cAMP exposure significantly increased zolpidem potentiation relative to controls (F; $78.1 \pm 9.4\%$). (G) Representative GABA-evoked (10 μ M) current trace for Control and Sp-cAMP exposure with and without 100 nM zolpidem are shown. Data are presented as mean \pm SEM. Representative blots are shown. * $p < 0.05$, Student's t -test. n = 6-18 per group.

Figure 3. PKA activation produces rapid increases in zolpidem potentiation of GABA responses. Whole cell currents were evoked by application of GABA (1 μ M) and zolpidem (100 nM) at two minute intervals over the course of one hour with vehicle or Sp-cAMP (50 μ M) exposure. (A) Currents evoked in Sp-cAMP-exposed cells were increased from 12-60 min. (repeated measures ANOVA, $f=3.648$, $p<0.05$, Bonferroni post test),

JPET #201954

while control cells were unaffected. Data are presented as mean \pm SEM. n = 3-4. (B) Representative whole cell current traces elicited by GABA and zolpidem before (t=0) and after (t=60 min) exposure.

Figure 4. PKA inhibitor Rp-cAMP decreases GABA_A α 1 expression and zolpidem potentiation in the presence of ethanol. Neurons were exposed to vehicle, ethanol (50 mM), ethanol with Rp-cAMP (50 μ M), or Rp-cAMP alone for 60 min followed by preparation of P2 fractions for Western blot analysis or patch clamp recording. Ethanol or Rp-cAMP exposure alone did not alter GABA_A receptor α 1 subunit expression; however, ethanol exposure in the presence of the PKA inhibitor Rp-cAMP decreased GABA_A receptor α 1 subunit expression by 33% (A; one-way ANOVA, $f=12.42$, $p<0.05$, Newman-Keuls post test). There was no effect of drug exposure on (B) GABA dose-response (not all dose-response curves shown for visual simplicity; EtOH+Rp-cAMP EC₅₀=16.4 μ M) or (C) whole cell current amplitude in response to 10 μ M GABA. (D) EtOH+Rp-cAMP decreased zolpidem potentiation (one-way ANOVA, $f=4.031$, $p<0.05$, Newman-Keuls post test) of GABA-evoked currents compared to vehicle control, while EtOH or Rp-cAMP had no effect. (E) Representative GABA-evoked (10 μ M) current trace for Control and EtOH+Rp-cAMP exposure with and without 100 nM zolpidem. Data are presented as mean \pm SEM. Optical density values normalized to β -actin. Representative blots are shown. * $p < 0.05$, one-way ANOVA, Newman-Keuls post-hoc test. n = 3-21 per group.

Figure 5. PKA and PKC activation by ethanol produce opposing effects on GABA_A α 1 expression and zolpidem potentiation of GABA responses. (A) Neurons were exposed to vehicle, ethanol (50 mM) or ethanol with calphostin C (CalC, 0.3 μ M) for 60 min followed by preparation of P2 fractions and Western blot analysis. Ethanol or CalC exposure alone did not alter GABA_A receptor α 1 subunit expression; however, ethanol exposure in the presence of the PKC inhibitor CalC increased GABA_A receptor α 1 subunit expression by 56% (one-way ANOVA, $f=11.91$, $p<0.05$, Newman-Keuls post-hoc test) (B-C) Whole cell currents were evoked by application of GABA (1 μ M) and zolpidem (100 nM) at two minute intervals over the course of one

JPET #201954

hour during ethanol exposure (50 mM), ethanol and Rp-cAMP (50 μ M), or ethanol and Calphostin-C (CalC; 3 μ M). Currents were stable for the 10 min period prior to bath application of ethanol and during diffusion of CalC or Rp-cAMP via the recording pipette. Currents evoked by EtOH+CalC were significantly increased from 14 - 60 min (repeated measures ANOVA, $f=3.863$, $p<0.05$, Bonferroni post test). Currents evoked by EtOH+Rp-cAMP were significantly decreased at 8 - 60 min (repeated measures ANOVA, $f=11.10$, $p<0.01$, Bonferroni post test). (C) Representative whole cell current traces elicited by GABA and zolpidem before ($t=0$) and after ($t=60$ min) ethanol and drug exposure. Data are presented as mean \pm SEM. $n = 3-6$ per group.

Figure 6. Ethanol and PKA modulation of GABA_A mIPSC decay kinetics in the presence of zolpidem.

Recordings were made in the presence of TTX, CNQX, and AP-5 to pharmacologically isolate GABA mIPSCs. Representative averaged mIPSC traces, following exposure to vehicle (control) or drug and standardized for peak amplitude, are shown. (A) Representative control (no zolpidem) traces following control, ethanol, Sp-cAMP, or ethanol+Rp-cAMP exposure. (B) Representative traces in the presence of zolpidem (100 nM) following control, Sp-cAMP, or ethanol+Rp-cAMP exposure. Summarized data are shown in Table 2.

JPET #201954

Table 1. Comparison of effects of ethanol at 1 and 4 hr on P2 fraction protein levels.

Protein	1 Hr EtOH	4 Hr EtOH
GABA_A α1	- 109.4 ± 9.6	↓ 59.8 ± 15.0 *
PKCγ	↑ 178.1 ± 21.0 *	↑ 152.3 ± 19.0 *
PKA RIIα	↑ 135.5 ± 12.7 *	- 97.1 ± 5.3
PKA RIIβ	↑ 136.4 ± 11.1 *	- 100.7 ± 4.2

*p < 0.05, compared to Controls, Student's t test. Data for 4 hr time point levels of GABA_A α1 and PKCγ are from Kumar et al. (2010).

Table 2. GABA_A mIPSC kinetics following exposure to PKA modulators and ethanol

Measure	Control	EtOH	EtOH + Rp-cAMP	Sp-cAMP
Rise Time (ms)	3.6 ± 1.5	1.2 ± 0.8	4.0 ± 1.5	1.3 ± 0.9
Decay 90-37 (ms)	14.4 ± 2.6	21.7 ± 1.6	14.9 ± 2.2	16.7 ± 2.2
Half-width (ms)	12.6 ± 2.5	20.1 ± 0.7	14.5 ± 3.2	16.4 ± 2.0
Amplitude (pA)	25.3 ± 0.8	23.4 ± 1	23.2 ± 1.1	21.8 ± 1.8
Frequenzy (Hz)	2.6 ± 0.9	1.6 ± 0.2	1.6 ± 0.5	1.5 ± 0.3
Decay τ ₁	13.2 ± 2.4	18.3 ± 2.0	15.0 ± 3.2	16.8 ± 1.7
Decay τ ₂	31.0 ± 6.4	36.6 ± 5.8	26.3 ± 2.5	45.6 ± 10
Decay τ ₂ with zolpidem	# 46.1 ± 3.7	46.2 ± 6.0	* 24.7 ± 3.2	* 68.8 ± 9.0
n	8	6	6	6

*p < 0.05, compared to Controls with zolpidem, one-way ANOVA, Newman-Keuls post test.

#p < 0.05, compared to Control Decay τ₂ (without zolpidem), Student's t test.

Figure 1

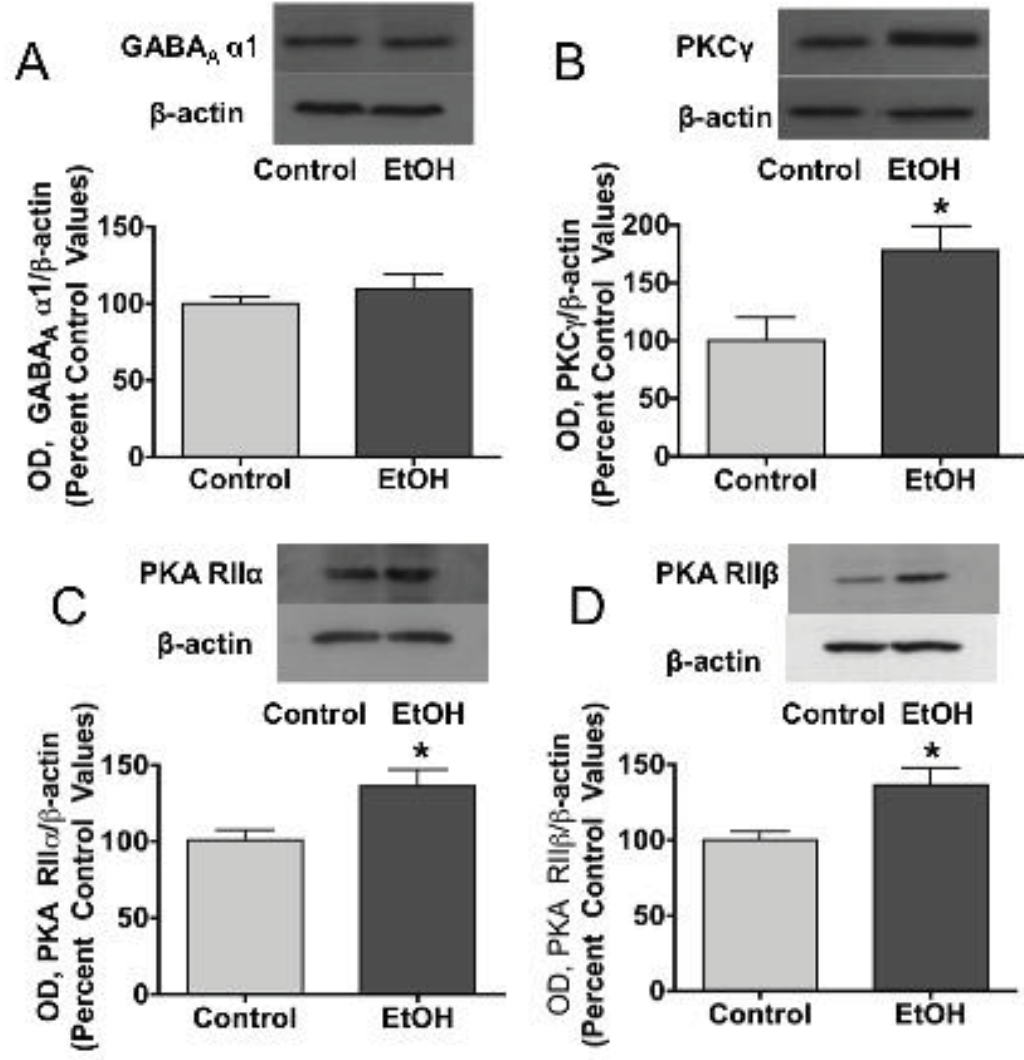


Figure 2

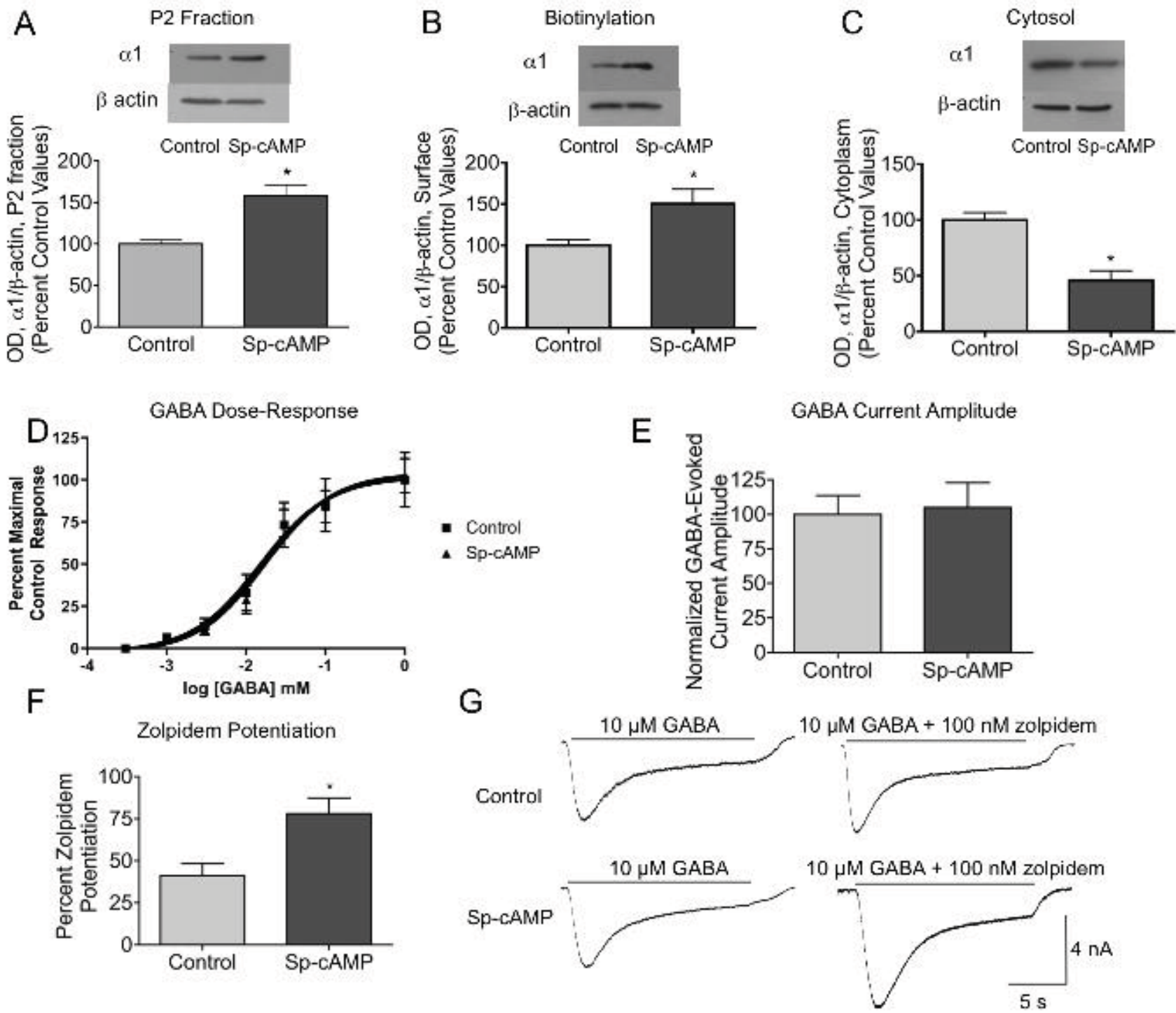


Figure 3

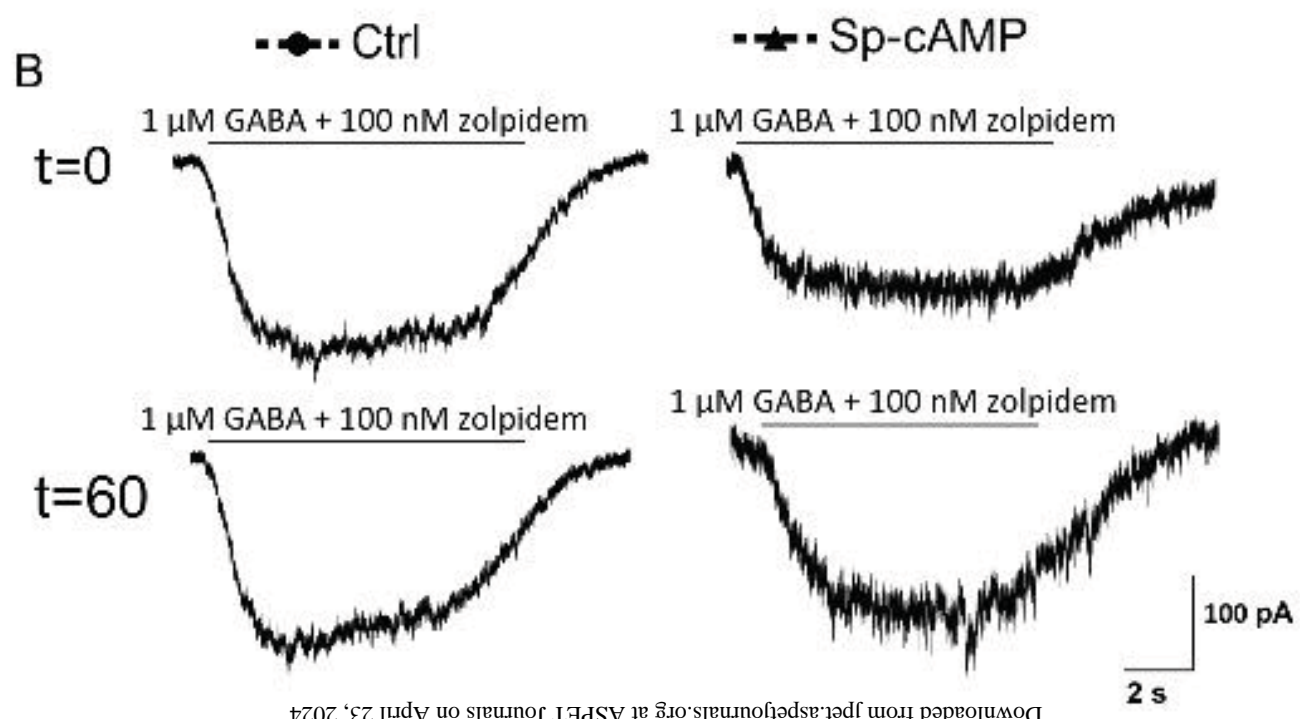
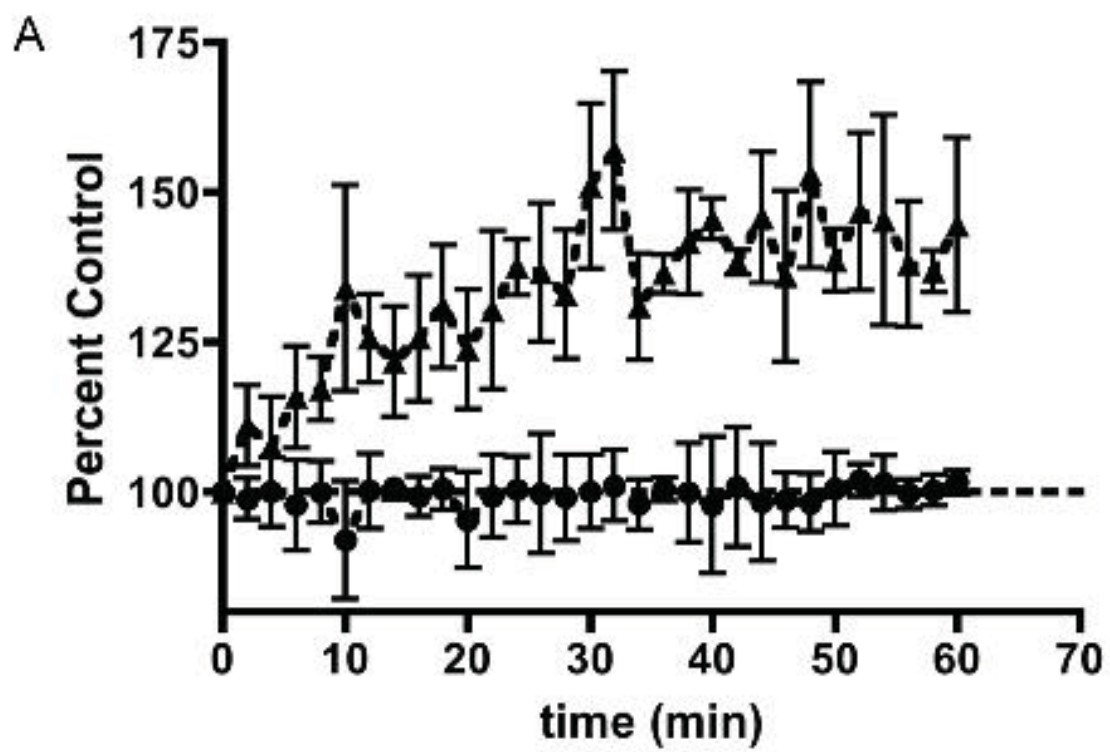


Figure 4

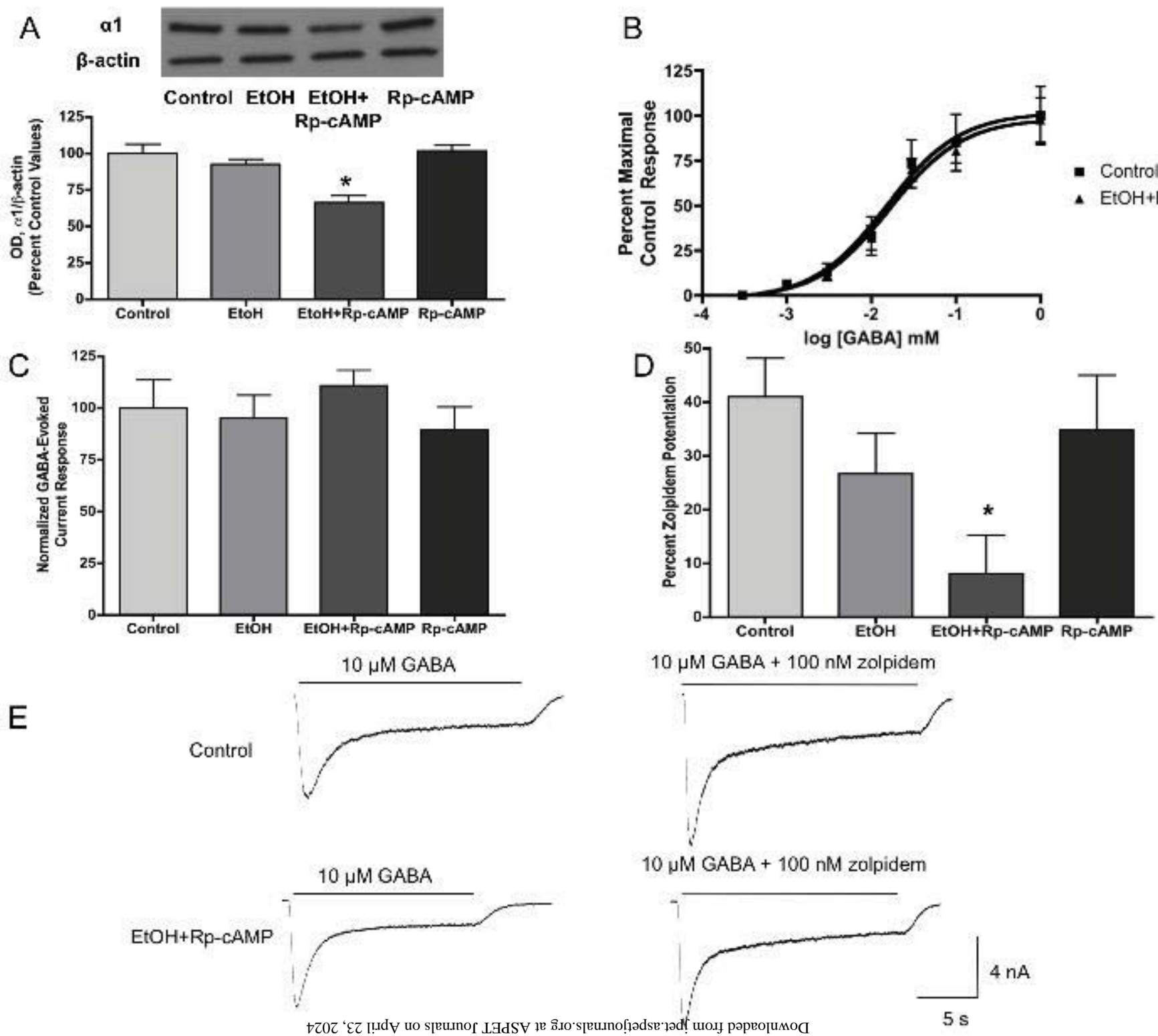


Figure 5

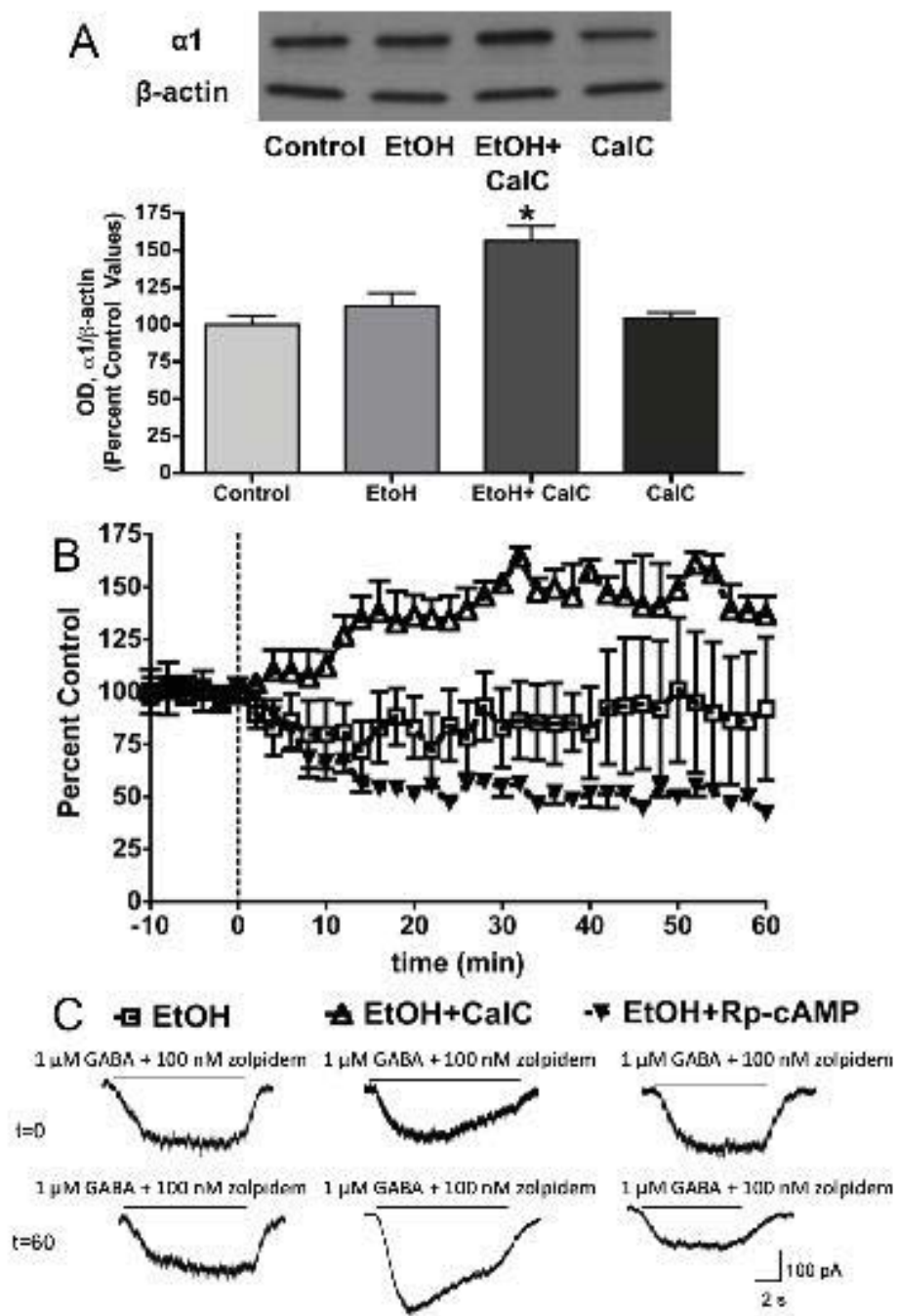


Figure 6

