

A Guinea Pig Hippocampal Slice Model of Organophosphate-Induced Seizure Activity

Patrick K. Harrison, Robert D. Sheridan, A. Chris Green, Iain R. Scott, and John E. H. Tattersall

Biomedical Sciences, Dstl, Porton Down, Salisbury, Wiltshire, United Kingdom

Received January 12, 2004; accepted March 18, 2004

ABSTRACT

Extracellular recording techniques have been used in the guinea pig hippocampal slice preparation to investigate the electrophysiological actions of the organophosphate (OP) anticholinesterase soman. When applied at a concentration of 100 nM, soman induced epileptiform activity in the CA1 region in approximately 75% of slices. This effect was mimicked by the anticholinesterases paraoxon (1 and 3 μ M), physostigmine (30 μ M), and neostigmine (30 μ M), thus providing indirect evidence that the epileptiform response was mediated by elevated acetylcholine levels. Soman-induced bursting was inhibited by the muscarinic receptor antagonists atropine (concentrations tested, 0.1–10 μ M), telenzepine (0.03–3 μ M), AF-DX116 [11-(2-[(diethylamino)methyl]-1-piperidinyl acetyl)-5,11-dihydro-6H-pyrido 9,2-b-b) (1,4)-benzodiazepin-6-one] (0.3–300 μ M), and biperiden (0.1–10 μ M) and by the

benzodiazepine anticonvulsants diazepam (3–30 μ M) and midazolam (3–30 μ M), but it was not inhibited by the nicotinic antagonists mecamylamine (30 μ M) and methyllycaconitine (300 nM). In contrast to soman-induced epileptiform activity, bursting induced by the K⁺ channel blocker 4-aminopyridine (30 μ M), the adenosine A1 receptor antagonist 8-cyclopentyl-1,3-dipropylxanthine (30 nM) or perfusion with low Mg²⁺ buffer was insensitive to atropine (10 μ M). The ability of muscarinic antagonists and benzodiazepines to inhibit soman-induced epileptiform activity is in accordance with the *in vivo* pharmacology of soman-induced seizures and suggests that the guinea pig hippocampal slice preparation may provide a useful tool for the evaluation of novel anticonvulsant therapies for the treatment of seizures related to OP poisoning.

OP insecticides (e.g., paraoxon) and nerve agents (e.g., soman and sarin) exert their toxicity by irreversibly inhibiting AChE, leading to ACh accumulation and overstimulation of cholinergic pathways (Taylor, 1996). The symptoms and signs of OP intoxication are predominantly due to muscarinic receptor overstimulation and include miosis, bronchoconstriction, bradyarrhythmias, seizures, and respiratory failure (McDonough and Shih, 1997; Brown and Brix, 1998; Lallement et al., 1998).

Treatment for mild OP intoxication consists of a muscarinic receptor antagonist (atropine) and an oxime reactivator of OP-inhibited enzyme (e.g., pralidoxime). In moderate-to-severe OP intoxication, a benzodiazepine (e.g., diazepam) may be added in an effort to control seizures and convulsions (Lallement et al., 1998; Shih and McDonough, 1999; McDonough et al., 2000). However, benzodiazepine treatment, although efficacious in the majority of circumstances, has scope

for improvement: OP-induced seizures can sometimes recur despite treatment, and even when seizures are abolished, neuronal damage can still arise (Hayward et al., 1990; Baze, 1993; Shih et al., 1999). The undesirable side effects of the benzodiazepine class of drugs (namely, sedation and respiratory depression) provide further impetus to identify more effective anticonvulsants for OP intoxication.

In animal experiments, the resistance of OP-induced seizures to conventional antiepileptic drugs such as phenytoin and carbamazepine therapies is well established (Shih et al., 1999). However, muscarinic receptor antagonists are highly effective in terminating soman-induced seizures when administered early on (i.e., 5 min after seizure onset) but become less efficacious when treatment is delayed for more than 10 min and can become ineffective when the delay is greater than 40 min (Shih et al., 1999). This progressive resistance to antimuscarinic therapy is thought to reflect a time-dependent transition from cholinergic to noncholinergic seizure mechanisms (McDonough and Shih, 1997; Lallement et al., 1998; Shih et al., 1999). These mechanisms include the recruitment of glutamatergic pathways as suggested by the

This work was supported by the UK Ministry of Defense.
Article, publication date, and citation information can be found at
<http://jpet.aspetjournals.org>.
DOI: 10.1124/jpet.104.065433.

ABBREVIATIONS: OP, organophosphate; AChE, acetylcholinesterase; ACh, acetylcholine; NMDA, *N*-methyl-D-aspartate; DPCPX, 8-cyclopentyl-1,3-dipropylxanthine; DFP, diisopropylphosphorofluoridate; ACSF, artificial cerebrospinal fluid; 4-AP, 4-aminopyridine; IPSC, inhibitory postsynaptic current.

observation that addition of NMDA antagonists (e.g., gacyclidine) to standard treatment regimes markedly improves the control and outcome of seizures (Lallement et al., 1999; Raveh et al., 1999). A similar profile of increased resistance to medical intervention due to recruitment of NMDA pathways has been proposed for status epilepticus (Rice and DeLorenzo, 1999).

Whereas the ability of AChE inhibitors and cholinergic agonists (e.g., pilocarpine; Turski et al., 1989) to induce seizures in vivo is well known, the precise areas of the brain involved in the initiation and maintenance of OP-induced seizures are uncertain. However, the hippocampus is an area of particular interest because it is known to be important in the initiation and maintenance of epileptic seizures. Moreover, this structure has a large cholinergic innervation (Lewis et al., 1967) and is damaged after OP-induced seizures (Hayward et al., 1990; Baze, 1993).

The in vitro hippocampal slice preparation is widely used to investigate seizure activity and evaluate antiepileptic/anticonvulsant drugs (Oliver et al., 1977) due to its ability to exhibit epileptiform activity. A variety of manipulations can induce this state, including application of 4-aminopyridine (4-AP) (Perreault and Avoli, 1991), 8-cyclopentyl-1,3-dipropylxanthine (DPCPX) (Alzheimer et al., 1989), and alteration of external Mg^{2+} (Psarropoulou and Haas, 1989). Of particular relevance to the current study is the report by Endres et al. (1989), who observed paraoxon-induced epileptiform activity in the CA1 region of guinea pig hippocampal slices in which the CA3 region had been removed. Epileptiform activity has also been reported in the rat hippocampal slice after application of anticholinesterases, although this has not been a universal finding (Cole and Nicoll, 1984; Lebeda and Rutecki, 1985; Williamson and Sarvey, 1985). Although Lebeda and Rutecki consistently saw the induction of epileptiform activity after application of the anticholinesterases diisopropylphosphorofluoridate (DFP) or soman, Cole and Nicoll (1984) observed the induction of epileptiform activity in only 20 to 30% of slices after application of physostigmine, whereas Williamson and Sarvey (1985) failed to see any epileptiform activity after application of either DFP or physostigmine (although a secondary population spike was induced).

The aim of the present work was the development and characterization of an in vitro model of OP-induced seizure activity in the hope of developing a useful tool for evaluating new therapies for OP poisoning. We have investigated the ability of soman to induce epileptiform activity in the guinea pig hippocampal slice. Several other OP and carbamate anticholinesterases were also tested for their ability to induce epileptiform activity. The effects of several muscarinic and nicotinic antagonists and two benzodiazepines on the epileptiform activity were also evaluated. Finally, the effect of atropine on alternative forms of epileptiform activity was assessed. A preliminary report of this work has been published in Harrison et al. (2000).

Materials and Methods

Guinea Pig Hippocampal Slices. Male Dunkin Hartley guinea pigs (250–500 g) were anesthetized with halothane and killed by decapitation. The brain was then removed and the left and right hippocampi removed. The hippocampus was then cut into temporal

and septal sections. The temporal section was mounted on a tissue block, and five to seven transverse slices (500 μ m in thickness) were prepared using a Vibratome (Intracel, Royston, UK). The slices were stored at room temperature in an ACSF of the following composition: 118 mM NaCl, 3 mM KCl, 25 mM $NaHCO_3$, 1.2 mM NaH_2PO_4 , 1 mM $MgCl_2$, 1.5 mM $CaCl_2$, and 10 mM D-glucose (gassed with 95% O_2 , 5% CO_2). Slices were left to recover for at least 1 h before transfer to a recording chamber (volume \approx 1 ml) where they were submerged and continuously superfused (at 10–15 ml min^{-1}) with gassed ACSF at 31°C.

Electrophysiological Recordings and Application of Compounds. After a further 30-min equilibration, an extracellular recording electrode (filled with 2 M NaCl; 1–5 M Ω resistance) was placed in CA1 stratum pyramidale to monitor neuronal activity. The Schaffer collateral/commissural pathway was then stimulated every 30 s via a bipolar stimulating electrode (stimulation pulse width \approx 150 μ s, amplitude \approx 250 μ A, MCE 100; Harvard Apparatus Inc., Holliston, MA), and the recording electrode lowered into CA1 changed until the population spike amplitude was maximal. Stimulation was then terminated. Baseline activity was monitored for at least 30 min before application of anticholinesterase, DPCPX, 4-AP, or low Mg^{2+} ACSF; any slices showing spontaneous epileptiform activity during this period were discarded. For the experiments with low Mg^{2+} ACSF, the slices were perfused with an ACSF of the same composition but with $MgCl_2$ omitted. Anticholinesterases were applied for up to 60 min; if epileptiform activity had not occurred by this time, the slice was classified as “unresponsive,” but only after slice viability had been confirmed by the appearance of epileptiform activity after exposure to 4-AP (30 μ M). In slices in which epileptiform activity occurred, the activity was allowed to continue for 15 min before addition of the test compound. All compounds were applied by addition of appropriate volumes of concentrated stock solution directly into the perfusion reservoir (exchange and equilibration of added compounds with the recording chamber occurred within 3 min). In a series of separate experiments, neither 0.3% (v/v) dimethyl sulfoxide nor 0.1% (v/v) ethanol (the maximum vehicle concentrations used) had any effect on epileptiform activity (data not shown).

Data Analysis. Data were captured via a CED 1401 ADC interface controlled by Spike 2 software (Cambridge Electronic Design, Cambridge, UK). The analog signal was digitized at 2 kHz. At the end of each experiment, the digitized trace was manually analyzed for burst characteristics (amplitude, duration, and rate) using on-screen cursors. A burst was defined as a deflection from baseline noise lasting >10 ms, with a magnitude of >0.1 mV above baseline and separated from neighboring “bursts” by a quiescent period of >2 s. To determine the effect of the various treatments on epileptiform activity, the average burst rate in the 10-min epoch immediately before treatment application was compared with the burst rate 30 to 40 min after treatment application (throughout this article, bursting and epileptiform activity are used interchangeably).

Unless otherwise specified, summarized data are presented as mean \pm S.E.M., with significance determined using one-way analysis of variance with Dunnett's post hoc test.

Drugs. All chemicals were obtained from Sigma Chemical (Poole, Dorset, UK) or Tocris Cookson Ltd. (Langford, UK) with the following exceptions: soman (pinacolyl methylphosphonofluoridate), purity $>95\%$, approximately 5 mg/ml solution in isopropyl alcohol, was synthesized by the Chemistry Department, Dstl. Porton Down; biperiden lactate (Akineton; α -bicyclo[2.2.1]hept-5-en-2-yl- α -phenyl-1-piperidinepropanol; Knoll, Nottingham, UK) and midazolam hydrochloride (Hypnovel; 8-chloro-6-(2-fluorophenyl)-1-methyl-4H-imidazo[1,5-a][1,4]-benzodiazepine; Roche Diagnostics, Indianapolis, IN) were obtained from Medical Supplies Agency (Andover, UK). Compounds were dissolved as follows: AF-DX 116 [11-(2-[(diethylamino)methyl]-1-piperidinyl acetyl)-5,11, dihydro-6H-pyrido 9,2.b-b) (1,4)-benzodiazepin-6-one; 100 mM in dimethyl sulfoxide), 4-AP (30 mM in water), atropine sulfate [endo-(\pm)- α -(hydroxymethyl)benzeneacetic acid 8-methyl-8-azabicyclo[3.2.1]oct-3-yl ester; 30 mM in water], biperiden lactate (supplied

formulated at 5 mg/ml), diazepam (7-chloro-1,3-dihydro-1-methyl-5-phenyl-2H-1,4-benzodiazepin-2-one; 30 mM in ethanol), DPCPX (30 mM in ethanol), mecamlamine hydrochloride [2-(methylamino)isocamphane; *N*,2,3,3-tetramethylbicyclo(2.2.1)heptan-2-amine; 100 mM in water], methylcaconitine citrate ([1 α ,4(*S*),6 β ,14 α ,16 β]-20-ethyl-1,6,14,16-tetramethoxy-4-[[2-(3-methyl-2,5-dioxo-1-pyrrolidinyl) benzoyl]oxy]methyl] aconitane-7,8-diol citrate; 3 mM in water), midazolam hydrochloride (supplied formulated at 5 mg/ml), neostigmine bromide [3-(*N,N*-dimethylcarbamoyloxy)-*N,N,N*,-trimethylanilinium bromide; 30 mM in water], paraoxan [*O,O*-diethyl *O*-(4-nitrophenyl) phosphate; as supplied], physostigmine hemisulfate [(3 α *S*-*cis*)-1,2,3,3 α ,8,8 α -hexahydro-1,3 α ,8-trimethylpyrrolo [2,3-*b*]indol-5-ol methylcarbamate hemisulfate; 30 mM in water], and telenzepine dihydrochloride [4,9-dihydro-3-methyl-4-[(4-methyl-1-piperazinylacetyl)]-10*H*-thienol[3,4-*b*][1,5] benzodiazepin-10-one; 30 mM in water).

Results

Effect of Soman on Neuronal Activity. Administration of soman (100 nM; a concentration that should rapidly abolish acetylcholinesterase activity; Santos et al., 2003) resulted in epileptiform activity that could be recorded from the CA1 stratum pyramidale in 117/154 slices (Fig. 1). The characteristics of epileptiform activity are summarized in Table 1. Within an individual slice, the burst duration did not vary greatly. Once initiated, bursting continued for up to 4.5 h (the longest time recorded) and once induced the activity was unaffected by washout of soman. Application of the vehicle for soman [0.0004% (v/v) isopropyl alcohol] did not induce bursting in four slices (data not shown).

Effect of Atropine on Soman-Induced Bursting. Previous in vivo experiments have shown that soman-induced epileptiform activity can be reversed by the muscarinic receptor antagonist atropine. If the activity induced here is from inhibition of AChE (with resulting overstimulation of cholinergic pathways), it too should be sensitive to blockade of these receptors. To test this hypothesis, we investigated the effect of atropine on soman-induced activity. When applied 15 min after the development of soman-induced bursting, atropine (0.1–10 μ M) inhibited bursting (Fig. 2). A significant reduction ($P < 0.05$) was seen at concentrations >100 nM. However, even at the highest concentration tested (10 μ M), bursting was never abolished, the burst rate being $23 \pm 11\%$ of pretreatment ($n = 5$).

Effect of Other Anticholinesterase Agents on Hippocampal Electrophysiology. To provide evidence that the bursting activity was due to inhibition of AChE, the effect of three other anticholinesterases was investigated. Paraoxon, applied at 1 μ M (four slices) and 3 μ M (three slices), neostigmine (30 μ M; four slices), and physostigmine (30 μ M; four slices) also induced epileptiform activity, which was sensitive to the muscarinic antagonist atropine (Fig. 3). We could not quantify any difference in the reversal produced by atropine between anticholinesterases.

Effect of Muscarinic Antagonists on Soman-Induced Bursting. Several subtype-selective muscarinic receptor antagonists also affected soman-induced bursting. The compounds chosen were the selective M₁ antagonist telenzepine, the selective M₂ antagonist AF-DX 116, and the M₁-preferring anti-Parkinson drug biperiden. Both telenzepine and biperiden reduced the rate of bursting in a concentration-related manner (Fig. 4). A significant effect ($P < 0.05$) was seen for telenzepine at concentrations of ≥ 100 nM and for

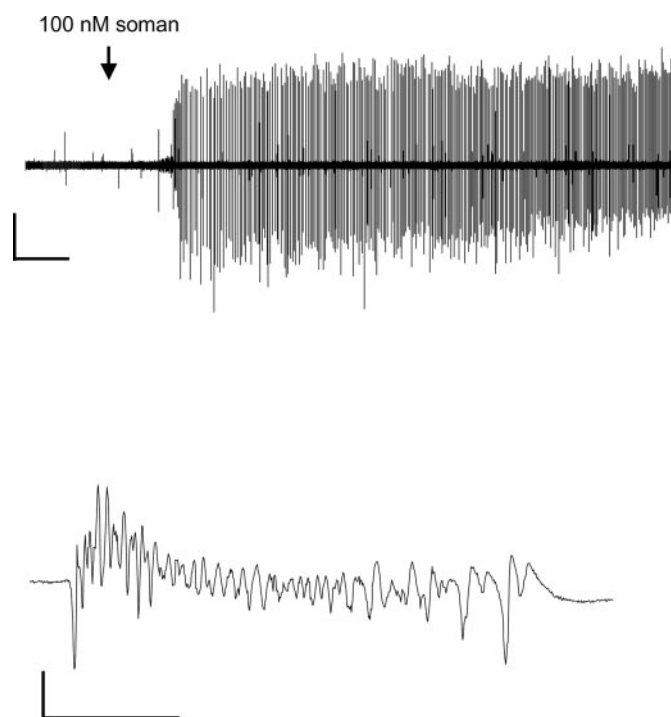


Fig. 1. Application of the organophosphate nerve agent soman induces epileptiform activity in the guinea pig hippocampal slice. The top trace is an example of the long-lasting epileptiform activity induced by 100 nM soman (horizontal scale bar, 15 min; vertical scale bar, 1 mV). The bottom trace shows an individual burst from the above-mentioned experiment on an expanded time base (horizontal scale bar, 100 ms; vertical scale bar, 1 mV).

TABLE 1

Characteristics of different forms of epileptiform activity

Values are means \pm S.E.; $n = 117$ for soman, $n = 5$ for 4-AP, $n = 5$ for DPCPX, and $n = 6$ for low Mg^{2+} ACSF.

	Characteristic			
	Time to Onset ^a min	Burst Rate ^b bursts/min	Amplitude ^c mV	Duration ^d ms
Soman	19.2 \pm 1.4	2.6 \pm 0.1	2.2 \pm 0.1	585 \pm 16
4-AP	4.8 \pm 0.5	9.1 \pm 0.9	2.6 \pm 0.4	290 \pm 38
DPCPX	12.8 \pm 2.4	5.9 \pm 0.6	2.4 \pm 0.7	340 \pm 23
Low Mg^{2+}	6.0 \pm 0.8	2.9 \pm 0.6	2.9 \pm 0.4	1890 \pm 897

^a Time taken from the application of treatment until the establishment of epileptiform activity.

^b Burst rate was defined as the average number of bursts per minute in the 10-min epoch 5 to 15 min after epileptiform activity was established.

^c Amplitude was defined as the maximum difference between the positive and negative deflection of the burst.

^d Duration of a single epileptiform burst.

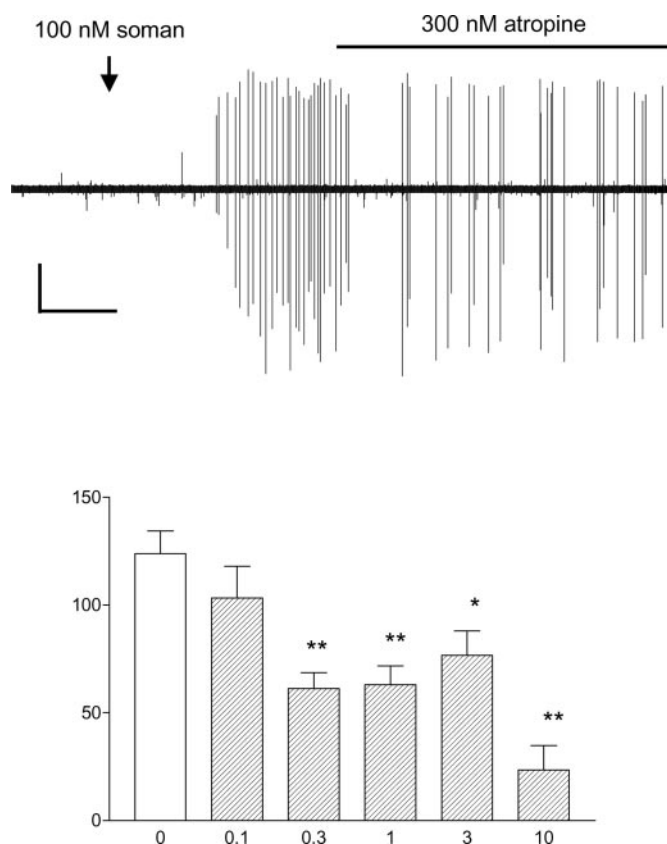


Fig. 2. Effect of atropine on soman-induced epileptiform activity. Effect of atropine in a single slice is shown above (horizontal scale bar, 15 min; vertical scale bar, 1 mV). A summary (bottom) of the effects of atropine after 30- to 40-min exposure (abscissa, concentration in micromolar; ordinate, burst rate as a percentage of pretreatment). Each bar represents the mean \pm S.E. of four to eight individual experiments. *, $P < 0.05$; **, $P < 0.01$.

biperiden at 10 μ M. AF-DX 116 was less potent, only producing a significant reduction ($P < 0.05$) in bursting at 300 μ M.

Time-Dependent Effect of Atropine. A characteristic of nerve agent-induced seizures *in vivo* is that they become increasingly resistant to antimuscarinic intervention as the seizure continues. For this reason, a series of experiments was undertaken to compare the effects of atropine (300 nM) when added 15 or 75 min after the onset of epileptiform activity. The inhibition produced was not significantly different between the two time points ($P > 0.05$; unpaired, two-tailed t test). When added after 15 min of activity, the burst rate was $46.0 \pm 19\%$ of pretreatment, whereas when added after 75 min of activity the rate was $49 \pm 15\%$ of pretreatment ($n = 5$ slices at each time point).

Effect of Nicotinic Antagonists on Soman-Induced Bursting. To test whether the epileptiform activity might also involve nicotinic receptor activation, two selective antagonists, mecamylamine and methyllycaconitine ($\alpha 7$ -selective), were tested. Neither 30 μ M mecamylamine ($n = 4$) nor 300 nM methyllycaconitine ($n = 4$) had any significant effect compared with control ($P > 0.05$; unpaired, two-tailed t test): burst rates 30 to 40 min after addition of antagonist were $180 \pm 24\%$ (mecamylamine), $111 \pm 13\%$ (methyllycaconitine) versus $124 \pm 11\%$ in vehicle-treated slices (Fig. 5).

Effect of Benzodiazepines on Soman-Induced Bursting. One of the most commonly used anticonvulsants in the

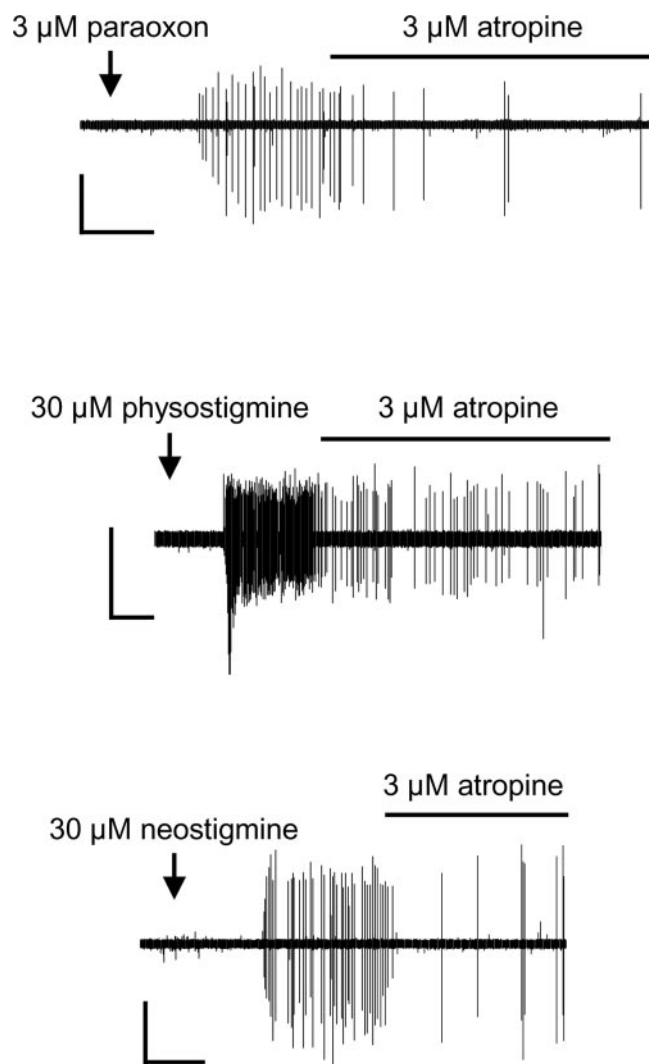


Fig. 3. Inhibition of acetylcholinesterase induces epileptiform activity (horizontal scale bar, 10 min; vertical scale bar, 1 mV). The top trace shows an example of the epileptiform activity induced by the organophosphate paraoxon and the middle and bottom traces by the carbamates physostigmine and neostigmine, respectively. In each case, epileptiform activity was sensitive to atropine.

treatment of OP poisoning is diazepam, which has previously been shown to terminate soman-induced epileptiform activity *in vivo*. Therefore, the effects of diazepam and another benzodiazepine anticonvulsant, midazolam, were investigated. Both anticonvulsants inhibited soman-induced bursting in a concentration-dependent manner (Fig. 6), with a significant reduction being seen at concentrations ≥ 10 μ M for both benzodiazepines ($P < 0.05$).

Effect of Atropine on Nonanticholinesterase-Induced Epileptiform Activity. To investigate whether inhibition of bursting by atropine was restricted to anticholinesterase-induced epileptiform activity, the effect of atropine on epileptiform activity induced by other means was studied. Application of 30 μ M 4-AP (a blocker of K^+ channels), 30 nM DPCPX (an adenosine A_1 antagonist), or perfusion with low Mg^{2+} ACSF all induced epileptiform activity. Table 1 summarizes the characteristics of the epileptiform activity induced by the different treatments with an example of each shown in Fig. 7.

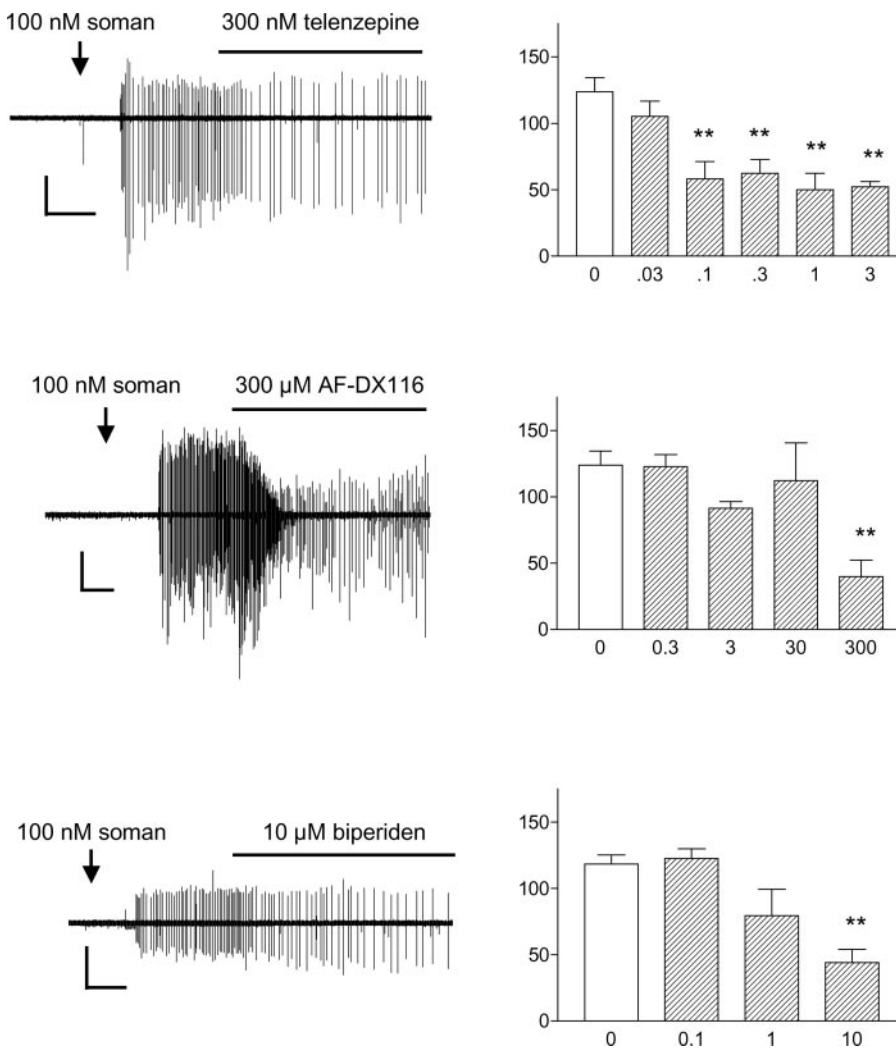


Fig. 4. Effect of the muscarinic antagonists telenzepine, AF-DX 116, and biperiden on soman-induced bursting. The traces (left) show individual experiments (horizontal scale bar, 10 min; vertical scale bar, 1 mV). Effects of the antagonists at 30 to 40 min on all slices tested are shown on the right (abscissa, concentration in micromolar; ordinate, burst rate as a percentage of pretreatment). Each bar represents the mean \pm S.E. of four to five experiments. *, $P < 0.05$; **, $P < 0.01$.

The burst rate (as a percentage of pretreatment) after 10 μ M atropine for 4-AP-induced, DPCPX, and low Mg^{2+} ACSF treatment was $112 \pm 8\%$ ($n = 5$), $131 \pm 13\%$ ($n = 5$), and $202 \pm 69\%$ ($n = 6$), respectively. In contrast, the burst rate after 10 μ M atropine for soman-induced bursting was $23 \pm 11\%$.

Discussion

The present study, which confirms and extends previous work from this laboratory (Wood and Tattersall, 2001), demonstrates that the irreversible anticholinesterase, soman, induces epileptiform activity in the guinea pig hippocampus *in vitro*. This action was mimicked by the OP anticholinesterase paraoxon, by the carbamate anticholinesterases physostigmine and neostigmine, and was inhibited by muscarinic but not nicotinic antagonists. These findings provide evidence that epileptiform activity induced by anticholinesterases in the guinea pig hippocampal slice is mediated by muscarinic receptor stimulation contingent upon inhibition of ACh hydrolysis and subsequent elevation of ACh concentration.

Although the site of initiation of anticholinesterase-induced epileptiform activity was not explored, work by others suggests that the CA1 region in isolation is capable of generating OP-induced epileptiform activity. Endres et al. (1989), using guinea pig hippocampal slices in which the

CA2/CA3 region had been removed, found that paraoxon elicited muscarinic receptor-mediated bursting in the CA1 region in $\approx 70\%$ of slices. The decision to leave the CA2/CA3 region intact in the slices used here was predicated on the fact that this region would contribute *in vivo* to any anticholinesterase response.

The proportion of OP-responsive slices in this study ($\approx 75\%$) is similar to that reported by Endres et al. (1989). Why some slices did not respond to OP application is unclear, but it is conceivable that the orientation of the hippocampus during preparation and the precise locale of the slice within the hippocampus (septal versus temporal) may determine the extent to which cholinergic afferents are preserved and consequently the inherent excitability of individual slices (Lewis et al., 1967; Lee et al., 1990).

The ability of anticholinesterases to induce epileptiform activity or increase excitability has also been reported in rat hippocampal slices. Lebeda and Rutecki (1985) reported that the OP anticholinesterases DFP and soman induced atropine-sensitive epileptiform discharges in the CA3 region of rat hippocampus *in vitro*. Although Williamson and Sarvey (1985) failed to detect epileptiform activity in CA1 after application of DFP or neostigmine, they did find that anticholinesterases induced a secondary population spike.

In common with atropine, other muscarinic receptor antago-

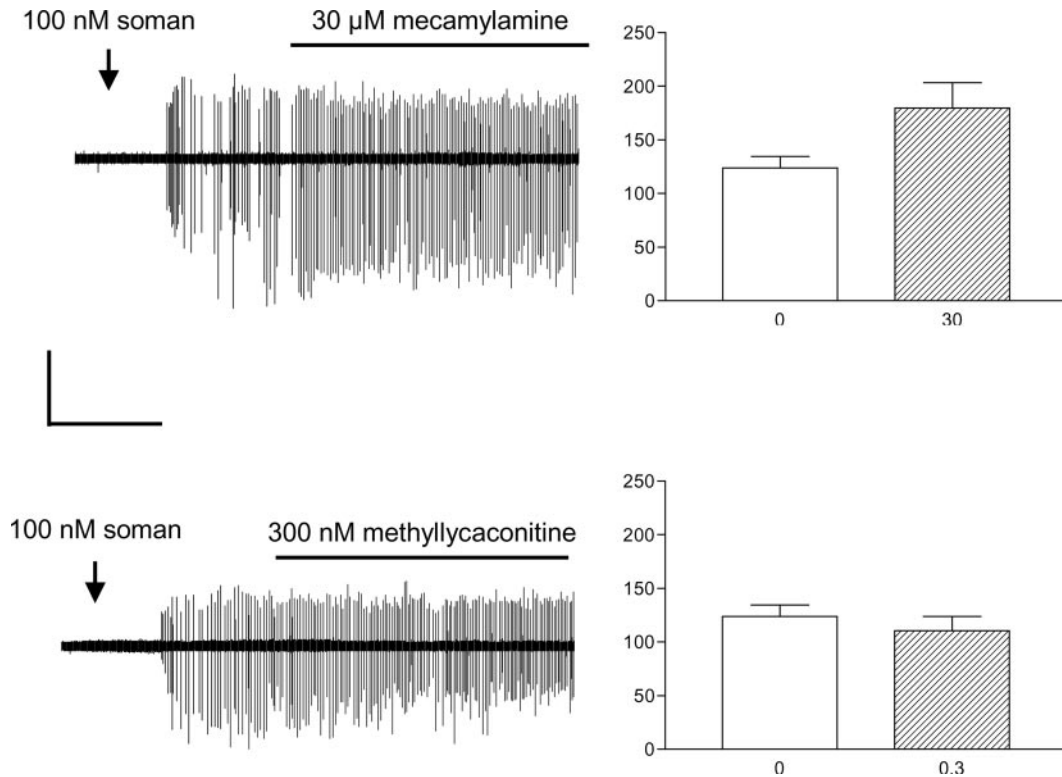


Fig. 5. Effect of nicotinic antagonists on soman-induced epileptiform activity. Effect of mecamylamine on soman-induced bursting is shown above, and the effect of methyllycaconitine shown bottom (horizontal scale bar, 15 min; vertical scale bar, 1 mV). Summary of the effects of the antagonists after 30- to 40-min exposure is shown on the right (abscissa, concentration in micromolar; ordinate, burst rate as a percentage of pretreatment). Each bar represents the mean \pm S.E. of four experiments.

nists reduced the frequency of soman-induced epileptiform bursting. The rank order of potency of these antagonists (telenzepine > biperiden \gg AF-DX 116) tentatively suggests that the effects of soman may be mediated by the action of endogenous ACh on M_1 muscarinic receptors. Multiple muscarinic subtypes

are present within the hippocampus, with M_1/M_3 subtypes thought to be located predominantly postsynaptically and M_2/M_4 subtypes modulating transmitter release presynaptically (Boddeke, 1991; Levey et al., 1991; McKinney et al., 1993). ACh exerts muscarinic receptor-mediated excitatory actions

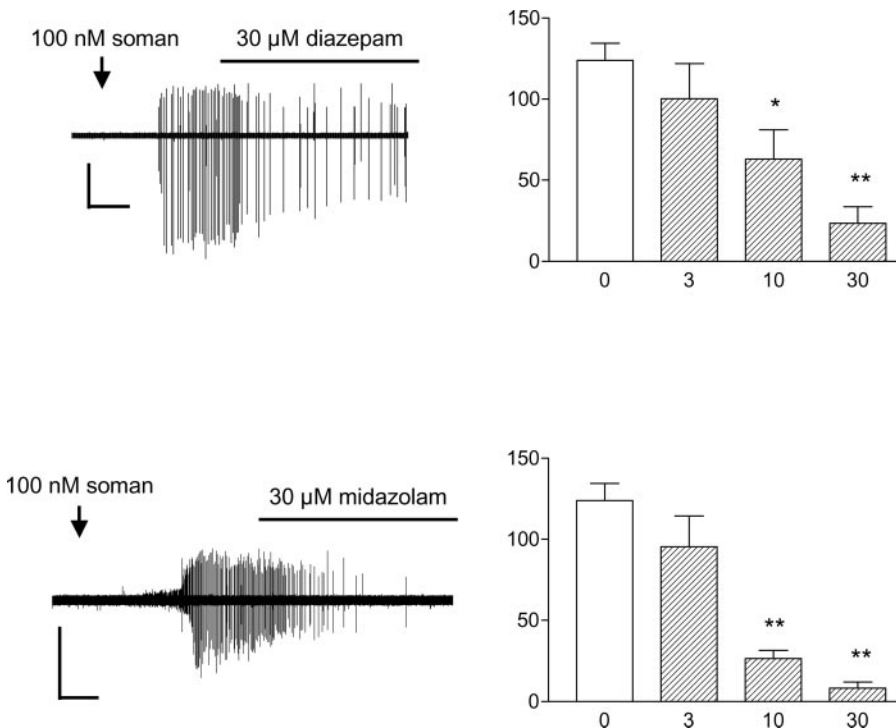


Fig. 6. Effect of the benzodiazepines diazepam and midazolam on soman-induced bursting. The traces (left) show individual experiments with diazepam and midazolam (horizontal scale bar, 10 min; vertical scale bar, 1 mV). The graphs (right) summarize the effects after 30- to 40-min exposure to the benzodiazepines (abscissa, concentration in micromolar; ordinate, burst rate as a percentage of pretreatment). Each bar represents the mean \pm S.E. of five to six individual experiments for diazepam or four experiments for midazolam. *, $P < 0.05$; **, $P < 0.01$.

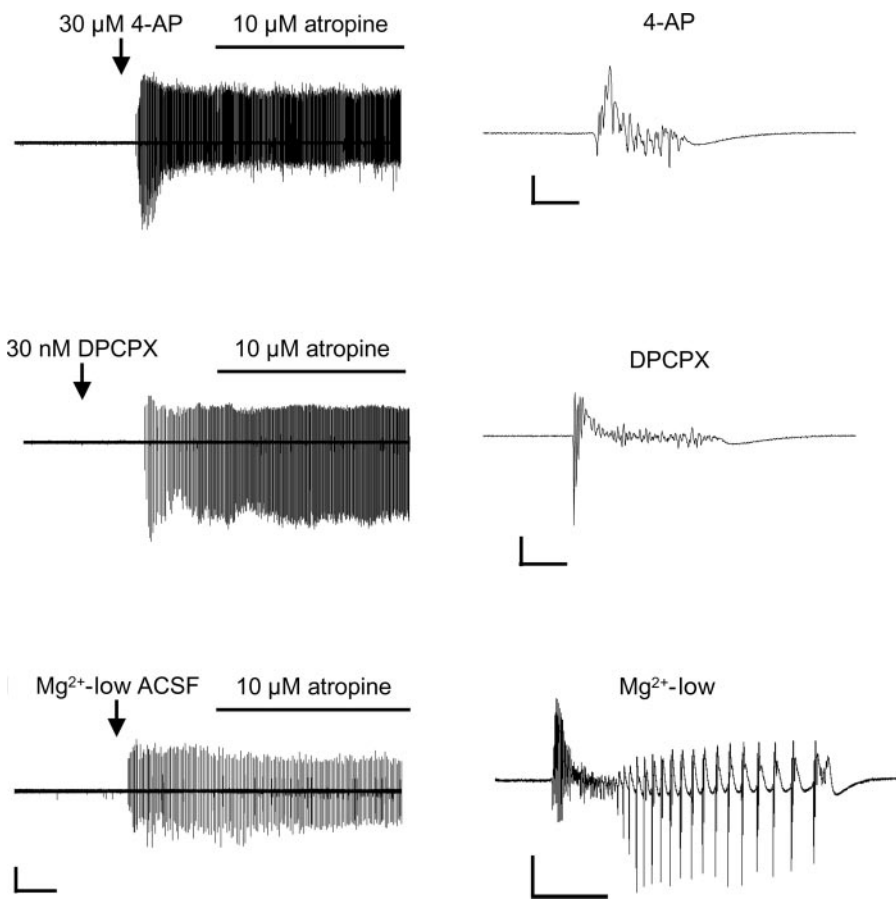


Fig. 7. Induction of epileptiform activity in the guinea pig hippocampal slice by 4-AP, DPCPX, and low Mg^{2+} ACSF and the lack of effect of atropine. Epileptiform activity can be induced by a variety of treatments (horizontal scale bar, 10 min; vertical scale bar, 1 mV). The top trace shows an example of the epileptiform activity induced by 4-AP, the middle trace DPCPX, and the bottom trace low Mg^{2+} ACSF. Examples of individual bursts are shown on the right. Vertical scale bar, 1 mV; horizontal scale bar, 100 ms for 4-AP and DPCPX and 400 ms for low Mg^{2+} .

within the hippocampus by various mechanisms: block of a Ca^{2+} -dependent K^+ current, block of the voltage-dependent M-current, and block of a nonvoltage-dependent resting K^+ current (Cole and Nicoll, 1984; Madison et al., 1987). Previous reports support the idea that antagonists at the M_1 receptor might be more efficacious in the treatment of OP poisoning in vivo. Thus, pretreatment with the M_1 -selective antagonist pirenzepine prevented the initiation of seizures induced by carbachol in 91% of rats compared with only 9% for the M_2 -selective antagonist methoctramine (Cruickshank et al., 1994).

In addition to a postsynaptic excitatory action via muscarinic receptors, soman-induced epileptiform bursting could also be mediated by suppression of GABAergic inhibition. Two opposing effects of cholinergic stimulation on $GABA_A$ receptor-mediated inhibition have been reported in the guinea pig hippocampus (Behrends and ten Bruggencate, 1993): 1) a decrease in the frequency of miniature IPSCs, and 2) a potentiation of spontaneous IPSCs. Santos et al. (2003), recording from rat CA1 neurones, obtained direct evidence for a muscarinic receptor-mediated effect of soman on inhibitory responses subserved by $GABA_A$ receptors: soman decreased the amplitude and frequency of spontaneous IPSCs and reduced the amplitude of evoked IPSCs. However, no effect on miniature IPSCs was observed (Santos et al., 2003).

Of note in the present study was the failure to obtain a complete inhibition of soman-induced epileptiform discharges with muscarinic receptor antagonists, suggesting that a component of the epileptiform activity is mediated by a nonmuscarinic mechanism. One potential candidate mechanism is nicotinic receptor stimulation. Although there are

no reports in guinea pig, it is well established that nicotine can induce seizures in mice (Damaj et al., 1999) and rats (Newman et al., 2001). Nicotinic receptor agonists have also been reported to enhance ongoing epileptiform activity induced by 4-aminopyridine, bicuculline, and low Mg^{2+} perfusion in rat hippocampal slices (Roshan-Milani et al., 2003). However, the failure of mecamylamine and methyllycaconitine to inhibit bursting in our study argues against the involvement of nicotinic receptors in sustaining soman-induced activity.

One hypothesis for the failure to completely inhibit soman-induced bursting with muscarinic antagonists is that epileptiform activity, once initiated by overstimulation of muscarinic receptors, is maintained after recruitment of noncholinergic pathways. Evidence for the secondary involvement of glutamatergic mechanisms in primates has been presented by Lallemand et al. (1999), who reported that treatment with atropine, oxime, and diazepam after soman-intoxication failed to control seizure activity, but if gacyclidine (a noncompetitive NMDA antagonist) was also included, normal EEG activity was restored. McDonough et al. (2000), comparing the effects of a series of antimuscarinic drugs on soman-induced seizure activity in guinea pigs, reported that the antiseizure potency of the antagonists decreased by ≈ 10 -fold when treatment was delayed from 5 to 40 min. In an attempt to determine whether our slices showed a time-dependent change in sensitivity to atropine, a series of experiments were undertaken to compare the effect of atropine after 15 or 75 min of soman-induced epileptiform activity. However, we found no significant difference at these two time points. In this regard, then, our *in vitro* model does not

mimic the pharmacology of soman in vivo. However, a confounding feature of the present slice model is the requirement to wait for the induction of a moderately stable baseline bursting rate upon which the effects of any intervention may be quantified. It is therefore conceivable that any adaptive change in the sensitivity of the bursting to atropine may have already occurred.

Two clinically used benzodiazepine anticonvulsants, diazepam and midazolam, were examined for their effect on soman-induced epileptiform activity. These drugs can terminate soman-induced seizures in vivo (Hayward et al., 1990; McDonough et al., 2000). Both diazepam and midazolam inhibited soman-induced epileptiform activity in the slice at concentrations $\geq 10 \mu\text{M}$. These concentrations are consistent with plasma concentrations reported for diazepam to terminate soman-induced seizures in guinea pigs (approximately 3–4 μM ; Capacio et al., 2001). However, comparisons between our in vitro data and in vivo studies of soman-induced seizures are complicated by the need in vivo to administer adjunctive therapy to keep the animal alive; this therapy, in itself, may have anticonvulsant actions. The concentrations of diazepam and midazolam used in our experiments are also comparable with those in other in vitro slice models of epileptiform activity. When epileptiform activity was induced by penicillin in guinea pig hippocampal slices, diazepam ($\approx 10 \mu\text{M}$) was required to consistently block bursting (Schneiderman and Evans, 1986), whereas an IC_{50} of $\approx 12 \mu\text{M}$ was determined for midazolam to inhibit low Ca^{2+} -induced bursting in the guinea pig hippocampal slice (Ashton et al., 1988). Overall, the data obtained with the benzodiazepines are in accord with the known in vivo pharmacology of OP-induced seizures and are comparable with other in vitro models of epileptiform activity.

The pharmacology of the epileptiform activity induced by soman and other anticholinesterases in the present study was clearly distinct from other forms. This difference is clearly demonstrated by the fact that atropine reduced bursting only in anticholinesterase-treated slices. This finding is perhaps not surprising given the varied mechanisms by which these epileptogenic agents act (4-AP blocks K^+ channels, DPCPX prevents endogenous activation of inhibitory adenosine A_1 receptors, and low Mg^{2+} enhances NMDA receptor/ion channel function and increases the probability of transmitter release).

To be considered as a useful model in which to evaluate the ability of anticonvulsants to switch off OP-induced epileptiform activity, the in vitro hippocampal slice preparation must relate to the in vivo situation. One characteristic of OP poisoning is the development of seizures (Ohbu et al., 1997; Shih and McDonough, 1999). Here, we have shown that application of the OP anticholinesterase soman, as well as other structurally diverse anticholinesterases, can induce epileptiform activity in the guinea pig hippocampal slice. The seizures induced by OPs in vivo can be treated with antimuscarinics. Here, we have shown that application of antimuscarinic compounds inhibit soman-induced epileptiform activity. Clinically, seizures associated with OP poisoning are sensitive to treatment with benzodiazepine anticonvulsants (Ohbu et al., 1997). Again, the epileptiform activity induced here was inhibited by both diazepam and midazolam. Consequently, the guinea pig hippocampal slice may well prove a useful tool for the study of OP-induced seizures.

The next stage in the validation of the model will be to compare the efficacy of a wider range of anticonvulsants against OP-induced epileptiform activity in guinea pig hippocampus in vitro with efficacy against OP-induced seizures in guinea pig in vivo.

Acknowledgments

We thank Simon Turner for aid in the preparation of this manuscript. © British crown copyright 2004/DSTL—published with the permission of the Controller of Her Majesty's Stationery Office.

References

- Alzheimer C, Sutor B, and ten Bruggencate G (1989) Transient and selective blockade of adenosine A_1 receptors by 8-cyclopentyl-1,3-dipropylxanthine (DPCPX) causes sustained epileptiform activity in hippocampal CA3 neurons of guinea pigs. *Neurosci Lett* **99**:107–112.
- Ashton D, Willems R, de Prins E, and Wauquier A (1988) Field-potential assay of antiepileptic drugs in the hippocampal slice. *Epilepsia* **29**:321–329.
- Baze WB (1993) Soman-induced morphological changes: an overview in the non-human primate. *J Appl Toxicol* **13**:173–177.
- Behrends JC and ten Bruggencate G (1993) Cholinergic modulation of synaptic inhibition in the guinea pig hippocampus in vitro: excitation of GABAergic interneurons and inhibition of GABA-release. *J Neurophysiol* **69**:626–629.
- Boddeke HW (1991) Different effects of muscarinic agonists in rat superior cervical ganglion and hippocampal slices. *Eur J Pharmacol* **201**:191–197.
- Brown MA and Brix KA (1998) Review of health consequences from high-, intermediate- and low-level exposure to organophosphorus nerve agents. *J Appl Toxicol* **18**:393–408.
- Capacio BR, Whalley CE, Byers CE, and McDonough JH (2001) Intramuscular diazepam pharmacokinetics in soman-exposed guinea pigs. *J Appl Toxicol* **21**:S67–S74.
- Cole AE and Nicoll RA (1984) Characterization of a slow cholinergic post-synaptic potential recorded in vitro from rat hippocampal pyramidal cells. *J Physiol (Lond)* **352**:173–188.
- Cruikshank JW, Brudzynski SM, and McLachlan RS (1994) Involvement of M1 muscarinic receptors in the initiation of cholinergically induced epileptic seizures in the rat brain. *Brain Res* **643**:125–129.
- Damaj MI, Glassco W, Dukat M, and Martin BR (1999) Pharmacological characterization of nicotine-induced seizures in mice. *J Pharmacol Exp Ther* **291**:1284–1291.
- Endres W, Spuler A, and ten Bruggencate G (1989) Acetylcholinesterase reactivators antagonize epileptiform bursting induced by paraoxon in guinea pig hippocampal slices. *J Pharmacol Exp Ther* **251**:1181–1186.
- Harrison PK, Sheridan RD, Green AC, Scott IR, and Tattersall JE (2000) Development of a guinea-pig hippocampal slice model of soman-induced seizure activity. *Eur J Neurosci Suppl* **12**:209.
- Hayward LJ, Wall HG, Jaax NK, Wade JV, Marlow DD, and Nold JB (1990) Decreased brain pathology in organophosphate-exposed rhesus monkeys following benzodiazepine therapy. *J Neurolog Sci* **98**:99–106.
- Lallement G, Baubichon D, Clarencon D, Galonnier M, Peoc'h M, and Carpentier P (1999) Review of the value of gacyclidine (GK-11) as adjuvant medication to conventional treatments of organophosphate poisoning: primate experiments mimicking various scenarios of military or terrorist attack by soman. *Neurotoxicology* **20**:675–684.
- Lallement G, Dorandeu F, Filliat P, Carpentier P, Baille V, and Blanchet G (1998) Medical management of organophosphate seizures. *J Physiol (Paris)* **92**:369–373.
- Lebeda FJ and Rutecki PA (1985) Characterization of spontaneous epileptiform discharges induced by organophosphorus anticholinesterases in the in vitro rat hippocampus. *Proc West Pharmacol Soc* **28**:187–190.
- Lee PH, Xie CW, Lewis DV, Wilson WA, Mitchell CL, and Hong JS (1990) Opioid-induced epileptiform bursting in hippocampal slices: higher susceptibility in ventral than dorsal hippocampus. *J Pharmacol Exp Ther* **253**:545–551.
- Levey AI, Kitt CA, Simonds WF, Price DL, and Brann MR (1991) Identification and localization of muscarinic acetylcholine receptor proteins in brain with subtype-specific antibodies. *J Neurosci* **11**:3218–3226.
- Lewis PR, Shute CCD, and Silver A (1967) Confirmation from choline acetylase analyses of a massive cholinergic innervation to the rat hippocampus. *J Physiol (Lond)* **191**:215–224.
- Madison DV, Lancaster B, and Nicoll RA (1987) Voltage clamp analysis of cholinergic action in the hippocampus. *J Neurosci* **7**:733–741.
- McDonough JH and Shih TM (1997) Neuropharmacological mechanisms of nerve agent-induced seizure and neuropathology. *Neurosci Biobehav Rev* **21**:559–579.
- McDonough JH, Zoeffel LD, McMonagle J, Copeland TL, Smith CD, and Shih TM (2000) Anticonvulsant treatment of nerve agent seizures: anticholinergics versus diazepam in soman-intoxicated guinea pigs. *Epilepsy Res* **38**:1–14.
- McKinney M, Miller KH, and Aagaard PJ (1993) Pharmacological characterization of the rat hippocampal muscarinic autoreceptor. *J Pharmacol Exp Ther* **264**:74–78.
- Newman MB, Manresa JJ, Sanberg PR, and Shytle RD (2001) Nicotine induced seizures blocked by mecamylamine and its stereoisomers. *Life Sci* **69**:2583–2591.
- Ohbu S, Yamashina A, Takasu N, Yamaguchi T, Murai T, Nakano K, Matsui Y, Mikami R, Sakurai K, and Hinohara S (1997) Sarin poisoning on Tokyo subway. *South Med J* **90**:587–593.
- Oliver AP, Hoffer BJ, and Wyatt RJ (1977) The hippocampal slice: a system for studying the pharmacology of seizures and for screening anticonvulsant drugs. *Epilepsia* **18**:543–548.

- Perreault P and Avoli M (1991) Physiology and pharmacology of epileptiform activity induced by 4-aminopyridine in rat hippocampal slices. *J Neurophysiol* **65**:771–785.
- Psarropoulou C and Haas HL (1989) Action of anticonvulsants on hippocampal slices in Mg-free medium. *Naunyn-Schmiedeberg's Arch Pharmacol* **339**:613–616.
- Raveh L, Chapman S, Cohen G, Alkalay D, Gilat E, Rabinovitz I, and Weissman BA (1999) The involvement of the NMDA receptor complex in the protective effect of anticholinergic drugs against soman poisoning. *Neurotoxicology* **20**:551–560.
- Rice AC and DeLorenzo RJ (1999) N-Methyl-D-aspartate receptor activation regulates refractoriness of status epilepticus to diazepam. *Neuroscience* **93**:117–123.
- Roshan-Milani S, Ferrigan L, Khoshnood MJ, Davies CH, and Cobb SR (2003) Regulation of epileptiform activity in hippocampus by nicotinic acetylcholine receptor activation. *Epilepsy Res* **56**:51–65.
- Santos MD, Pereira EFR, Aracava Y, Castro NG, Fawcett WP, Randall WR, and Albuquerque (2003) Low concentrations of pyridostigmine prevent soman-induced inhibition of GABAergic transmission in the central nervous system: involvement of muscarinic receptors. *J Pharmacol Exp Ther* **304**:254–265.
- Schneiderman JH and Evans JC (1986) Effects of anticonvulsants on penicillin-induced bursting in guinea pig hippocampal slices. *Epilepsia* **27**:347–353.
- Shih TM and McDonough JH (1999) Organophosphorus nerve agents-induced seizures and efficacy of atropine sulfate as anticonvulsant treatment. *Pharm Biochem Behav* **64**:147–153.
- Shih TM, McDonough JH, and Koplovitz I (1999) Anticonvulsants for soman-induced seizure activity. *J Biomed Sci* **6**:86–96.
- Taylor P (1996) Anticholinesterase agents, in *Goodman & Gilman's: Pharmacological Basis of Therapeutics*, 9th ed. (Hardman JG and Limbird LE eds) pp 161–176, McGraw-Hill Book Company, New York.
- Turski L, Ikonomidou C, Turski WA, Bortolotto ZA, and Cavalheiro EA (1989) Review: cholinergic mechanisms and epileptogenesis. The seizures induced by pilocarpine: a novel experimental model of intractable epilepsy. *Synapse* **3**:154–171.
- Williamson AM and Sarvey JM (1985) Effects of cholinesterase inhibitors on evoked responses in field CA1 of the rat hippocampus. *J Pharmacol Exp Ther* **235**:448–455.
- Wood SJ and Tattersall JE (2001) An improved brain slice model of nerve agent-induced seizure activity. *J Appl Toxicol* **21**:S83–S86.

Address correspondence to: Dr. P. K. Harrison, Biomedical Sciences, Dstl, Bldg. 04, Porton Down, Salisbury, Wiltshire SP4 0JQ, UK. E-mail: pkharrison@dstl.gov.uk
